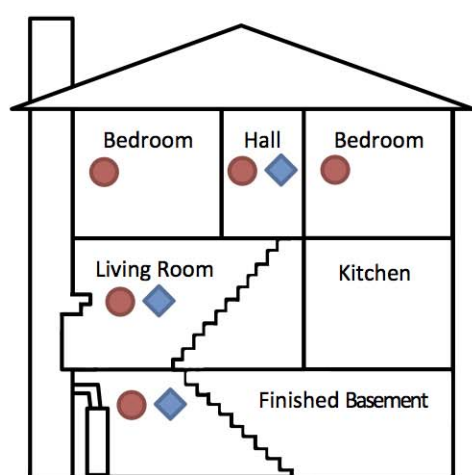





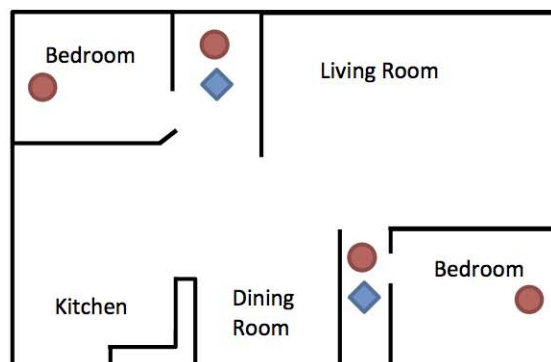
GENERAL GUIDELINES FOR SMOKE AND CARBON MONOXIDE DETECTOR LOCATIONS.

****LOCATIONS MAY VARY BASED ON FLOOR PLANS. CONSULT THE BUILDING DEPARTMENT FOR FURTHER QUESTIONS. (203) 563-0177**



Multi Story Residence

KEY		Smoke Alarms
		CO Alarms
		Both or Combination



Single Story Residence