

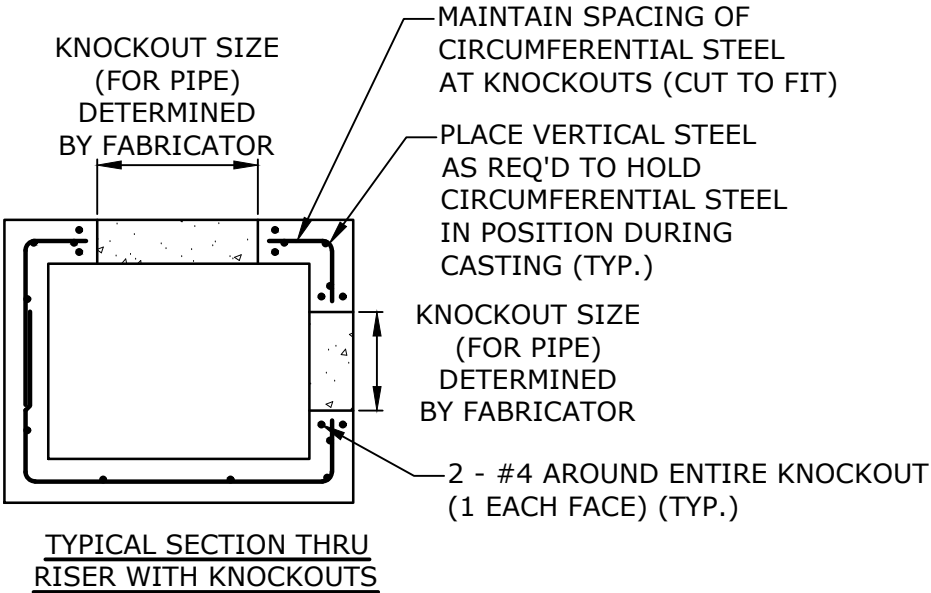
- NOTE:
- 1. ASPHALT THICKNESS AS PART OF FINAL RESTORATION SHALL MATCH THE THICKNESS OF THE EXISTING ROAD OR THE MINIMUM OF 4", WHICHEVER IS GREATER.
 - 2. FINAL PAVEMENT LIMITS SHALL BE AS APPROVED BY TOWN ENGINEER.
 - 3. ALL EXCAVATION SHALL BE PATCHED WITH TEMPORARY BITUMINOUS CONCRETE DAILY.
 - 4. TEMPORARY ASPHALT SHALL BE 4" INCHES THICK, INSTALLED IN 2 LIFTS.

PERMANENT PAVEMENT REPAIR
NO SCALE

DEPARTMENT OF PUBLIC WORKS TOWN ENGINEER, TOWN OF WILTON 238 Danbury Road (203) 563-0152	
PERMANENT PAVEMENT REPAIR DETAIL WILTON, CONNECTICUT	
Scale: NTS	Date: 02/21/2019
Drawn by:	Grid:
Approved by: F. Smeriglio, PE	Sheet: PM-01

NOTES:

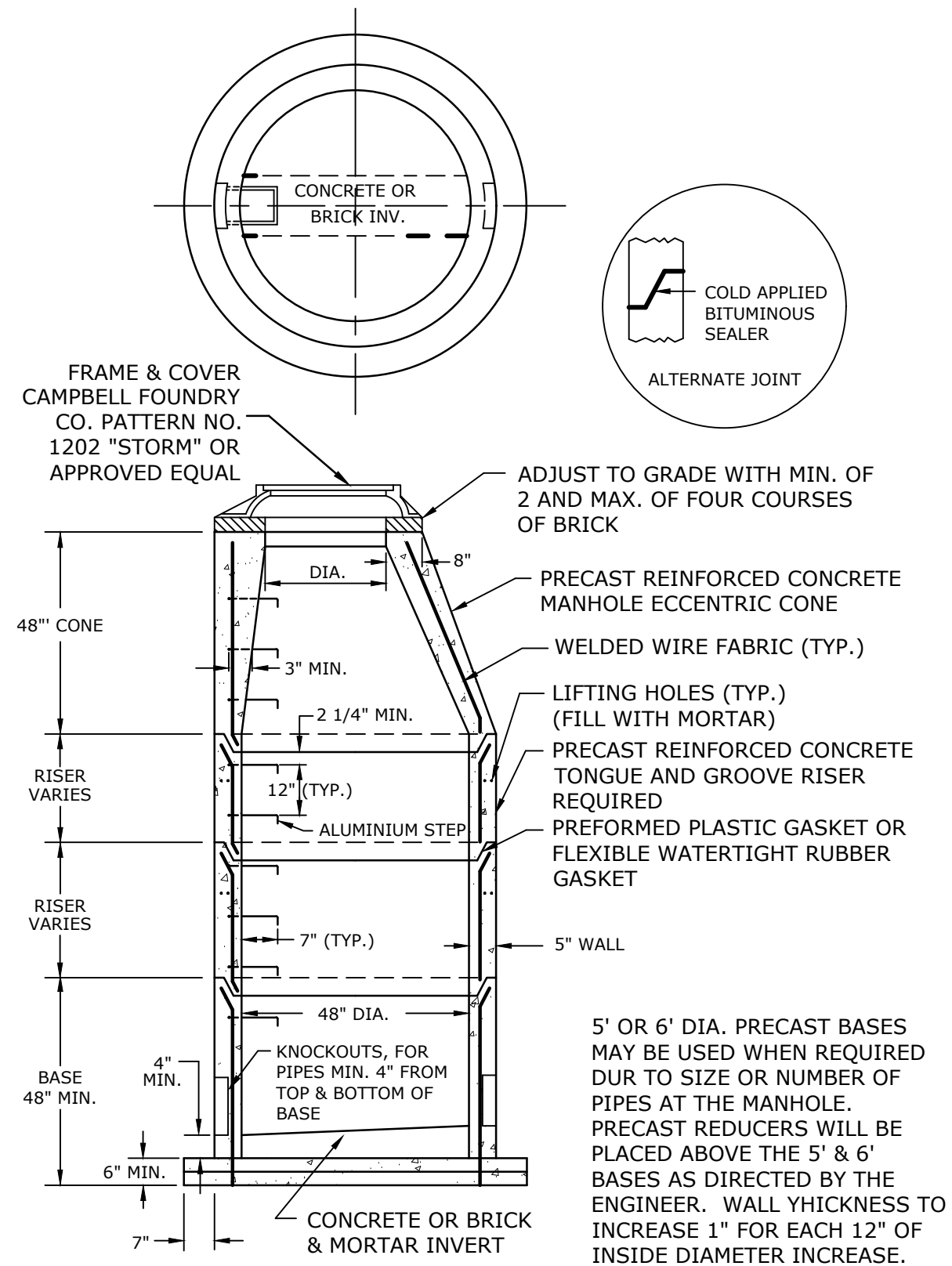
1. REINFORCEMENT SHALL CONFORM TO ASTM A615, GRADE 60.
2. DETAILS ON THIS SHEET SHOW STANDARD REINFORCEMENT. WELDED WIRE FABRIC WITH AN AREA EQUAL TO OR GREATER THAN THE REINFORCING SHOWN MAY BE SUBSTITUTED.
3. ALL LAP SPLICES, DEVELOPMENT LENGTHS, BENDS FOR REINFORCEMENT, AND WELDED WIRE FABRIC SHALL CONFORM TO AASHTO STANDARD SPECIFICATIONS FOR HIGHWAY BRIDGES.
4. ALL REINFORCEMENT SHALL HAVE A MINIMUM CLEAR COVER OF 2", EXCEPT FOR BENEATH BOTTOM REINFORCEMENT IN TOP SLABS, WHERE THE MINIMUM MAY BE 1½"
5. MINIMUM CONCRETE COMPRESSIVE STRENGTH FC'=4,000PSI SHALL BE OBTAINED BEFORE SHIPPING.
6. BASES AND RISERS AT A DEPTH OF 20' AND GREATER SHALL BE DESIGNED BY THE CONTRACTOR AND WORKING DRAWINGS SHALL BE SUBMITTED TO THE ENGINEER FOR REVIEW.
7. SEE STANDARD CTDOT DRAWING 507-K FOR CATCH BASIN FRAMES AND GRATES.
8. FOR DOT MAINTENANCE PERSONNEL, RISERS MAY BE PREFABRICATED WITH PIPE OPENINGS IN ALL FOUR WALLS. ADEQUATE REINFORCING AROUND PIPE OPENINGS TO CONFORMING TO THESE PLANS SHALL BE PROVIDED. ANY RISERS USED WHERE A PIPE OPENING IS TO REMAIN IN PLACE MUST BE FORMED UP WITH BRICK AS DIRECTED BY THE ENGINEER.
9. RISERS SHALL NEVER HAVE CORNER PIPE ENTRIES. WHERE THE ALIGNMENT OF THE PIPE WITH RESPECT TO THE CORNER OF THE CATCH BASIN CANNOT BE CHANGED, A ROUND STRUCTURE CONFORMING TO ASTM C478 SHALL BE USED. REINFORCING FOR THE ROUND TOP SLAB WITH A RECTANGULAR OPENING SHALL CONFORM TO DETAILS SHOWN HERE.
10. ALL PIPE OPENINGS SHALL BE CLOSED USING MATERIALS WHICH CONFORM TO STATE OF CONNECTICUT STANDARD SPECIFICATIONS SECTION M.08.02. IF THE ENGINEER DETERMINES THAT THE CLOSURE OF ANY PIPE OPENING IS UNSATISFACTORY, THE CONTRACTOR SHALL RECLOSE SAID OPENING AT NO ADDITIONAL COST TO THE STATE. KNOCKOUTS FOR PIPE OPENINGS SHALL NOT RESULT IN A REDUCED WALL THICKNESS.
11. THE LATEST STATE OF CONNECTICUT STANDARD SPECIFICATIONS AND SUPPLEMENTAL SHALL GOVERN.
12. FOR ADDITIONAL DETAILS, SEE OTHER CATCH BASIN SHEETS.
13. WALL THICKNESS OF ALL CB'S OVER 10' DEEP SHALL BE INCREASED TO 12" THICK. INSIDE DIMENSION SHALL REMAIN THE SAME. (THE 12" THICKNESS SHALL START AFTER THE FIRST 10")
14. BUTYL RUBBER JOINT SEAL SHALL CONFORM TO AASHTO M-198 AND MORTAR SHALL CONFORM TO THE LATEST STATE OF CONNECTICUT STANDARD SPECIFICATIONS MATERIAL SECTION M11.04.
15. SHRINKAGE AND TEMPERATURE REINFORCEMENT SHALL BE PROVIDED IN THE TOPS OF SLABS. THE TOTAL AREA OF REINFORCEMENT PROVIDED SHALL BE AT LEAST 0.125 IN²/FT IN EACH DIRECTION. THE MAXIMUM SPACING OF THIS REINFORCEMENT SHALL NOT EXCEED 18 INCHES.
16. THE DETAILS SHOWN IN THE PLAN VIEW FOR THE PRECAST CONCRETE ROUND STRUCTURES SHALL ALSO BE USED FOR CONVERTING MANHOLES TO CATCH BASINS.
17. SET CATCH BASIN TOPS ON 6" MINIMUM BRICK OR BLOCK LEVELING COURSE.
18. AFFIX PLAQUE TO ALL CATCH BASINS STATING "DUMP NO WASTE - DRAINS TO LONG ISLAND SOUND". COST FOR PLAQUE SHALL BE INCLUDED IN THE CONTRACT UNIT COST FOR CATCH BASINS.



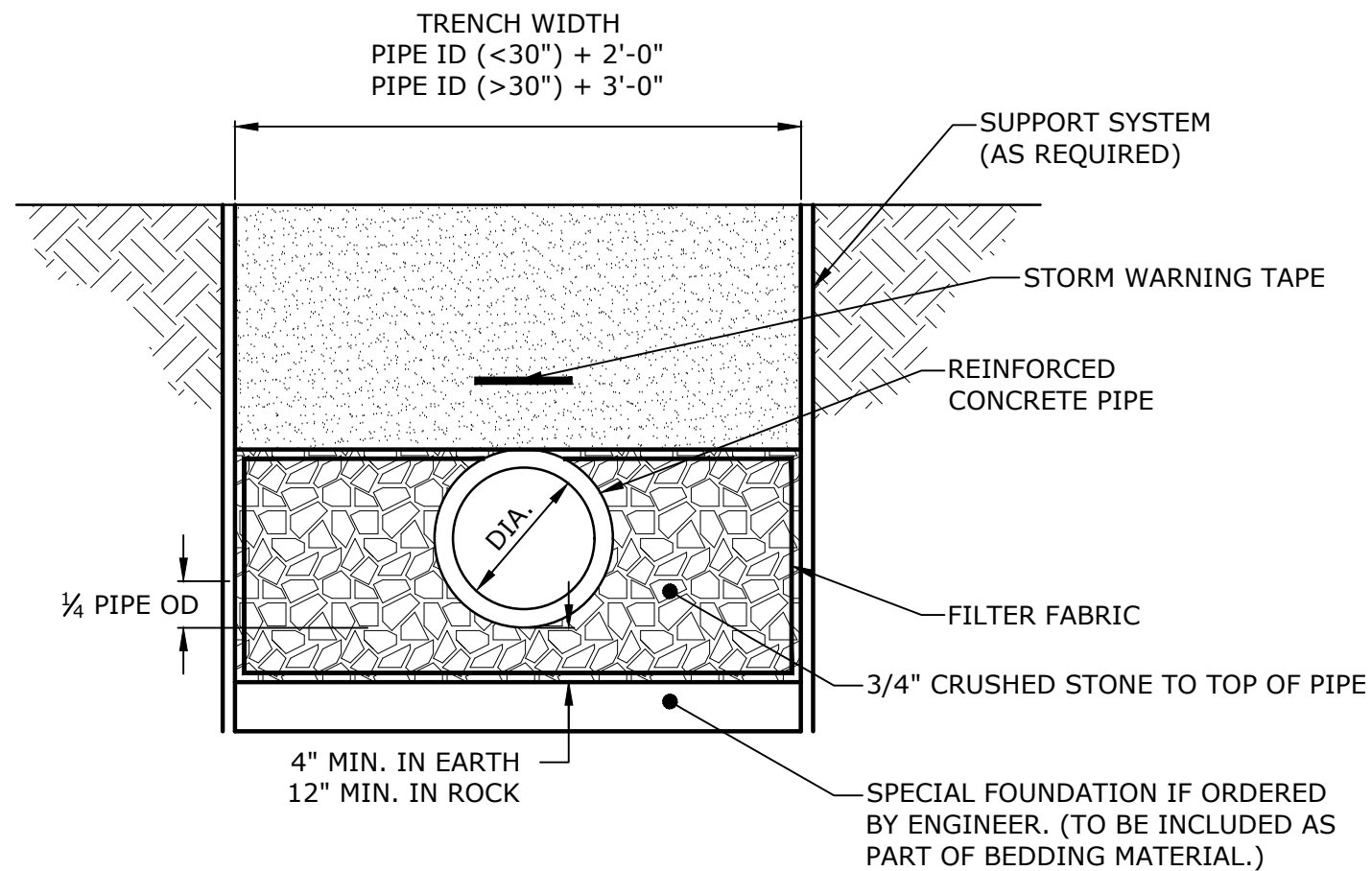
CONNECTICUT DEPARTMENT OF TRANSPORTATION

TYPE "C" CATCH BASIN
NO SCALE

DEPARTMENT OF PUBLIC WORKS TOWN ENGINEER, TOWN OF WILTON 238 Danbury Road (203) 563-0152	
TYPE "C" CATCH BASIN DETAIL WILTON, CONNECTICUT	
Scale: NTS	Date: 02/21/2019
Drawn by:	Grid:
Approved by: F. Smeriglio, PE	Sheet: SW-01B



DEPARTMENT OF PUBLIC WORKS TOWN ENGINEER, TOWN OF WILTON 238 Danbury Road (203) 563-0152	
48" PRECAST MANHOLE WILTON, CONNECTICUT	
Scale: NTS	Date: 02/21/2019
Drawn by:	Grid:
Approved by: F. Smeriglio, PE	Sheet SW-02

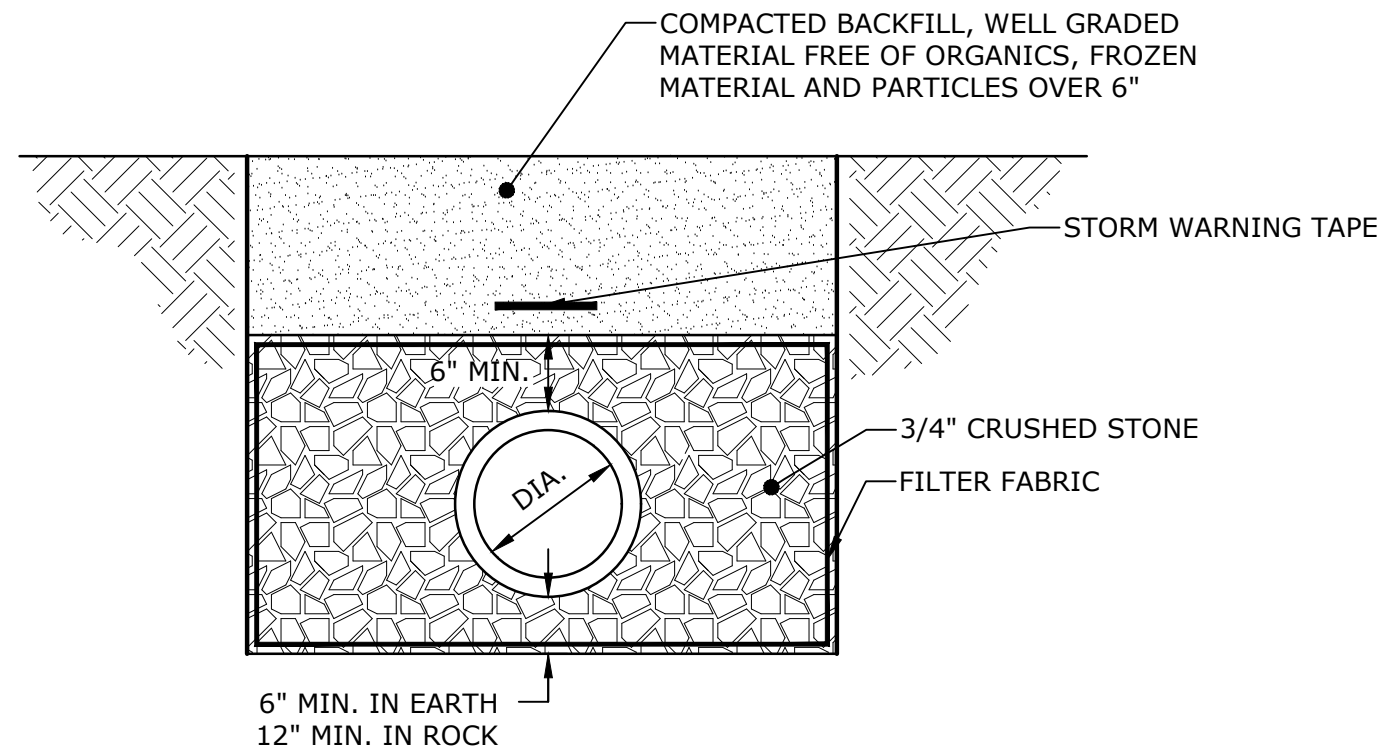


CIRCULAR R.C.P. TRENCH BEDDING
 NO SCALE

DEPARTMENT OF PUBLIC WORKS
 TOWN ENGINEER, TOWN OF WILTON
 238 Danbury Road (203) 563-0152

CIRCULAR R.C.P. TRENCH BEDDING DETAIL
 WILTON, CONNECTICUT

Scale: NTS	Date: 02/21/2019
Drawn by:	Grid:
Approved by: F. Smeriglio, PE	Sheet: SW-03



SDR-35 TRENCH BEDDING DETAIL

NO SCALE

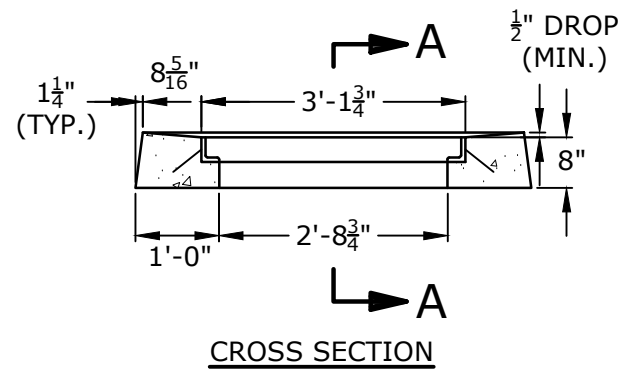
OFFICE OF THE TOWN ENGINEER
TOWN OF TRUMBULL
5866 Main Street (203) 452-5050

TRENCH BEDDING DETAIL
WILTON, CONNECTICUT

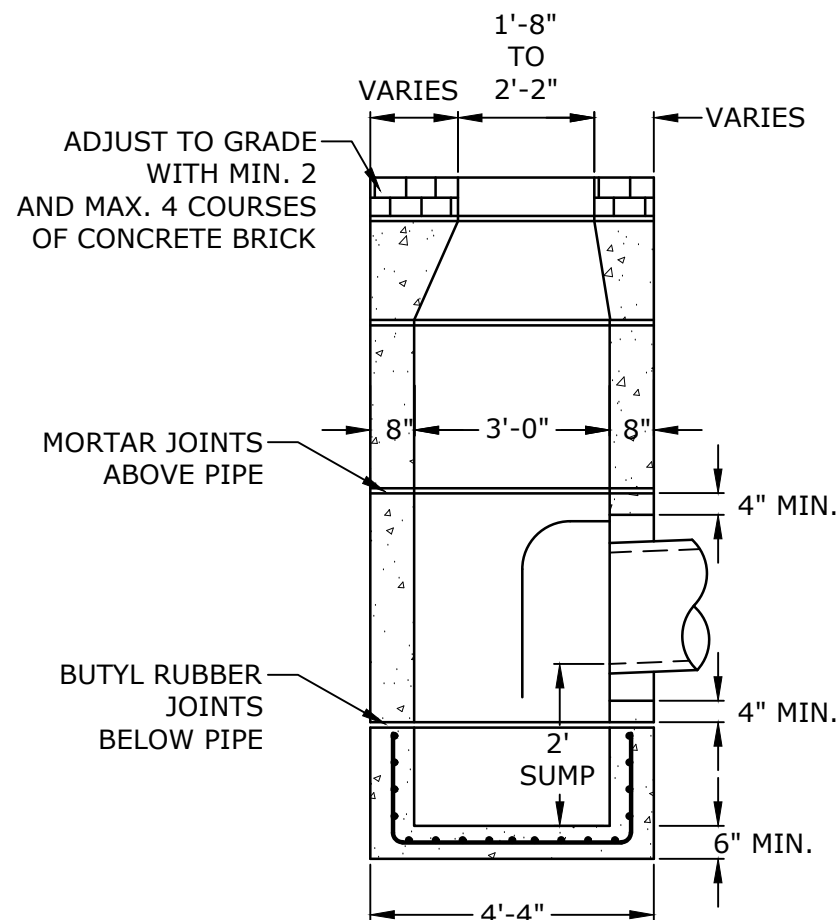
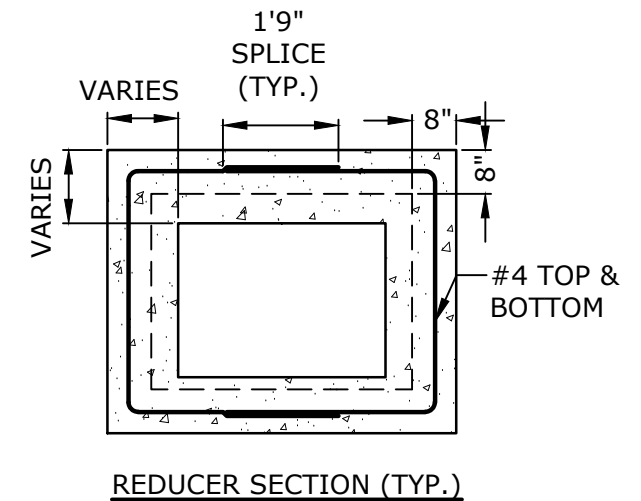
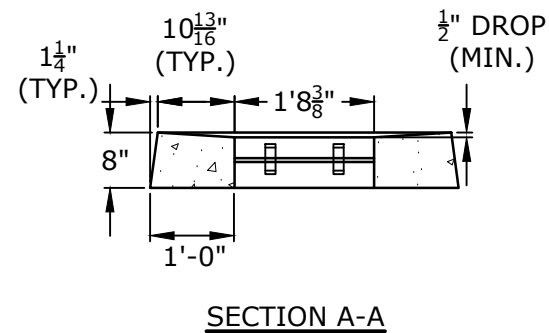
Scale: NTS	Date: 02/21/2019
------------	------------------

Drawn by:	Grid:
-----------	-------

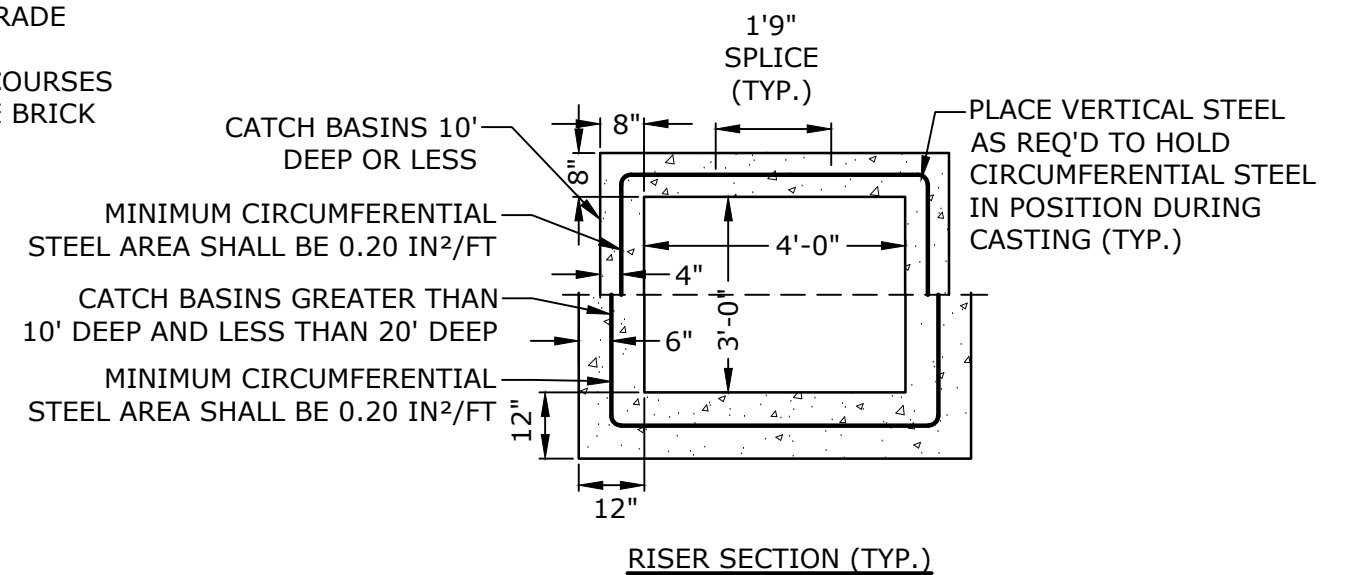
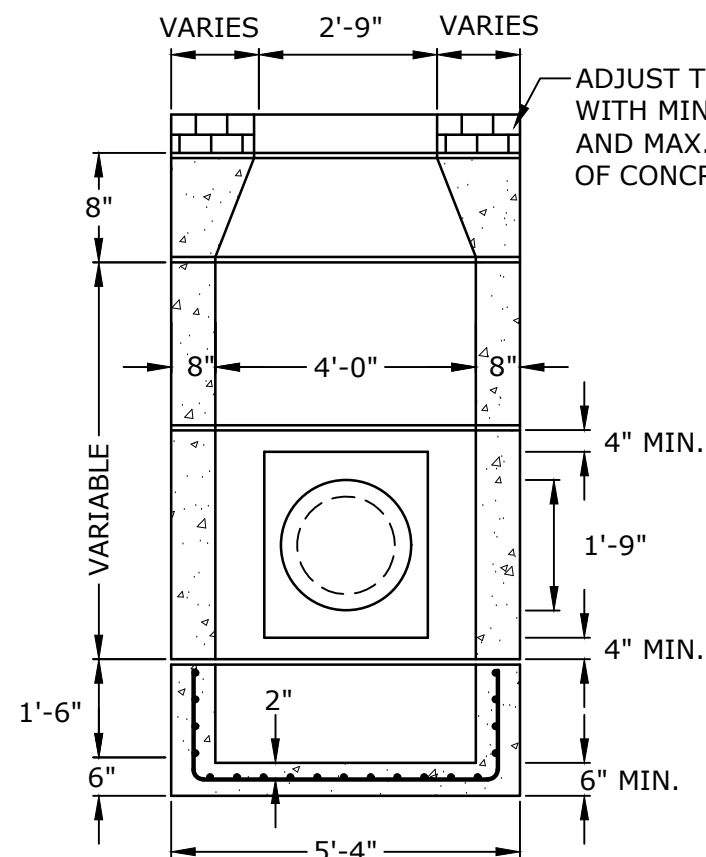
Approved by: F. Smeriglio, PE	Sheet: SW-04
-------------------------------	--------------



USE GALVANIZED GRATE & FRAME



INSTALL BELL TRAP ON PIPE OUTLET



CONNECTICUT DEPARTMENT OF TRANSPORTATION

TYPE "C-L" CATCH BASIN

NO SCALE

DEPARTMENT OF PUBLIC WORKS
TOWN ENGINEER, TOWN OF WILTON
238 Danbury Road (203) 563-0152

TYPE "C-L" CATCH BASIN DETAIL
WILTON, CONNECTICUT

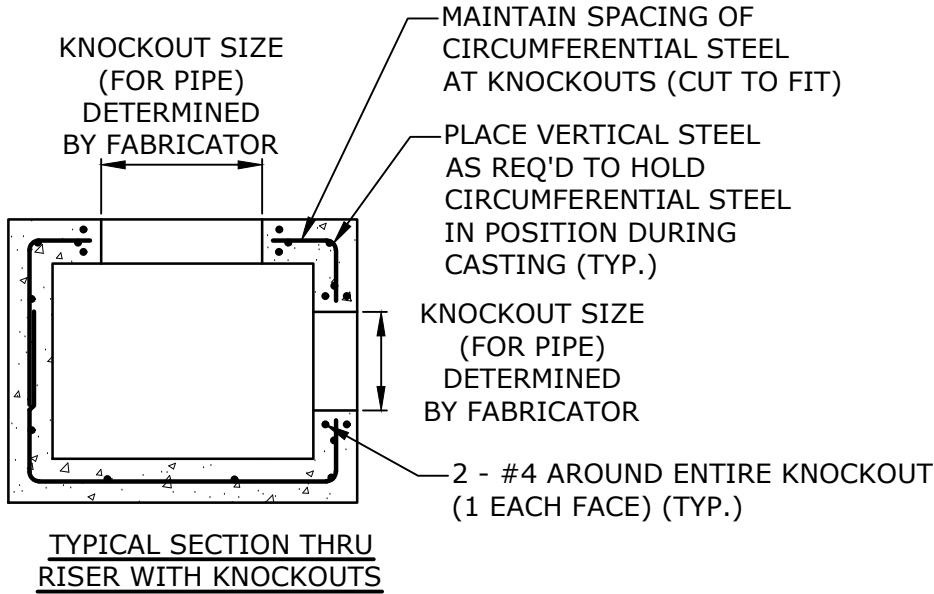
Scale: NTS Date: 02/21/2019

Drawn by: Grid:

Approved by: F. Smeriglio, PE Sheet: SW-05A

NOTES:

1. REINFORCEMENT SHALL CONFORM TO ASTM A615, GRADE 60.
2. DETAILS ON THIS SHEET SHOW STANDARD REINFORCEMENT. WELDED WIRE FABRIC WITH AN AREA EQUAL TO OR GREATER THAN THE REINFORCING SHOWN MAY BE SUBSTITUTED.
3. ALL LAP SPLICES, DEVELOPMENT LENGTHS, BENDS FOR REINFORCEMENT, AND WELDED WIRE FABRIC SHALL CONFORM TO AASHTO STANDARD SPECIFICATIONS FOR HIGHWAY BRIDGES.
4. ALL REINFORCEMENT SHALL HAVE A MINIMUM CLEAR COVER OF 2", EXCEPT FOR BENEATH BOTTOM REINFORCEMENT IN TOP SLABS, WHERE THE MINIMUM MAY BE 1½"
5. MINIMUM CONCRETE COMPRESSIVE STRENGTH FC'=4,000PSI SHALL BE OBTAINED BEFORE SHIPPING.
6. BASES AND RISERS AT A DEPTH OF 20' AND GREATER SHALL BE DESIGNED BY THE CONTRACTOR AND WORKING DRAWINGS SHALL BE SUBMITTED TO THE ENGINEER FOR REVIEW.
7. SEE STANDARD DRAWING 507-K FOR CATCH BASIN FRAMES AND GRATES.
8. FOR DOT MAINTENANCE PERSONNEL, RISERS MAY BE PREFABRICATED WITH PIPE OPENINGS IN ALL FOUR WALLS. ADEQUATE REINFORCING AROUND PIPE OPENINGS TO CONFORMING TO THESE PLANS SHALL BE PROVIDED. ANY RISERS USED WHERE A PIPE OPENING IS TO REMAIN IN PLACE MUST BE FORMED UP WITH BRICK AS DIRECTED BY THE ENGINEER.
9. RISERS SHALL NEVER HAVE CORNER PIPE ENTRIES. WHERE THE ALIGNMENT OF THE PIPE WITH RESPECT TO THE CORNER OF THE CATCH BASIN CANNOT BE CHANGED, A ROUND STRUCTURE CONFORMING TO ASTM C478 SHALL BE USED. REINFORCING FOR THE ROUND TOP SLAB WITH A RECTANGULAR OPENING SHALL CONFORM TO DETAILS SHOWN HERE.
10. ALL PIPE OPENINGS SHALL BE CLOSED USING MATERIALS WHICH CONFORM TO STATE OF CONNECTICUT STANDARD SPECIFICATIONS SECTION M.08.02. IF THE ENGINEER DETERMINES THAT THE CLOSURE OF ANY PIPE OPENING IS UNSATISFACTORY, THE CONTRACTOR SHALL RECLOSE SAID OPENING AT NO ADDITIONAL COST TO THE STATE. KNOCKOUTS FOR PIPE OPENINGS SHALL NOT RESULT IN A REDUCED WALL THICKNESS.
11. THE LATEST STATE OF CONNECTICUT STANDARD SPECIFICATIONS AND SUPPLEMENTALS SHALL GOVERN.
12. FOR ADDITIONAL DETAILS, SEE OTHER CATCH BASIN SHEETS.
13. WALL THICKNESS OF ALL CB'S OVER 10' DEEP SHALL BE INCREASED TO 12" THICK. INSIDE DIMENSION SHALL REMAIN THE SAME. (THE 12" THICKNESS SHALL START AFTER THE FIRST 10")
14. BUTYL RUBBER JOINT SEAL SHALL CONFORM TO AASHTO M-198 AND MORTAR SHALL CONFORM TO THE LATEST STATE OF CONNECTICUT STANDARD SPECIFICATIONS MATERIAL SECTION M11.04.
15. SHRINKAGE AND TEMPERATURE REINFORCEMENT SHALL BE PROVIDED IN THE TOPS OF SLABS. THE TOTAL AREA OF REINFORCEMENT PROVIDED SHALL BE AT LEAST 0.125 IN²/FT IN EACH DIRECTION. THE MAXIMUM SPACING OF THIS REINFORCEMENT SHALL NOT EXCEED 18 INCHES.
16. THE DETAILS SHOWN IN THE PLAN VIEW FOR THE PRECAST CONCRETE ROUND STRUCTURES SHALL ALSO BE USED FOR CONVERTING MANHOLES TO CATCH BASINS.



CONNECTICUT DEPARTMENT OF TRANSPORTATION

TYPE "C-L" CATCH BASIN

NO SCALE

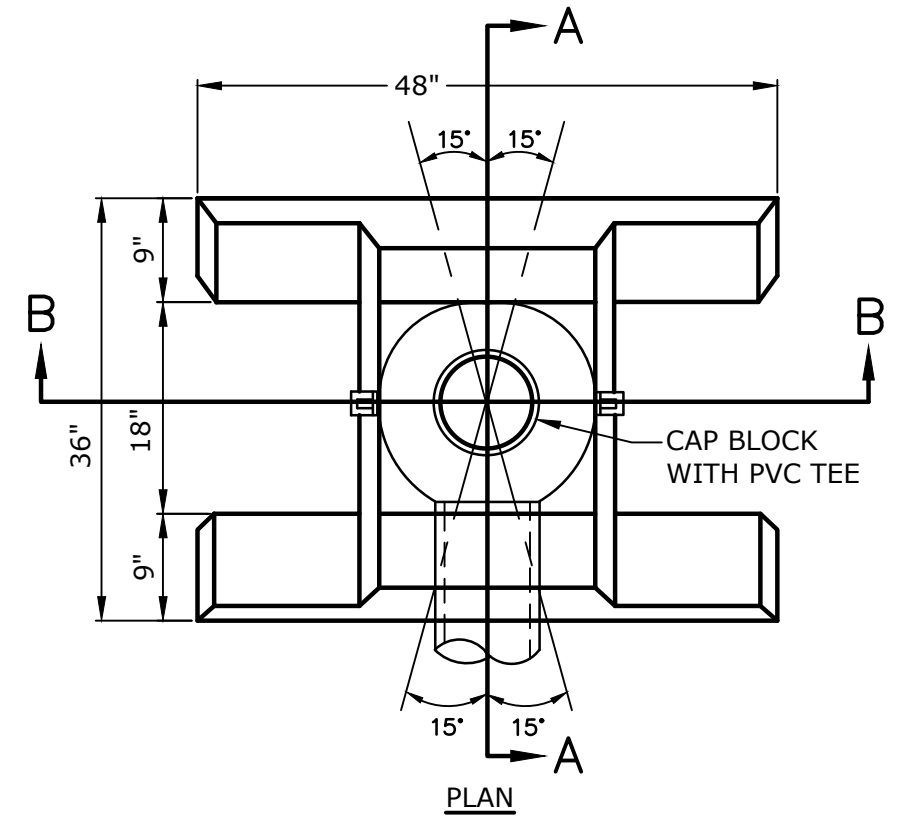
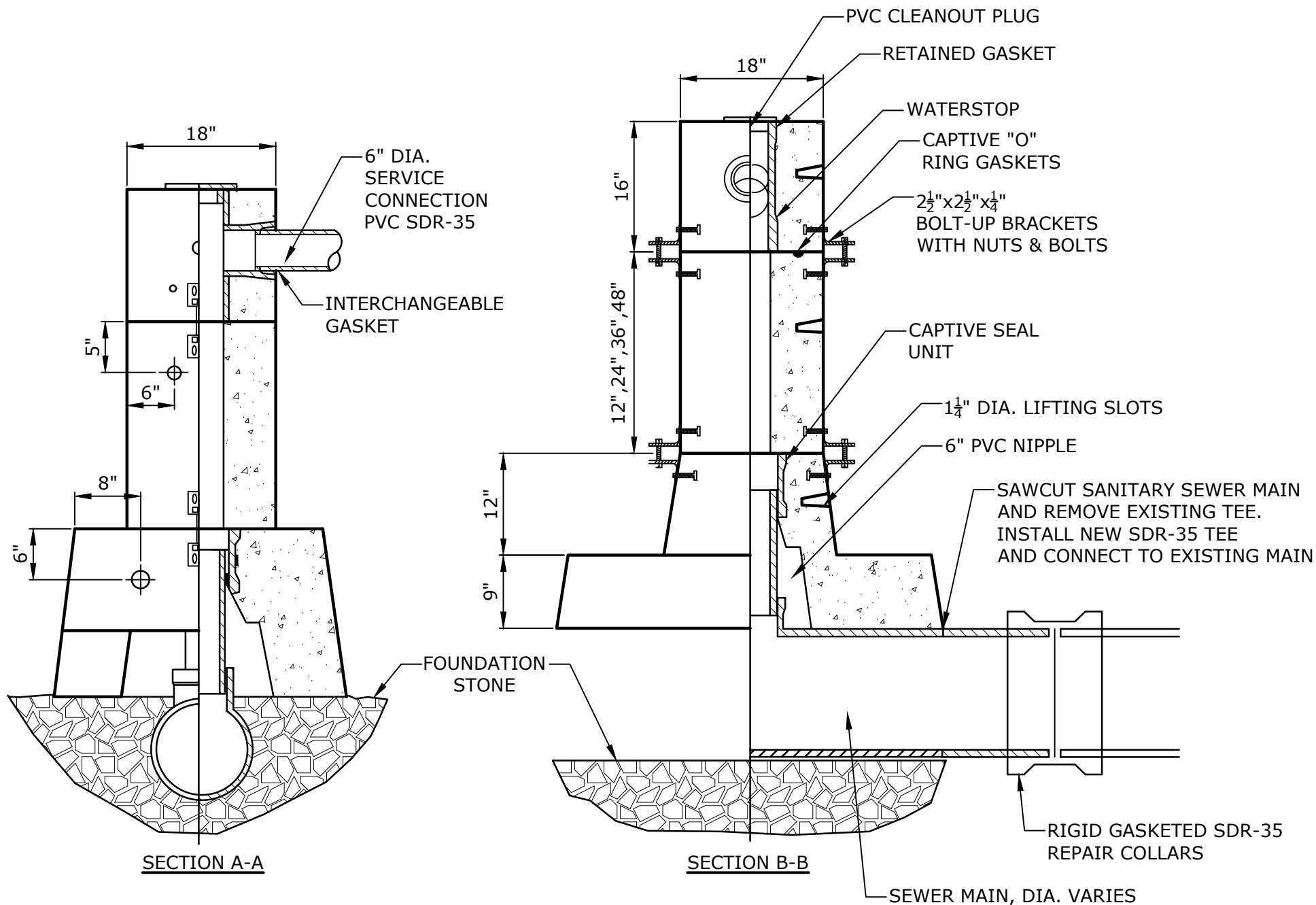
DEPARTMENT OF PUBLIC WORKS
TOWN ENGINEER, TOWN OF WILTON
238 Danbury Road (203) 563-0152

TYPE "C-L" CATCH BASIN DETAIL
WILTON, CONNECTICUT

Scale: NTS Date: 02/21/2019

Drawn by: Grid:

Approved by: F. Smeriglio, PE Sheet: SW-05B



NOTES:

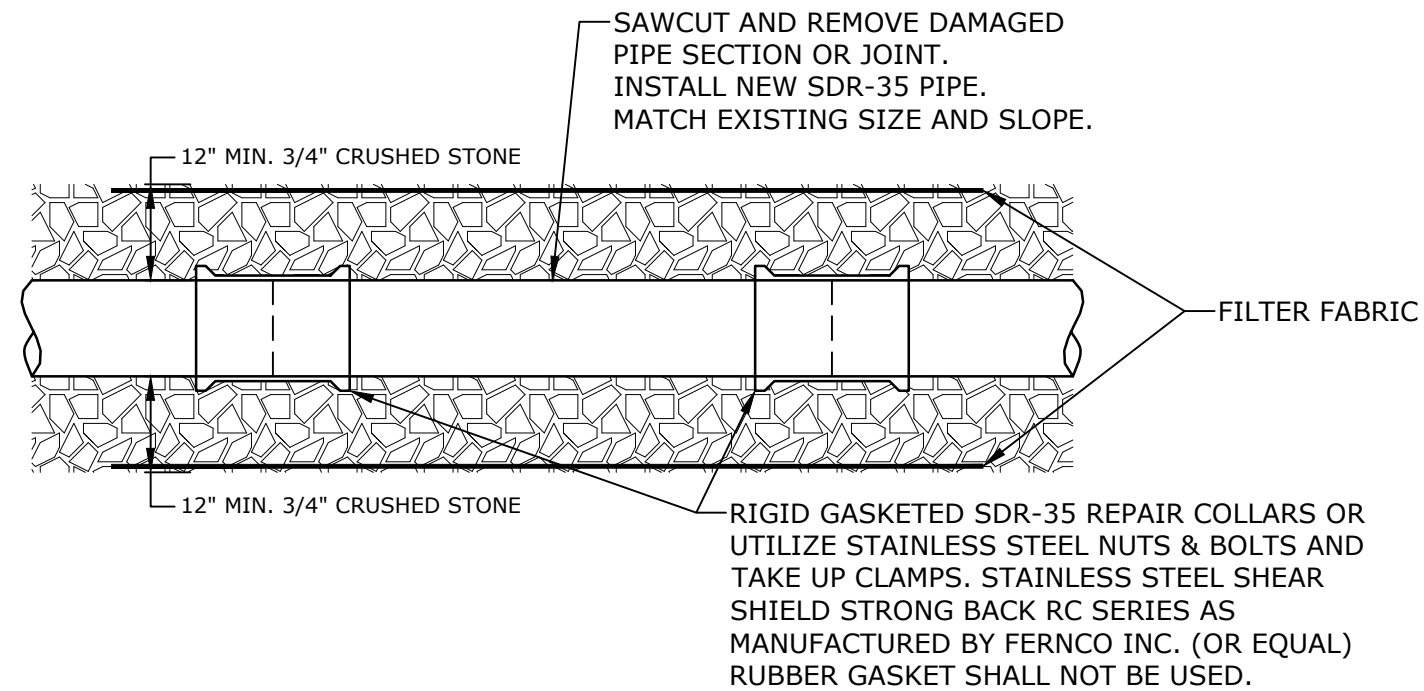
- 1) CONCRETE STRENGTH 5,000 PSI @ 28 DAYS. DENSITY 150 PCF.
- 2) CEMENT PER ASTM C 150-81.
- 3) AIR ENTRAINING PER ASTM C 233-82.
- 4) REINFORCING PER ASTM A 615.
- 5) FILL VOID UNDER BRIDGING SECTION WITH SUITABLE BEDDING MATERIAL.
- 6) PVC FITTINGS PER ASTM D 3034.

DEPARTMENT OF PUBLIC WORKS
TOWN ENGINEER, TOWN OF WILTON
238 Danbury Road (203) 563-0152

PRECAST CHIMNEY DETAIL
WILTON, CONNECTICUT

Scale: NTS	Date: 02/21/2019
Drawn by:	Grid:
Approved by: F. Smeriglio, PE	Sheet: SS-01

PRECAST CHIMNEY
NO SCALE



SANITARY SEWER POINT REPAIR

NO SCALE

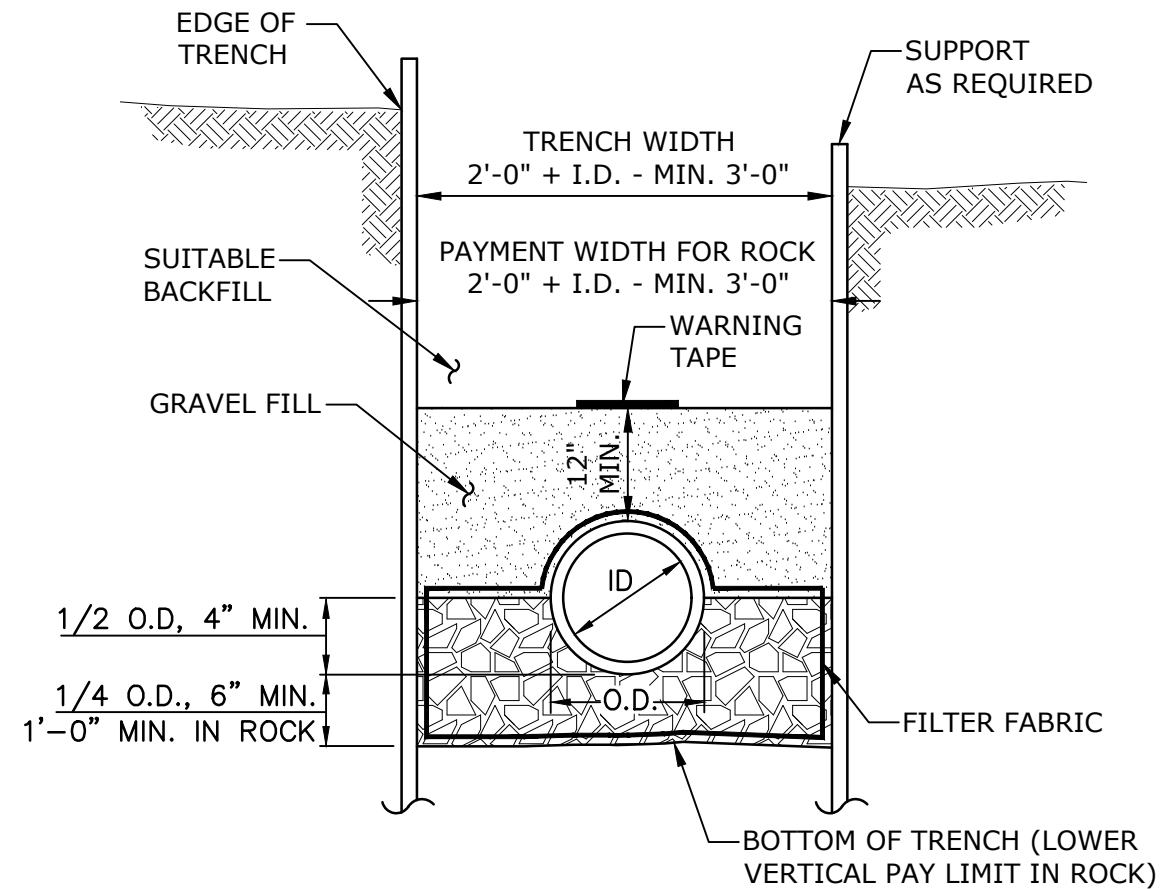
DEPARTMENT OF PUBLIC WORKS
TOWN ENGINEER, TOWN OF WILTON
238 Danbury Road (203) 563-0152

SANITARY SEWER POINT REPAIR DETAIL
WILTON, CONNECTICUT

Scale: NTS Date: 02/21/2019

Drawn by: Grid:

Approved by: F. Smeriglio, PE Sheet: SS-02



TYPICAL SANITARY SEWER TRENCH SECTION

NO SCALE

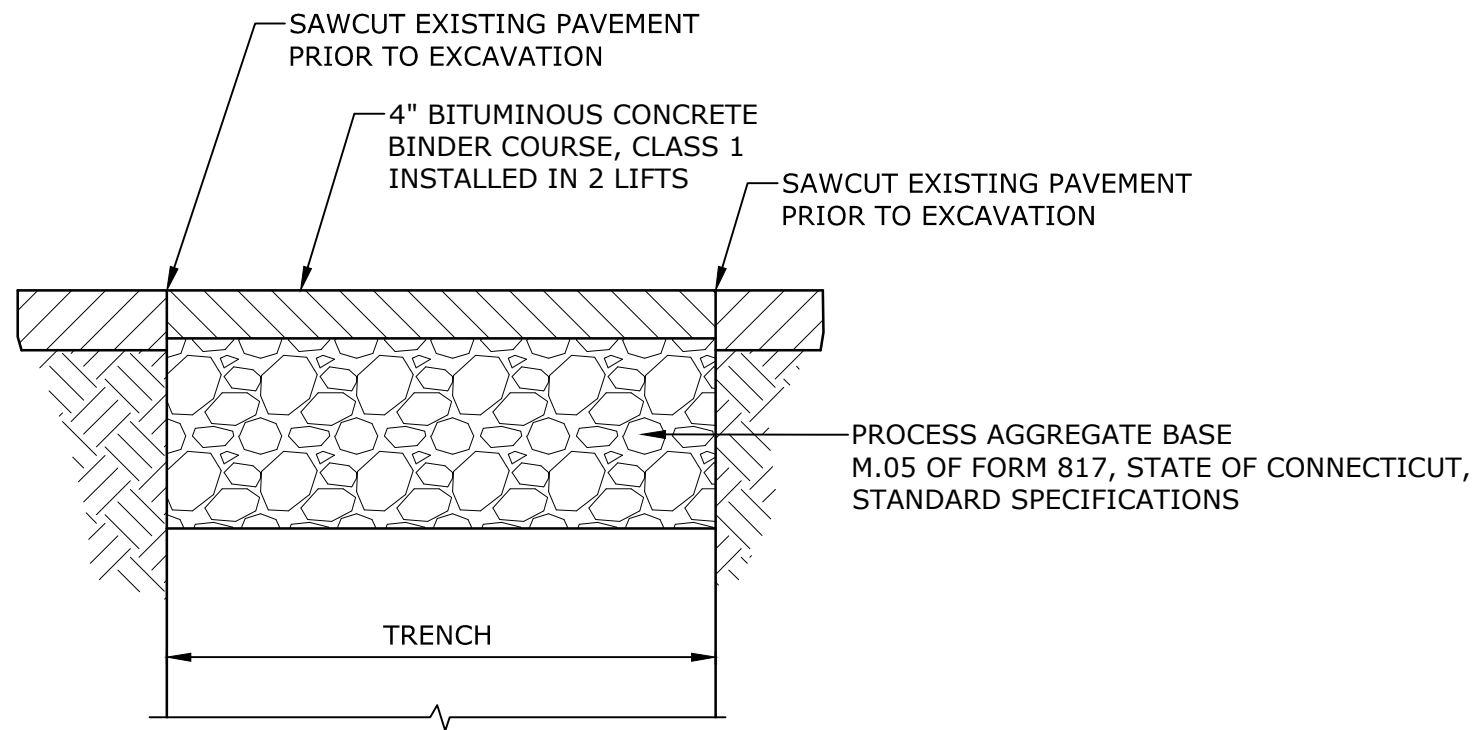
DEPARTMENT OF PUBLIC WORKS
TOWN ENGINEER, TOWN OF WILTON
238 Danbury Road (203) 563-0152

TYPICAL SANITARY SEWER TRENCH SECTION DETAIL
WILTON, CONNECTICUT

Scale: NTS Date: 02/21/2019

Drawn by: Grid:

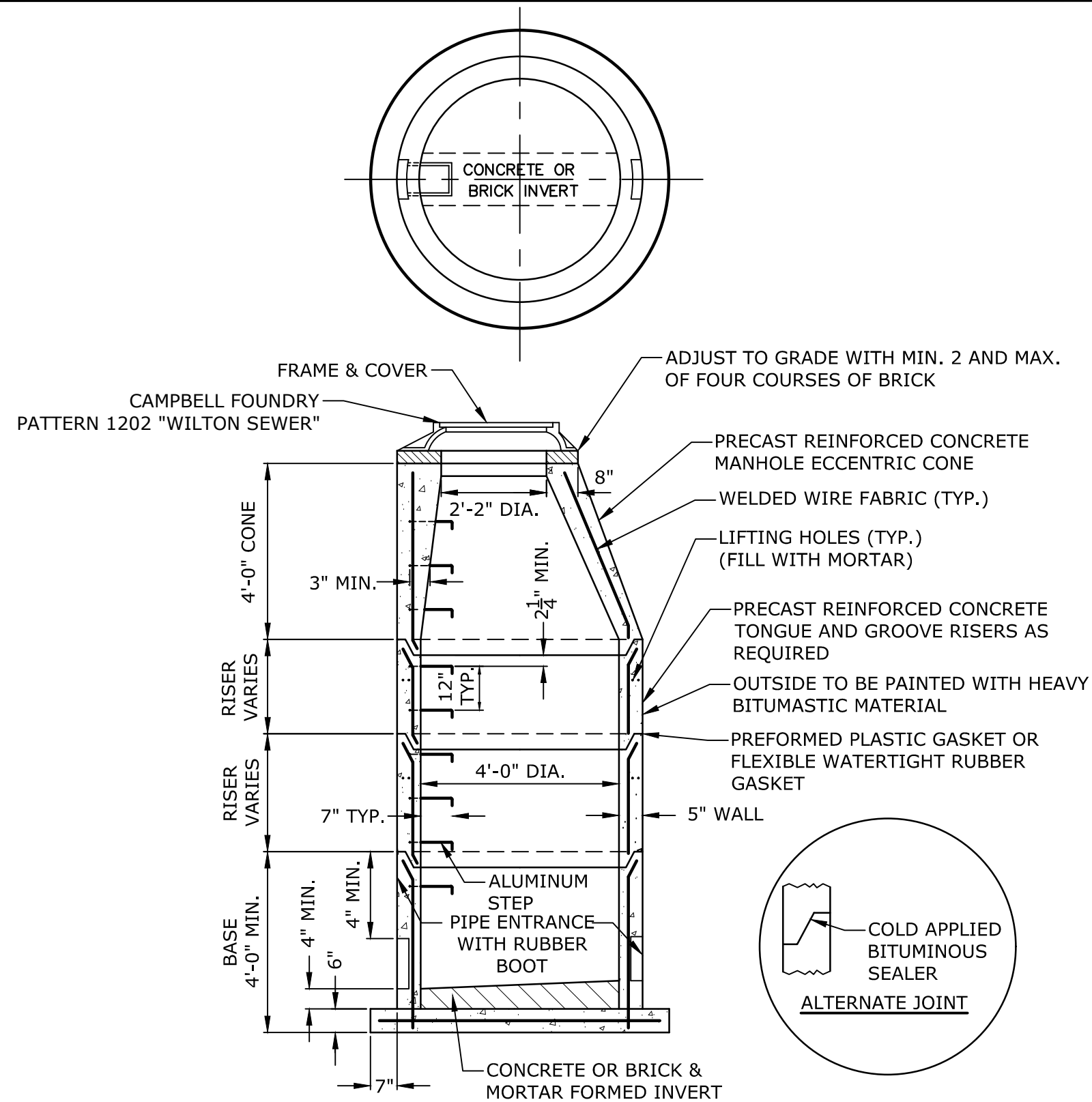
Approved by: F. Smeriglio, PE Sheet: SS-03



TEMPORARY PAVEMENT REPAIR
NO SCALE

DEPARTMENT OF PUBLIC WORKS TOWN ENGINEER, TOWN OF WILTON 238 Danbury Road (203) 563-0152	
TEMPORARY PAVEMENT REPAIR DETAIL WILTON, CONNECTICUT	
Scale: NTS	Date: 02/21/2019
Drawn by:	Grid:
Approved by: F. Smeriglio, PE	Sheet: SS-04

Feb 22, 2019 8:41am Plotted By: sansonem
J:\WW\5043 Town of Wilton\Wilton Details\SS-05.dwg



5' OR 6' DIA. PRECAST BASES MAY BE USED WHEN REQUIRED DUE TO SIZE
OR NUMBER OF PIPES AT THE MANHOLE.
PRECAST REDUCERS WILL BE PLACED ABOVE THE 5' & 6' BASES AS
DIRECTED BY THE ENGINEER.
WALL THICKNESS TO INCREASE 1" FOR EACH 1' OF INSIDE DIAMETER
INCREASE.

PRECAST SANITARY MANHOLE
NO SCALE

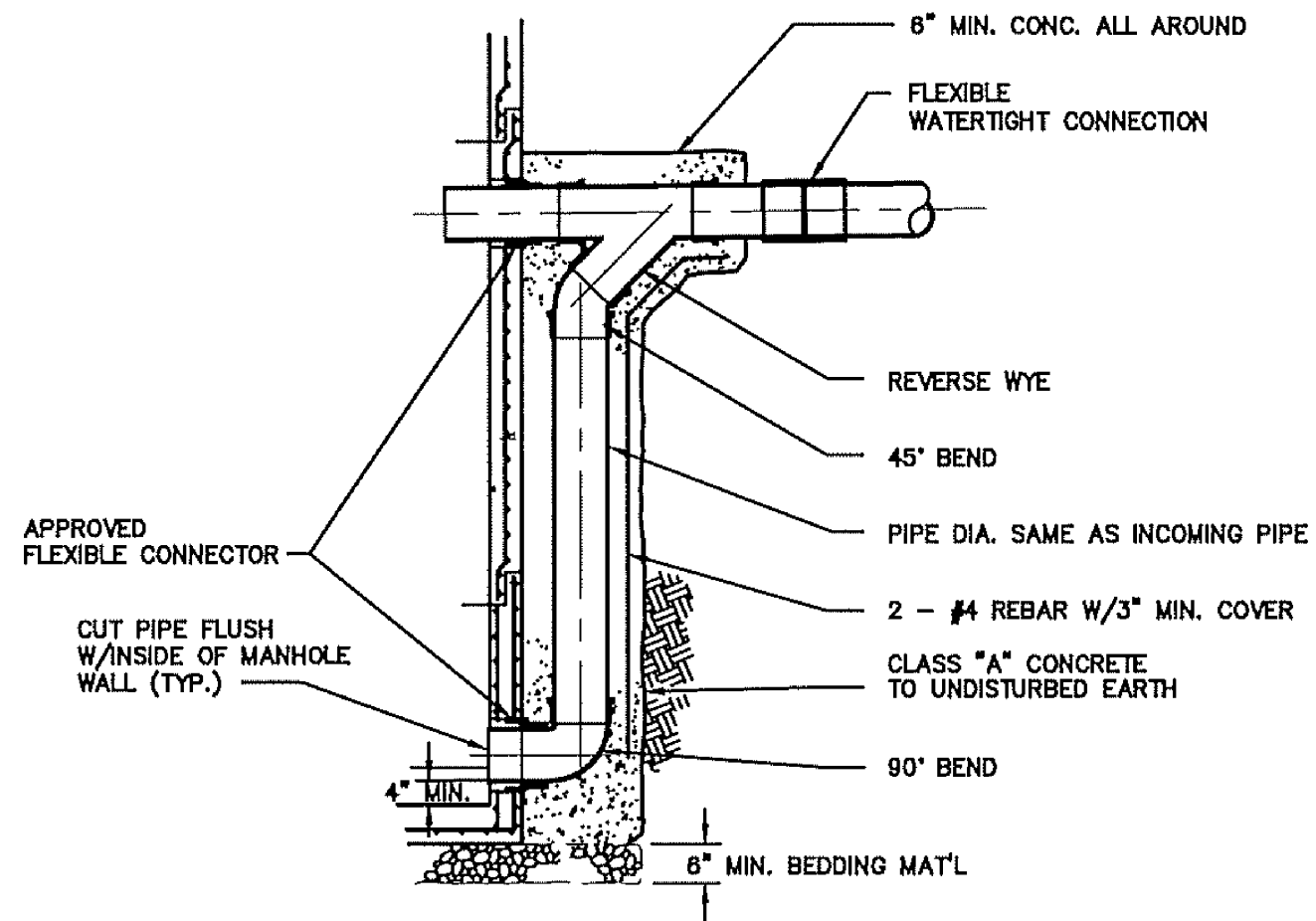
DEPARTMENT OF PUBLIC WORKS
TOWN ENGINEER, TOWN OF WILTON
238 Danbury Road (203) 563-0152

PRECAST SANITARY MANHOLE DETAIL
WILTON, CONNECTICUT

Scale: NTS Date: 02/21/2019

Drawn by: Grid:

Approved by: F. Smeriglio, PE Sheet: SS-05



DROP MANHOLE DETAIL
NO SCALE

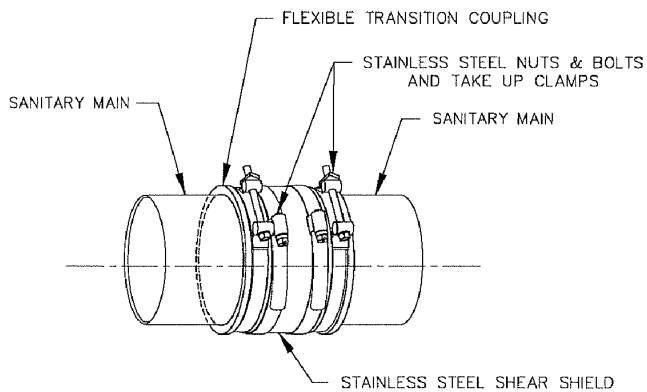
DEPARTMENT OF PUBLIC WORKS
TOWN ENGINEER, TOWN OF WILTON
238 Danbury Road (203) 563-0152

DROP MANHOLE DETAIL
WILTON, CONNECTICUT

Scale: NTS Date: 02/21/2019

Drawn by: Grid:

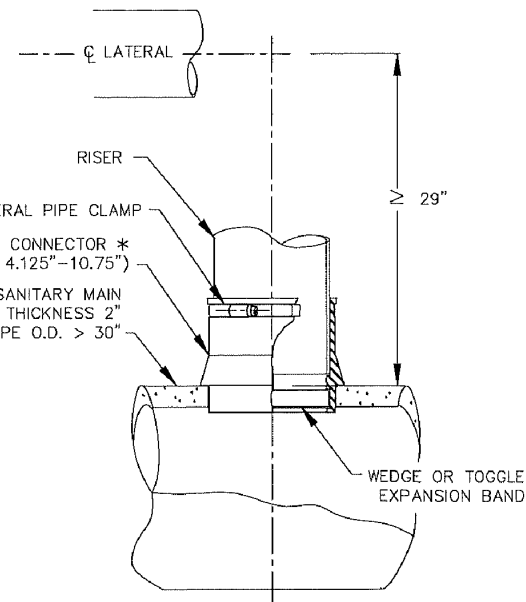
Approved by: F. Smeriglio, PE Sheet: SS-06



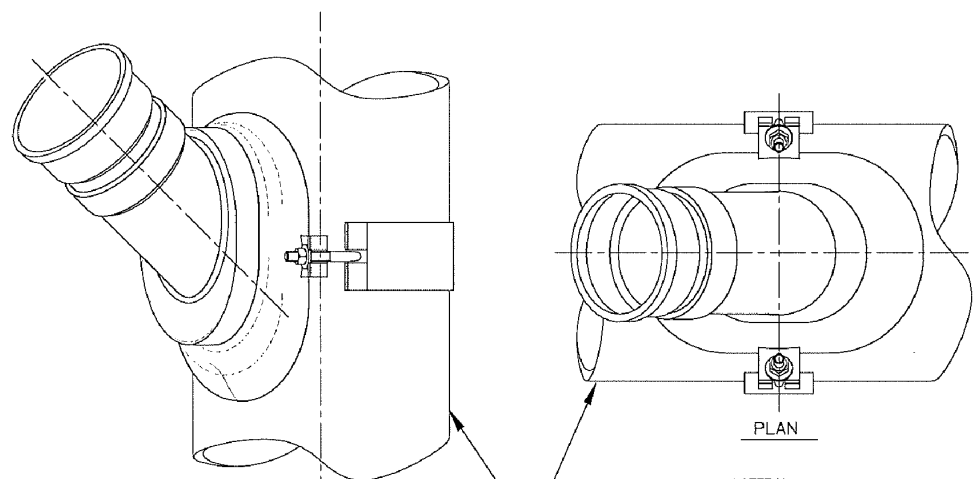
REPAIR COUPLING
28.97" PIPE O.D. MAXIMUM
STRONG BACK RC SERIES
as manufactured by FERNCO INC.
(or Approved Equal)

NOTE:
THIS DETAIL MUST BE USED W/PRECAST CONC. CHIMNEY
WHEN DISTANCE FROM TOP OF MAIN TO
CENTER OF LATERAL IS 29" OR GREATER.
WHERE DISTANCE IS < 29" SEE CITY ENGINEER.
(SEE STD. SHEET #2 FOR PRECAST RISER DETAIL)

1
* FOR INLET PIPE DIAMETERS >10.75"
SUBMIT SHOP DRAWINGS OF FITTINGS FOR APPROVAL.

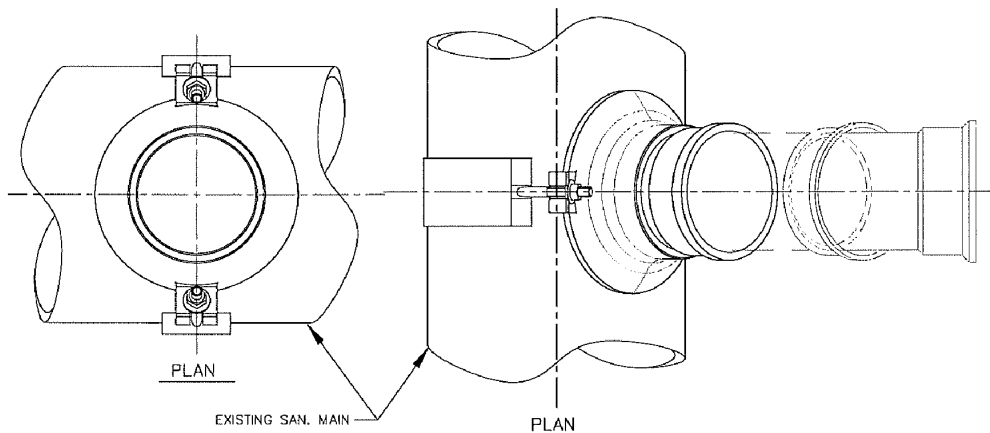


KOR-N-TEE
LATERAL PIPE TO PIPE CONNECTION
INSTALL PER MANUFACTURERS INSTRUCTIONS
as manufactured by NPC
(or Approved Equal)



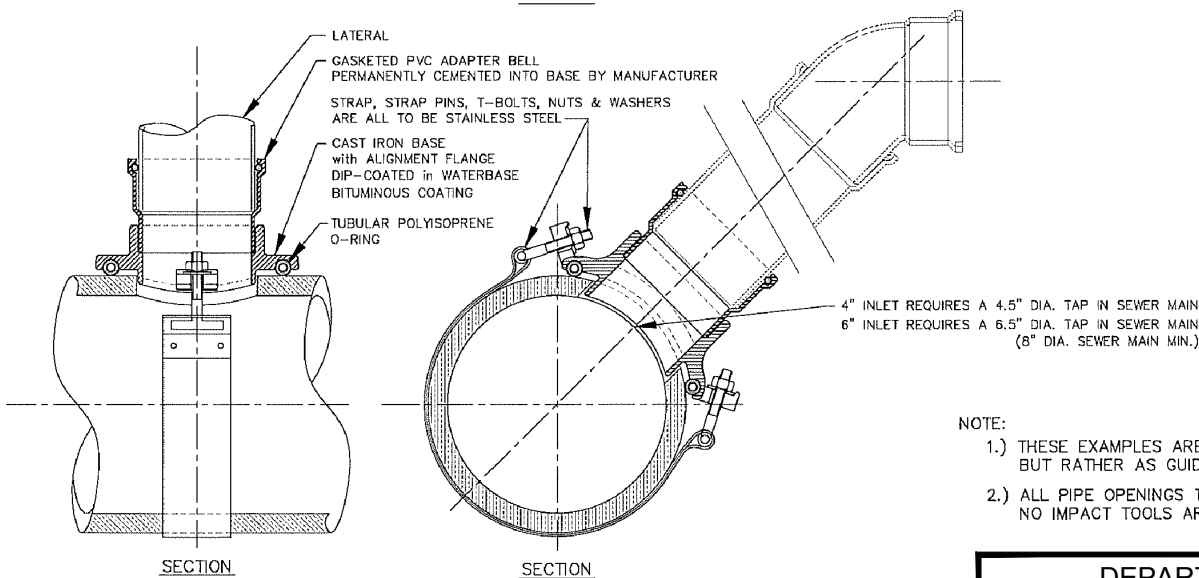
Type "E" Model "H"
SEALITE WYE GRAVITY SEWER SADDLE
GASKETED BELL-SDR 35 PVC
as manufactured by The General Engineering Company
(or Approved Equal)

6.275"min.-30"max. O.D. MAINS

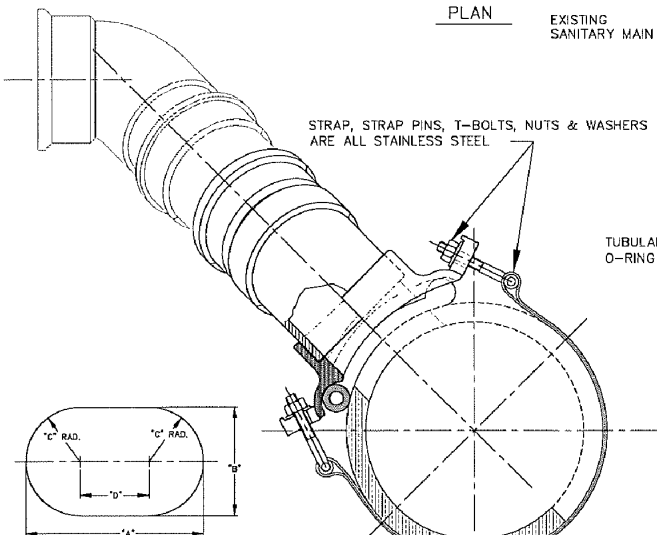


Type "F" Model "H"
SEALITE TEE GRAVITY SEWER SADDLE
GASKETED BELL-SDR 35 PVC
(with Alignment Flange)
as manufactured by The General Engineering Company
(or Approved Equal)

6.275"min.-30"max. O.D. MAINS



NOTE:
1.) THESE EXAMPLES ARE NOT TO BE CONSIDERED ALL-INCLUSIVE,
BUT RATHER AS GUIDES TO CITY ACCEPTED PRACTICES.
2.) ALL PIPE OPENINGS TO BE MADE BY CORE DRILL.
NO IMPACT TOOLS ARE PERMITTED.



Saddle Tap Dimensions

SIZE	A	B	C	D
4" INLET	6.50"	4"	2"	2.50"
6" INLET	9.25"	6"	3"	3.25"

* (8" DIA. SEWER MAIN MIN.)
Template Supplied with
each Wye Saddle

DEPARTMENT OF PUBLIC WORKS TOWN ENGINEER, TOWN OF WILTON 238 Danbury Road (203) 563-0152	
SANITARY GRAVITY SEWER WYE & TEE SADDLE, REPAIR COUPLING, CORE AND TEE CONNECTION DETAIL WILTON, CONNECTICUT	
Scale: NTS	Date: 02/21/2019
Drawn by:	Grid:
Approved by: F. Smeriglio, PE	Sheet: SS-07