

Millstone Farm

Site Walk Photos

April 17, 2019

The purpose of this visit was to look at the
condition of the existing trails and Millstone's
new trail



- A. First section of the existing trail (as shown on the Updated Schedule B Map) that has been blocked with these logs. These logs were cut & placed here clearly to direct people to Millstone's new trail.



- B. One of two (2) bridges along Millstone's new trail. This water crossing is simply half of a log with some supporting hand rails. This type of crossing will likely rot quicker than if it was pressure treated wood.



C. Millstone's new trail already blocked by a fallen dead tree.



D. The placement of stepping stones seems to be done without regard to the physical abilities of an average hiker/walker.



E. This trail section was designed to be difficult to walk with the roots, rocks etc.



F. The placement of stepping stones seems to be done without regard to the physical abilities of an average hiker/walker.



G. This section of the existing trail (as shown on the Updated Schedule B Map) looks like it is planned to be blocked with fencing given the installation of these fence posts.



H. This section of the existing trail (as shown on the Updated Schedule B Map) that has been blocked with a large stockade fence.



I. This section of the existing trail (as shown on the Updated Schedule B Map) that has been blocked with a large stockade fence.



J. Unsightly materials storage area and a recreational boat stored in the protected property.



K. Export containers are stored on the protected property.



L. Export containers are stored on the protected property.



M. View showing long stockade fencing which limits views of the fields from Millstone's new trail.



N. View showing a new hedge row where land was cleared for views. This will limit views of the fields from Millstone's new trail.



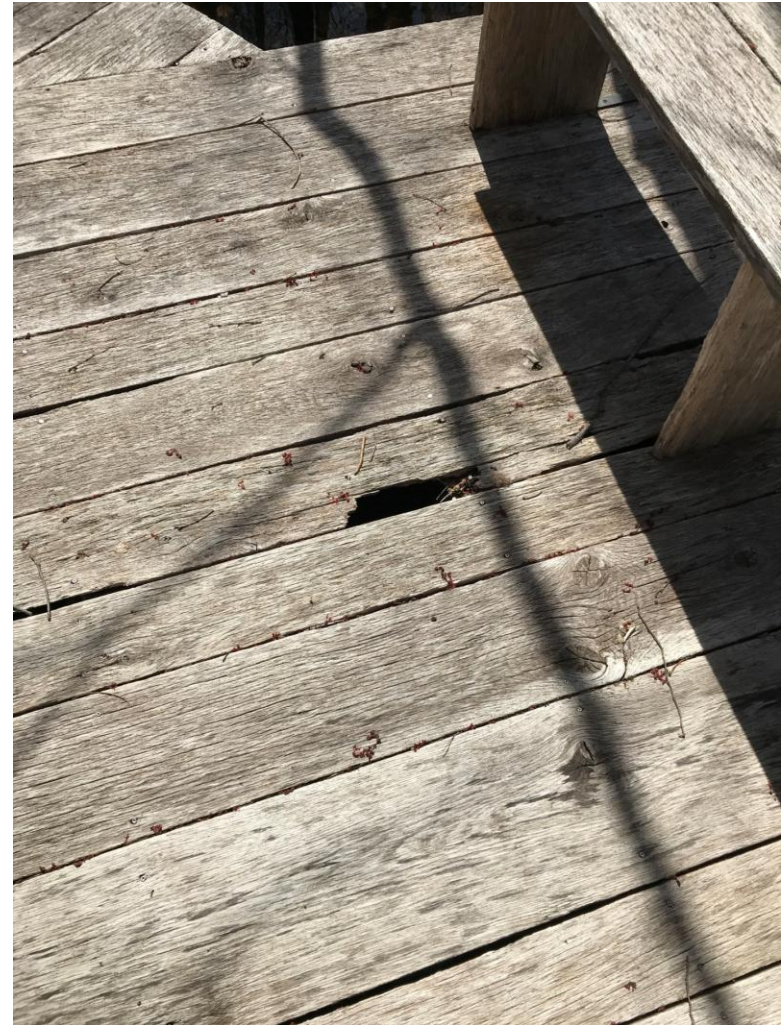
O. View showing a new hedge row where land was cleared for views. This will limit views of the fields from Millstone's new trail.



P. View showing a new hedge row where land was cleared for views. This will limit views of the fields from Millstone's new trail.



Q. This section of Millstone's new trail was very wet and muddy because it was constructed in a wetland. This area is essentially impassable unless a hiker wears high waterproof boots.



R. Pieces of the existing boardwalk are rotten to the point where holes are forming.



S. The existing trail (as shown on the Updated Schedule B Map) has not been cleared and marked. This shows an area where the trail should be defined and marked as per the Conservation Restriction Amendment.



T. The existing trail (as shown on the Updated Schedule B Map) has not been cleared and marked. This shows an area where the trail should be defined and marked as per the Conservation Restriction Amendment.



U. Material storage area



V. The existing trail (as shown on the Updated Schedule B Map) has not been cleared and marked. This shows an area where the trail should be defined and marked as per the Conservation Restriction Amendment.



W. The existing trail (as shown on the Updated Schedule B Map) has not been cleared and marked. This shows an area where the trail should be defined and marked as per the Conservation Restriction Amendment.



X. This section of the original stonewall has been removed.



Y. The existing trail (as shown on the Updated Schedule B Map) has not been cleared and marked. This shows an area where the trail should be defined and marked as per the Conservation Restriction Amendment.



Z. The existing trail (as shown on the Updated Schedule B Map) has not been cleared and marked. This shows an area where the trail should be defined and marked as per the Conservation Restriction Amendment.



AA. The topography in this area was altered. Fill material was added across this field and a retaining was constructed. This raised the grades several feet and is prohibited in the Conservation Restriction. See Section 2.1(b) Prohibition of Earth Altering Activities.



BB. This electric fence was placed along Millstone's new trail and the existing trail (as shown on the Updated Schedule B Map) has not been marked. An electric fence should not be located along a trail designed for public recreation.



CC. The grades of Millstone's new trail in this area are extremely steep. This will result in future erosion and the trail is barely able to be walked especially when covered with leaves.



DD. The grades of Millstone's new trail in this area are extremely steep. This will result in future erosion and the trail is barely able to be walked especially when covered with leaves.



EE. Trails in general are too narrow and not even susceptible to two persons walking side by side.



FF. Trails in general are too narrow and not even susceptible to two persons walking side by side.



GG. New bridge.



HH. Older bridge where the existing trail (as shown on the Updated Schedule B Map) is supposed to be cleared and marked.



II. Access to the public trail from Millstone Road is blocked by this farm fence.



JJ. Access to the public trail from Millstone Road is blocked by this farm fence.



KK. The existing trail (as shown on the Updated Schedule B Map) has not been cleared and marked.