

# o Mountain Road

by Aleksandra Moch,  
Environmental Consultant



## Summary of provided revisions

- Contractor letter from Joseph Cutrone, F&G Construction Inc regarding feasibility of the driveway installation within the narrow areas.
- Retaining wall was shortened and relocated
- Alternative crossing is proposed and other alternatives were investigated
- One in-ground infiltration system was eliminated
- The driveway had moved slightly away from the property line
- We met with the town engineering department



Alternative  
crossing

bridge



\$1,551,000

**B** | **BRIDGE**  
BROTHERS



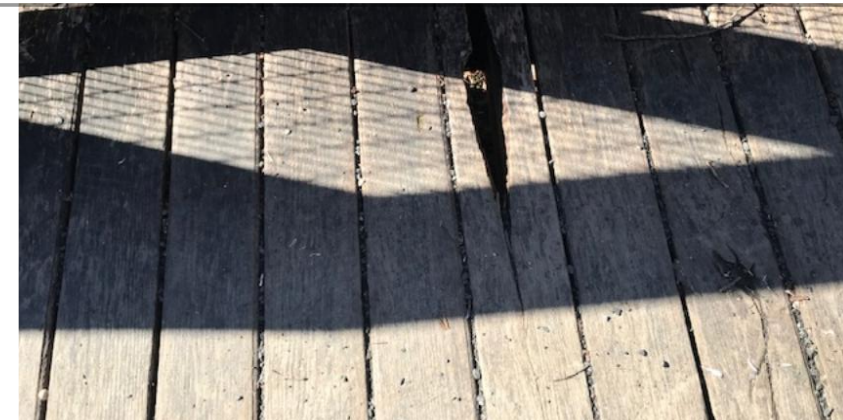


# Alternative crossing

Helical piles  
foundation  
and timber  
bridge



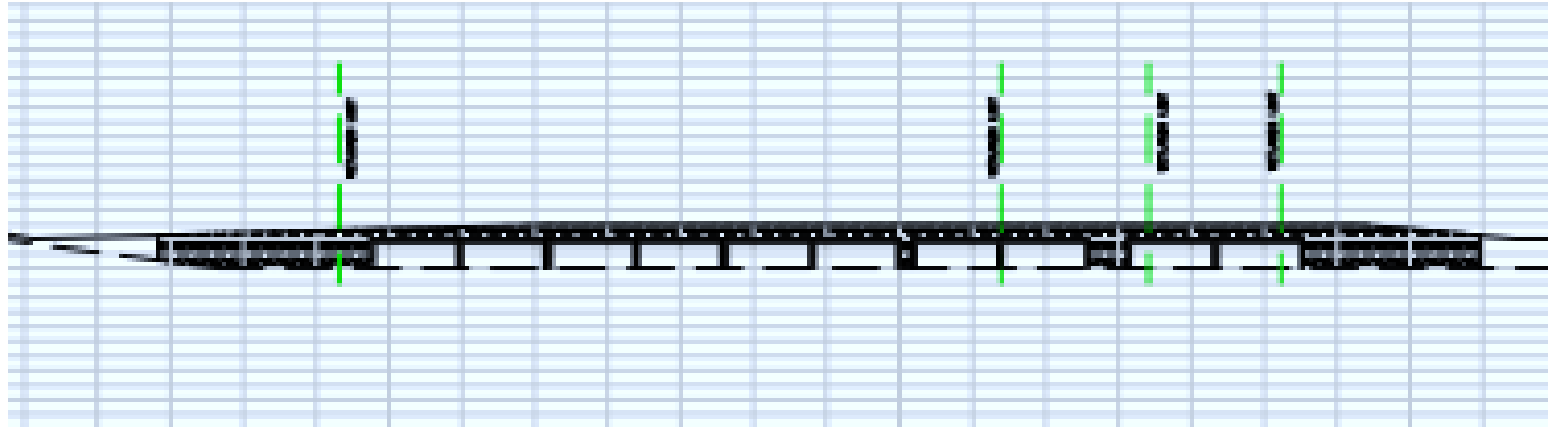
Norwalk River  
Valley Trail





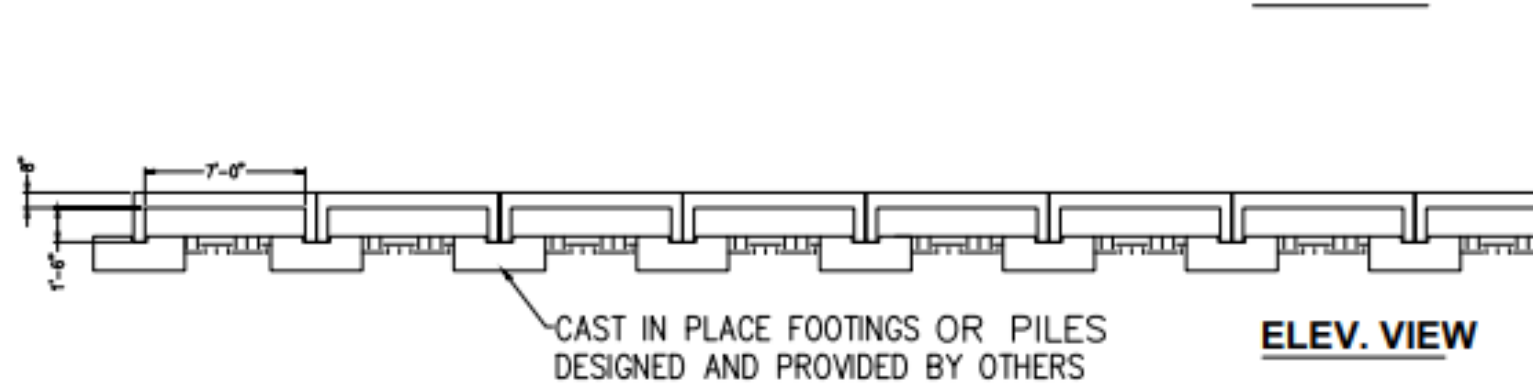
Alternative  
crossing

closed bottom  
box culvert



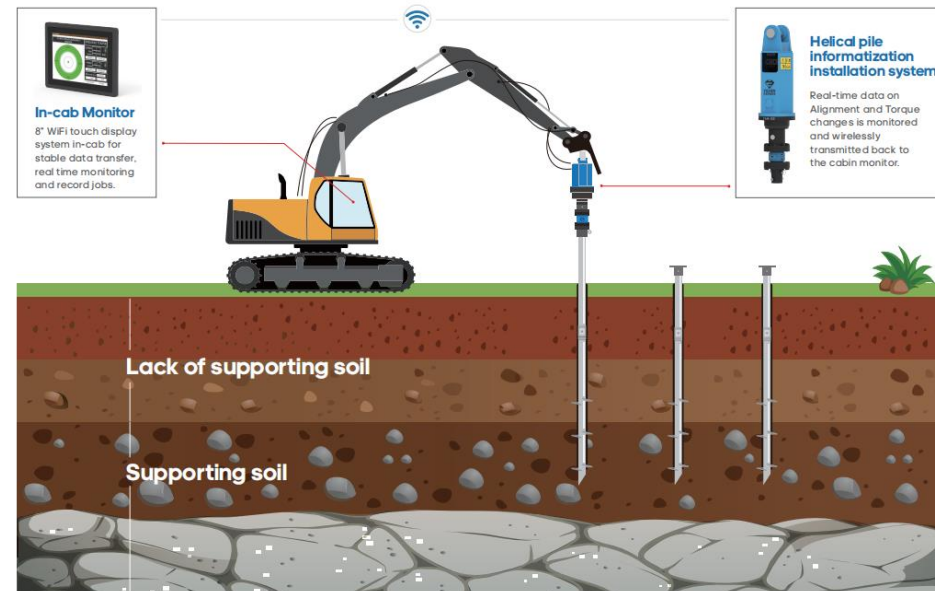
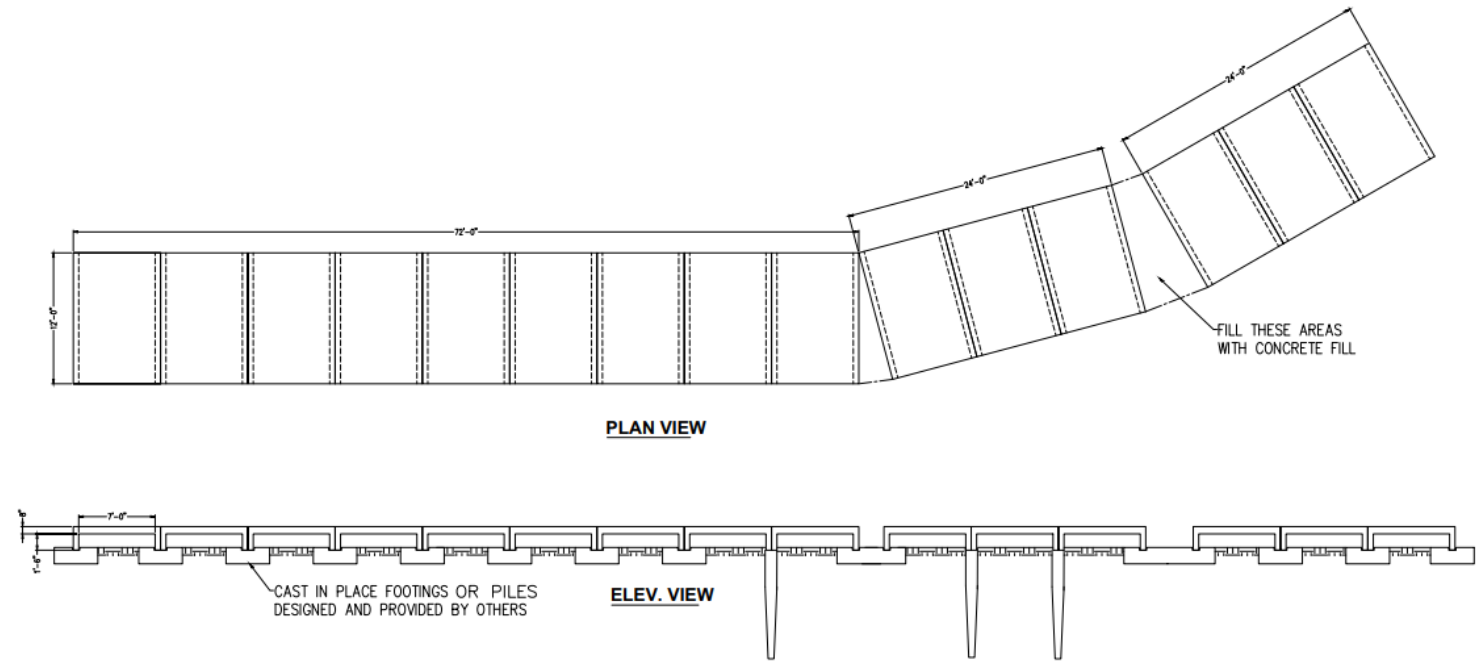
# Alternative crossing

## Open bottom box culvert



# Alternative crossing

## Combination: open bottom culverts and helical piles



# Geotechnical testing requirement

## **ATLANTIC CONSULTING & ENGINEERING, LLC**

525 John Street • Second Floor

Bridgeport, CT 06604

Phone (203)336-4422 Fax (203)336-1769

---

- One truck rig and crew to drill up to 4 holes up to 22 feet deep to naturally deposited inorganic material or rock.
- Engineering report summarizing in-place materials and recommendations for foundation system design.

### **Geotechnical:**

#### **Field Exploration**

The proposed field exploration program scope includes the following:

- Utilize One-Call to locate public utilities and for an additional fee a private underground utility location company to clear private utilities, if necessary.  
The borings will be drilled to the planned depths unless instability or practical refusal is encountered;
- Collect soil samples from the borings at 5 foot intervals below existing grade;
- Samples will be obtained using a Modified California Sampler or Standard Split-Spoon Sampler depending on soil conditions in general accordance with ASTM standard procedures;
- Record Standard Penetration Test blow counts (SPT-N values) in granular soils;
- Backfill the boreholes in accordance with state and local requirements;
- Soil cuttings will be spread on site at the boring locations or at a designated area within the project site.