

WATERING GUIDE LINES FOR NEW PLANTS

1. WATER OF ALL NEW PLANT MATERIAL ON THE PLANTING PLAN SHALL BE WATERED DURING THE FIRST YEAR OF ESTABLISHMENT PERIOD. GENERAL GUIDELINE FOR WATERING OF NEW PLANTS DURING ESTABLISHMENT PERIOD IS 1" PER WEEK.
2. THE CONTRACTOR/OWNER SHALL PROVIDE WATER BY HOSE FROM THE RESIDENCE OR IF NEEDED SUPPLEMENTAL WEAS FROM A WATER TROUGH. WATER SHALL BE APPLIED TO THE NEW PLANTS AND PROVE WATER TO A HOSE SYSTEM THAT REACHES THE NEW PLANTS.
3. ALL WATER SHALL SOURCED FROM THE BEHRENS PROPERTY. NO WATER SHALL BE TAKEN FROM THE RESERVOIR ON SNEW LAND.

NONNATIVE INVASIVE

SPECIES CONTROL NOTES:

1. REMOVAL OF NONNATIVE INVASIVE PLANTS TO BE ONGOING OVER A TWO (2) YEAR PERIOD WITHIN THE PROPOSED MITIGATION PLANTING AREA.
2. THE LANDSCAPE CONTRACTOR SHALL CONTACT THE PROJECT ENVIRONMENTAL CONSULTANT WITH ANY QUESTIONS REGARDING THE CONTROL OR IDENTIFICATION OF INVASIVE NONNATIVE SPECIES.
3. THE LANDSCAPE CONTRACTOR SHALL FOLLOW THE METHODS AND RECOMMENDATIONS RECOMMENDED BY THE HERBICIDE MANUFACTURER AND COMPLY WITH ALL FEDERAL, STATE AND LOCAL LAWS. A PERMIT FROM THE STATE OF CONNECTICUT IS REQUIRED FOR APPLICATION TO A BODY OF WATER.
4. ALL CUT OR PULLED INVASIVE NONNATIVE PLANT MATERIALS SHALL BE DISPOSED OF APPROPRIATELY AND COMPLY WITH THE 2004 DEEP / UCONN "GUIDELINES FOR DISPOSAL OF TERRESTRIAL INVASIVE PLANTS." ALL CUTTINGS SHALL BE COLLECTED AND PLACED ONSITE ON A PLASTIC TARP OR ON AN ASPHALT PAVEMENT AREA AND SUN DRIED UNTIL DEAD. AND CUTTINGS FROM BRANCHES BEING IN CONTACT WITH ANY BODY OF WATER SHALL BE BAGGED AND REMOVED FROM THE SITE OR INCINERATED.
5. CONTROL NONNATIVE INVASIVE SPECIES AS FOLLOWS:
  - A. FOR ASIATIC BITTERSWEET, MULTIFLORA ROSE, WINEBERRY AND EUONYMUS.

STEP #1: PRIOR TO HERBICIDE TREATMENT, PULL OR CUT THE GROWING SEASON AND REMAIN STRAIGHT OR EARLY FALL IS PREFERRED). REMOVE ROOTS IF FEASIBLE. DISPOSE OF CUT PLANT MATERIAL AS OUTLINED ABOVE.

STEP #2: IMMEDIATELY AFTER CUTTING, TREAT CUT STEMS WITH AN APPROPRIATE HERBICIDE (SUCH AS ROUND-UP) AT THE RATE AND METHODS RECOMMENDED BY THE MANUFACTURER. CARE SHALL BE TAKEN TO AVOID HERBICIDE CONTACT WITH NATIVE OR OTHER DESIRABLE VEGETATION.

STEP #3: CHECK CONTROL AREA MONTHLY DURING THE GROWING SEASON FOR NEW GROWTH. SPOT HERBICIDE AS NEEDED FOR CONTROL.

CARE SHALL BE TAKEN TO AVOID HERBICIDE CONTACT WITH NATIVE OR OTHER DESIRABLE VEGETATION. IN PLANTS TO BE CONTROLLED, THE HERBICIDE SHALL NOT BE SPRAYED ONTO THE TARGET PLANTS. IN THESE AREAS THE HERBICIDE SHALL BE APPLIED WITH A BRUSH OR CLOTH.

PLANTING AND SEEDING NOTES:

1. EXACT LOCATION OF PROPOSED PLANTINGS AND SPECIES TYPES MAY VARY FROM THIS PLAN BASED ON SITE PLAN REVISIONS AND/OR ACTUAL FIELD CONDITIONS.

2. SEED AREAS AT THE METHODS AND 125% THE APPLICATION RATE RECOMMENDED BY THE MANUFACTURER. THE SEED SHALL BE SPREAD ON THE PREPARED SOIL. LIGHTLY RAKED TO ESTABLISH GOOD SOIL CONTACT AFTER SOWING, AND MULCHED WITH A 2 INCH LOOSE LAYER OF CLEAN OAT STRAW OR COMMERCIAL WOOD FIBER PRODUCTS APPLIED BY HAND OR BY HYDROSEEDING ON SLOPES LESS THAN 10%. A HOUSE COAT OF PERENNIAL RYE GRASS AT THE RATE OF 40 LBS./ACRE SHALL BE ADDED TO THE SEED MIX ON SLOPES OF EXCESS OF 10% TO PREVENT EROSION. SEEDING SHALL BE COMPLETED BY THE END OF THE GROWING SEASON. SEEDING SHALL BE COMPLETED BY THE ARCHITECT PRIOR TO USE. UNLESS OTHERWISE SPECIFIED, MAINTAIN SEED AREAS AS RECOMMENDED BY THE MANUFACTURER, EXCEPT FOR LAWN AREAS. DO NOT FERTILIZE AREAS TO BE SEDED UNLESS SPECIFIED BY THE MANUFACTURER. SEED AREAS AS PER THE FOLLOWING SCHEDULE:

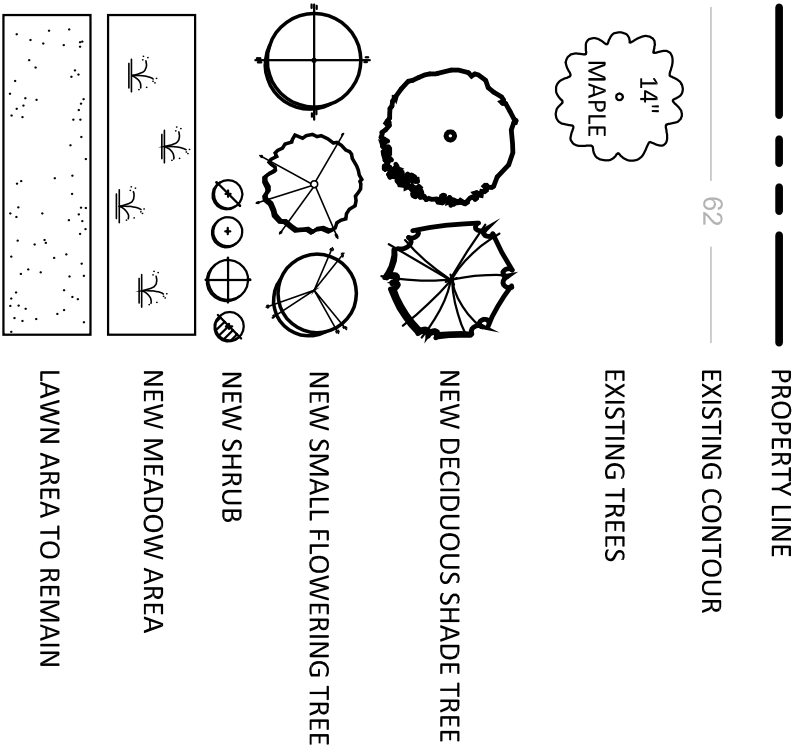
- A. WETLAND BUFFERS (UPLAND AREAS): SEED THIS AREA WITH "NEW ENGLAND CONSERVATION / WILDLIFE SEED MIX" BY FROM NEW ENGLAND WETLAND PLANTS, INC. (413-548-8000).
- B. WILDFLOWER MEADOW: SELECTED AREAS IN THE MEADOW SHALL BE SEDED WITH "NEW ENGLAND WILDFLOWER MIX" BY NEW ENGLAND WETLAND PLANTS, INC. (413-548-8000).
- C. WOODLAND AREA (WOODY AND HERBACEOUS PLANTS): SEED THIS AREA WITH "NEW ENGLAND ROADSIDE MATRIX UPLAND SEED MIX" BY NEW ENGLAND WETLAND PLANTS, INC. (413-548-8000).

3. THE CREATION OF THE NEW MEADOW WITHIN DISTURBED AREAS SHALL BE ESTABLISHED BY SEEDING WITH "NEW ENGLAND NATIVE WARM SEASON GRASS MIX" BY NEW ENGLAND WETLAND PLANTS, INC. (413-548-8000) AT THE METHODS RECOMMENDED BY THE MANUFACTURER. MAINTAIN MEADOW AT A 6" HEIGHT THE FIRST GROWING SEASON FOLLOWED BY MOWING TO A 6" HEIGHT DURING THE LATE FALL OR EARLY WINTER MONTHS.

4. IT IS RECOMMENDED FOR THE CREATION OF A NEW MEADOW TO BE ESTABLISHED BY LIMITING THE MOWING OF EXISTING LAWN GRASSES TO A 4-6" HEIGHT ONCE PER YEAR DURING THE LATE FALL OR EARLY WINTER MONTHS. IF DESIRED THE NEW MEADOW AREA MAY BE ALLOWED TO REVERT NATURALLY TO WOODLAND.

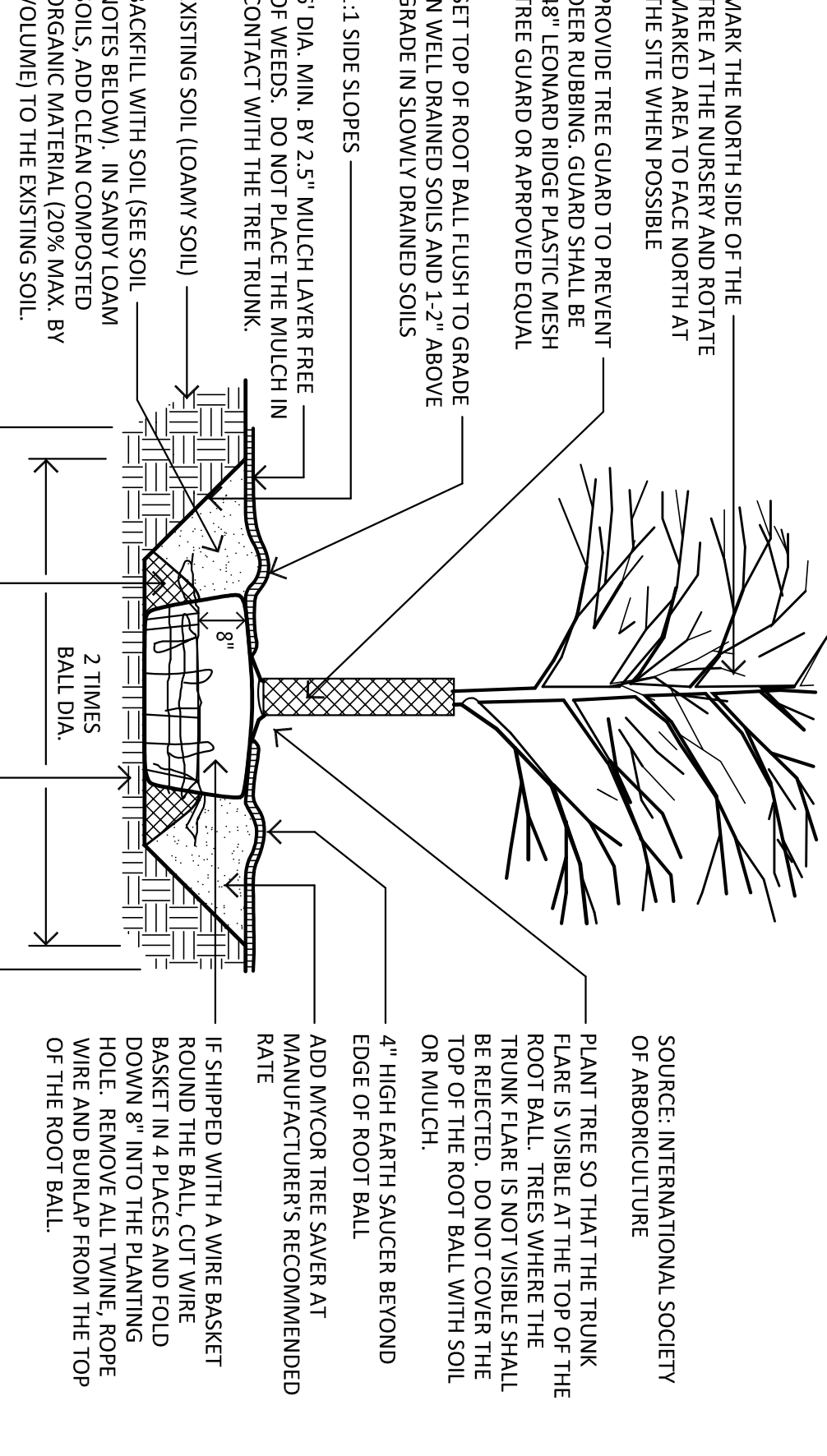


LEGEND



GENERAL NOTES:

1. EXISTING SITE INFORMATION TAKEN FROM A DIGITAL AUTOCAD PLANTING PLAN AND PHOTO SURVEYS. SEE THIS PLAN FOR ADDITIONAL INFORMATION.
2. CONTACT "CALL BEFORE YOU DIG" AT 1-800-922-4455 TO HAVE UNDERGROUND UTILITY LINES MARKED BY THEM PRIOR TO START OF ANY EXCAVATION WORK.
3. EXACT LOCATION OF PROPOSED PLANTINGS AND SPECIES TYPES MAY VARY FROM THIS PLAN BASED ON SITE PLAN REVISIONS AND/OR ACTUAL FIELD CONDITIONS.
4. PLANTING METHODS SHALL BE IN ACCORDANCE WITH THE "AMERICAN STANDARDS FOR NURSERY STOCK," LATEST EDITION, AS PUBLISHED BY THE AMERICAN NURSERY & LANDSCAPE ASSOCIATION.
5. THE CONTRACTOR SHALL VERIFY WITH THE PROJECT ENGINEER THAT THE NEW PLANTINGS DO NOT INTERFERE WITH EXISTING AND/OR PROPOSED UTILITIES, SIGHT LINES, AND/OR STRUCTURES.
6. IN THE EVENT OF A DISCREPANCY BETWEEN THE QUANTITIES OF PLANTS IN THE PLANT LIST AND THE ACTUAL QUANTITIES SHOWN ON THE PLAN, THE PLAN SHALL GOVERN.
7. THIS PLAN FOR PLANTING PURPOSES ONLY. SEE PLANS BY OTHERS FOR ADDITIONAL INFORMATION.



- SOIL NOTES:
1. CLEAN FILL MATERIAL SHALL BE A LOAMY SOIL. LOAMY SOILS INCLUDE THE FOLLOWING USDA TEXTURAL CLASSIFICATIONS AND HAVE A CLAY CONTENT BETWEEN 7% TO 27%. LOAM, SANDY LOAM AND SILT LOAM. NOTE THAT SOILS AT THE OUTER LIMITS OF THE LOAM CLASSIFICATION MAY PRESENT SPECIAL PLANTING PROBLEMS NOT ANTICIPATED BY THE DETAIL. THE SOIL STRUCTURE SHALL NOT BE PLANT OR WEBSITE. A SUITABLE PLANTING SOIL IS 65% SAND, 20% COMPOST, AND 15% CLAY LOAM.
  2. THE SOIL SHALL BE MOIST AND NOT DRY. IT SHALL BE MOIST ENOUGH TO STAY TOGETHER WITH A MINIMUM OF 1.5% BY DRY WEIGHT OF ORGANIC MATTER. THE SOIL MUST NOT BE SO COMPACTED AS TO IMPEDED ROOT GROWTH OR DRAINAGE.
- STAKING NOTES:
1. STAKE TREES ONLY IF IT IS EXPECTED THAT THE TREE WILL NOT BE ABLE TO SUPPORT ITSELF AND REMAIN STRAIGHT. STAKE TREES FOR THE FOLLOWING REASONS:
    - A. THE TREE IS INSTALLED WITHIN VERY SANDY SOIL OR VERY WET CLAY SOIL.
    - B. THE TREE IS LOCATED IN A PLACE OF EXTREMELY WINDY CONDITIONS.
  2. CONTACT THE PROJECT LANDSCAPE ARCHITECT FOR STAKING DETAIL IF NEEDED.
- TREE PLANTING DETAIL
- SCALE: NOT TO SCALE

PLANT LIST

QTY	KEY	BOTANICAL NAME	COMMON NAME	SIZE	ROOT	REMARKS
SHADE TREES						
4	AR	ACER RUBRUM	RED MAPLE	2-2.5" CAL.	B&B	FULL
4	AS	ACER SACCHARUM	SUGAR MAPLE	2-2.5" CAL.	B&B	FULL
3	CO	CORYLIA OVATA	HICKORY	2-2.5" CAL.	B&B	FULL
3	OB	QUERCUS BICOLOR	SWAMP WHITE OAK	2-2.5" CAL.	B&B	FULL
UNDERSTORY TREES						
9	AC	AMELANCHIER CANADENSIS	SHAD	5-6" HT.	B&B	MULTI-STEM
3	CF	CORNUS FLORIDA	FLOWERING DOGWOOD	5-6" HT.	B&B	FULL
3	WK	CRATAEGUS WINTER KING	WINTER KING HAWTHORN	6-8" HT	B&B	FULL
SHRUBS						
10	IG	ILEX GLABRA	INBERRY	2-3" HT.	CONT.	
6	LB	LINDERA BENZON	SPECIEBUSH	2-3" HT.	CONT.	
10	GL	RHUS AROMATICA 'GRO-LOW'	GRO-LOW SUMAC	2-3" SPR.	CONT.	
REVISIONS:						
2	7-2-21	TREE AND SHRUBS ADDED TO SNEW PROPERTY				
1	2/8/21	EXPAND PLAN TO SNEW PROPERTY				

WETLAND BUFFER PLANTING PLAN

PROJECT:  
**BEHRENS RESIDENCE**  
220 NOD HILL ROAD  
WILTON, CONNECTICUT

DATE:  
SEPTEMBER 4, 2020

LANDSCAPE ARCHITECTURE  
ENVIRONMENTAL LAND SOLUTIONS, LLC  
Landscape Architecture and Environmental Planning  
8 KNIGHT STREET, SUITE 203  
NORWALK, CONNECTICUT 06851  
Tel: (203) 855-7879 Fax: (203) 855-7836  
info@elslinc.net www.elslinc.net



DRAWING NO.:  
**WP.1**