

NONNATIVE INVASIVE SPECIES CONTROL NOTES:
SPECIES CONTROL NOTES:

1. REMOVAL OF NONNATIVE INVASIVE PLANTS TO BE ONGOING OVER A THREE (3) YEAR PERIOD WITHIN THE PROPOSED MITIGATION PLANTING AREA.
2. THE LANDSCAPE CONTRACTOR SHALL CONTACT THE PROJECT LANDSCAPE ARCHITECT WITH ANY QUESTIONS REGARDING THE CONTROL OR IDENTIFICATION OF INVASIVE NONNATIVE SPECIES.
3. THE LANDSCAPE CONTRACTOR SHALL FOLLOW THE METHODS AND RECOMMENDATIONS RECOMMENDED BY THE HERBICIDE MANUFACTURER AND COMPLY WITH ALL FEDERAL, STATE AND LOCAL LAWS. A PERMIT FROM DEEP IS REQUIRED FOR ANY PESTICIDE APPLICATION TO A BODY OF WATER.
4. ALL CUT OR PULLED INVASIVE NONNATIVE PLANT MATERIALS SHALL BE DISPOSED OF APPROPRIATELY AND COMPLY WITH THE 2004 DEEP / UCONN "GUIDELINES FOR DISPOSAL OF TERRESTRIAL INVASIVE PLANTS." ALL CUTTINGS SHALL BE COLLECTED AND PLACED ONSITE ON A PLASTIC TARP (OR ON AN ASPHALT PAVEMENT AREA) AND SUN DRIED UNTIL DEAD. AVOID CUTTINGS FROM BEING IN CONTACT WITH ANY SOIL. DEAD PLANTS SHALL BE BAGGED AND DEPOSITED IN AN INCINERATOR WASTE FACILITY (NOT A COMPOSTING FACILITY).
5. CONTROL NONNATIVE INVASIVE SPECIES AS FOLLOWS:
 - A. FOR ASIATIC BITTERSWEET, MULTIFLORA ROSE, WINEBERRY AND EUONYMUS:

STEP #1 (PRIOR TO HERBICIDE TREATMENT): PULL OUT OR CUT PLANT DOWN TO GRADE LEVEL DURING THE GROWING SEASON (LATE SUMMER OR EARLY FALL). REMOVE ALL PLANT MATERIALS IF POSSIBLE. DISPOSE OF CUT PLANT MATERIALS AS OUTLINED ABOVE.

STEP #2: IMMEDIATELY AFTER CUTTING, TREAT CUT STEMS WITH AN APPROPRIATE HERBICIDE (SUCH AS ROUND-UP) AT THE RATE AND METHODS RECOMMENDED BY THE MANUFACTURER. CARE SHALL BE TAKEN TO AVOID HERBICIDE CONTACT WITH NATIVE OR OTHER DESIRABLE VEGETATION.

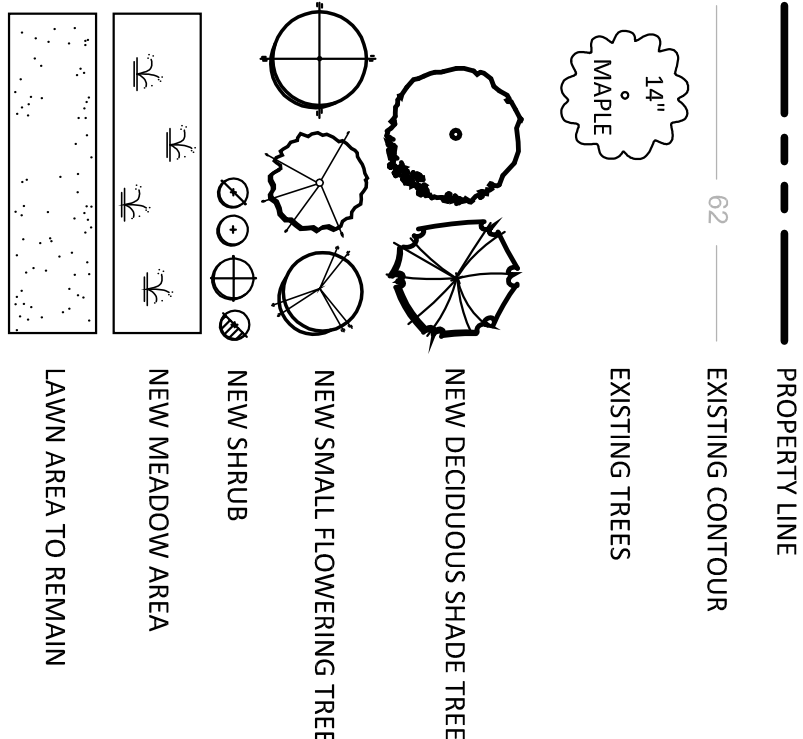
STEP #3: CHECK CONTROL AREA MONTHLY DURING THE GROWING SEASON FOR NEW GROWTH. SPOT TREAT NEW GROWTH WITH AN APPROPRIATE HERBICIDE AS NEEDED FOR CONTROL.
 - B. CARE SHALL BE TAKEN TO AVOID HERBICIDE CONTACT WITH NATIVE OR OTHER DESIRABLE VEGETATION. IN AREAS WHERE NATIVE PLANTS ARE GROWING NEAR OR AMONGST INVASIVE PLANTS, THE HERBICIDE SHALL NOT BE SPRAYED ONTO THE TARGET PLANTS. IN THESE AREAS THE HERBICIDE SHALL BE APPLIED WITH A BRUSH OR CLOTH.



- PLANTING AND SEEDING NOTES:**
1. EXACT LOCATION OF PROPOSED PLANTINGS AND SPECIES TYPES MAY VARY FROM THIS PLAN BASED ON SITE PLAN REVISIONS AND/OR ACTUAL FIELD CONDITIONS.
 2. SEED AREAS AT THE METHODS AND 125% THE APPLICATION RATE RECOMMENDED BY THE MANUFACTURER. THE SEED SHALL BE SPREAD ON THE PREPARED SOIL, LIGHTLY RAKED TO ESTABLISH GOOD SOIL CONTACT AFTER SOWING, AND MULCHED WITH A 2 INCH LOOSE LAYER OF LEAF OR PINE NEEDLE MULCH. SEED SHALL BE SPREAD BY HAND OR BY HYDROSEEDING ON SLOPES LESS THAN 10%.
 3. THE SEED SHALL BE SPREAD ON PREPARED SOIL, RAKED LIGHTLY TO ESTABLISH GOOD SOIL CONTACT, AND MULCHED WITH A 2 INCH LAYER OF LEAF OR PINE NEEDLE MULCH. SEED SHALL BE SPREAD BY HAND OR BY HYDROSEEDING ON SLOPES LESS THAN 10%.
 4. THE SEED SHALL BE SPREAD ON PREPARED SOIL, RAKED LIGHTLY TO ESTABLISH GOOD SOIL CONTACT, AND MULCHED WITH A 2 INCH LAYER OF LEAF OR PINE NEEDLE MULCH. SEED SHALL BE SPREAD BY HAND OR BY HYDROSEEDING ON SLOPES LESS THAN 10%.
 5. THE SEED SHALL BE SPREAD ON PREPARED SOIL, RAKED LIGHTLY TO ESTABLISH GOOD SOIL CONTACT, AND MULCHED WITH A 2 INCH LAYER OF LEAF OR PINE NEEDLE MULCH. SEED SHALL BE SPREAD BY HAND OR BY HYDROSEEDING ON SLOPES LESS THAN 10%.
 6. THE SEED SHALL BE SPREAD ON PREPARED SOIL, RAKED LIGHTLY TO ESTABLISH GOOD SOIL CONTACT, AND MULCHED WITH A 2 INCH LAYER OF LEAF OR PINE NEEDLE MULCH. SEED SHALL BE SPREAD BY HAND OR BY HYDROSEEDING ON SLOPES LESS THAN 10%.
 7. THE SEED SHALL BE SPREAD ON PREPARED SOIL, RAKED LIGHTLY TO ESTABLISH GOOD SOIL CONTACT, AND MULCHED WITH A 2 INCH LAYER OF LEAF OR PINE NEEDLE MULCH. SEED SHALL BE SPREAD BY HAND OR BY HYDROSEEDING ON SLOPES LESS THAN 10%.
 8. THE SEED SHALL BE SPREAD ON PREPARED SOIL, RAKED LIGHTLY TO ESTABLISH GOOD SOIL CONTACT, AND MULCHED WITH A 2 INCH LAYER OF LEAF OR PINE NEEDLE MULCH. SEED SHALL BE SPREAD BY HAND OR BY HYDROSEEDING ON SLOPES LESS THAN 10%.
 9. THE SEED SHALL BE SPREAD ON PREPARED SOIL, RAKED LIGHTLY TO ESTABLISH GOOD SOIL CONTACT, AND MULCHED WITH A 2 INCH LAYER OF LEAF OR PINE NEEDLE MULCH. SEED SHALL BE SPREAD BY HAND OR BY HYDROSEEDING ON SLOPES LESS THAN 10%.
 10. THE SEED SHALL BE SPREAD ON PREPARED SOIL, RAKED LIGHTLY TO ESTABLISH GOOD SOIL CONTACT, AND MULCHED WITH A 2 INCH LAYER OF LEAF OR PINE NEEDLE MULCH. SEED SHALL BE SPREAD BY HAND OR BY HYDROSEEDING ON SLOPES LESS THAN 10%.
 11. THE SEED SHALL BE SPREAD ON PREPARED SOIL, RAKED LIGHTLY TO ESTABLISH GOOD SOIL CONTACT, AND MULCHED WITH A 2 INCH LAYER OF LEAF OR PINE NEEDLE MULCH. SEED SHALL BE SPREAD BY HAND OR BY HYDROSEEDING ON SLOPES LESS THAN 10%.
 12. THE SEED SHALL BE SPREAD ON PREPARED SOIL, RAKED LIGHTLY TO ESTABLISH GOOD SOIL CONTACT, AND MULCHED WITH A 2 INCH LAYER OF LEAF OR PINE NEEDLE MULCH. SEED SHALL BE SPREAD BY HAND OR BY HYDROSEEDING ON SLOPES LESS THAN 10%.
 13. THE SEED SHALL BE SPREAD ON PREPARED SOIL, RAKED LIGHTLY TO ESTABLISH GOOD SOIL CONTACT, AND MULCHED WITH A 2 INCH LAYER OF LEAF OR PINE NEEDLE MULCH. SEED SHALL BE SPREAD BY HAND OR BY HYDROSEEDING ON SLOPES LESS THAN 10%.

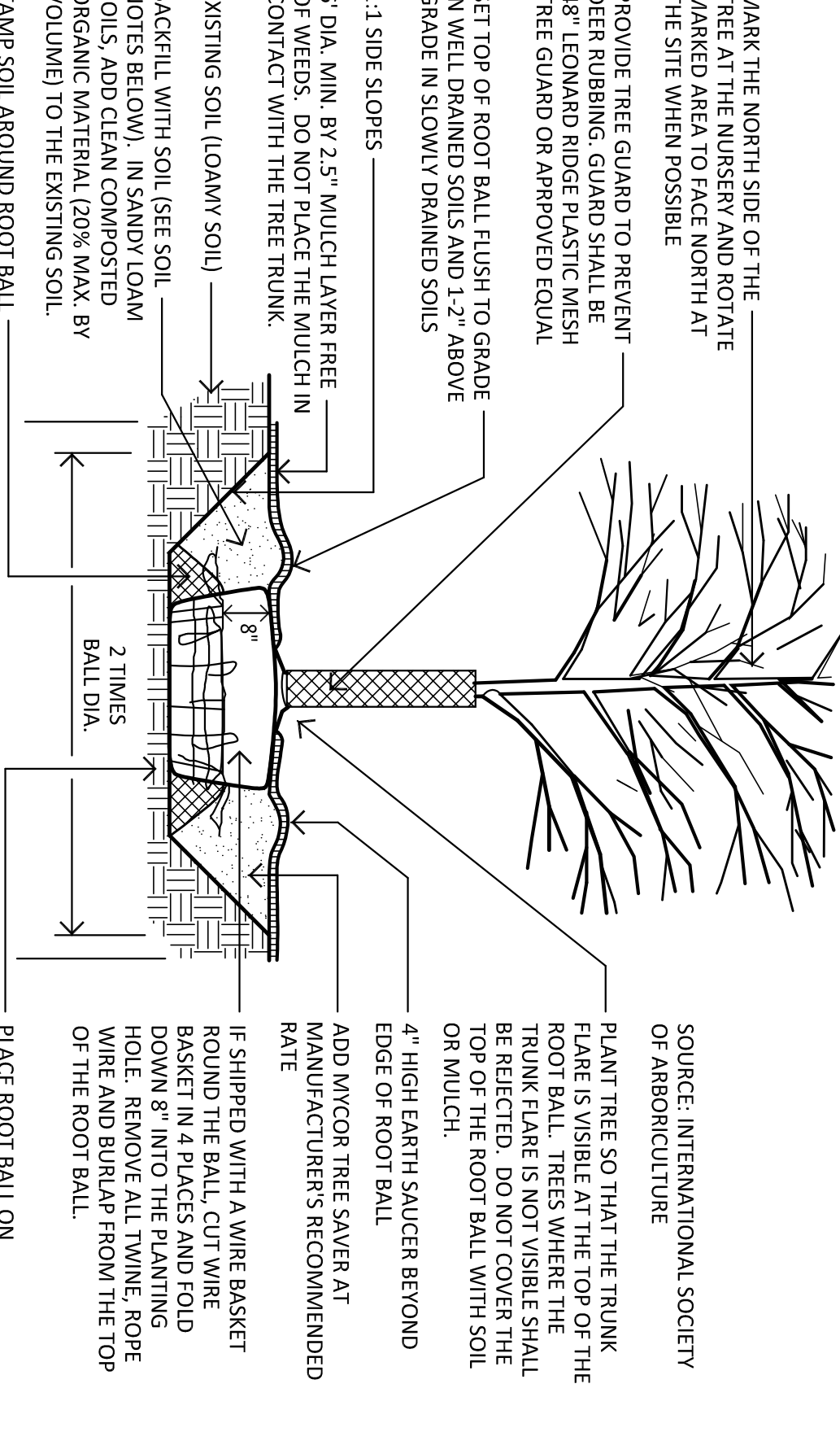
1. IF SPECIFIED SEEDING CAN NOT OCCUR DUE TO SEASONAL AND WEATHER CONDITIONS, TEMPORARY SEED DISTURBED UPLAND AREAS WITH A MIXTURE OF ANNUAL RYE AT 20 LBS./ACRE, PERENNIAL RYE AT 20 LBS./ACRE, AND REDTOP AT 2 LBS./ACRE AND DISTURBED NON-GROWING SEASON IN ACCORDANCE WITH THE "CONNECTICUT GUIDELINES FOR SOIL EROSION AND SEDIMENT CONTROL (2002)".
2. THE SEED SHALL BE SPREAD ON PREPARED SOIL, RAKED LIGHTLY TO ESTABLISH GOOD SOIL CONTACT, AND MULCHED WITH A 2 INCH LAYER OF LEAF OR PINE NEEDLE MULCH. SEED SHALL BE SPREAD BY HAND OR BY HYDROSEEDING ON SLOPES LESS THAN 10%.
3. THE SEED SHALL BE SPREAD ON PREPARED SOIL, RAKED LIGHTLY TO ESTABLISH GOOD SOIL CONTACT, AND MULCHED WITH A 2 INCH LAYER OF LEAF OR PINE NEEDLE MULCH. SEED SHALL BE SPREAD BY HAND OR BY HYDROSEEDING ON SLOPES LESS THAN 10%.
4. THE SEED SHALL BE SPREAD ON PREPARED SOIL, RAKED LIGHTLY TO ESTABLISH GOOD SOIL CONTACT, AND MULCHED WITH A 2 INCH LAYER OF LEAF OR PINE NEEDLE MULCH. SEED SHALL BE SPREAD BY HAND OR BY HYDROSEEDING ON SLOPES LESS THAN 10%.
5. THE SEED SHALL BE SPREAD ON PREPARED SOIL, RAKED LIGHTLY TO ESTABLISH GOOD SOIL CONTACT, AND MULCHED WITH A 2 INCH LAYER OF LEAF OR PINE NEEDLE MULCH. SEED SHALL BE SPREAD BY HAND OR BY HYDROSEEDING ON SLOPES LESS THAN 10%.
6. THE SEED SHALL BE SPREAD ON PREPARED SOIL, RAKED LIGHTLY TO ESTABLISH GOOD SOIL CONTACT, AND MULCHED WITH A 2 INCH LAYER OF LEAF OR PINE NEEDLE MULCH. SEED SHALL BE SPREAD BY HAND OR BY HYDROSEEDING ON SLOPES LESS THAN 10%.
7. THE SEED SHALL BE SPREAD ON PREPARED SOIL, RAKED LIGHTLY TO ESTABLISH GOOD SOIL CONTACT, AND MULCHED WITH A 2 INCH LAYER OF LEAF OR PINE NEEDLE MULCH. SEED SHALL BE SPREAD BY HAND OR BY HYDROSEEDING ON SLOPES LESS THAN 10%.
8. THE SEED SHALL BE SPREAD ON PREPARED SOIL, RAKED LIGHTLY TO ESTABLISH GOOD SOIL CONTACT, AND MULCHED WITH A 2 INCH LAYER OF LEAF OR PINE NEEDLE MULCH. SEED SHALL BE SPREAD BY HAND OR BY HYDROSEEDING ON SLOPES LESS THAN 10%.
9. THE SEED SHALL BE SPREAD ON PREPARED SOIL, RAKED LIGHTLY TO ESTABLISH GOOD SOIL CONTACT, AND MULCHED WITH A 2 INCH LAYER OF LEAF OR PINE NEEDLE MULCH. SEED SHALL BE SPREAD BY HAND OR BY HYDROSEEDING ON SLOPES LESS THAN 10%.
10. THE SEED SHALL BE SPREAD ON PREPARED SOIL, RAKED LIGHTLY TO ESTABLISH GOOD SOIL CONTACT, AND MULCHED WITH A 2 INCH LAYER OF LEAF OR PINE NEEDLE MULCH. SEED SHALL BE SPREAD BY HAND OR BY HYDROSEEDING ON SLOPES LESS THAN 10%.
11. THE SEED SHALL BE SPREAD ON PREPARED SOIL, RAKED LIGHTLY TO ESTABLISH GOOD SOIL CONTACT, AND MULCHED WITH A 2 INCH LAYER OF LEAF OR PINE NEEDLE MULCH. SEED SHALL BE SPREAD BY HAND OR BY HYDROSEEDING ON SLOPES LESS THAN 10%.
12. THE SEED SHALL BE SPREAD ON PREPARED SOIL, RAKED LIGHTLY TO ESTABLISH GOOD SOIL CONTACT, AND MULCHED WITH A 2 INCH LAYER OF LEAF OR PINE NEEDLE MULCH. SEED SHALL BE SPREAD BY HAND OR BY HYDROSEEDING ON SLOPES LESS THAN 10%.
13. THE SEED SHALL BE SPREAD ON PREPARED SOIL, RAKED LIGHTLY TO ESTABLISH GOOD SOIL CONTACT, AND MULCHED WITH A 2 INCH LAYER OF LEAF OR PINE NEEDLE MULCH. SEED SHALL BE SPREAD BY HAND OR BY HYDROSEEDING ON SLOPES LESS THAN 10%.

LEGEND



GENERAL NOTES:

1. EXISTING SITE INFORMATION TAKEN FROM A DIGITAL AUTOCAD SURVEY SUPPLIED BY RYAN AND FAULDS SURVEYORS. SEE THIS PLAN FOR ADDITIONAL INFORMATION.
2. CONTRACT "CALL BEFORE YOU DIG" AT 1-800-922-4455 TO HAVE UNDERGROUND UTILITY LINES MARKED BY THEM PRIOR TO START OF ANY EXCAVATION WORK.
3. EXACT LOCATION OF PROPOSED PLANTINGS AND SPECIES TYPES MAY VARY FROM THIS PLAN BASED ON SITE PLAN REVISIONS AND/OR ACTUAL FIELD CONDITIONS.
4. PLANTING METHODS SHALL BE IN ACCORDANCE WITH THE "AMERICAN STANDARDS FOR NURSERY STOCK", LATEST EDITION, AS PUBLISHED BY THE AMERICAN NURSERY & LANDSCAPE ASSOCIATION.
5. THE CONTRACTOR SHALL VERIFY WITH THE PROJECT ENGINEER THAT THE NEW PLANTINGS DO NOT INTERFERE WITH EXISTING AND/OR PROPOSED UTILITIES, SIGHT LINES, AND/OR STRUCTURES.
6. IN THE EVENT OF A DISCREPANCY BETWEEN THE QUANTITIES OF PLANTS IN THE "PLANT LIST" AND THE ACTUAL QUANTITIES SHOWN ON THE PLAN, THE PLAN SHALL GOVERN.
7. THIS PLAN FOR PLANTING PURPOSES ONLY. SEE PLANS BY OTHERS FOR ADDITIONAL INFORMATION.



TREE PLANTING DETAIL			
QTY	KEY	BOTANICAL NAME	COMMON NAME
4	AR	ACER RUBRUM	RED MAPLE
4	AS	ACER SACCHARINUM	SUGAR MAPLE
3	CO	CORYLUS OVATA	HICKORY
3	QB	QUERCUS BICOLOR	SWAMP WHITE OAK
5	AC	AMELANCHIER CANADENSIS	SHAD
3	WK	CRATAEGUS WINTER KING	WINTER KING HAWTHORN
10	IG	ILEX GLABRA	INGEBERRY
10	GL	RHUS KROMANTICA GRO-LOW	GRO-LOW SUMAC
PLANT LIST			
QTY	KEY	BOTANICAL NAME	COMMON NAME
4	AR	ACER RUBRUM	RED MAPLE
4	AS	ACER SACCHARINUM	SUGAR MAPLE
3	CO	CORYLUS OVATA	HICKORY
3	QB	QUERCUS BICOLOR	SWAMP WHITE OAK
5	AC	AMELANCHIER CANADENSIS	SHAD
3	WK	CRATAEGUS WINTER KING	WINTER KING HAWTHORN
10	IG	ILEX GLABRA	INGEBERRY
10	GL	RHUS KROMANTICA GRO-LOW	GRO-LOW SUMAC
WETLAND BUFFER PLANTING PLAN			
QTY	KEY	BOTANICAL NAME	COMMON NAME
4	AR	ACER RUBRUM	RED MAPLE
4	AS	ACER SACCHARINUM	SUGAR MAPLE
3	CO	CORYLUS OVATA	HICKORY
3	QB	QUERCUS BICOLOR	SWAMP WHITE OAK
5	AC	AMELANCHIER CANADENSIS	SHAD
3	WK	CRATAEGUS WINTER KING	WINTER KING HAWTHORN
10	IG	ILEX GLABRA	INGEBERRY
10	GL	RHUS KROMANTICA GRO-LOW	GRO-LOW SUMAC
EXPAND PLAN TO SNEW PROPERTY			
QTY	KEY	BOTANICAL NAME	COMMON NAME
4	AR	ACER RUBRUM	RED MAPLE
4	AS	ACER SACCHARINUM	SUGAR MAPLE
3	CO	CORYLUS OVATA	HICKORY
3	QB	QUERCUS BICOLOR	SWAMP WHITE OAK
5	AC	AMELANCHIER CANADENSIS	SHAD
3	WK	CRATAEGUS WINTER KING	WINTER KING HAWTHORN
10	IG	ILEX GLABRA	INGEBERRY
10	GL	RHUS KROMANTICA GRO-LOW	GRO-LOW SUMAC