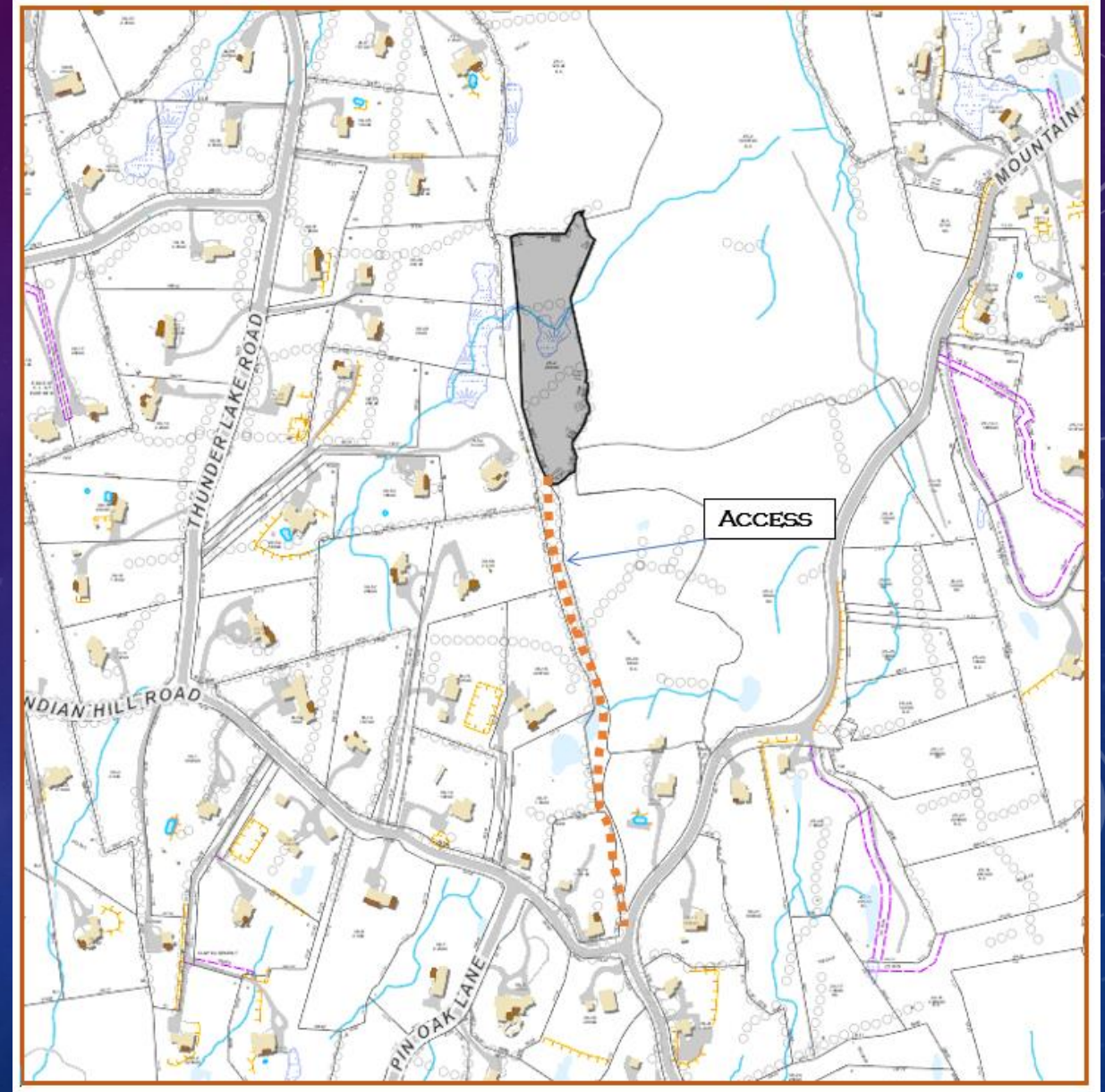
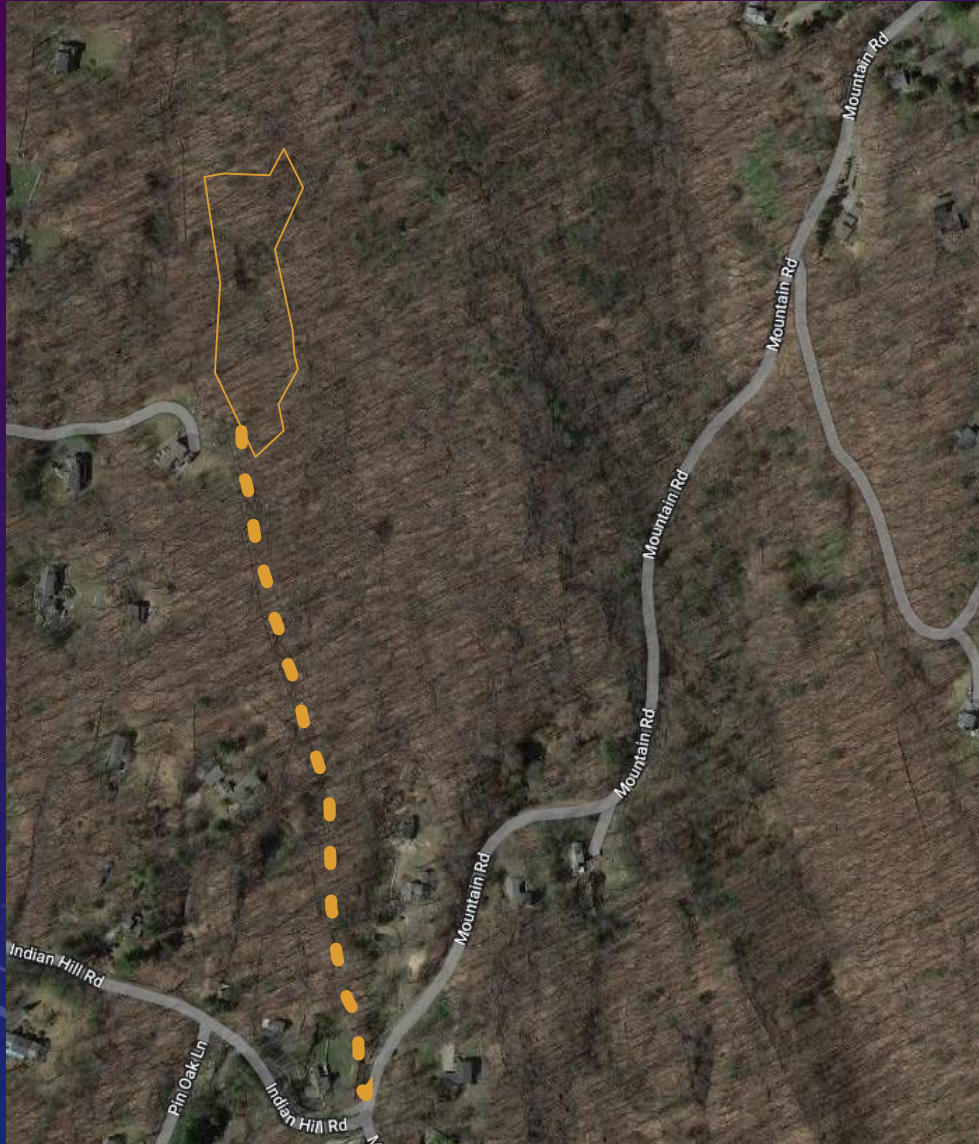




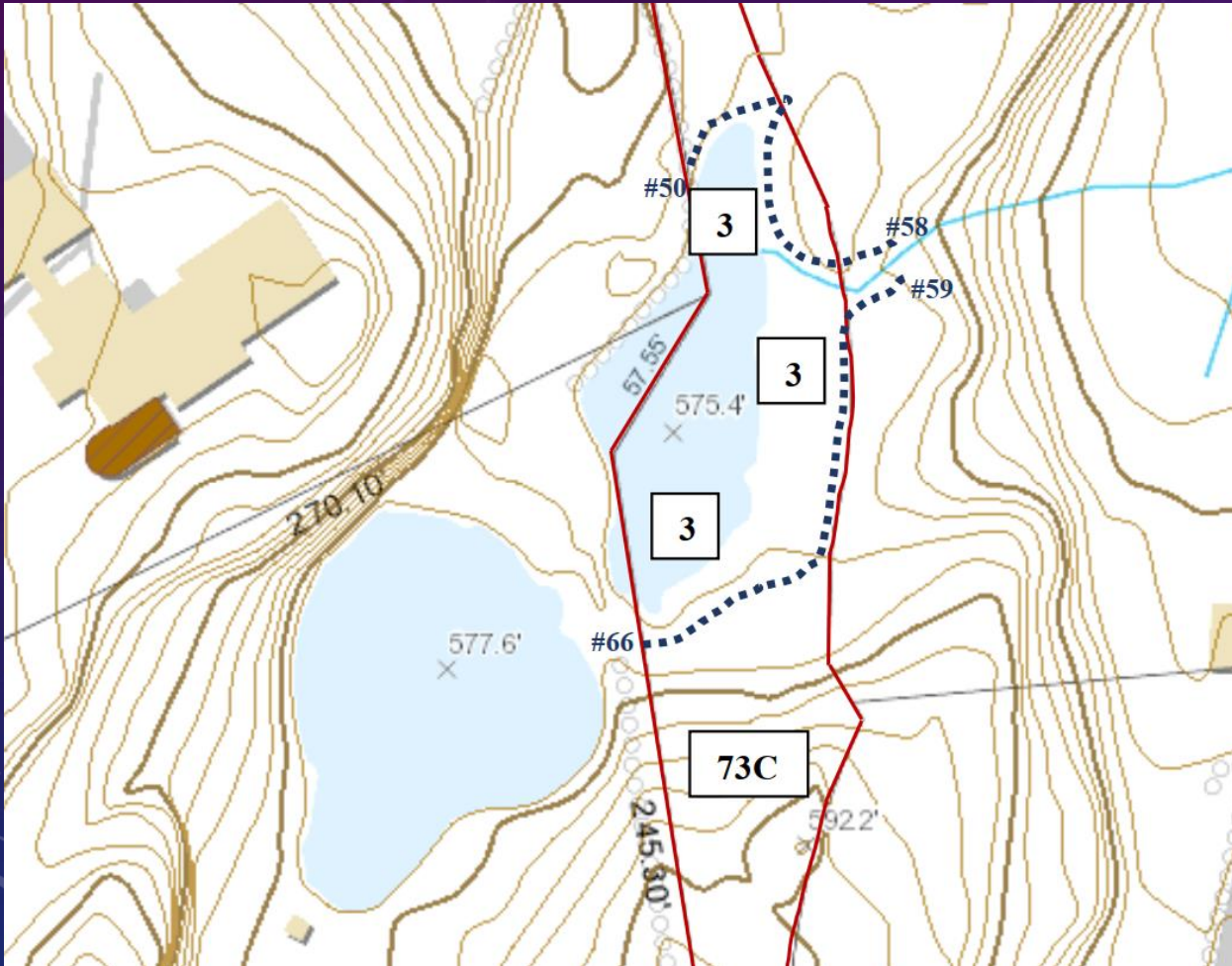
0 MOUNTAIN RD WILTON, CT SINGLE-FAMILY DEVELOPMENT

ALEKSANDRA MOCH, ENVIRONMENTAL CONSULTANT

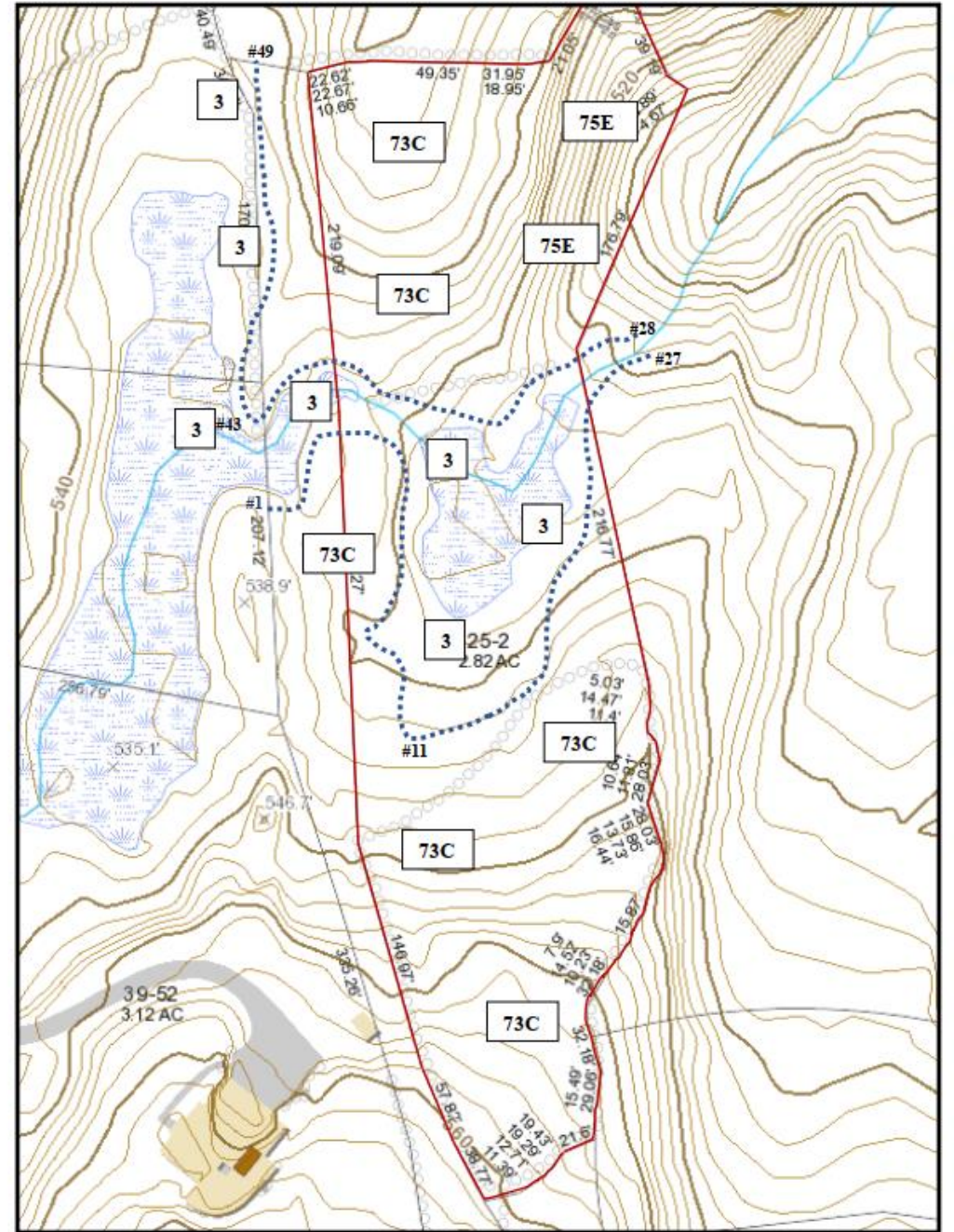
THE SITE



VERNAL POOL



A photograph of a forest floor. The ground is covered in a thick layer of green moss and various ferns. A large, fallen log lies horizontally across the middle of the frame, also covered in moss. In the background, several tall, thin tree trunks are visible, suggesting a dense forest. The lighting is soft and diffused, typical of a forest interior.



STATE SPECIES OF SPECIAL CONCERN

VERNAL POOL INDICATORS



Eastern box turtle (*Terrapene carolina carolina*)



Ground beetle (*Badister transversus*)



Wood frog



Spotted salamander

INDIAN HILL 38-16

DRIVEWAY DRAIN 8
GRATE 578.0
INV. 576.8

POROUS ASPHALT BEGINS AT 578.0 ELEVATION

WETLANDS AREA
6,756 SF
0.15 AC
IN R.O.W.

4' WIDE BIO RETENTION SWALE

DOUBLE SILT FENCE AND HAYBALES

7' X 1.5' PRECAST BOX CULVERTS (TYP.)

POROUS ASPHALT ENDS AT DR

100' WETLANDS SETBACK

POSTS FOR GUIDERAIL PLACED TO COINCIDE WITH BOX CULVERT UNITS

WF 59

WF 52

WF 55

WF 56

WF 63

WF 66

WF 60

WF 61

WF 62

WF 64

WF 65

WF 67

WF 68

WF 69

WF 70

WF 71

WF 72

WF 73

WF 74

WF 75

WF 76

WF 77

WF 78

WF 79

WF 80

WF 81

WF 82

WF 83

WF 84

WF 85

WF 86

WF 87

WF 88

WF 89

WF 90

WF 91

WF 92

WF 93

WF 94

WF 95

WF 96

WF 97

WF 98

WF 99

WF 100

WF 101

WF 102

WF 103

WF 104

WF 105

WF 106

WF 107

WF 108

WF 109

WF 110

WF 111

WF 112

WF 113

WF 114

WF 115

WF 116

WF 117

WF 118

WF 119

WF 120

WF 121

WF 122

WF 123

WF 124

WF 125

WF 126

WF 127

WF 128

WF 129

WF 130

WF 131

WF 132

WF 133

WF 134

WF 135

WF 136

WF 137

WF 138

WF 139

WF 140

WF 141

WF 142

WF 143

WF 144

WF 145

WF 146

WF 147

WF 148

WF 149

WF 150

WF 151

WF 152

WF 153

WF 154

WF 155

WF 156

WF 157

WF 158

WF 159

WF 160

WF 161

WF 162

WF 163

WF 164

WF 165

WF 166

WF 167

WF 168

WF 169

WF 170

WF 171

WF 172

WF 173

WF 174

WF 175

WF 176

WF 177

WF 178

WF 179

WF 180

WF 181

WF 182

WF 183

WF 184

WF 185

WF 186

WF 187

WF 188

WF 189

WF 190

WF 191

WF 192

WF 193

WF 194

WF 195

WF 196

WF 197

WF 198

WF 199

WF 200

WF 201

WF 202

WF 203

WF 204

WF 205

WF 206

WF 207

WF 208

WF 209

WF 210

WF 211

WF 212

WF 213

WF 214

WF 215

WF 216

WF 217

WF 218

WF 219

WF 220

WF 221

WF 222

WF 223

WF 224

WF 225

WF 226

WF 227

WF 228

WF 229

WF 230

WF 231

WF 232

WF 233

WF 234

WF 235

WF 236

WF 237

WF 238

WF 239

WF 240

WF 241

WF 242

WF 243

WF 244

WF 245

WF 246

WF 247

WF 248

WF 249

WF 250

WF 251

WF 252

WF 253

WF 254

WF 255

WF 256

WF 257

WF 258

WF 259

WF 260

WF 261

WF 262

WF 263

WF 264

WF 265

WF 266

WF 267

WF 268

WF 269

WF 270

WF 271

WF 272

WF 273

WF 274

WF 275

WF 276

WF 277

WF 278

WF 279

WF 280

WF 281

WF 282

WF 283

WF 284

WF 285

WF 286

WF 287

WF 288

WF 289

WF 290

WF 291

WF 292

WF 293

WF 294

WF 295

WF 296

WF 297

WF 298

WF 299

WF 300

WF 301

WF 302

WF 303

WF 304

WF 305

WF 306

WF 307

WF 308

WF 309

WF 310

WF 311

WF 312

WF 313

WF 314

WF 315

WF 316

WF 317

WF 318

WF 319

WF 320

WF 321

WF 322

WF 323

WF 324

WF 325

WF 326

WF 327

WF 328

WF 329

WF 330

WF 331

WF 332

WF 333

WF 334

WF 335

WF 336

WF 337

WF 338

WF 339

WF 340

WF 341

WF 342

WF 343

WF 344

WF 345

WF 346

WF 347

WF 348

WF 349

WF 350

WF 351

WF 352

WF 353

WF 354

WF 355

WF 356

WF 357

WF 358

WF 359

WF 360

WF 361

WF 362

WF 363

WF 364

WF 365

WF 366

WF 367

WF 368

WF 369

WF 370

WF 371

WF 372

WF 373

WF 374

WF 375

WF 376

WF 377

WF 378

WF 379

WF 380

WF 381

WF 382

WF 383

WF 384

WF 385

WF 386

WF 387

WF 388

WF 389

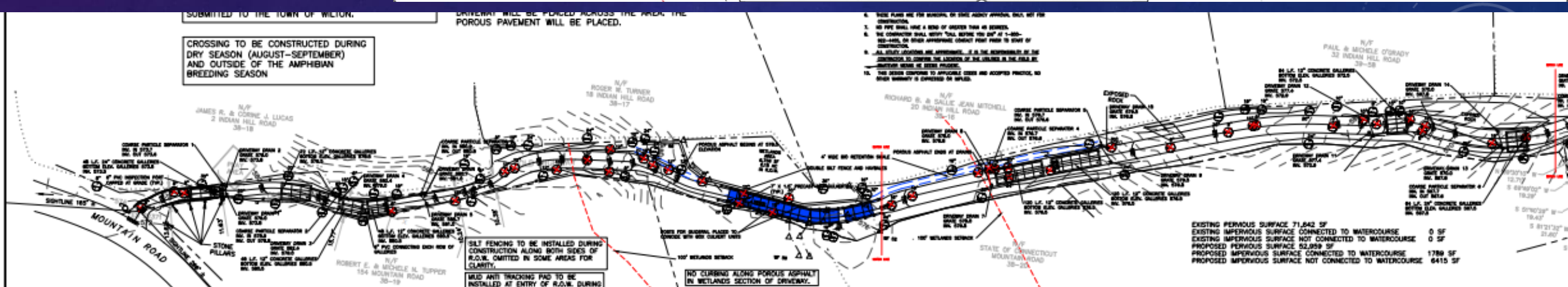
WF 390

WF 391

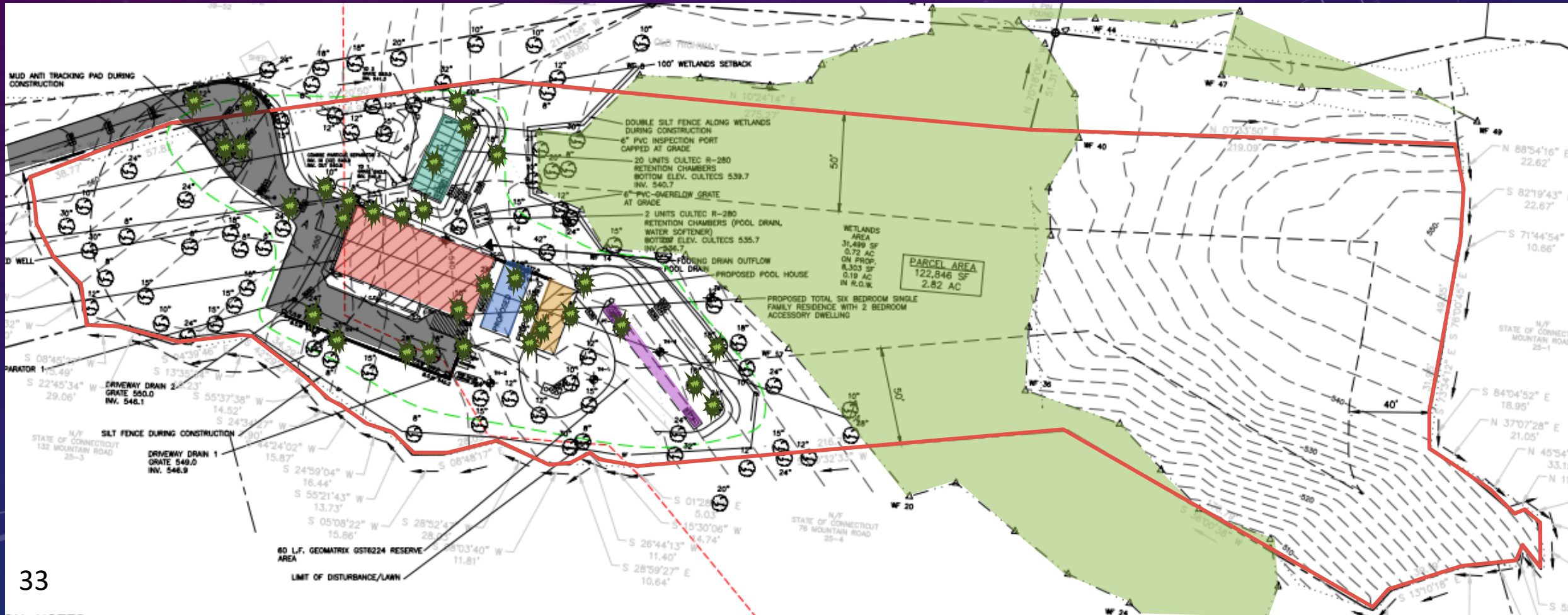
WF 392

WF 393

WF 39

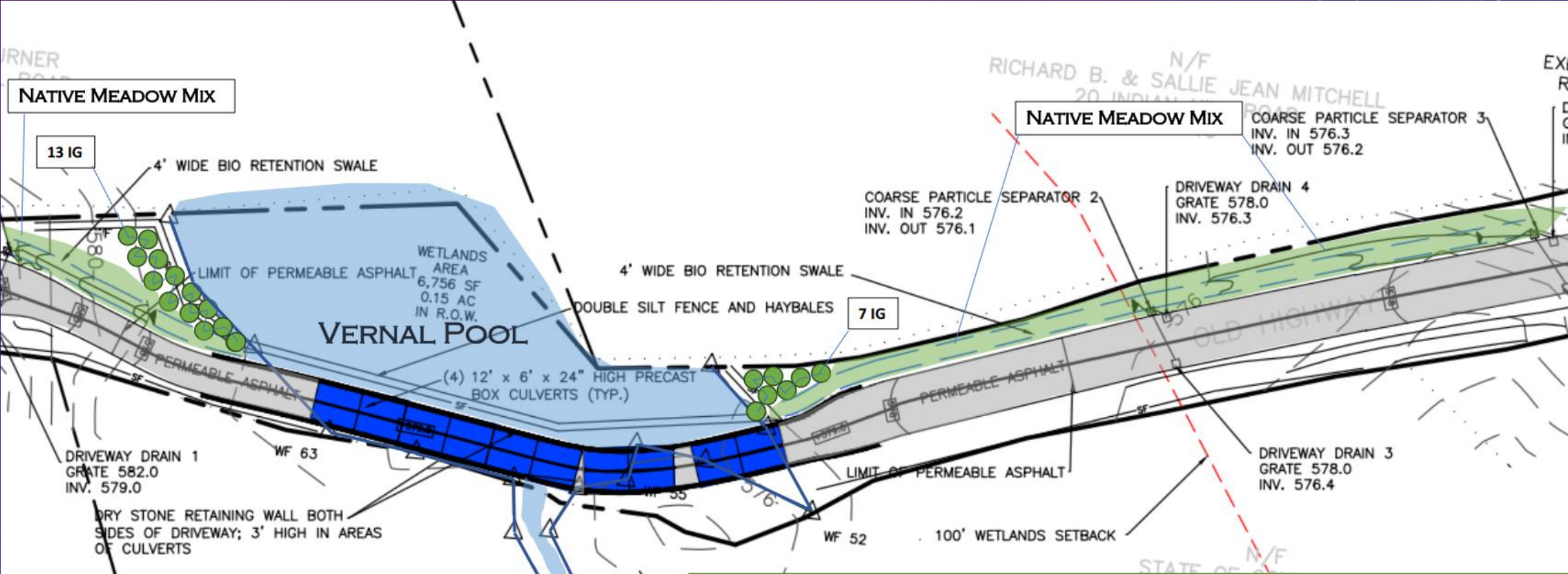


PROPOSED SITE DEVELOPMENT



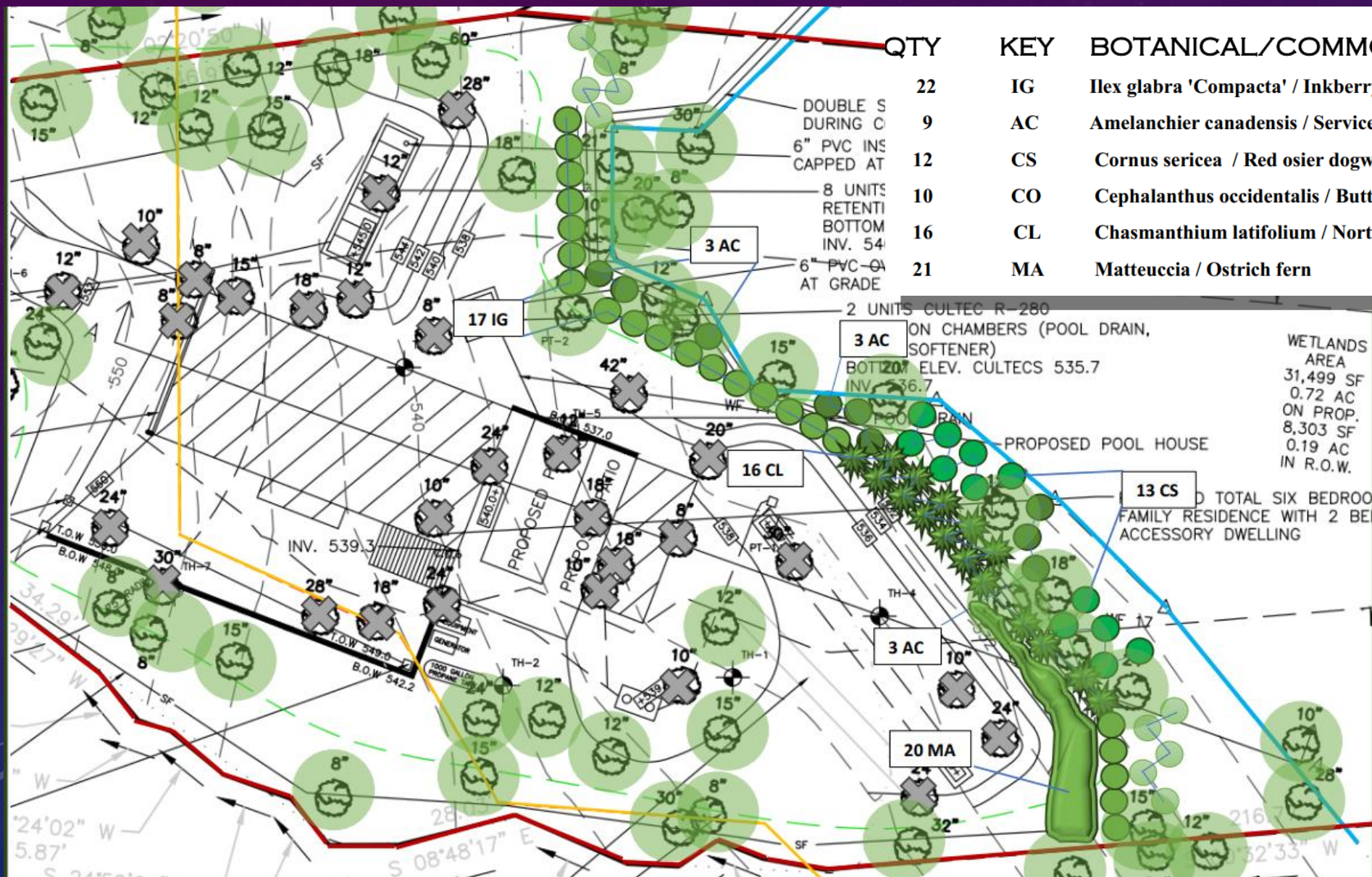


MITIGATION PLAN - ACCESS



PLANTING SCHEDULE				
QTY	KEY	BOTANICAL/COMMON NAME	SIZE	ROOT
20	IG	Ilex glabra/ Inkberry	2'-3'	Cont.

MITIGATION PLAN – PROPERTY



QTY	KEY	BOTANICAL/COMMON NAME	SIZE	ROOT
22	IG	Ilex glabra 'Compacta' / Inkberry	#5	Cont.
9	AC	Amelanchier canadensis / Serviceberry	#5	Cont.
12	CS	Cornus sericea / Red osier dogwood	#5	Cont.
10	CO	Cephalanthus occidentalis / Buttonbush	#5	Cont.
16	CL	Chasmanthium latifolium / Northern sea oats	#3	Cont.
21	MA	Matteuccia / Ostrich fern	#3	Cont.

WETLANDS
AREA
31,499 SF
0.72 AC
ON PROP.
8,303 SF
0.19 AC
IN R.O.W.

PROPOSED POOL HOUSE
TOTAL SIX BEDROOM
FAMILY RESIDENCE WITH 2 BED
ACCESSORY DWELLING