



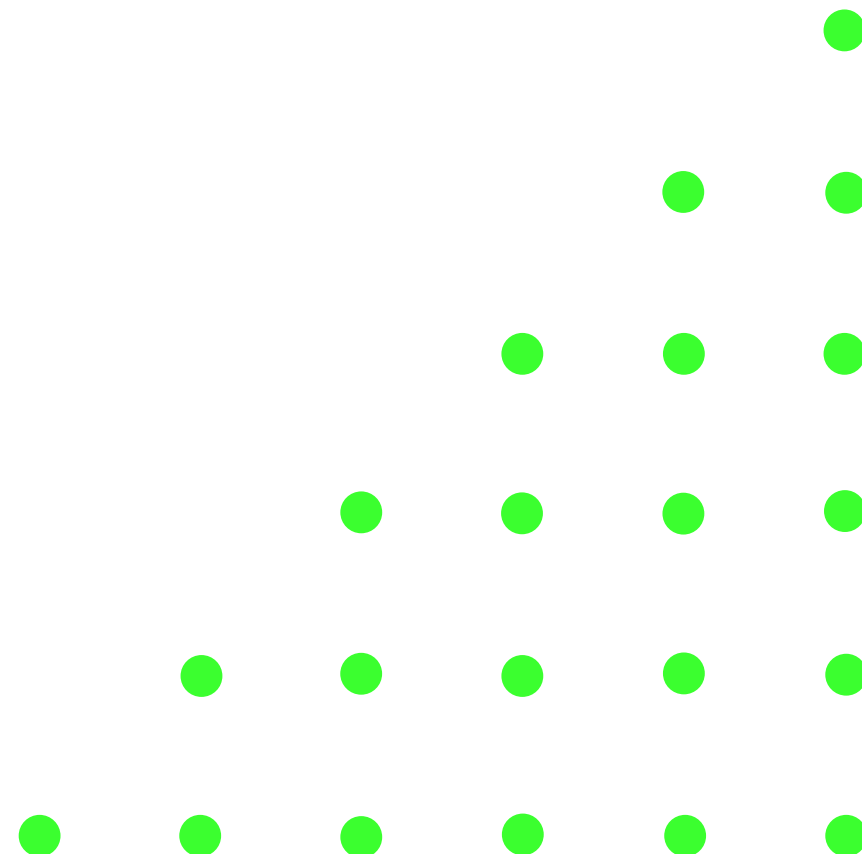
Project Number: 11142

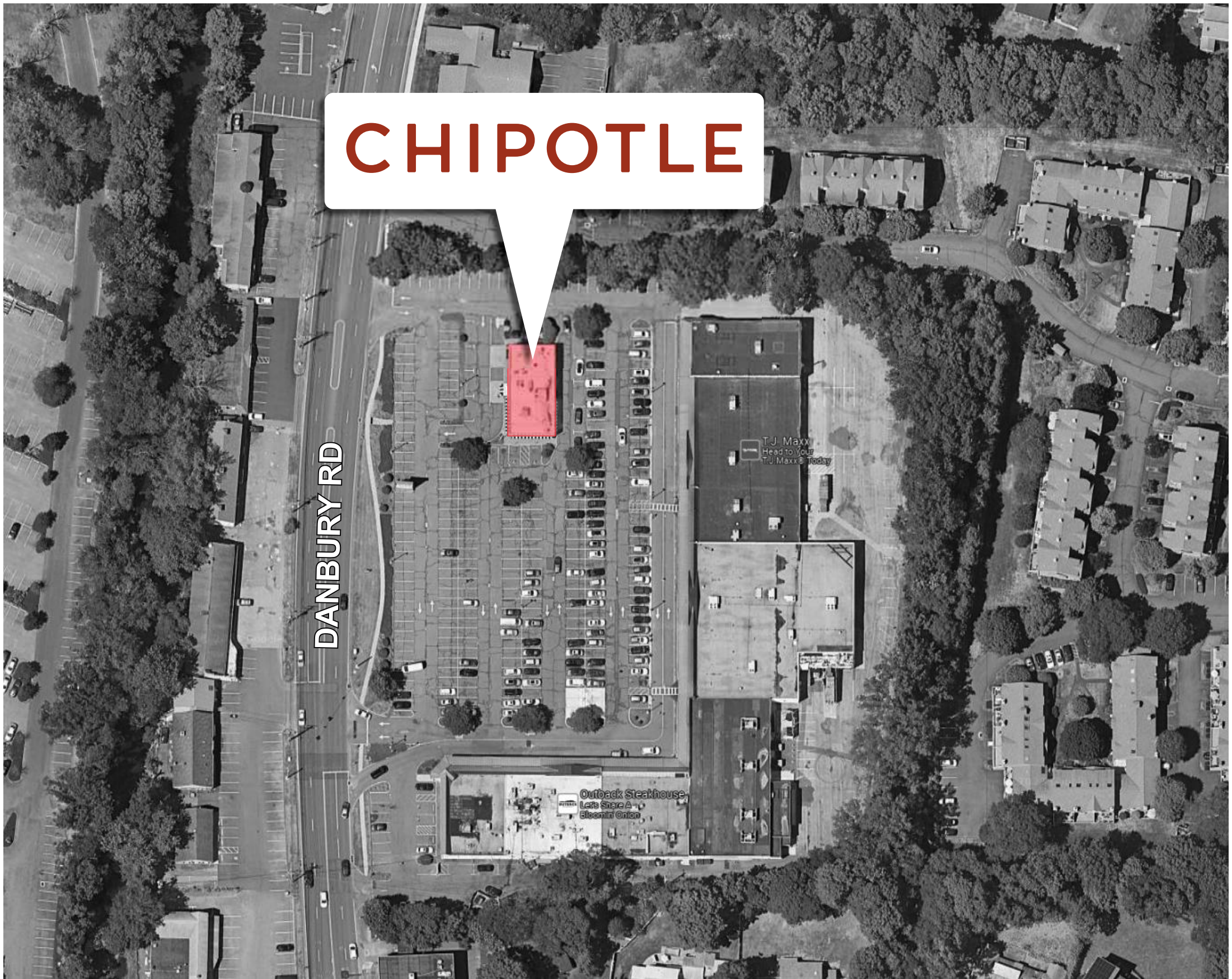
STORE #5197

WILTON-NORWALK

14 DANBURY RD

WILTON, CT 06897





100 Davids Drive, Hauppauge, NY 11788
P631.737.3140 F631.760.1795
INTERNAL USE ONLY: 11142_03.27.24_04.03_LS

CHIPOTLE

☐ Approved

☐ Rejected

☐ Approved with Corrections

☐ Revise and Resubmit

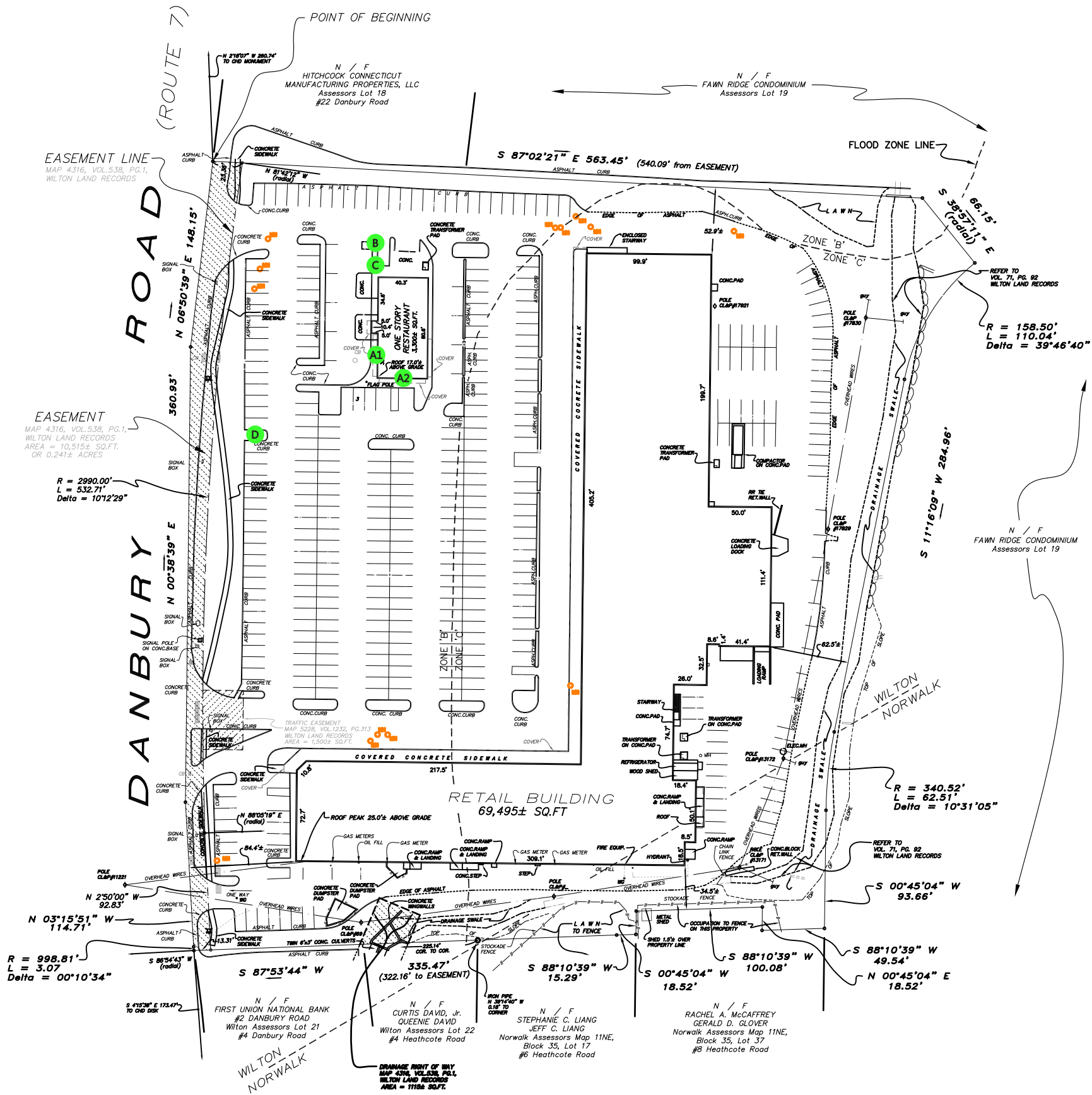
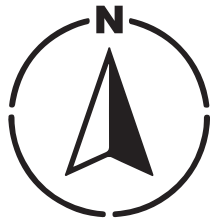
Signature: _____

Date: _____

STORE #5197
14 DANBURY RD
WILTON, CT 06897

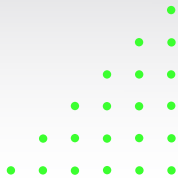
This artwork is the property of Broadway National. Unauthorized use, publication or distribution is prohibited.



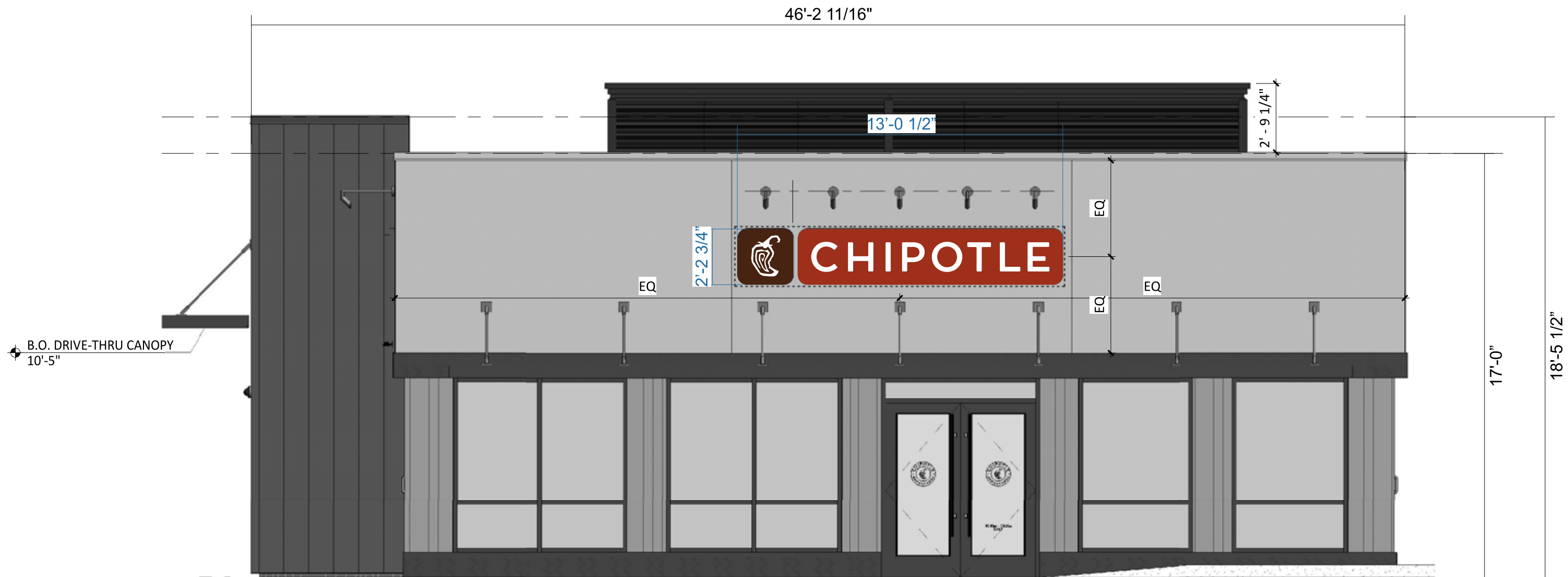


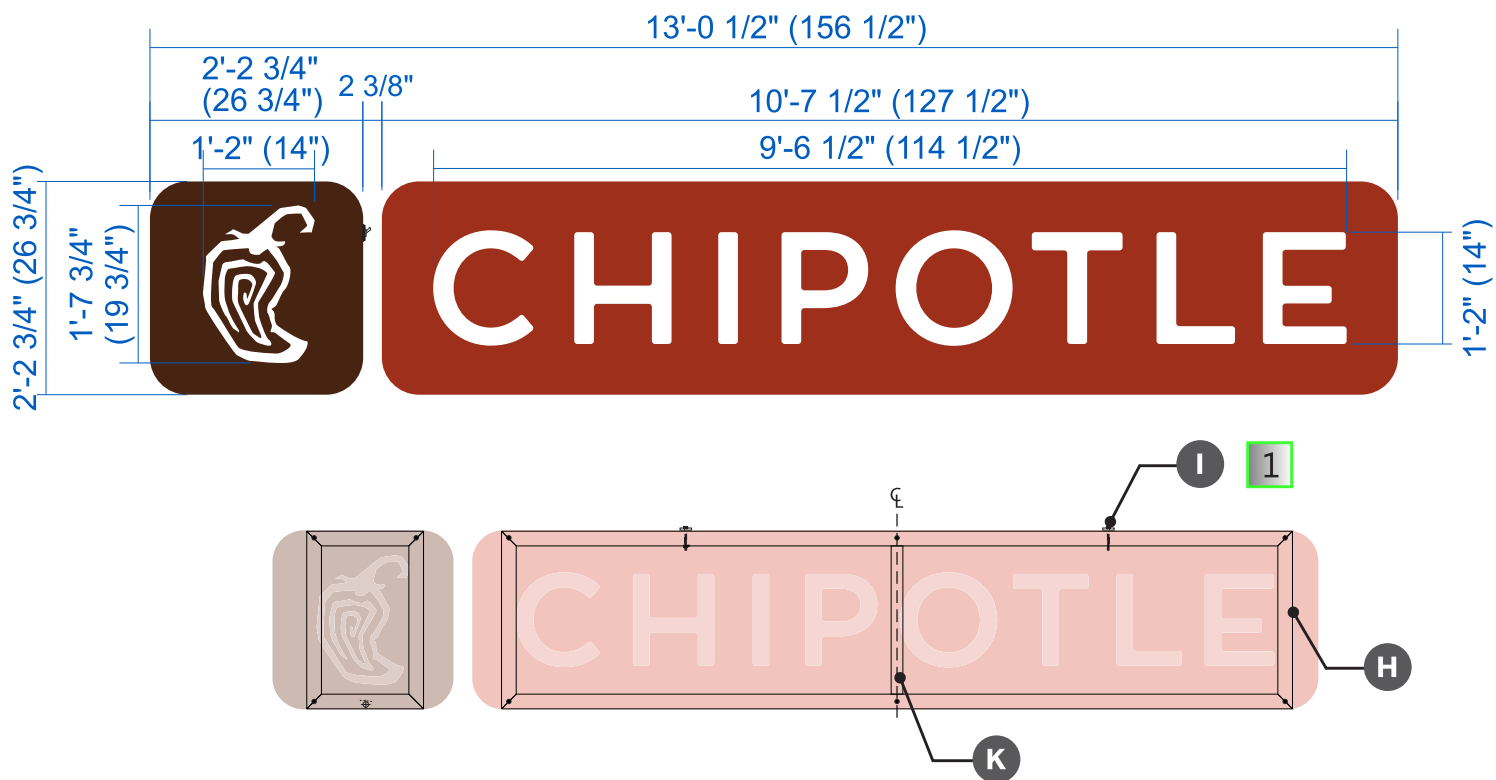
SIGN KEY

- A1 A-3 NON-ILLUMINATED WALL SIGN
- A2 A-3 NON-ILLUMINATED WALL SIGN
- B DIGITAL PICK-UP SIGN
- C CLEARANCE BAR
- D PYLON SIGN

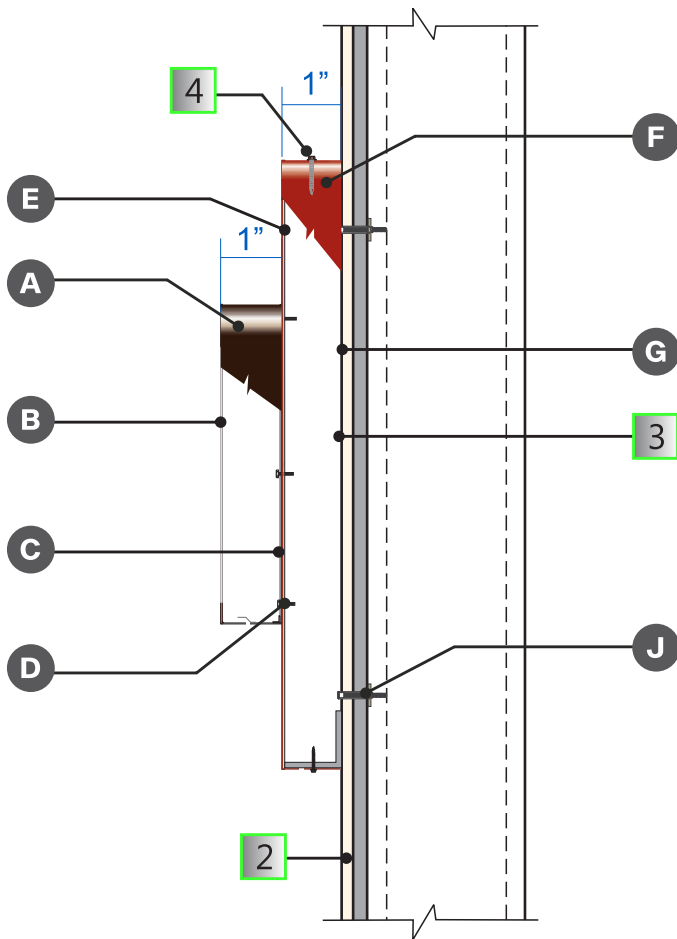








SECTION DETAIL
NOT TO SCALE



SPECIFICATIONS

CHANNEL LETTERS "CHIPOTLE" & PEPPER LOGO

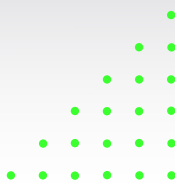
- A** .063" aluminum returns, 1"D ptm PMS 4625 C Adobo Brown w/ weep holes
- B** .080" aluminum face welded to returns painted white
- C** .125" aluminum backs
- D** Channel letters mounted flush to face of cabinets w/ #10 "blunt" ended screws
- G** .125" aluminum backs
- H** 1/8" aluminum frame
- I** 3/8" steel nut w/ lift points
- J** Mounted using 3/8" Liberty toggle bolts or 3/8" SS Bolts w/ Toggle Snaptoggle anchors into 3/4" plywood backer provided by GC. (4) Logo Sign, (2) Top & bottom, (8) Chipotle sign, (4) Top & bottom evenly spaced w/ a 12" max, side clearance
- K** 1" x 2" x 1/8" aluminum rectangular tube brace

BROWN & RED REVERSE PAN CABINETS

- E** .125" aluminum face. Attachment to frame via Versilok adhesive. Faces overhang ends of frame
- F** 1" x .090" aluminum returns welded to face. Returns to have weep holes

NOTES:

- 1** LIFT POINTS PROVIDED FOR ALL SIGNS.
- 2** 3/4" FIRE TREATED PLYWOOD BLOCKING MUST BE IN PLACE BY OTHERS ON EXTERIOR SIDE OF FACADE FRAMING OR SUFFICIENTLY SECURED BETWEEN FRAMING (NO THRU-BOLTING).
- 3** BOLT WELDED TO THE CABINET INTERIOR WALL WITH A GREEN GROUND NUT, AND THE CABINET MUST BE GROUNDED ACCORDINGLY.
- 4** ALL EXPOSED FASTENERS PAINTED TO MATCH ADJACENT FINISH.



SIGN B | QTY :1 | SCALE: 3/4"=1'-0" | 2.00 SQ FT
SINGLE SIDED NON-LLUMINATED "CHIPOTLANE" POST W/ DRIVE THRU ANNOUNCE SIGN

SIDE VIEW
SCALE: 3/4"=1'-0"

FRONT VIEW
SCALE: 3/4"=1'-0"

EXPANDED VIEW
SCALE: 1:2

ANCHOR BOLT DETAIL
SCALE: 1"=1'-0"

MOUNTING PLATE
SCALE: 1"=1'-0"

PLAN VIEW
SCALE: 3/4"=1'-0"

FOOTING PLAN VIEW
SCALE: 1"=1'-0"

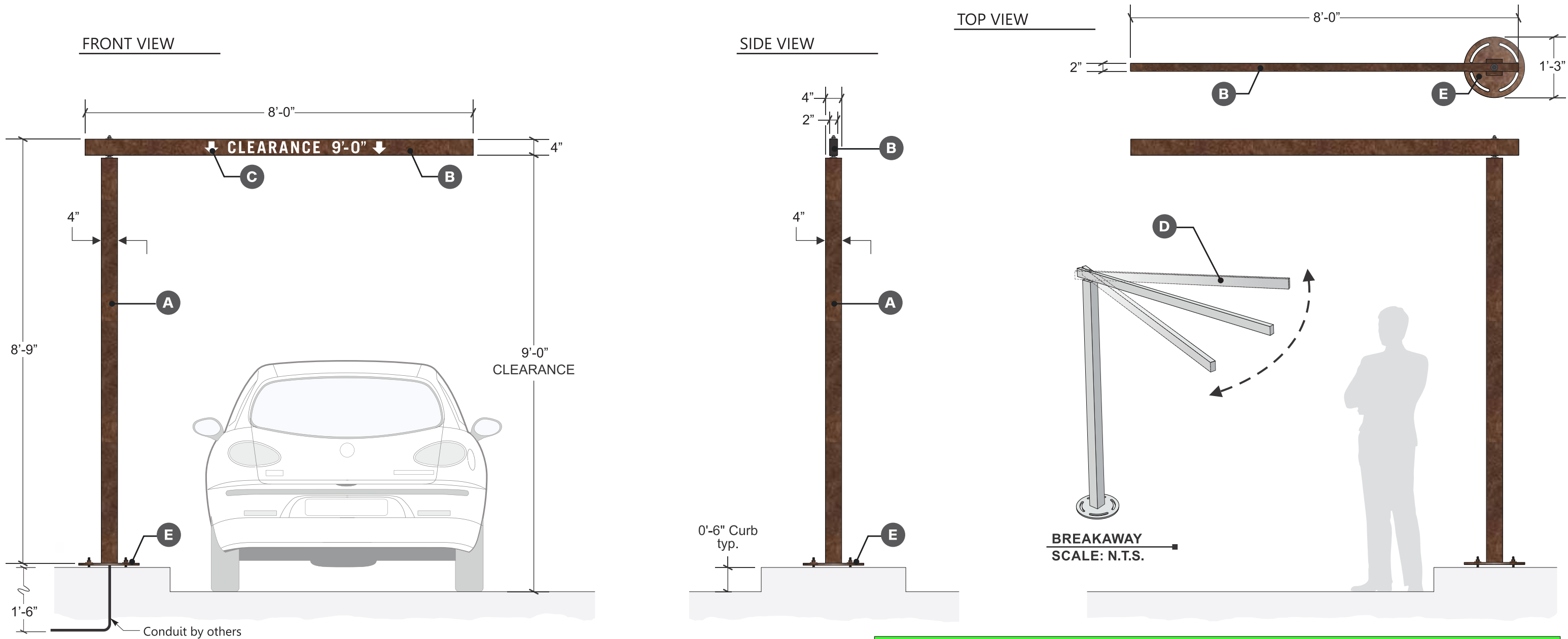
SPECIFICATIONS

- A** Waterjet cut & break formed 1/8" aluminum post (w/ capped top) welded to aluminum mounting plate. Removable side panel for access
- B** Reverse-cut text w/ 3/16" milky-white acrylic backing
- C** First surface applied vinyl pepper logo
- D** Posts mounting plate attaches to embedded bolts in caisson
- E** Concrete caisson & rebar as required

NOTES:

- 1** INSTALLER TO DISCUSS WITH GC LOCATION OF SIGNAGE AND HEIGHT OF SONOTUBE IN COMPARISON TO FINISH GRADE PRIOR TO STARTING FOOTINGS.
- 2** REFERENCE **DIMENSIONAL SITE PLAN** PRIOR TO STARTING FOUNDATION TO ENSURE PROPER DISTANCE FROM CURB LINE.
- 3** EXACT FOOTING DIMENSIONS TO BE DETERMINED BY ENGINEER DRAWINGS.
(REMOVE NOTE ONCE DIMENSIONS ARE CONFIRMED)

SIGN C | QTY :1 | SCALE: 1/2"=1'-0" | 2.67 SQ FT
DRIVE THRU LANE PIVOT CLEARANCE BAR W/ SIGN



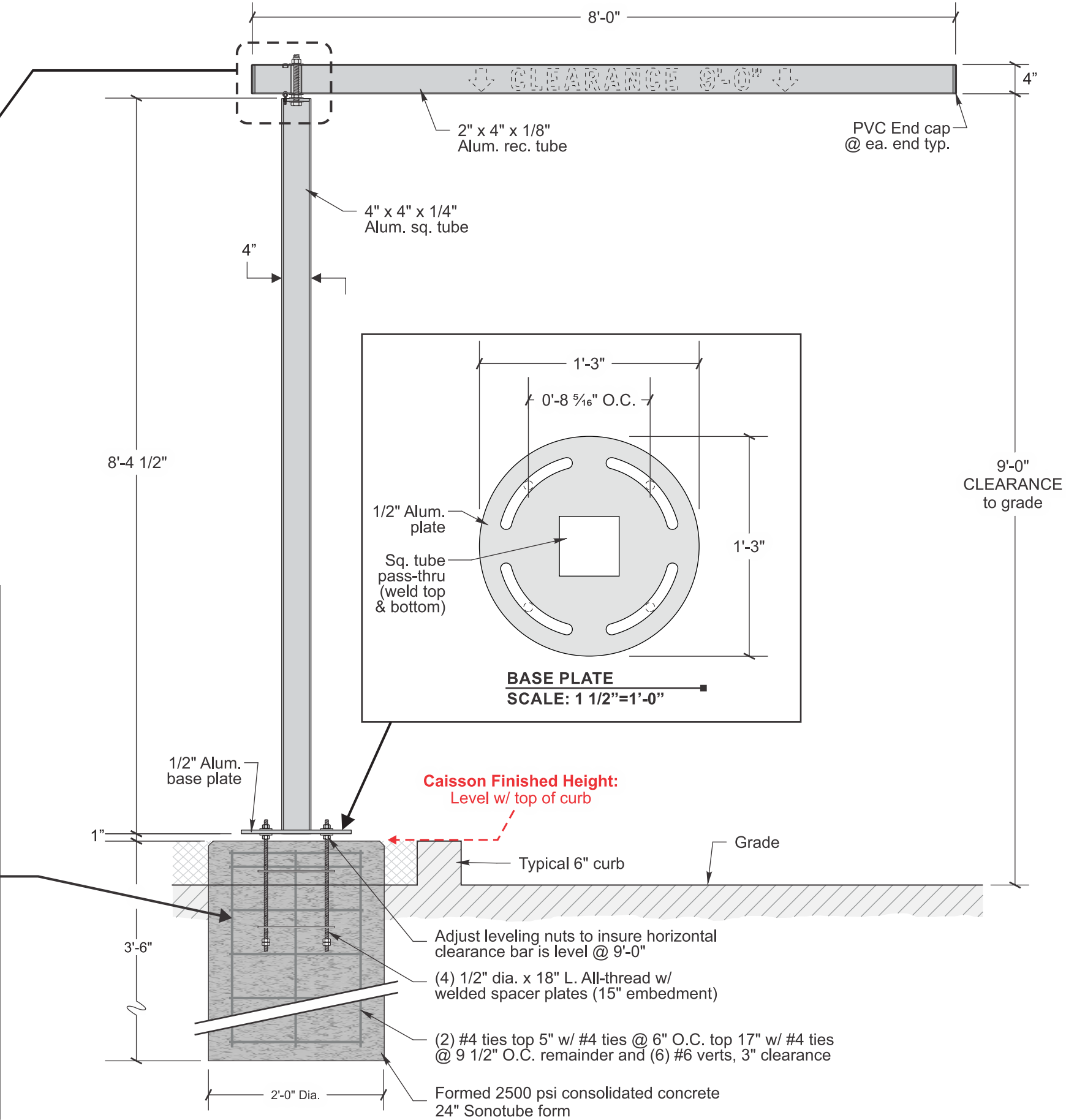
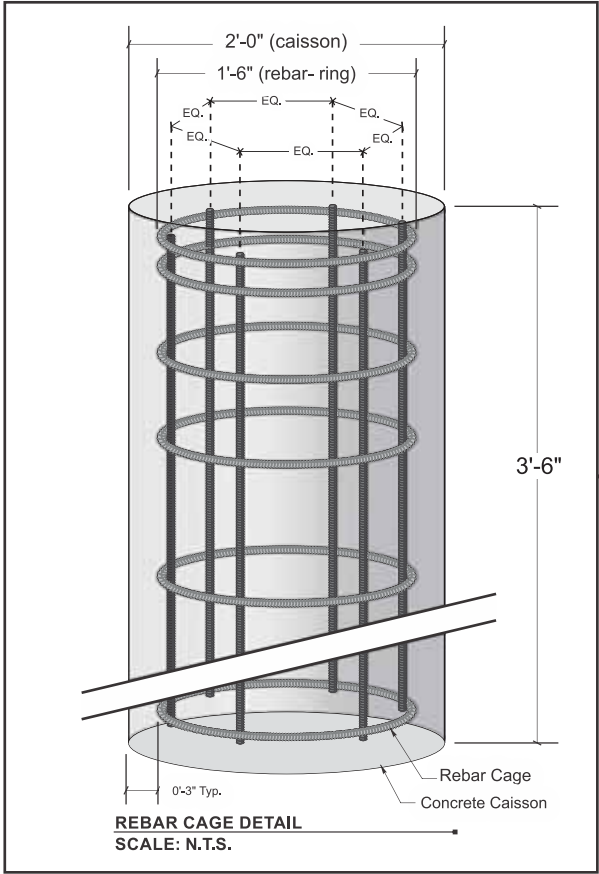
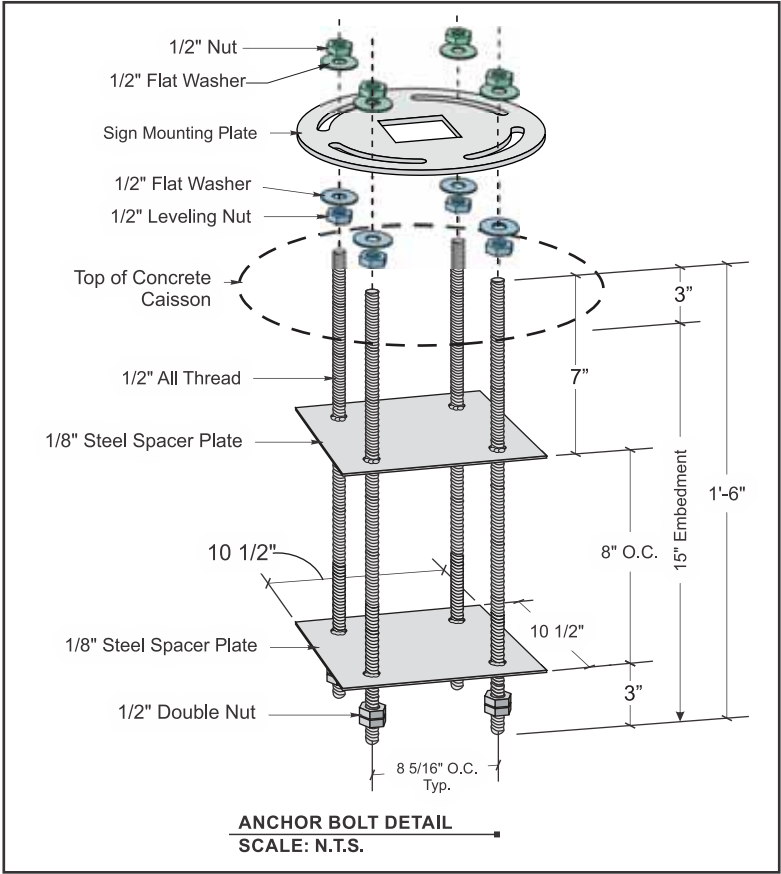
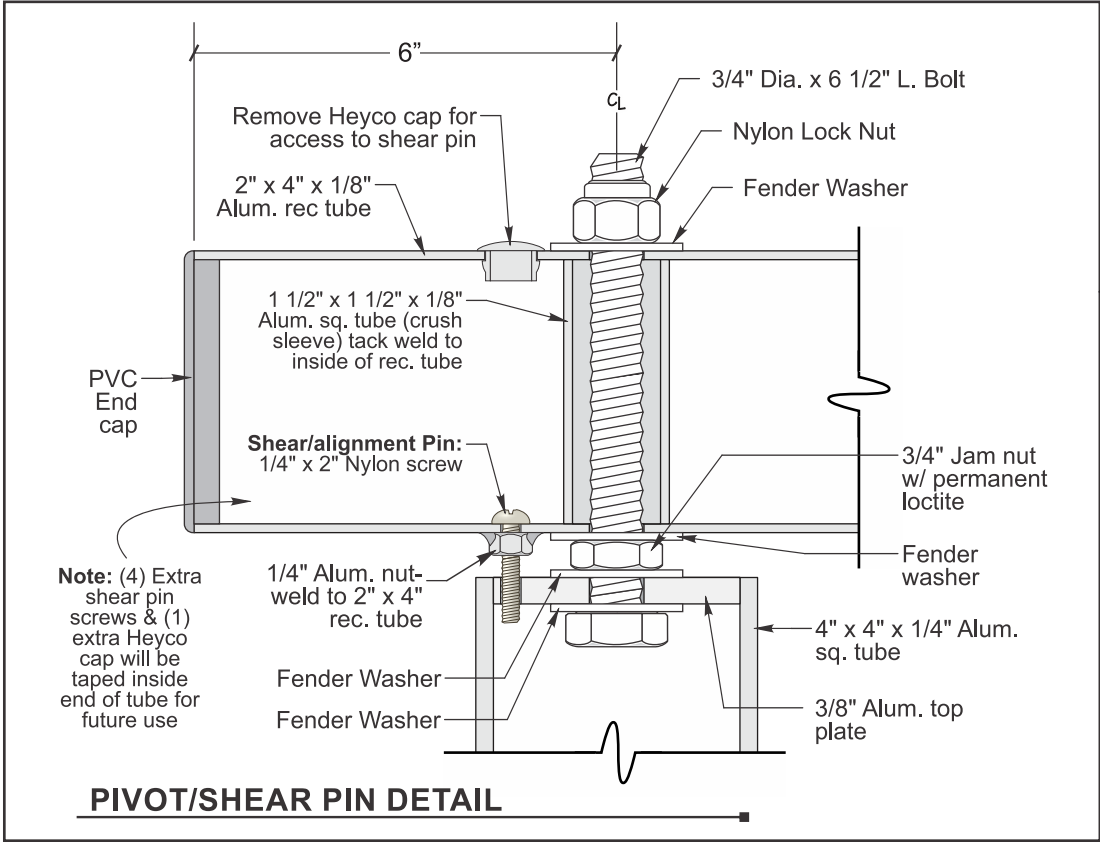
SPECIFICATIONS

- A** 4" x 4" x 1/4" aluminum square tube w/ 3/8" aluminum top plate and pivot
- B** 2" x 4" x 1/8" aluminum rec. tube w/ black PVC end caps
- C** 3 1/4" x 45" Reflective vinyl graphics
- D** To minimize damage from impact, the top beam will give way & rotate when struck. Beam can then be manually rotated back to original position. Rotation from fixed position will break shear/alignment pin, which can be easily serviced during realignment of clearance bar.
- E** Slotted 1/2" alum. base plate attaches to embedded bolts in caisson. Sonotube form, rebar, and mounting hardware (four 1/2" all-thread welded to 1/8" steel spacer plates w/ washers & leveling nuts) Hole for footing plus poured & formed concrete caisson w/ embedded mounting.

NOTES:

- FOOTING MUST BE POURED CONSIDERING BASE MOUNTING PLATE OF SIGN IS EQUAL W/ CURB HEIGHT TO ENSURE TOP OF THE CLEARANCE BAR IS 9' ABOVE GRADE.
 - REFERENCE **DIMENSIONAL SITE PLAN** PRIOR TO STARTING FOUNDATION TO ENSURE PROPER DISTANCE FROM CURB LINE.
 - THE ELONGATED SLOTS WITHIN FOOTING TEMPLATE NEEDS TO BE SET HORIZONTAL TO CURB LINE SO THE VERTICAL SQUARE TUBE FOR THE CLEARANCE BAR IS PLACED PERPENDICULAR TO DRIVE LANE TO ENSURE ORIENTATION OF SIGN AND SHEAR PIN IS CORRECT. THE ANCHOR BOLTS NEED TO BE SET CENTER TO CENTER IN THE OPEN SLOTS ON THE BASEPLATE CONSIDERING PLACEMENT OF THE SIGN.
 - EXACT FOOTING DIMENSIONS TO BE DETERMINED BY ENGINEER DRAWINGS.
- (REMOVE NOTE ONCE DIMENSIONS ARE CONFIRMED)

DRIVE THRU LANE PIVOT CLEARANCE BAR W/SIGN (CONT.)








EXISTING

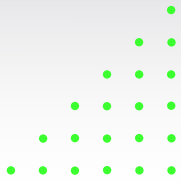


SPECIFICATIONS

- A 3/16" white polycarbonate faces. Install in both sides of existing tenant pylon
- B Opaque vinyl to match PMS 4625 C Adobo Brown and PMS 484 C Roasted Red w/ Translucent white vinyl graphics, applied first surface

COLOR KEY		
ARLON CAST VINYL #2100-3663 OR EQUIV. PMS 4625 C ADOBO BROWN	ARLON CAST VINYL #2100-3664 OR EQUIV. PMS 484 C ROASTED RED	WHITE POLYCARBONATE
		

PROPOSED



FIXTURE SPECIFICATIONS

INTENDED USE

The specification grade Alcon Lighting 31025 Architectural LED Sign Light Fixture delivers energy efficient LED light to provide practical and stylish light to exterior signs.

FEATURES

Construction: Corrosion Resistant Cast Brass

Lens: Clear and heat resistant Tempered Lens

Voltage: 12V

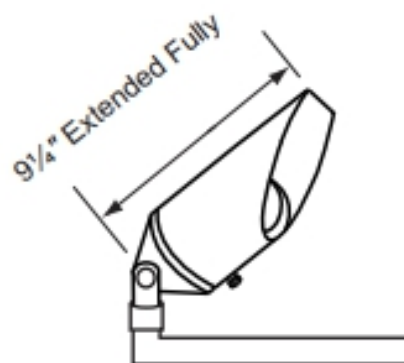
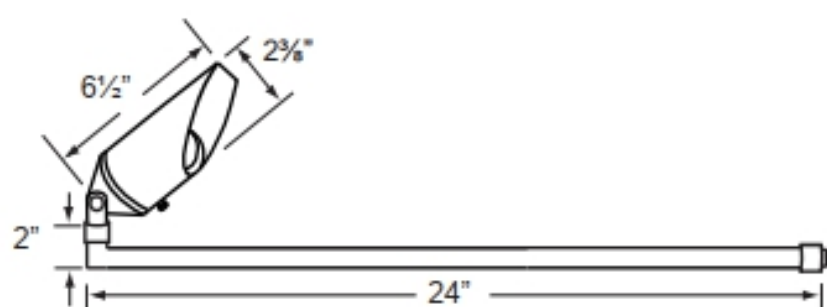
Wattage: 5 Watts

Warranty: 5 Years Carefree for Parts & Components
(Labor Not Included)

Remote 12V transformer required.

Prewired with a 3ft, 18-2 direct burial cord.

Adjustable cast brass knuckle with thumb screw. Silicone gasket for water tight sealing.



5" Wall Mount Canopy Included



ORDERING INFORMATION Example: (31025-27K-15-GM)

Model	Color Temperature Lumens	Stem Length	Beam Spread	Finish
31025	27K 2700K 450lms	24 24" Stem <small>Standard</small>	15 15° Spot	GM Gun Metal
	30K 3000K 470lms	18 18" Stem	38 38° Flood	AB Antique Bronze
			60 60° Wide Flood	