



## NREDI 2.0 Dealer Presentation Package



**Bruce Bennett Nissan (2620)  
Wilton, CT**

February 28, 2020

**NREDI 2.0**

**Nissan of Wilton  
978 Danbury Rd  
Wilton CT**

**Scope Includes:**

1. Obtain all required permits per attached artwork.

- a. Permits to be invoiced at cost.
- b. Permit to be sent to the PM with a receipt validating permit cost.

\*\*\*Dealer's GC is to permit building mounted "tablet" sign as part of their plans; however, the city has already warned that the square footage of the Nissan logo on the tablet will count toward the wall sign allowance.

2. Pre-install walk through. Meet with GC and/or dealer on site to verify all required electrical is present and access is available prior to installation. See attached pre-con sheet that will be utilized, confirm tablet anchor placement.

3. Receive and immediately inspect all product. Installer MUST notify AGI PM within 24 hours of any damages or missing materials.

4. Install as per AGI install manual. Approximate Date:

a. Building Mounted Nissan "Slim Tablet" (Sign(S) \_\_B\_\_ ) Qty \_1\_\_

- i. Ships on dedicated truck.
- ii. GC will provide mounting template prior to installation that tablet will mount to.
- iii. Face weighs approx. \_\_\_\_\_ lbs, approx. \_\_\_\_\_ lbs with shipping stand.

b. Main Brand Sign RETRO (Sign(s) \_\_A\_\_ ) Qty \_2\_\_

- i. Arrives in One Main Piece (base cover will be in separate crate)
- ii. Perform site survey of existing foundation using Anchor Bolt Survey document provided by PM.
- iii. Sign's total weight is \_\_\_\_\_ lbs, approx. \_\_\_\_\_ lbs with shipping stand.

c. Channel Letters (Sign(s) \_\_D,C, G,E \_\_\_\_\_ ) Qty sets \_4 sets each\_\_

- i. GC/Dealer to provide backing material for signs and electric within 10' of sign.
- ii. Install per AGI artwork and install manual.
- iii. AGI to supply pattern and hardware. Installer to verify mounting on sign matches pattern prior to drilling.

d. Interior Tablet (Sign \_\_F\_\_ ) Qty \_1\_\_

- i. Install Tablet Center of reception doors in Service Bay

5. Prior to leaving site ensure all materials are picked up from site and dispose of

6. Follow AGI artwork and install manuals only, do not utilize GC drawings on site. Contact PM with any questions while on site, not GC or dealer.

7. Provide completion photos per the installer checklist/photo shooter guide and dealer sign off with date within 24 hours of job completion.

8. Removal of signage at \_\_same address during same time of installation.\_\_\_\_\_

- i. 12' twin pole frestanding sign (QTY of 2)\_\_\_\_\_

**NISSAN NORTH AMERICA**  
**Dealer Presentation Package**



**Landlord Authorization Letter (LOA)**

To Whom it May Concern:

Regarding Permit Application for

Bruce Bennett Nissan

\_\_\_\_\_

I declare that I am the authorized owner/agent of the above mentioned premises. I hereby authorize Architectural Graphics Inc. and their agent, \_\_\_\_\_, to apply for necessary municipal approvals and permits, and to arrange for installations.

Signature

Name

Patrick Dibre

Company Name

902 Danbury Realty LLC

Address

1124 Route 202 S. Suite B9  
Raritan NJ 08869

Phone

908 350 0501

Date

2/21/2024

Notarization Stamp below

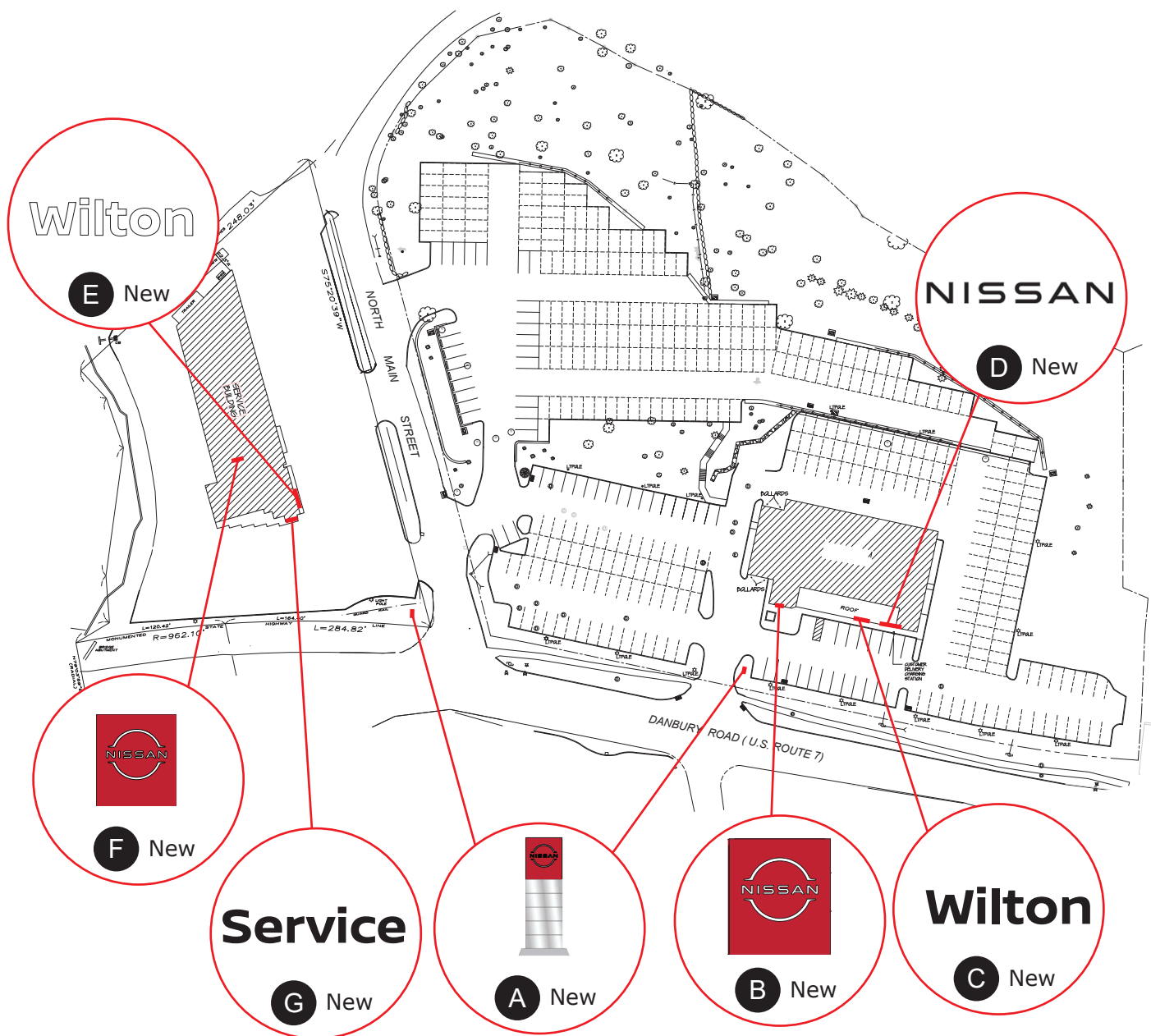
# NISSAN NORTH AMERICA

## Dealer Presentation Package



### 1. SITE PLAN

The following provides a visual representation of the prepared schedule:





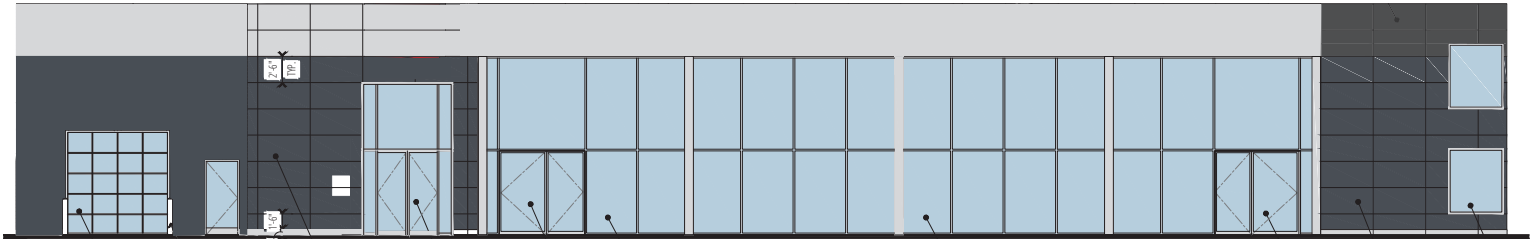
# NISSAN NORTH AMERICA

## Dealer Presentation Package



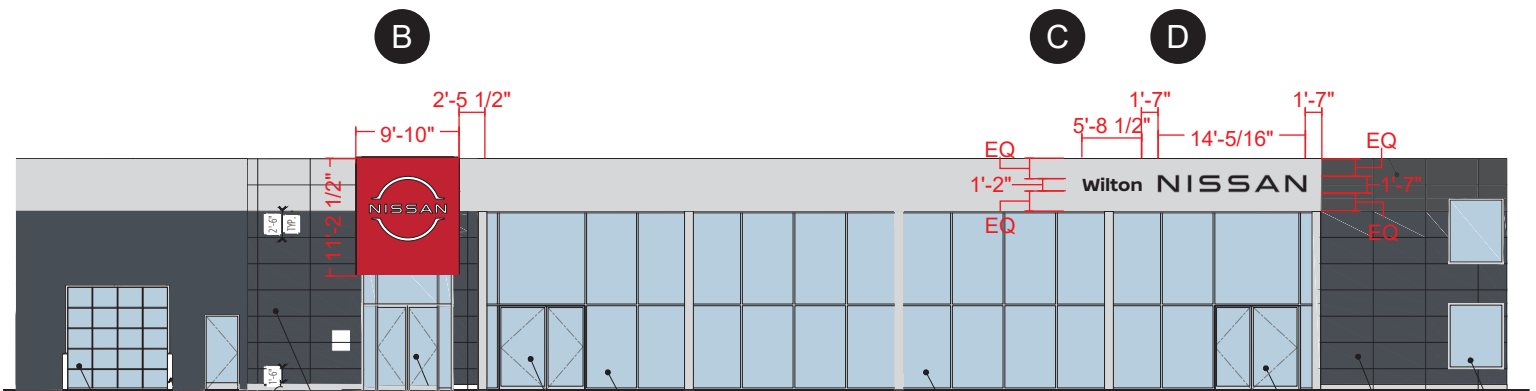
### 2. SCHEDULE OF SIGNS

Site Before



West Elevation

### Proposed Signage



West Elevation

- B:** Small Slim Tablet
- C:** T43 DNL
- D:** T43 NWM

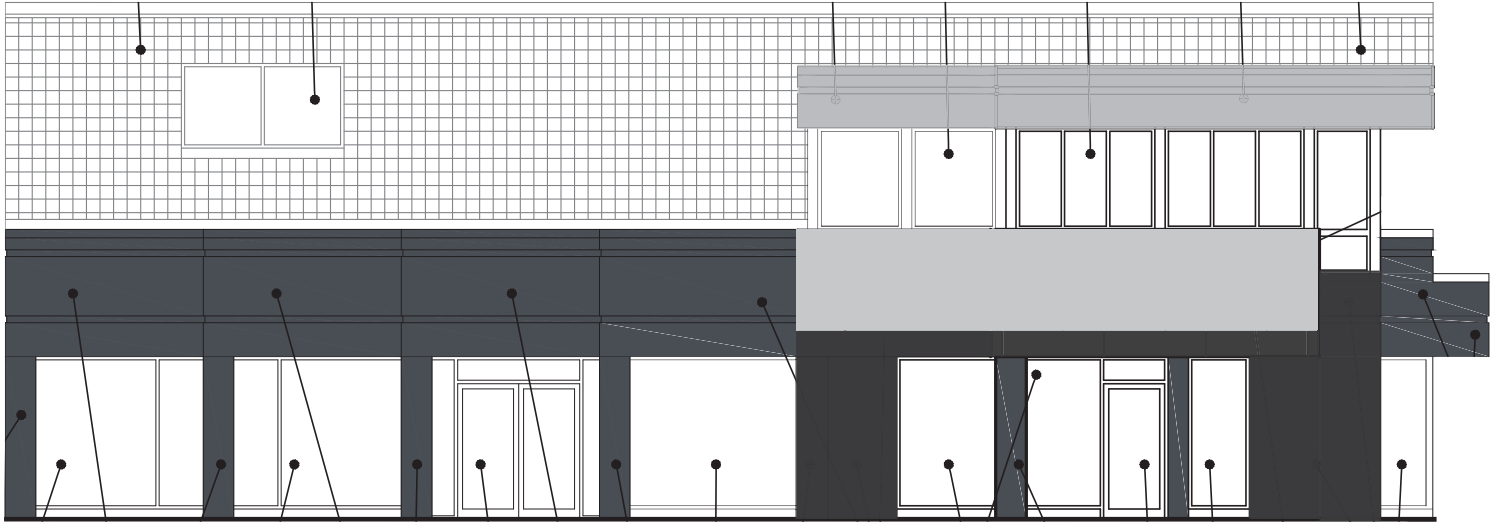
# NISSAN NORTH AMERICA

## Dealer Presentation Package



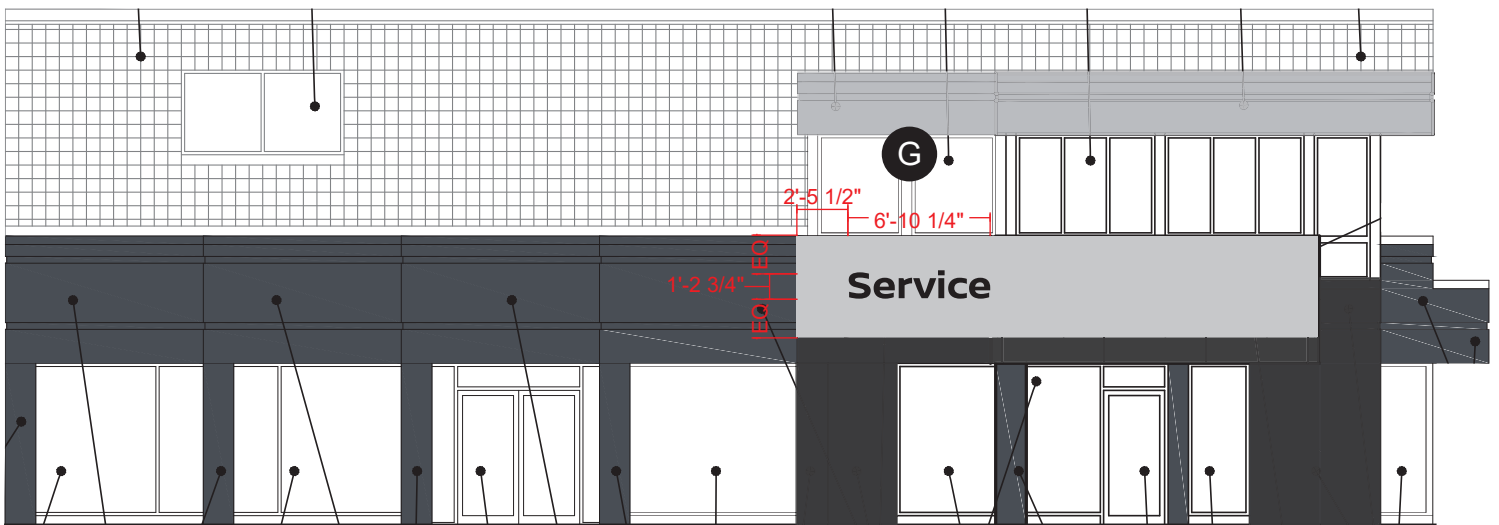
### 2. SCHEDULE OF SIGNS

#### Site Before



West Service Elevation

#### Proposed Signage



West Service Elevation

**G:** Small Service Letters

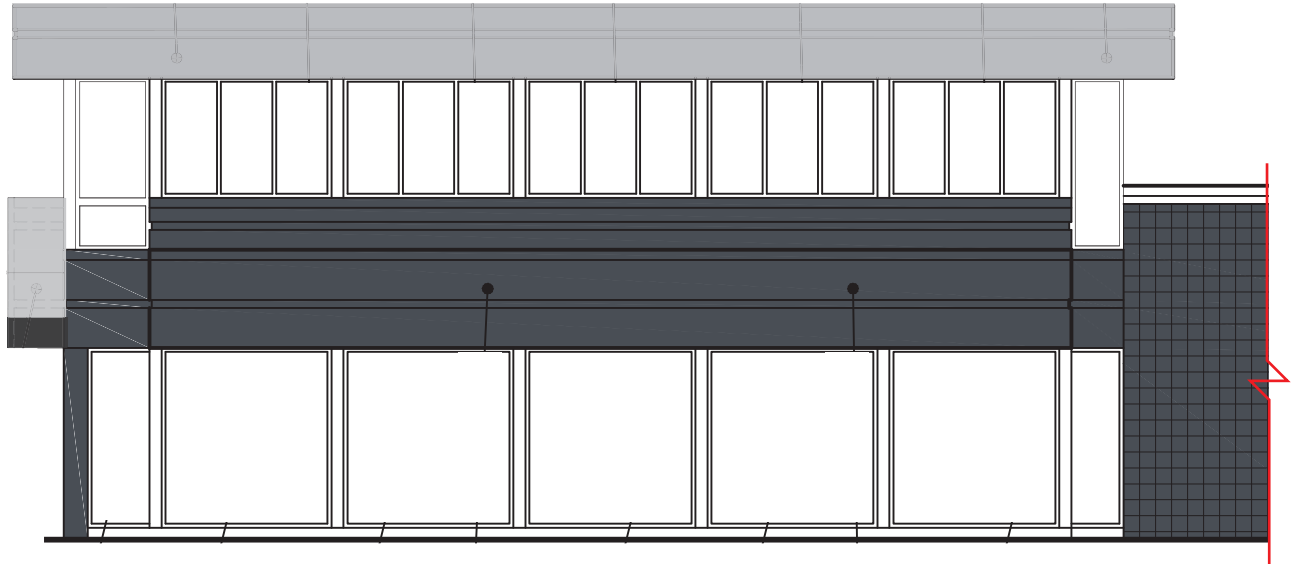
# NISSAN NORTH AMERICA

## Dealer Presentation Package



### 2. SCHEDULE OF SIGNS

#### Site Before



Partial South Elevation

#### Proposed Signage



Partial South Elevation

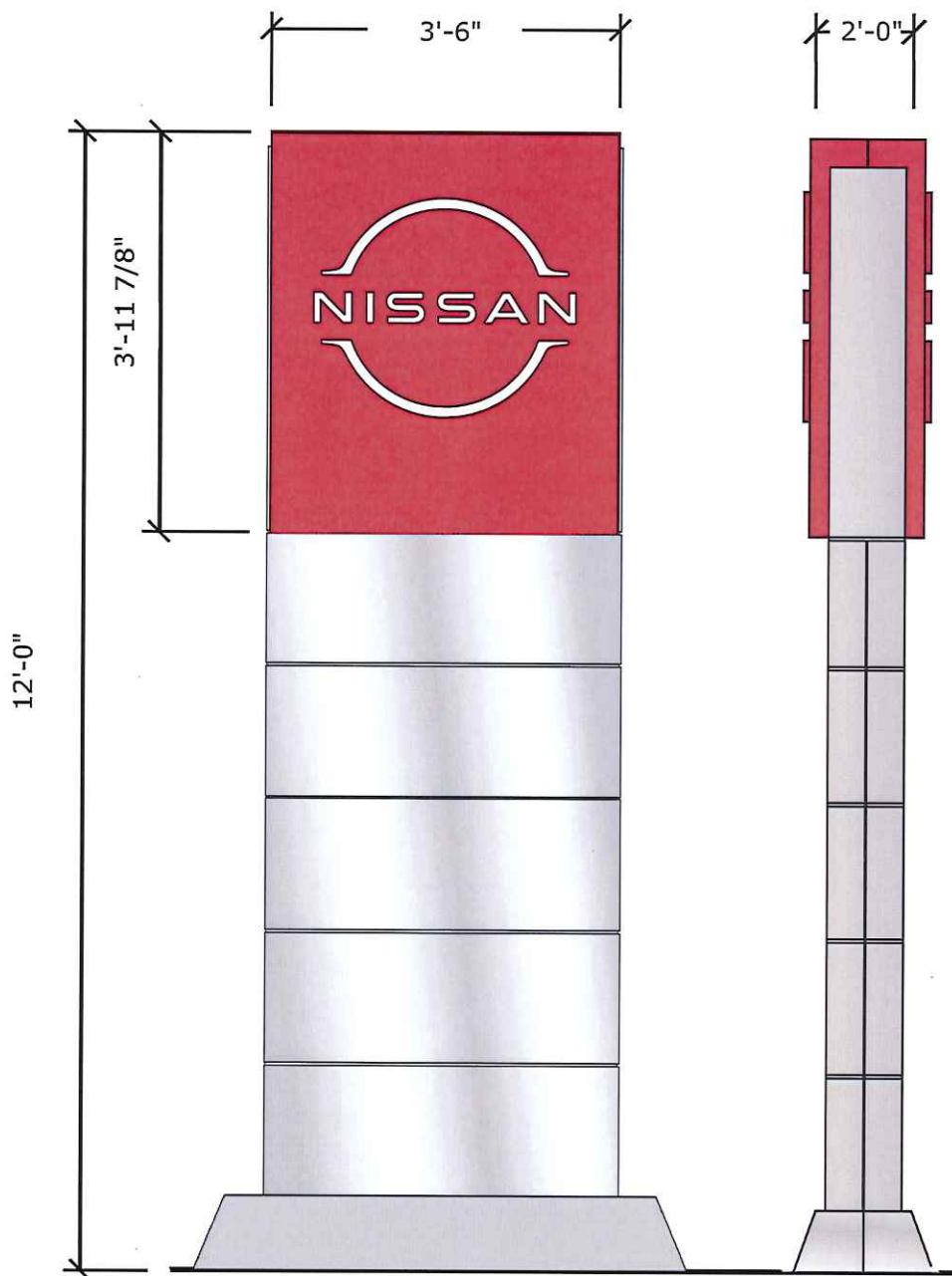
**E:** T43 DNL (White Faces)

# NISSAN NORTH AMERICA

## Dealer Presentation Package



### 2. SCHEDULE OF SIGNS



A	P14	Retro - Main Brand Pylon
	13.96 sf	Total of 2
	New	

### General Sign Specifications

☐ Interior      ☒ Exterior  
☐ Single Faced      ☒ Double Faced  
☐ \_\_\_\_\_  
☐ Non-Illuminated  
☒ Illuminated  
 \_\_\_\_\_ 120 Volts      3.6 Amps(+/-)

<b>Location</b>	WILTON, CT
<b>Windload</b>	115 MPH / ASCE 7-10

## Drawing Revisions

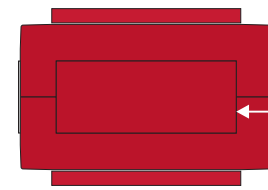
Change	Date	Drawn By
		11
		22
		33
		44
		55
		66
		77
		88
		99
		10
		11

This document is the sole property of Architectural Graphics, Inc., and all design, manufacturing, reproduction, use, and sale rights regarding the same are expressly forbidden. It is submitted under a confidential relationship, for a special purpose, and the recipient, by accepting this document assumes custody and agrees that this document will not be copied or reproduced in whole or in part, nor its contents revealed in any manner or to any person except for the purpose for which it was tendered, nor any special features peculiar to this design be incorporated in other projects.

Code	85059	Type	C
------	-------	------	---

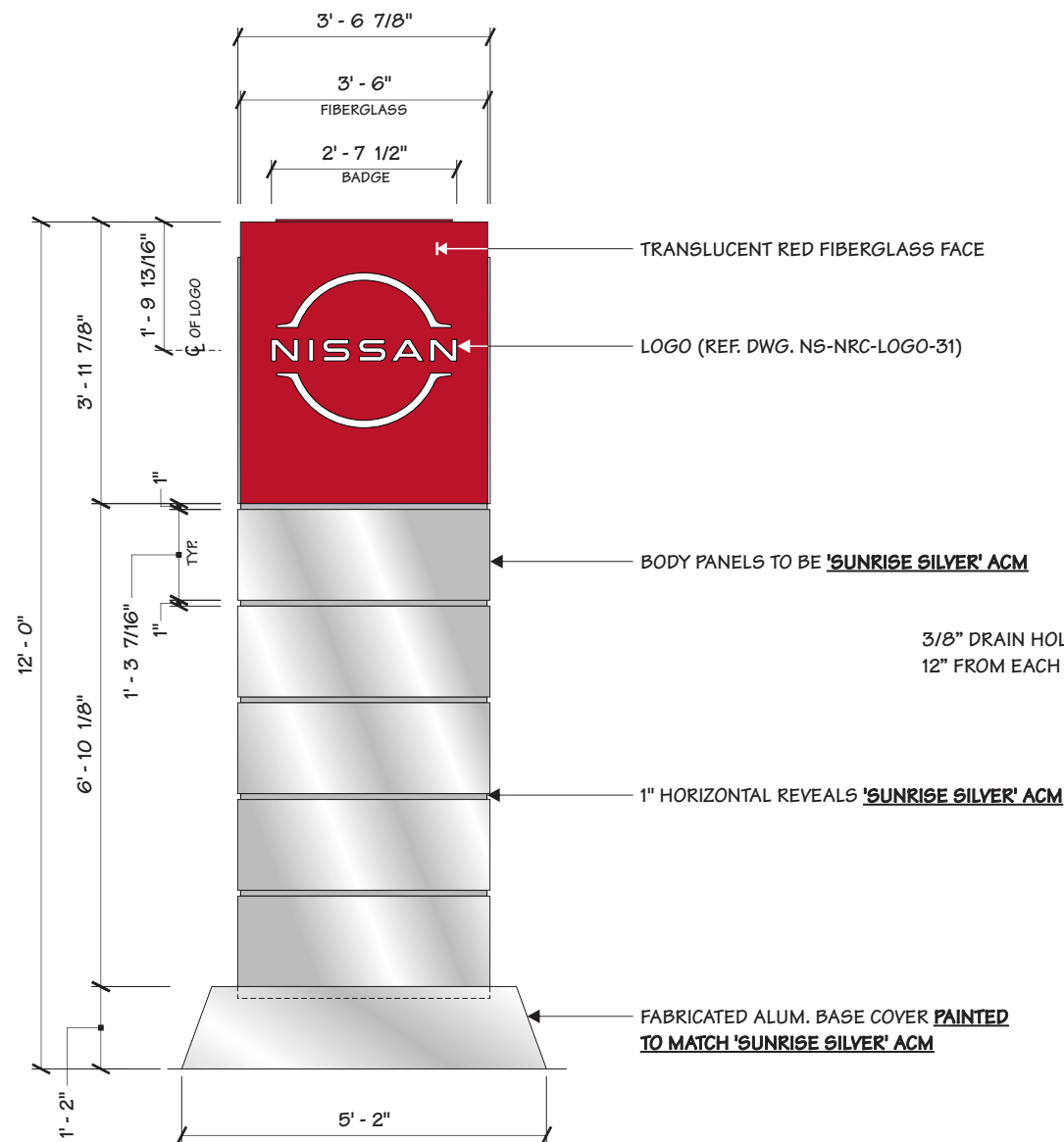
Sign Type	PG #:
P14R-115 (SALES)	1

# Sales Pylon

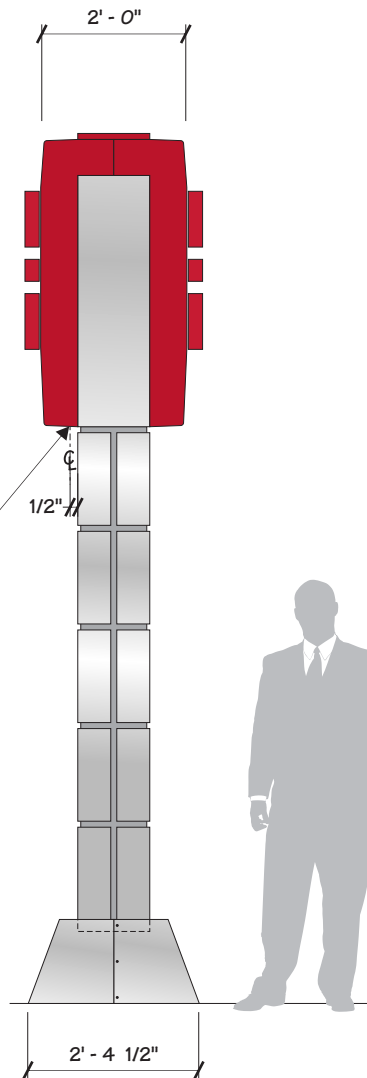


— ALUM. TOPPER PAINTED MAP TO MATCH  
FIBERGLASS RED

1 PLAN VIEW  
1  $3/8" = 1' - 0"$



2 FRONT ELEVATION  
1  $3/8" = 1' - 0"$



**3** SIDE VIEW  
1  $3/8" = 1' - 0"$







NISSAN NRC NEXT

AGI EoR M. SMITH

**Drawn By DLR**

**Project Mgr. B. ZELMAN**

☐ Interior                      ☒ Exterior  
☐ Single Faced                ☒ Double Faced  
☐ \_\_\_\_\_

**■ Illuminated**

120 Volts 3.6 Amps(+/-)

**Location** WILTON, CT

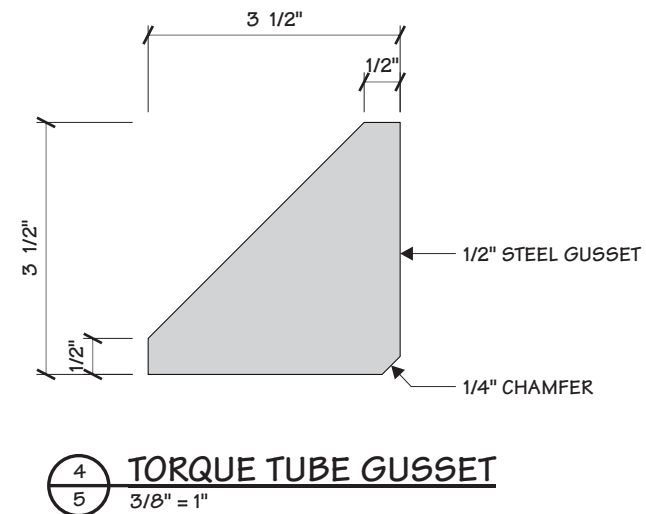
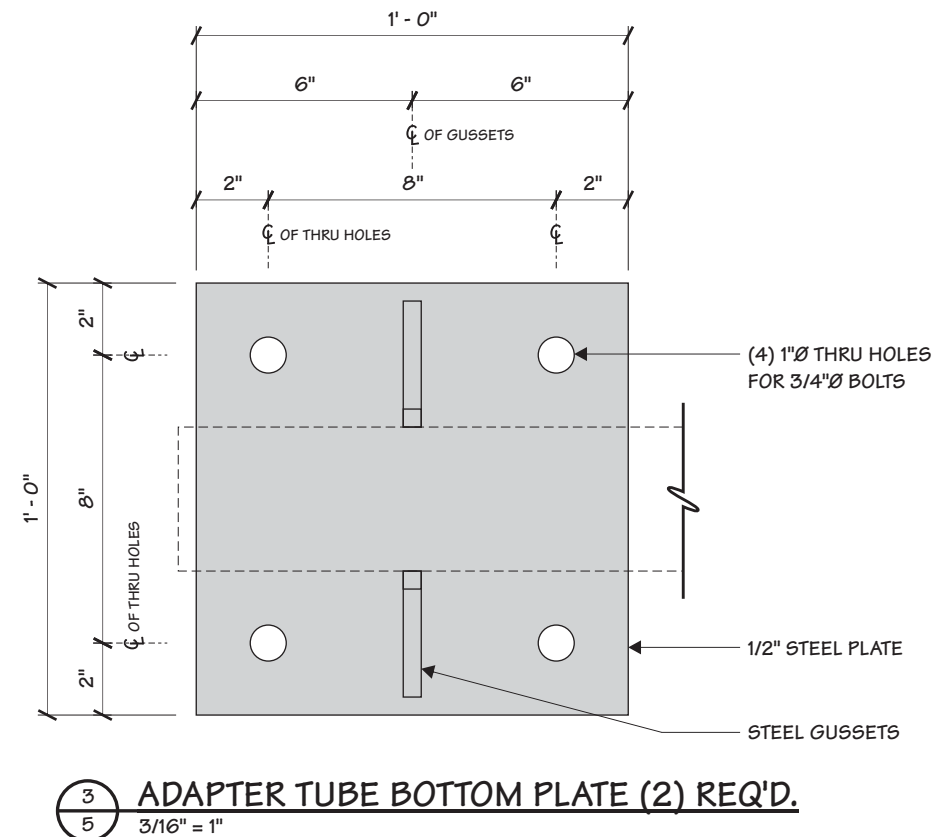
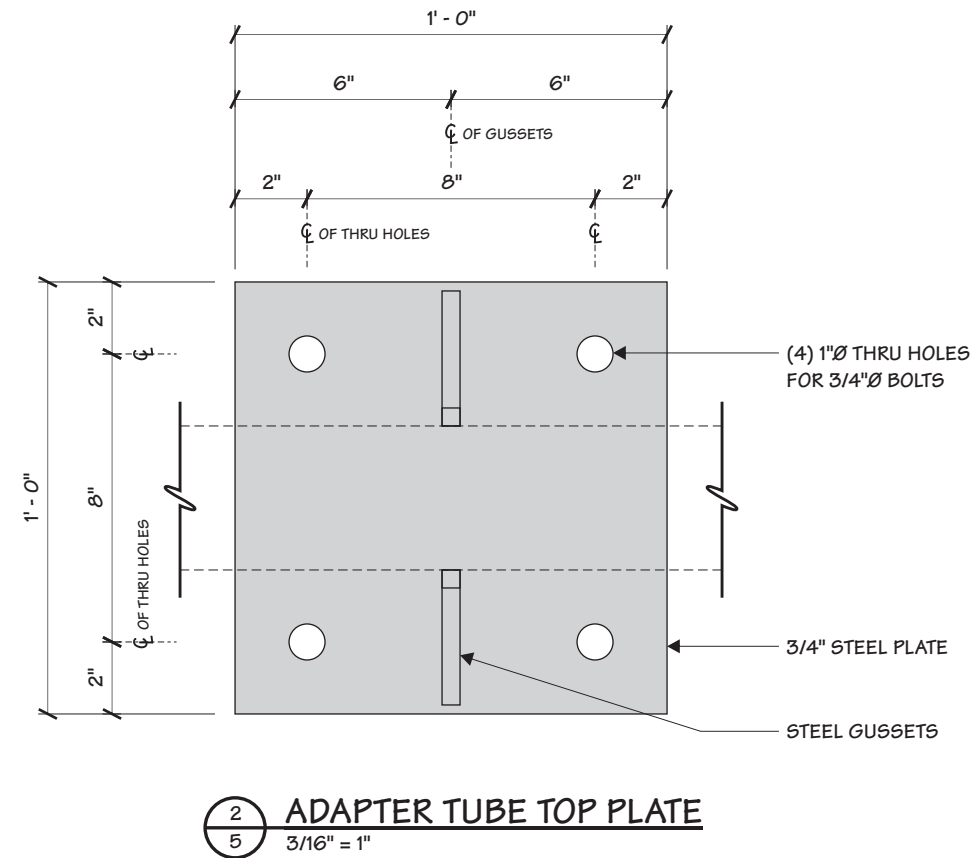
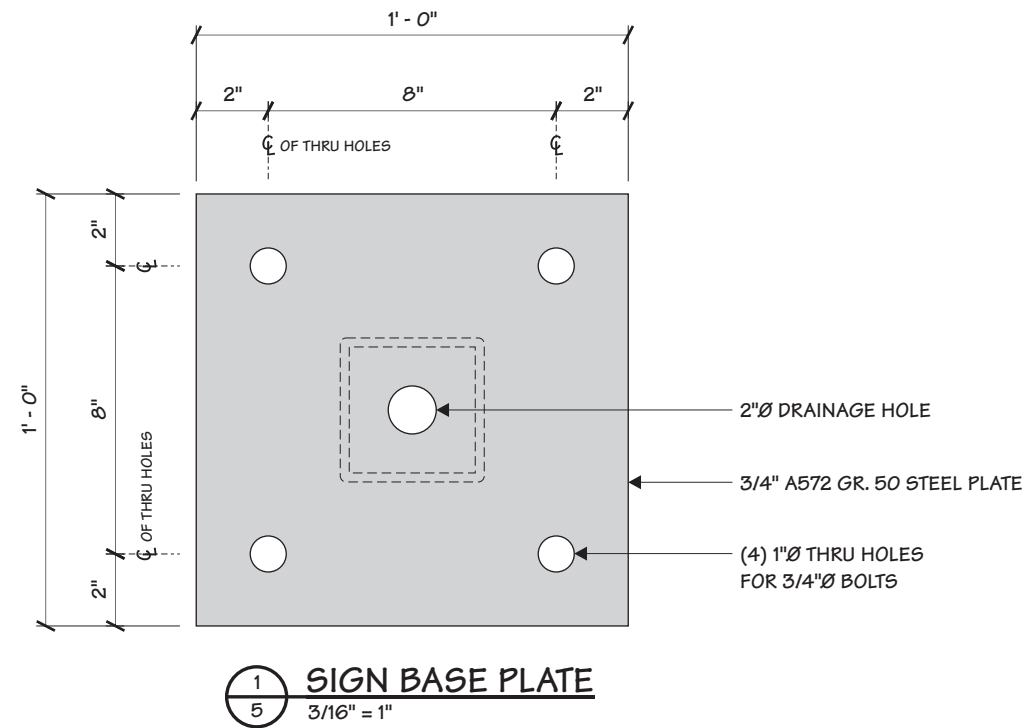
**Windload** 115 MPH / ASCE 7-10

Drawing Revisions		
Drawn By	Date	Change
A		
B		
C		
A		
E		
F		
G		
H		
I		
J		
K		
L		

This document is the sole property of Architectural Graphics, Inc., and all design, manufacturing, reproduction, use and sale rights regarding the same are expressly forbidden. It is submitted under a confidential relationship, for a special purpose, and the recipient, by accepting this document assumes custody and agrees that this document will not be copied or reproduced in whole or in part, nor its contents revealed in any manner or to any person except for the purpose for which it was tendered, nor any special features peculiar to this design be incorporated in other projects.

Type  
C

PG #: 5



# Service Pylon

NISSAN NRC NEXT

AGI EoR M. SMITH

Drawn By DLR

### General Sign Specifications

☐ Single Faced      ☒ Double Faced

☐ Non-Illuminated

120 Volts 3.6 Amps(+/-)

Windload 115 MPH / ASCE 7-10

[illegible][illegible][illegible][illegible][illegible][illegible][illegible][illegible][illegible][illegible][illegible][illegible]

\_\_\_\_\_

[illegible]

reproduction, use and sale rights regarding the same are expressly forbidden. It is submitted under a confidential relationship, for a special purpose, and

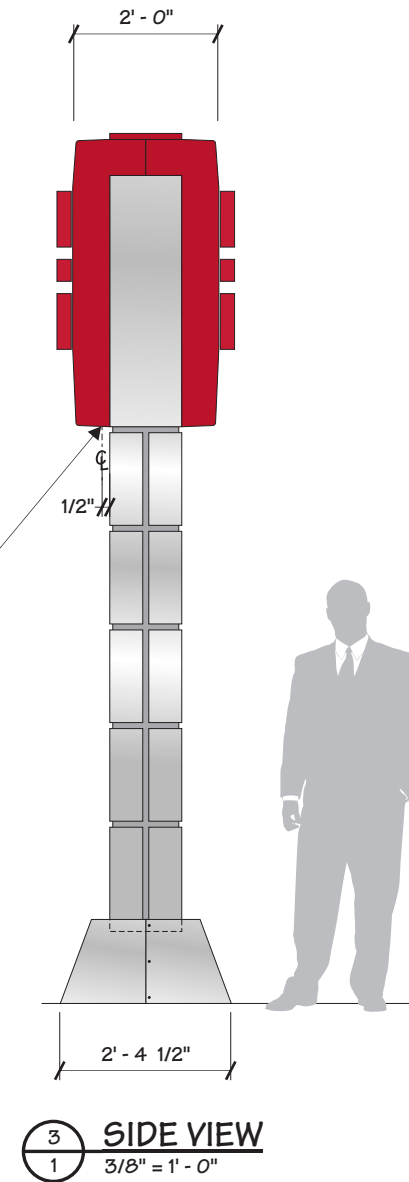
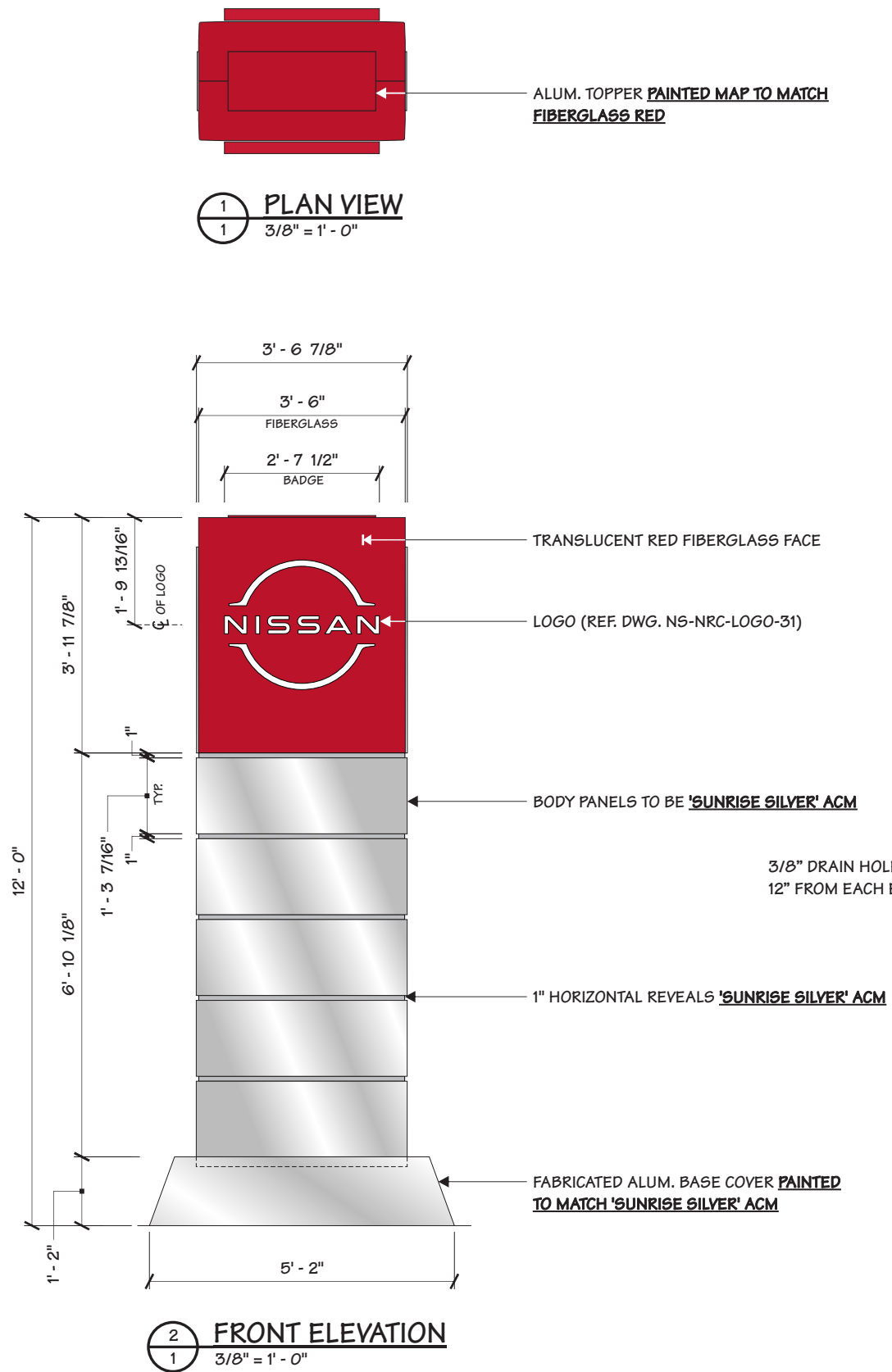
copied or reproduced in whole or in part, nor its contents revealed in any manner or to any person

[illegible]

85059	C
-------	---

D14B 115 (SERVICE)	1
--------------------	---

---



This document is the sole property of Architectural Graphics, Inc., and all design, manufacturing, reproduction, use and sale rights regarding the same are expressly forbidden. It is submitted under a confidential relationship, for a special purpose, and the recipient, by accepting this document assumes custody and agrees that this document will not be copied or reproduced in whole or in part, nor its contents revealed in any manner or to any person except for the purpose for which it was tendered, nor any special features peculiar to this design be incorporated in other projects.

85059 | C

<b>Sign Type</b>	<b>PG #:</b>
	1

---



NISSAN NRC NEXT

AGI EoR M. SMITH

**Drawn By DLR**

## General Sign Specifications

☐ Interior      ☒ Exterior  
☐ Single Faced      ☒ Double Faced  
☐ \_\_\_\_\_  
☐ Non-Illuminated  
☒ Illuminated  
 \_\_\_\_\_ 120 Volts \_\_\_\_\_ 3.6 Amps(+/-)

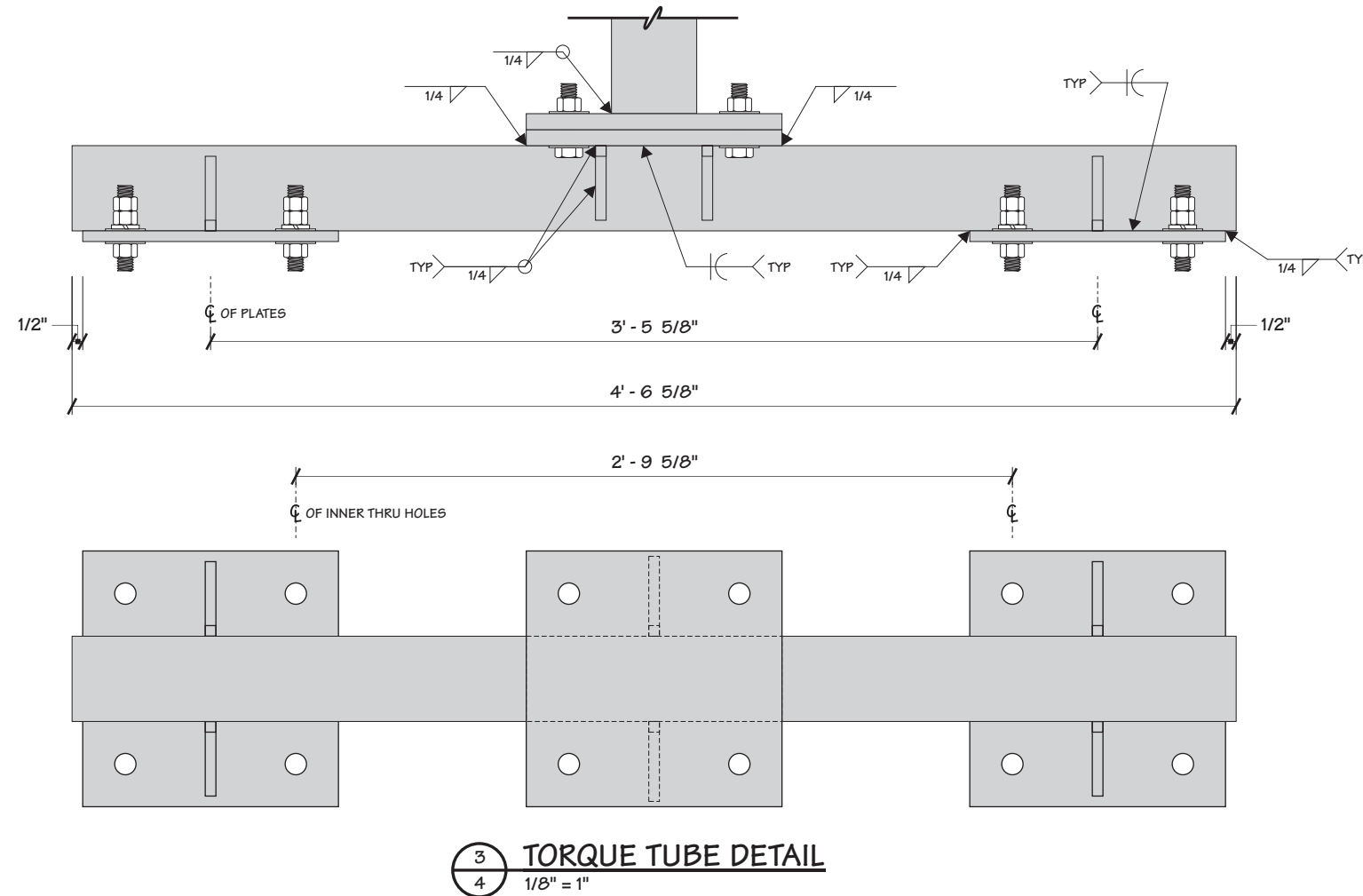
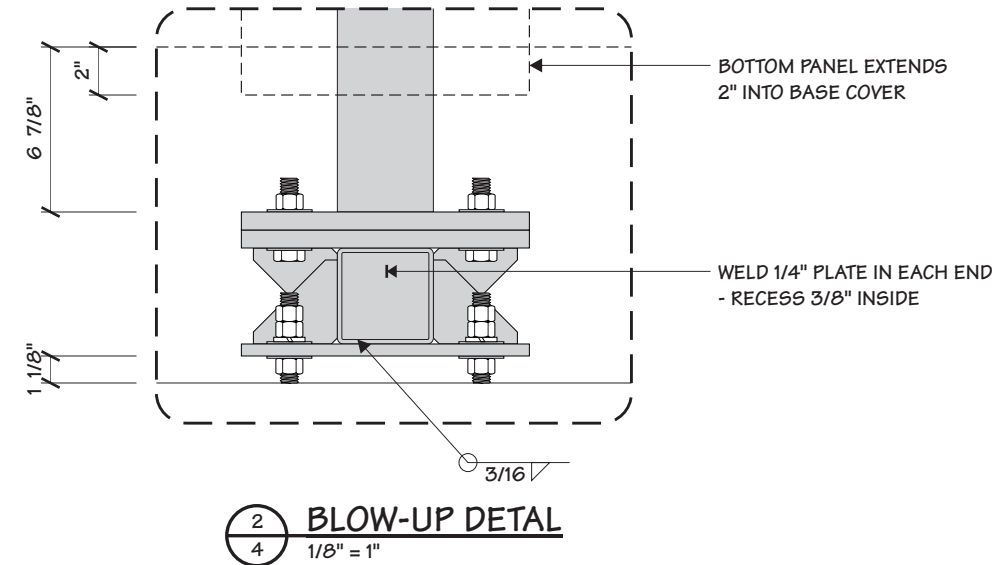
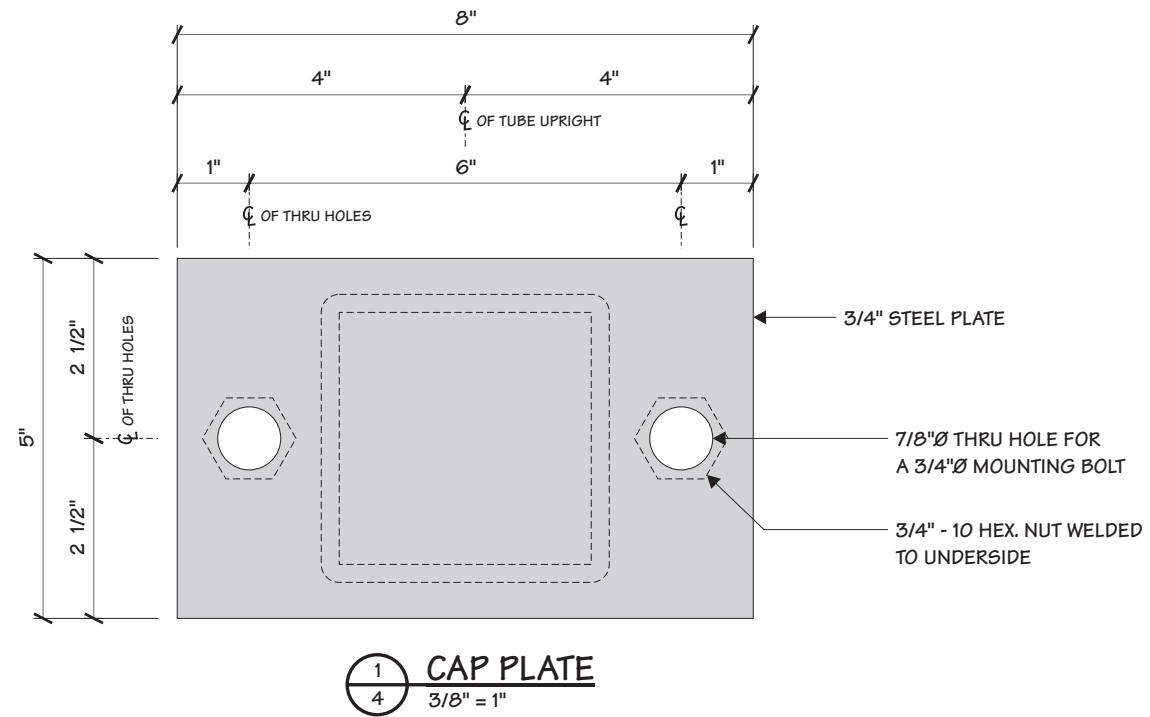
**Windload** 115 MPH / ASCE 7-10

Drawing Revisions		
Drawn By	Date	Change
A		
B		
A		
A		
A		
B		
A		
B		
A		
B		
A		
B		
A		

This document is the sole property of Architectural Graphics, Inc., and all design, manufacturing, reproduction, use and sale rights regarding the same are expressly forbidden. It is submitted under a confidential relationship, for a special purpose, and the recipient, by accepting this document assumes custody and agrees that this document will not be copied or reproduced in whole or in part, nor its contents revealed in any manner or to any person except for the purpose for which it was tendered, nor any special features peculiar to this design be incorporated in other projects.

Sign Type	P14R-115 (SERVICE)
-----------	--------------------

PG #: 4



2655 International Parkway  
Virginia Beach, VA 23452



Date 12.13.23

**AGI EoR M. SMITH**  
**Lead Drafter DLR**  
**Drawn By DLR**  
**Project Mgr. B. ZELMAN**

**General Sign Specifications**

☐ Interior ☒ Exterior

☐ Single Faced ☒ Double Faced

☐ \_\_\_\_\_

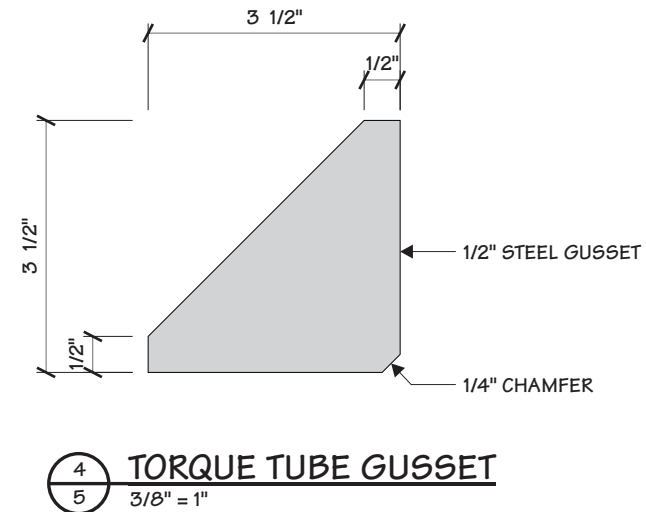
☐ Non-Illuminated

☒ Illuminated

\_\_\_\_\_ 120 Volts \_\_\_\_\_ 3.6 Amps{+/-}

Location WILTON, CT

Windload 115 MPH / ASCE 7-10



Drawing Revisions		
Drawn By	Date	Change
A		
Z		
B		
A		
A		
A		
A		
A		
B		
B		
B		
A		

This document is the sole property of Architectural Graphics, Inc., and all design, manufacturing, reproduction, use and sale rights regarding the same are expressly forbidden. It is submitted under a confidential relationship, for a special purpose, and the recipient, by accepting this document assumes custody and agrees that this document will not be copied or reproduced in whole or in part, nor its contents revealed in any manner or to any person except for the purpose for which it was tendered, nor any special features peculiar to this design be incorporated in other projects.

<b>Code</b>	<b>Type</b>
<b>85059</b>	<b>C</b>

Sign Type	PG #:
P14R-115 (SERVICE)	5

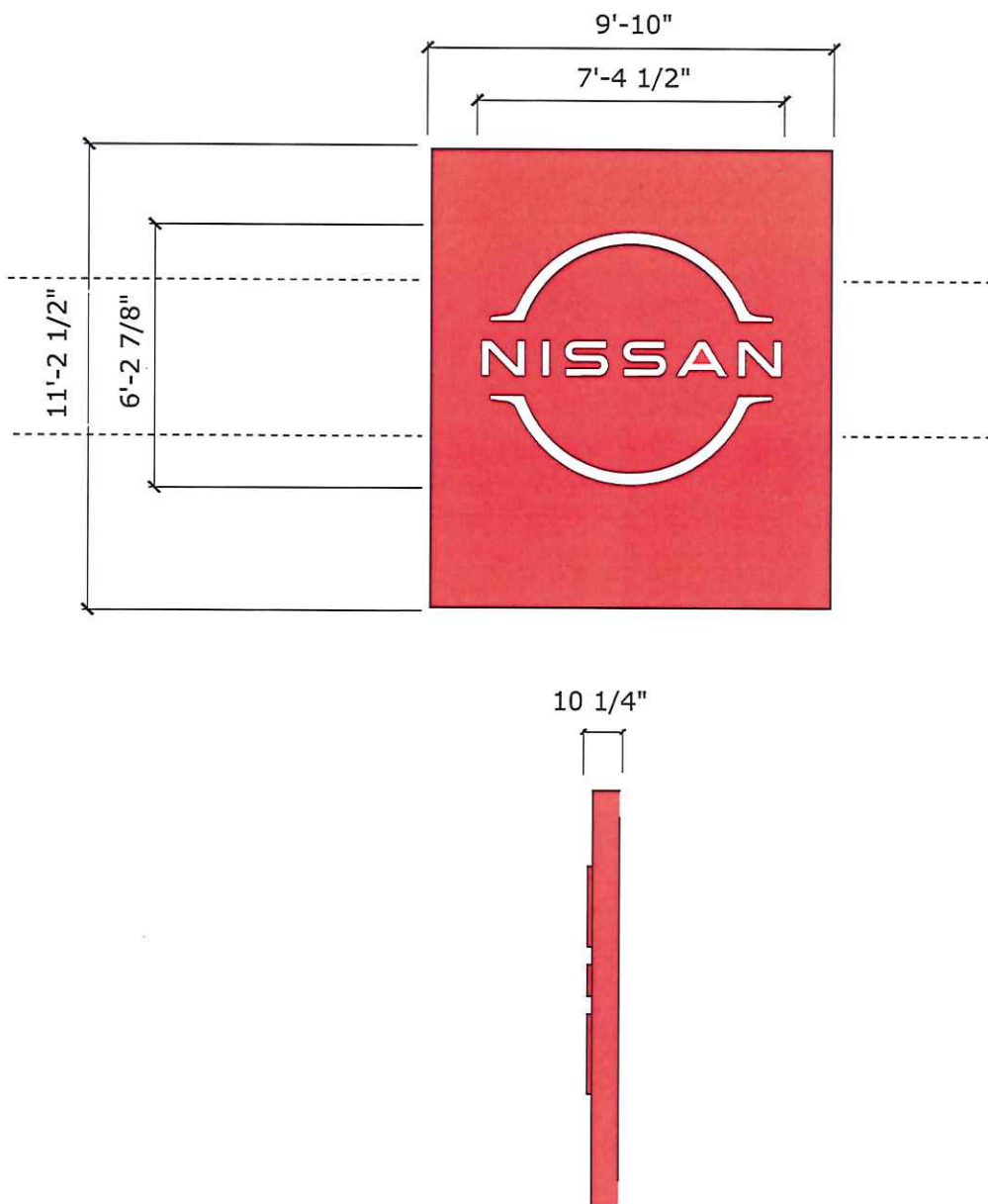


# NISSAN NORTH AMERICA

## Dealer Presentation Package



### 2. SCHEDULE OF SIGNS



<b>B</b>	SMST	Small Tablet - Slim
	110.22sf	Total of 1
	New	

# NISSAN NORTH AMERICA

## Dealer Presentation Package




### 2. SCHEDULE OF SIGNS

5'-8 1/2"

1'-2"

**Wilton**

	T43DNL	Channel Letters - Dealer Name
	6.68 sf	Total of 1
	New	

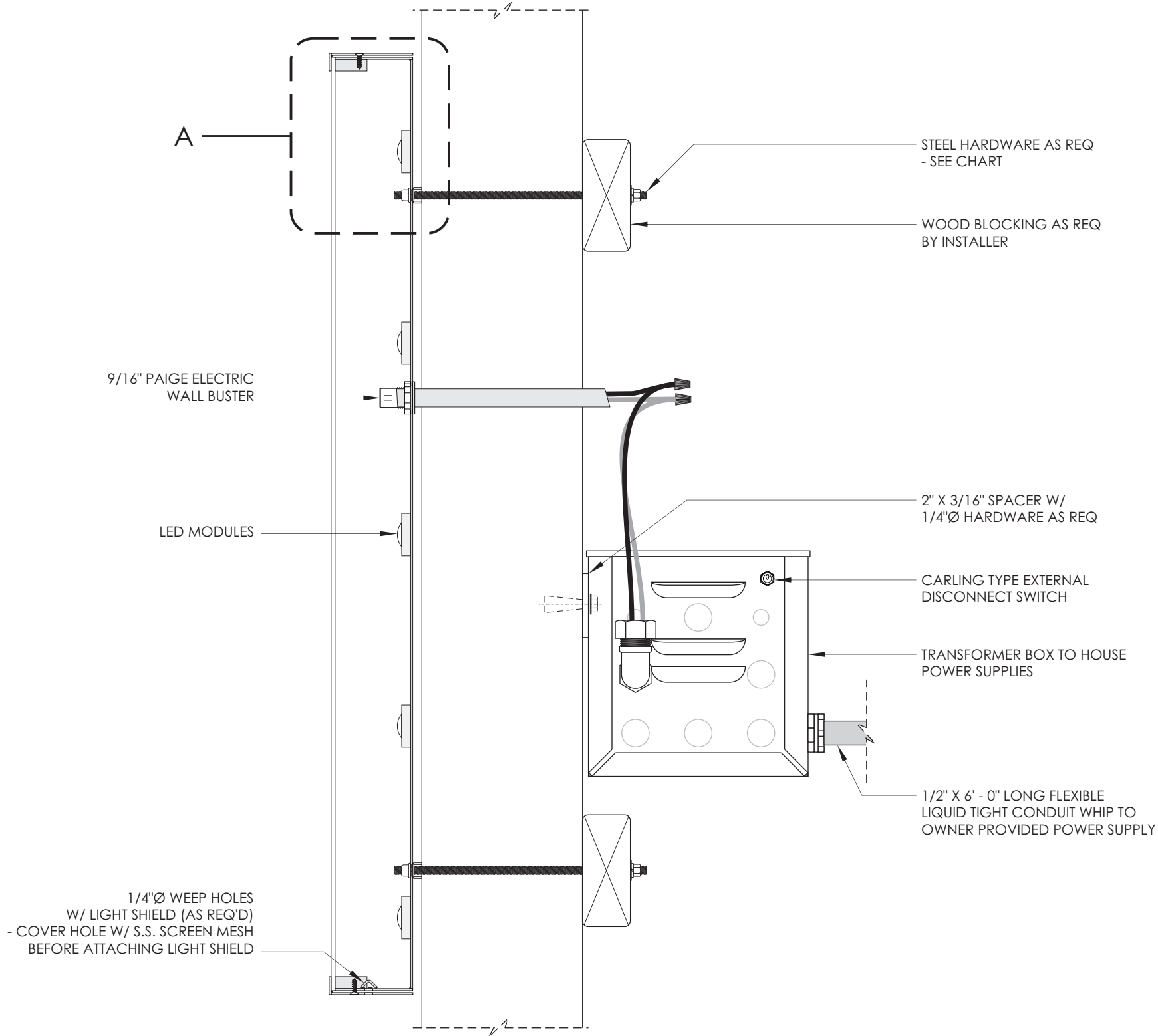
REVISIONS				
REV.	ECR NUMBER	REV CHANGE	DATE	DRAFTER
A	83493	INITIAL RELEASE	10.05.23	CAC

B

B

A

A



SECTION VIEW  
SCALE N.T.S.

MOUNTING HARDWARE  
CHART

	MASONRY	WOOD	METAL / EPIS
1/4" ZINC PLATED STEEL THREADED ROD THRU WALL	●	●	●
1/4" LAGS WITH SHIELDS	●		
1/4" LAG BOLTS		●	
1/4" TOGGLE BOLTS			●

NOTE:  
1) THREADED ROD WILL BE PROVIDED STANDARD  
- ALL OTHER HARDWARE IS TO BE PROVIDED BY THE INSTALLER AS REQ.  
2) DESIGN INTENDED FOR NOT GREATER THAN 3RD STORY MOUNTING - HIGHER ELEVATIONS REQUIRE REVIEW

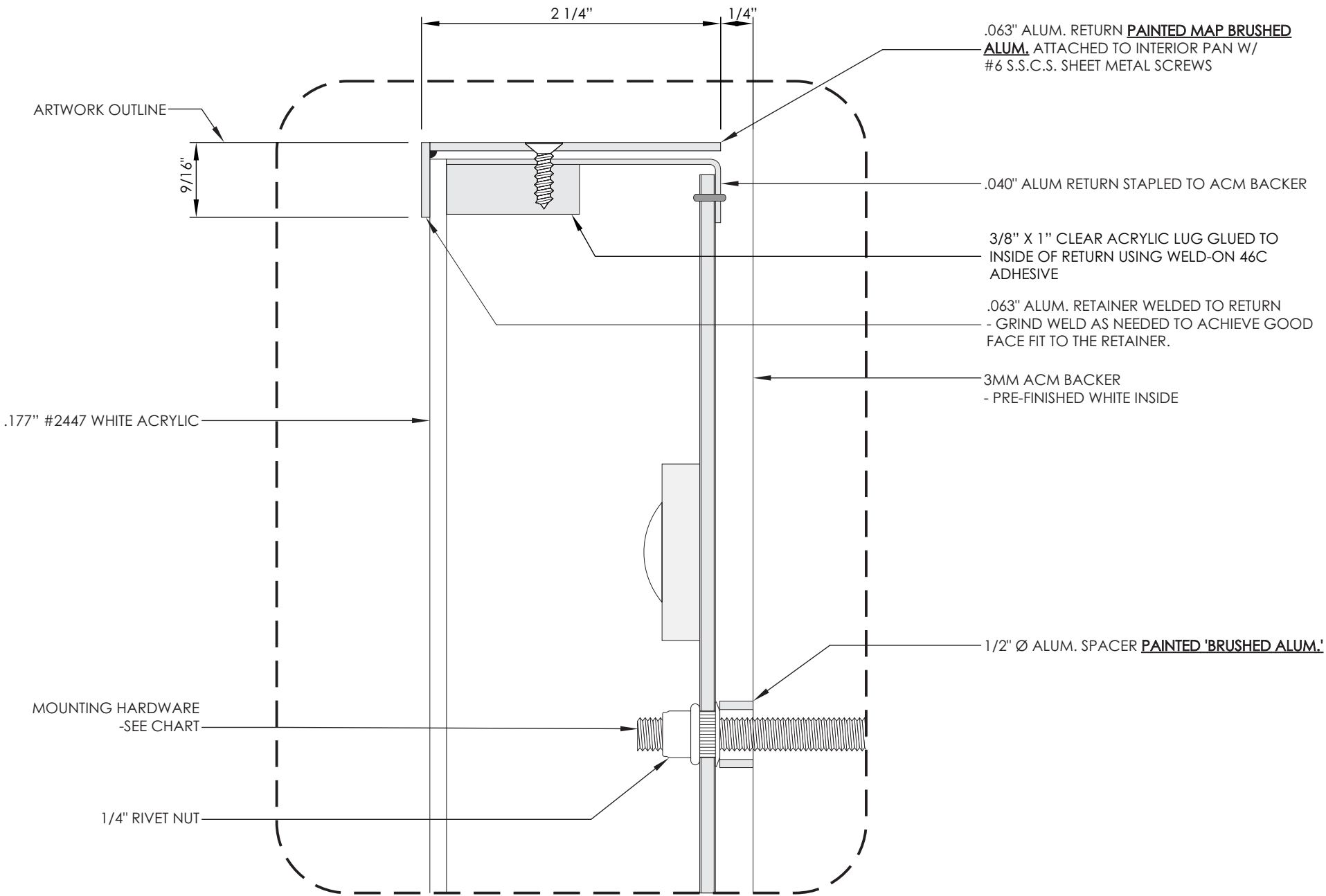
Program/Customer:		
NISSAN NRC NEXT		
Interior/Exterior:	EXTERIOR	
Sign Type:	CHANNEL LETTERS	
Engineer:	M. SMITH	
Windspeed:	115 MPH / IBC 2015	
Illumination:	ILLUMINATED	
Voltage:	120V	SCALE: 1:16




DESCRIPTION:  
SMALL DEALER NAME LETTERS

Part Number:  
83493 - SM-DNL

REVISIONS				
REV.	ECR NUMBER	REV CHANGE	DATE	DRAFTER
A	83493	INITIAL RELEASE	10.05.23	CAC



DETAIL A  
SCALE 1:1

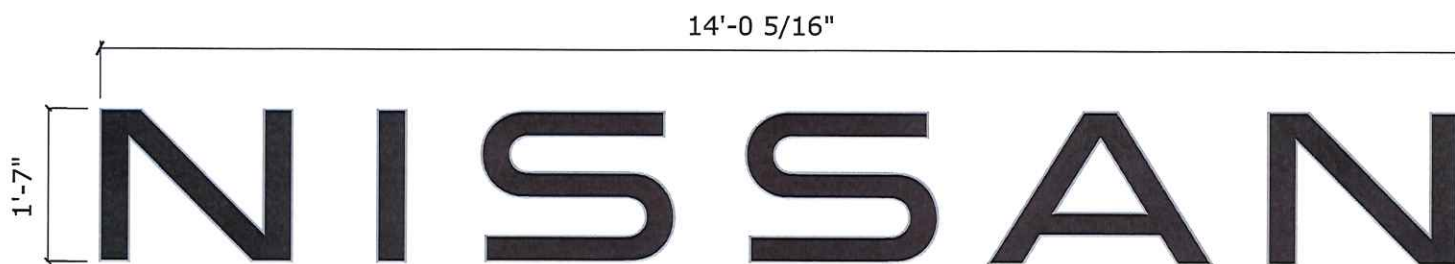
Program/Customer: NISSAN NRC NEXT			
Interior/Exterior:	EXTERIOR		
Sign Type:	CHANNEL LETTERS		
Engineer:	M. SMITH		
Windspeed:	115 MPH / IBC 2015		
Illumination:	ILLUMINATED		DESCRIPTION: SMALL DEALER NAME LETTERS
Voltage:	120V	SCALE: 1:16	Part Number: 83493 - SM-DNL

# NISSAN NORTH AMERICA

## Dealer Presentation Package



### 2. SCHEDULE OF SIGNS



D	T43NWM	Channel Letters - Nissan
	17.36 sf	Total of 1
	New	



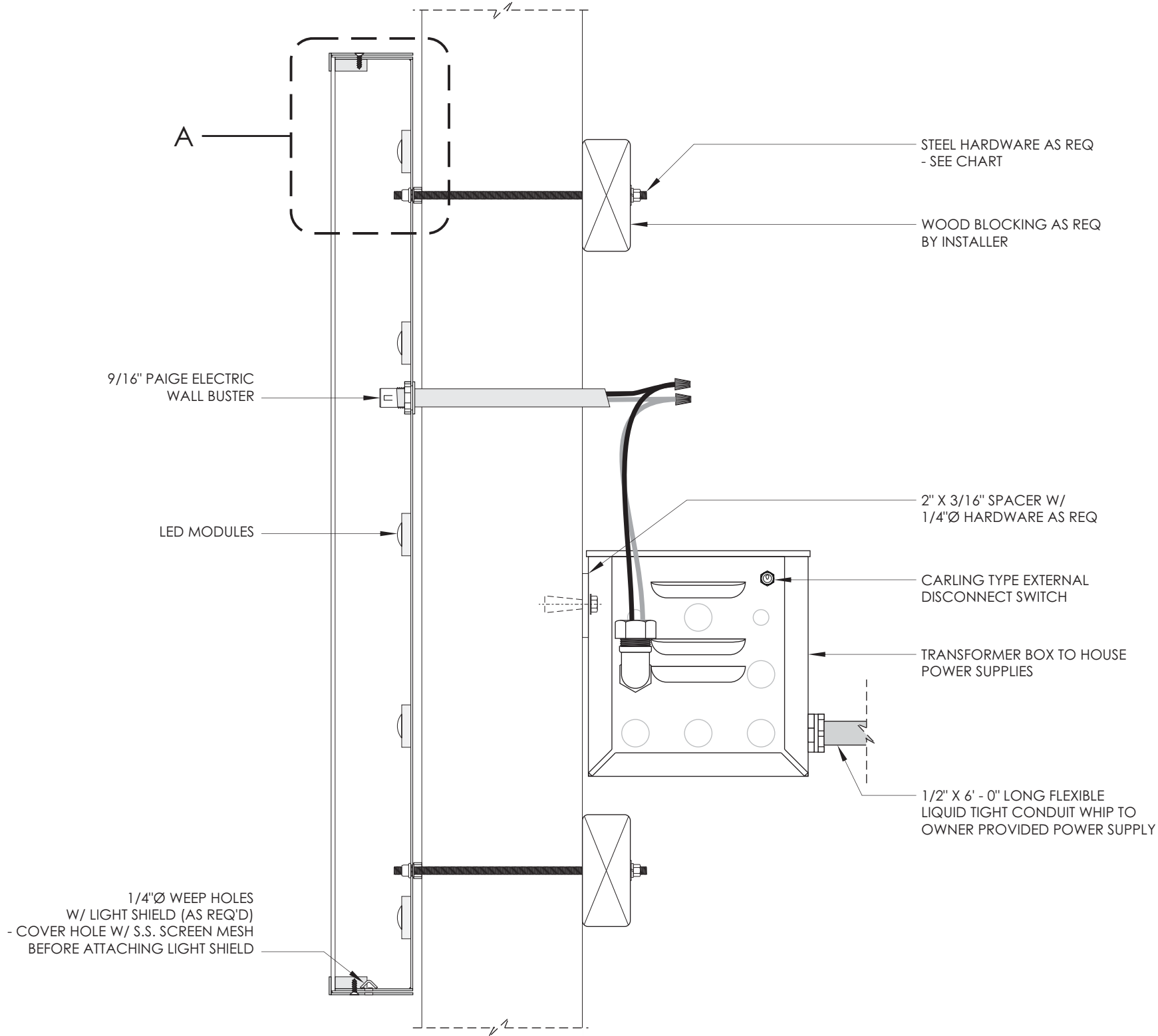
REVISIONS				
REV.	ECR NUMBER	REV CHANGE	DATE	DRAFTER
A	83493	INITIAL RELEASE	10.05.23	CAC

B

B

A

A



SECTION VIEW  
SCALE N.T.S.

MOUNTING HARDWARE  
CHART

	MASONRY	WOOD	METAL / EPIS
1/4" ZINC PLATED STEEL THREADED ROD THRU WALL	●	●	●
1/4" LAGS WITH SHIELDS	●		
1/4" LAG BOLTS		●	
1/4" TOGGLE BOLTS			●

NOTE:  
1) THREADED ROD WILL BE PROVIDED STANDARD  
- ALL OTHER HARDWARE IS TO BE PROVIDED BY THE INSTALLER AS REQ.  
2) DESIGN INTENDED FOR NOT GREATER THAN 3RD STORY MOUNTING - HIGHER ELEVATIONS REQUIRE REVIEW

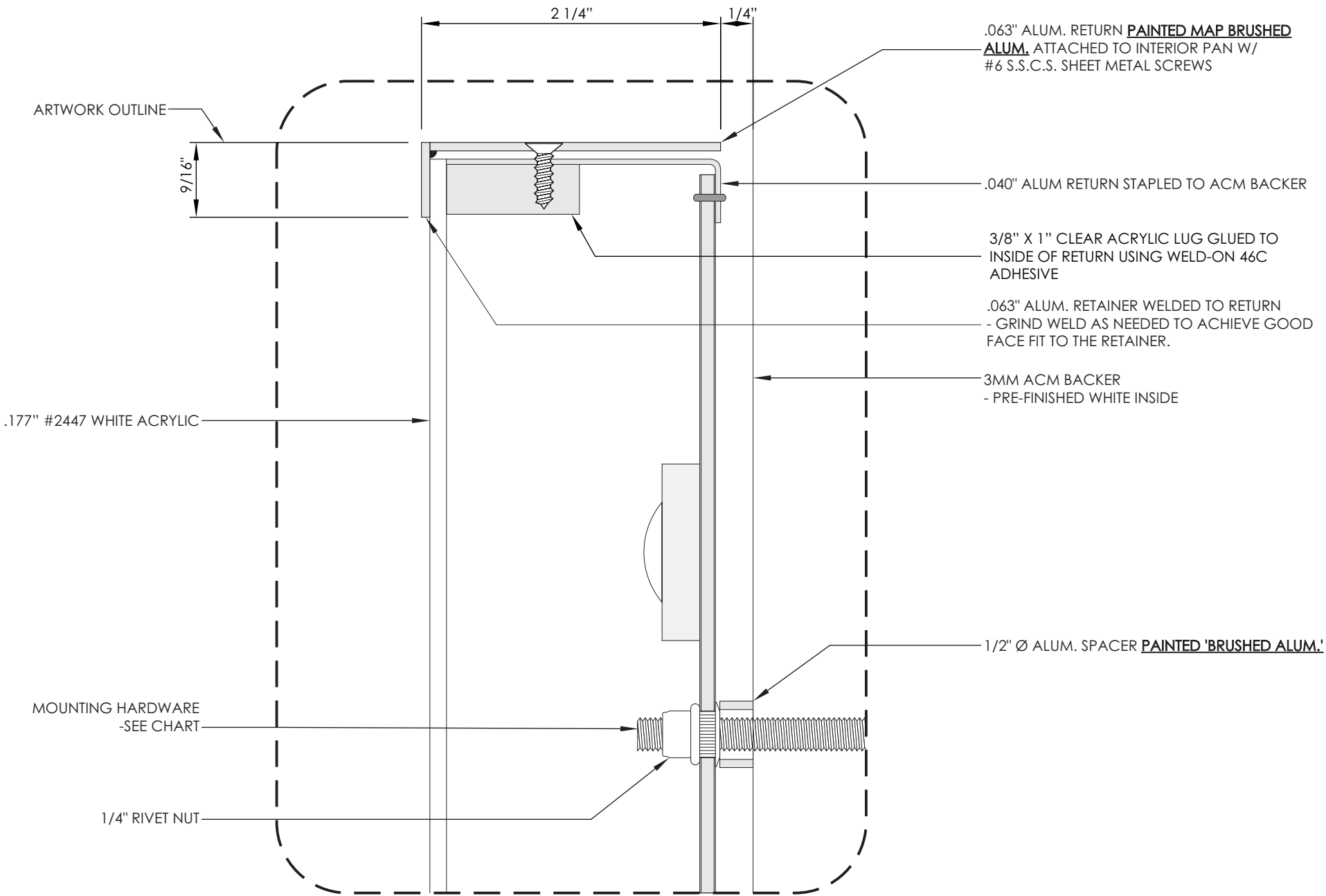
Program/Customer:		
NISSAN NRC NEXT		
Interior/Exterior:	EXTERIOR	
Sign Type:	CHANNEL LETTERS	
Engineer:	M. SMITH	
Windspeed:	115 MPH / IBC 2015	
Illumination:	ILLUMINATED	
Voltage:	120V	SCALE: 1:16




DESCRIPTION:  
SMALL DEALER NAME LETTERS

Part Number:  
83493 - SM-DNL

REVISIONS				
REV.	ECR NUMBER	REV CHANGE	DATE	DRAFTER
A	83493	INITIAL RELEASE	10.05.23	CAC



DETAIL A  
SCALE 1:1

Program/Customer: NISSAN NRC NEXT			
Interior/Exterior:	EXTERIOR		
Sign Type:	CHANNEL LETTERS		
Engineer:	M. SMITH		
Windspeed:	115 MPH / IBC 2015		
Illumination:	ILLUMINATED		DESCRIPTION: SMALL DEALER NAME LETTERS
Voltage:	120V	SCALE: 1:16	Part Number: 83493 - SM-DNL

NISSAN NORTH AMERICA  
Dealer Presentation Package



2. SCHEDULE OF SIGNS



<div>E</div>	T43DNL	Channel Letters - Dealer Name "White"
	6.68 sf	Total of 1
	New	

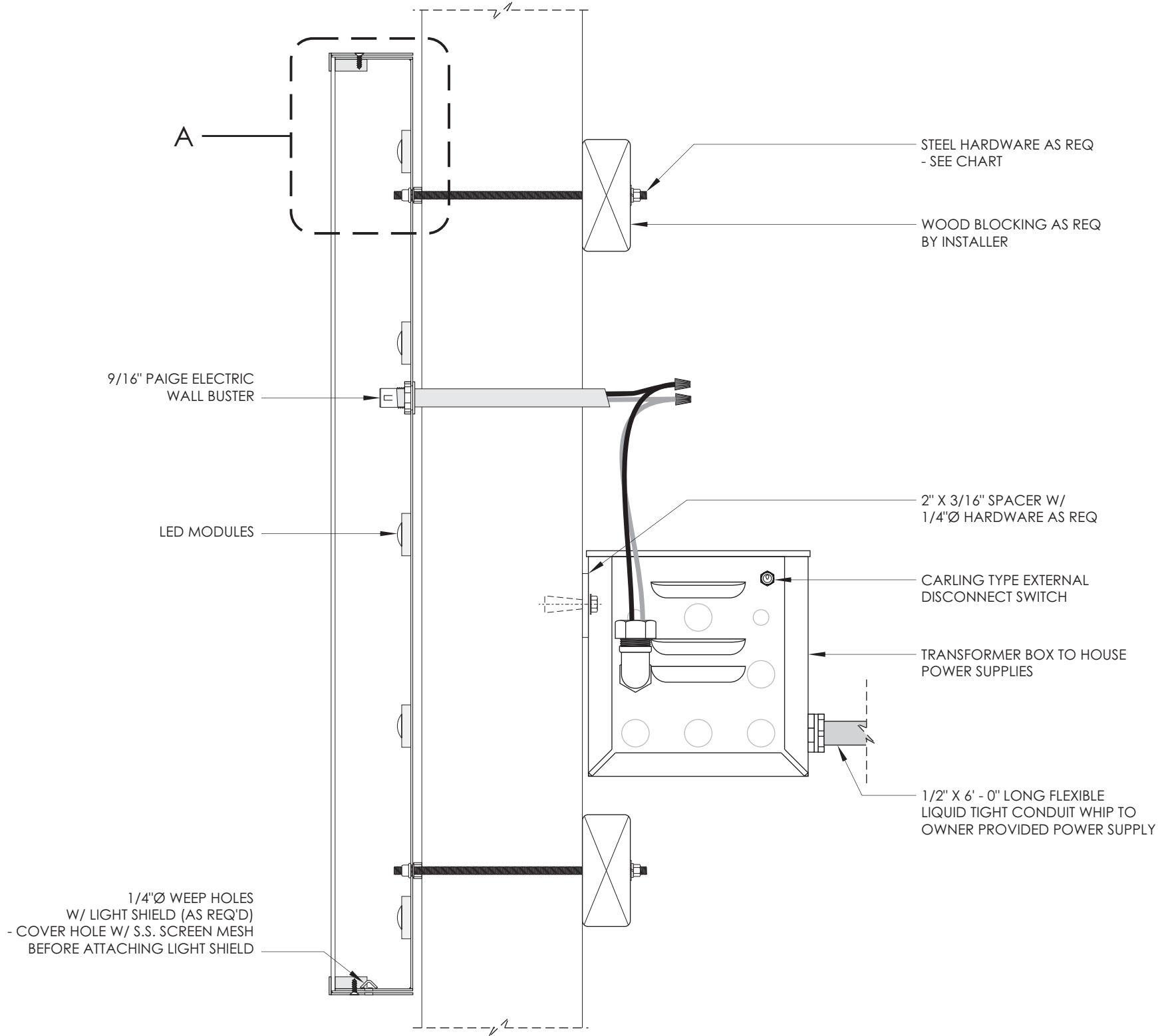
REVISIONS				
REV.	ECR NUMBER	REV CHANGE	DATE	DRAFTER
A	83493	INITIAL RELEASE	10.05.23	CAC

B

B

A

A



SECTION VIEW  
SCALE N.T.S.

MOUNTING HARDWARE  
CHART

	MASONRY	WOOD	METAL / EPIS
1/4" ZINC PLATED STEEL THREADED ROD THRU WALL	●	●	●
1/4" LAGS WITH SHIELDS	●		
1/4" LAG BOLTS		●	
1/4" TOGGLE BOLTS			●

NOTE:  
1) THREADED ROD WILL BE PROVIDED STANDARD  
- ALL OTHER HARDWARE IS TO BE PROVIDED BY THE INSTALLER AS REQ.  
2) DESIGN INTENDED FOR NOT GREATER THAN 3RD STORY MOUNTING - HIGHER ELEVATIONS REQUIRE REVIEW

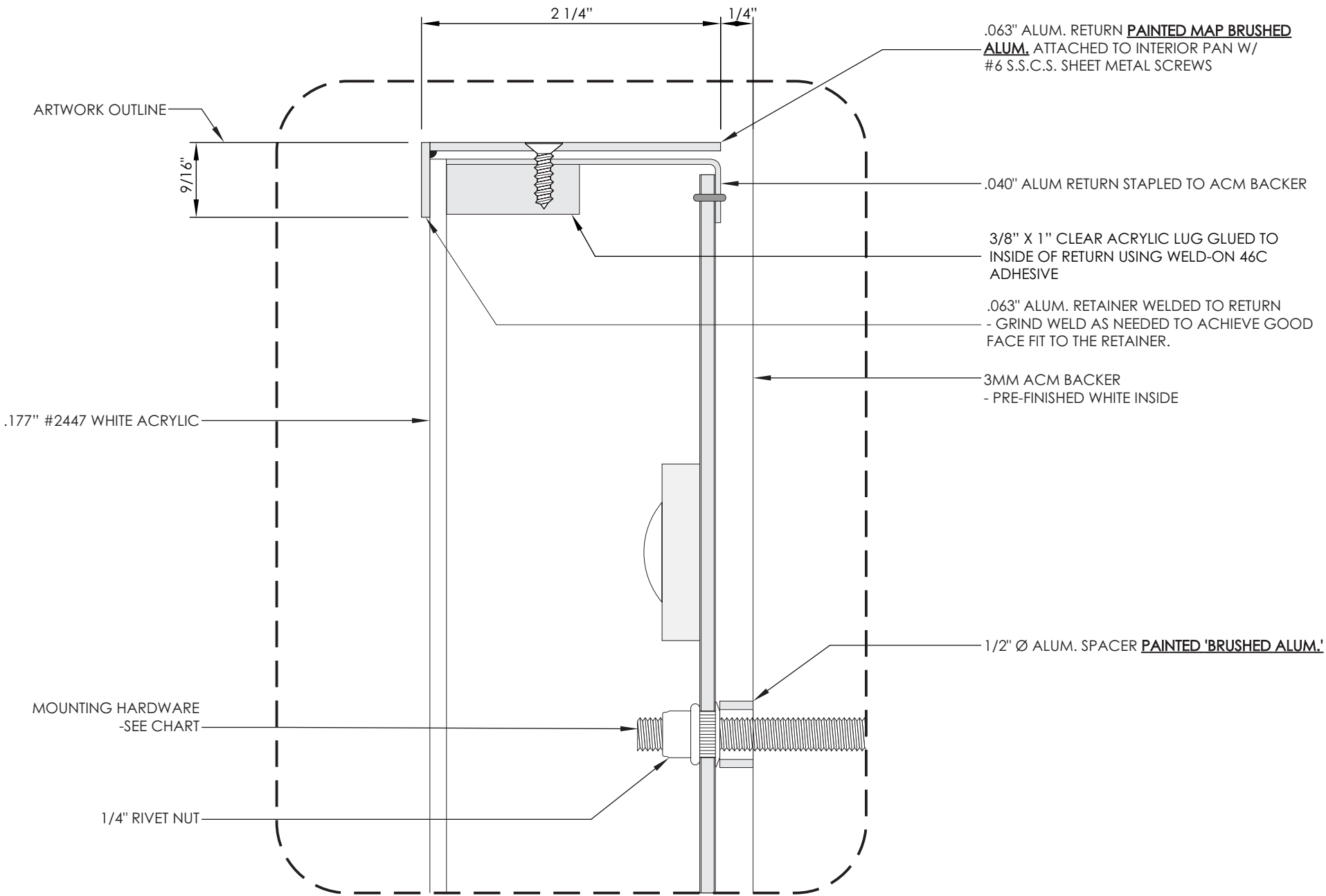
Program/Customer:		
NISSAN NRC NEXT		
Interior/Exterior:	EXTERIOR	
Sign Type:	CHANNEL LETTERS	
Engineer:	M. SMITH	
Windspeed:	115 MPH / IBC 2015	
Illumination:	ILLUMINATED	
Voltage:	120V	SCALE: 1:16




DESCRIPTION:  
SMALL DEALER NAME LETTERS

Part Number:  
83493 - SM-DNL

REVISIONS				
REV.	ECR NUMBER	REV CHANGE	DATE	DRAFTER
A	83493	INITIAL RELEASE	10.05.23	CAC



DETAIL A  
SCALE 1:1

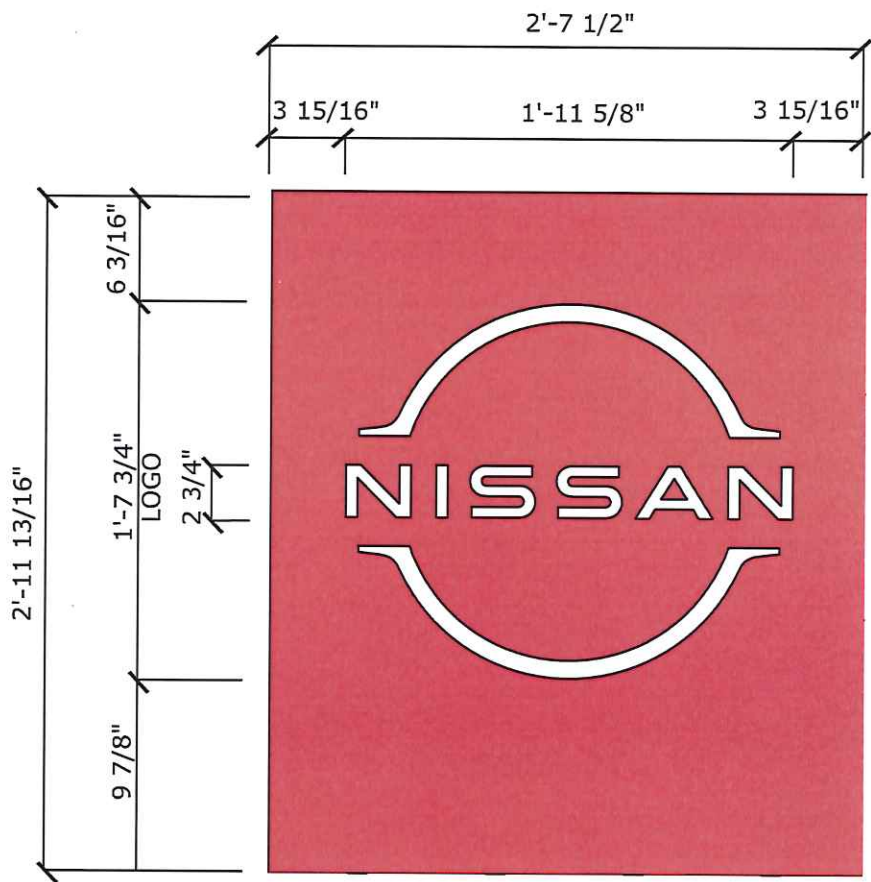
Program/Customer: NISSAN NRC NEXT			
Interior/Exterior:	EXTERIOR		
Sign Type:	CHANNEL LETTERS		
Engineer:	M. SMITH		
Windspeed:	115 MPH / IBC 2015		
Illumination:	ILLUMINATED		DESCRIPTION: SMALL DEALER NAME LETTERS
Voltage:	120V	SCALE: 1:16	Part Number: 83493 - SM-DNL



NISSAN NORTH AMERICA  
Dealer Presentation Package



2. SCHEDULE OF SIGNS

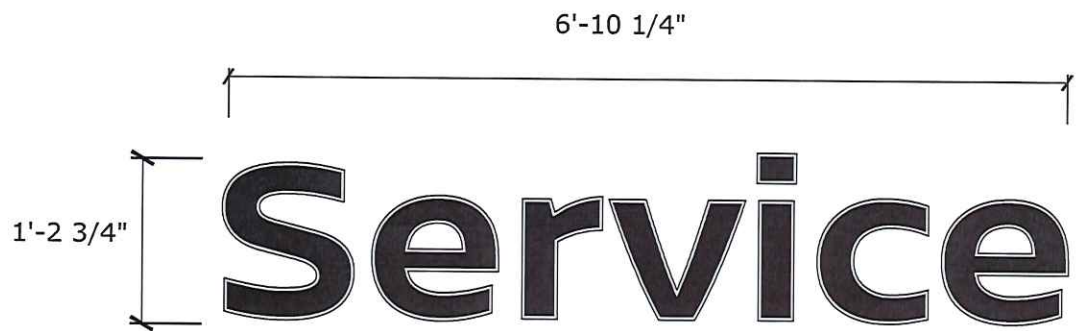


F	INT-TAB	Interior Tablet
	7.83 sf	Total of 1
	New	

NISSAN NORTH AMERICA  
Dealer Presentation Package



2. SCHEDULE OF SIGNS



G	SMSS	Channel Letters - Service
	8.35 sf	Total of 1
	New	

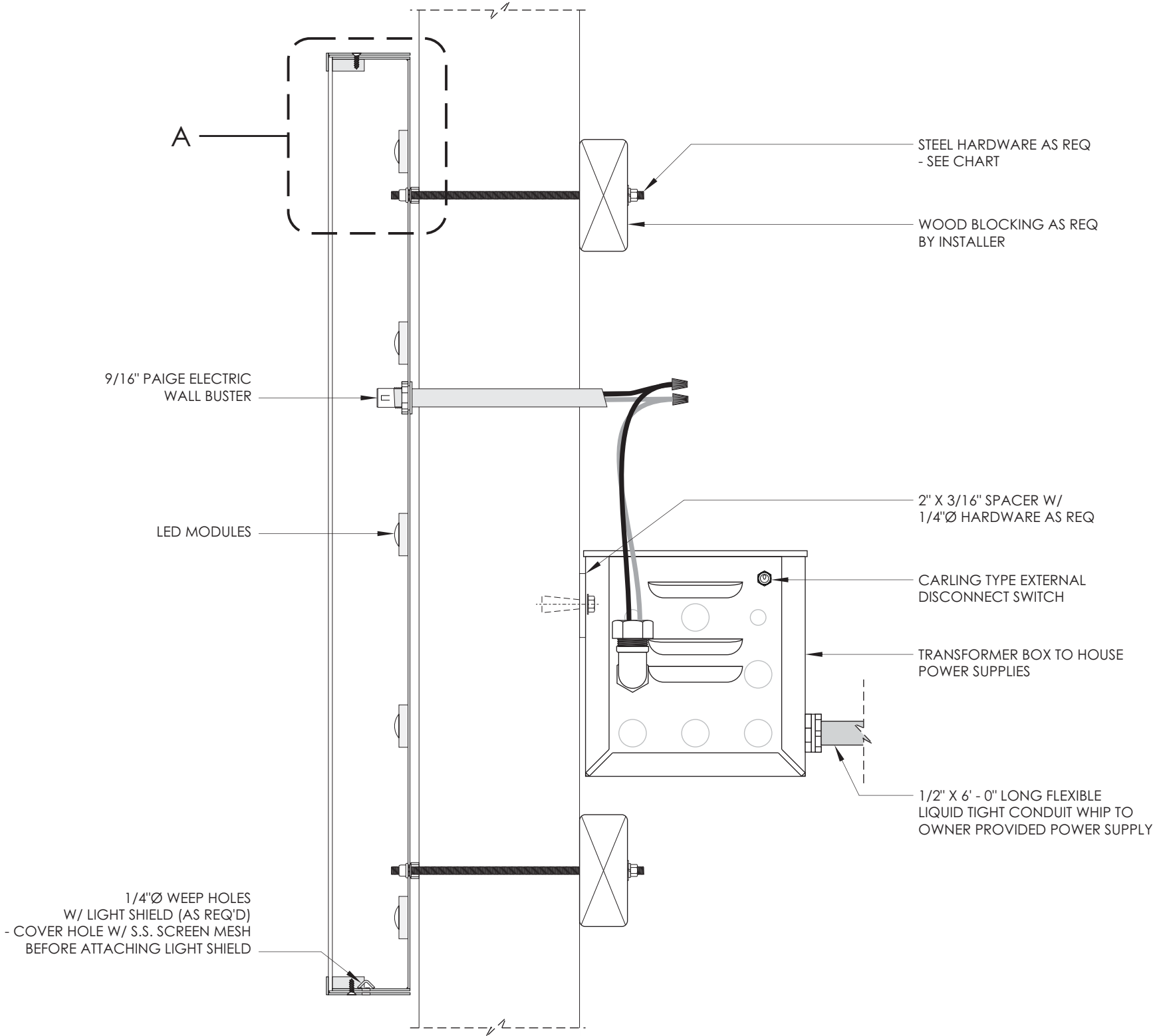
REVISIONS				
REV.	ECR NUMBER	REV CHANGE	DATE	DRAFTER
A	83493	INITIAL RELEASE	10.05.23	CAC

B

B

A

A



SECTION VIEW  
SCALE N.T.S.

MOUNTING HARDWARE  
CHART

	MASONRY	WOOD	METAL / EPIS
1/4" ZINC PLATED STEEL THREADED ROD THRU WALL	●	●	●
1/4" LAGS WITH SHIELDS	●		
1/4" LAG BOLTS		●	
1/4" TOGGLE BOLTS			●

NOTE:  
1) THREADED ROD WILL BE PROVIDED STANDARD  
- ALL OTHER HARDWARE IS TO BE PROVIDED BY THE INSTALLER AS REQ.  
2) DESIGN INTENDED FOR NOT GREATER THAN 3RD STORY MOUNTING - HIGHER ELEVATIONS REQUIRE REVIEW

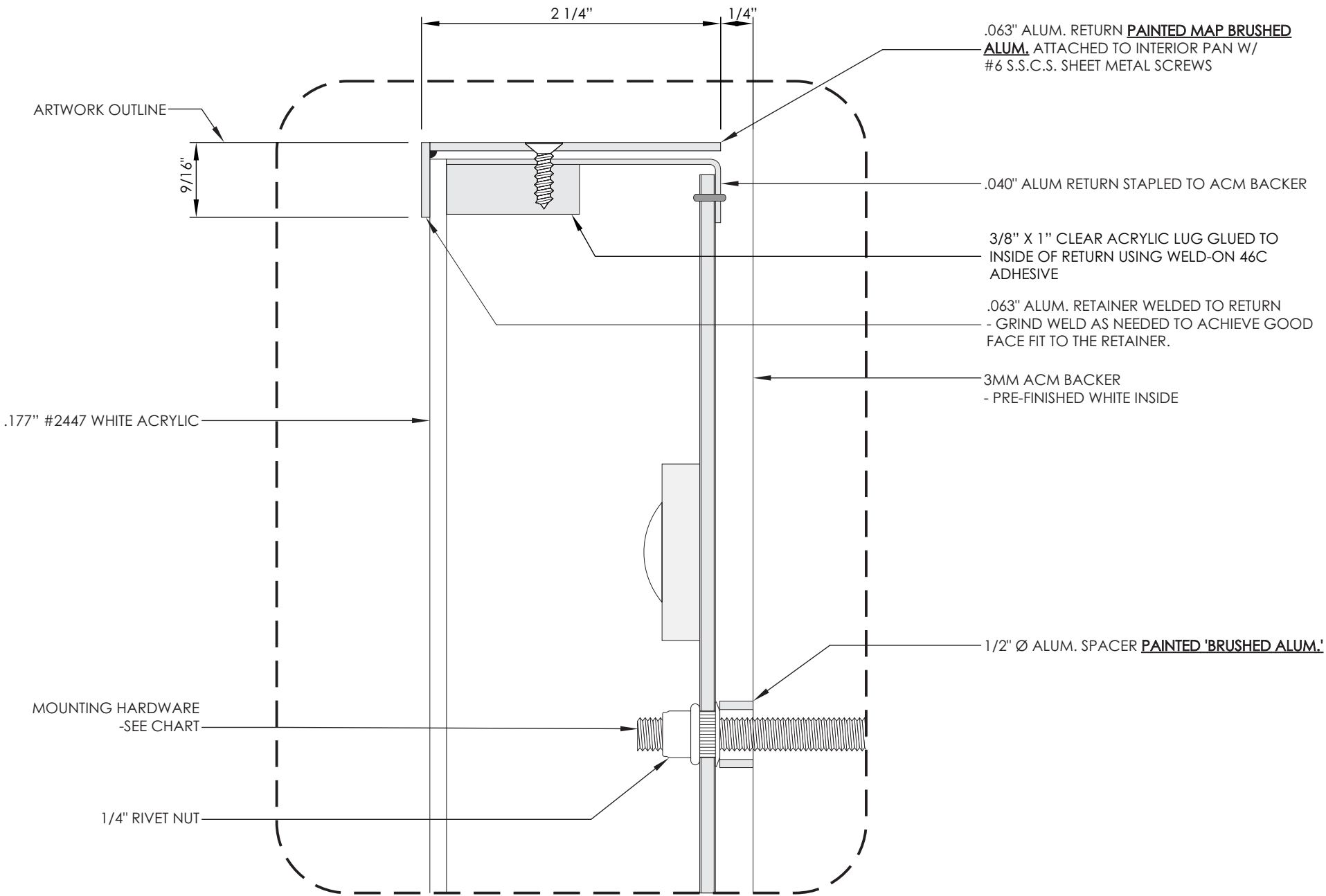
Program/Customer:			NISSAN NRC NEXT	
Interior/Exterior:	EXTERIOR			
Sign Type:	CHANNEL LETTERS			
Engineer:	M. SMITH			
Windspeed:	115 MPH / IBC 2015			
Illumination:	ILLUMINATED			
Voltage:	120V	SCALE: 1:16		




DESCRIPTION:  
SMALL DEALER NAME LETTERS

Part Number:  
83493 - SM-DNL

REVISIONS				
REV.	ECR NUMBER	REV CHANGE	DATE	DRAFTER
A	83493	INITIAL RELEASE	10.05.23	CAC



DETAIL A  
SCALE 1:1

Program/Customer: NISSAN NRC NEXT			
Interior/Exterior:	EXTERIOR		
Sign Type:	CHANNEL LETTERS		
Engineer:	M. SMITH		
Windspeed:	115 MPH / IBC 2015		
Illumination:	ILLUMINATED		DESCRIPTION: SMALL DEALER NAME LETTERS
Voltage:	120V	SCALE: 1:16	Part Number: 83493 - SM-DNL



# NRC NEXT Slim Tablet Sign Installation Manual



This manual is to be used in conjunction with detailed installation drawings provided by AGI

# Before Installation

- Prior to install, installer to complete pre-install inspection per **Pre-Con AGI document**. Verify the threaded rods match the **AGI's CAD Overlays** and the template is installed with a water proof junction box located on right side of aluminum spacer (see example below).
- Installer **MUST** coordinate with the dealership regarding the setup of equipment, movement of cars, or any other site specific item that will expedite installation.
- Approved permits, up to date drawings and Brand Book should be on site at all times during installation.
- Receive and inspect truck. Take photos and notate any damage and missing items on BOL and notify AGI PM IMMEDIATELY.



# Recommended Equipment

- Power tools - Drill, Saws
- Crane (based off of sign weight)-1 operator
- Bucket truck- 2 operators
- Tag lines 30' long each



# After Installation

- Complete Installer Checklist.
- Invoice, photos, checklist, and sign off due to AGI within 24hrs. of completion.

# Offloading / Shipping Stand Removal



Step 1: Off load tablet from truck and set onto parking lot using 30' lifting straps.



Step 2: While still supported by the crane, detach the angled ship stand assembly and save hardware.



Step 3: Lower tablet and primary ship stand to ground. Remove straps from ship stand and secure straps to lifting eye hooks at top of red tablet.



Step 4: Lift upright. Using crane, unbolt shipping stand from tablet frame (remove hardware and set aside). Add tag lines to left and right side of tablet.



Step 5: Clear pathway and arrange crew for installation to the facade. Use tag lines to assist with guidance.



## Installation - Slim Tablet



Step 6: Lift and carefully bring tablet to facade and make the electrical connection prior to setting onto the installed template. Crew members use taglines to guide.



Step 7: Secure all 4 tablet mounting angles with 2 bolts each. Ensure that the tablet is level with the parapet and centered over the doors.

**BOLTS SHOULD LINE UP. IF NOT, PLEASE CONTACT PM ASAP.**

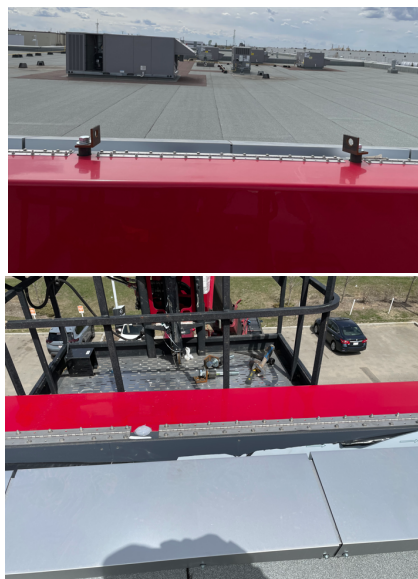


Step 8: Measure at least 4-5 points on each side of the tablet to ensure the cut will be clean and accurate to cover the gap. Cut each side of tablet's ACM trim.

**PLEASE NOTE: IF TABLET SITS OVER GLASS, WE ARE TO INSTALL ONLY WHERE THERE BUILDING ACM. TABLET WILL SIT OVER GLASS GLAZING.**



Step 9: Install ACM trim cap using painted tek screws.



Step 10: Remove lift eye hooks and silicone hole.

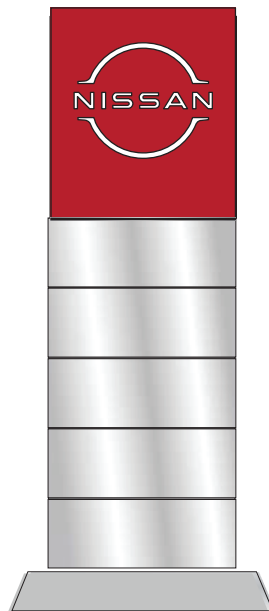


Step 12: Remove protective wrap. Ensure that the sign properly illuminates.





# NRC NEXT Pylon/Monument-Retro Sign Installation Manual



This manual is to be used in conjunction with detailed site specific drawings provided by AGI

# Before Installation

- Prior to install, installer to complete Pre-Install Inspection per Pre-Con AGI document.
- Installer **MUST** coordinate with the dealership regarding the setup of equipment, movement of cars, or any other site specific item that will expedite installation.
- Approved permits, up to date drawings, and brand books should be on site at all times during installation.
- Receive and inspect truck. Take photos and notate any damage and missing items in BOL and notify AGI PM IMMEDIATELY.

# Recommended Equipment

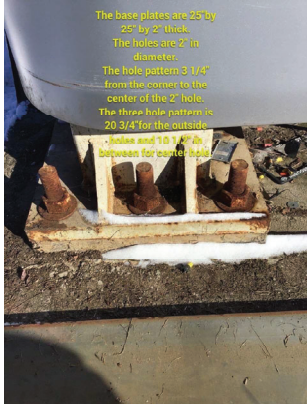
- Crane (based off of sign weight)-1 operator
- Bucket truck- 2 operators



# After Installation

- Complete installer Checklist.
- Invoice, photos, checklist, and sign off due to AGI within 24hrs. of completion.

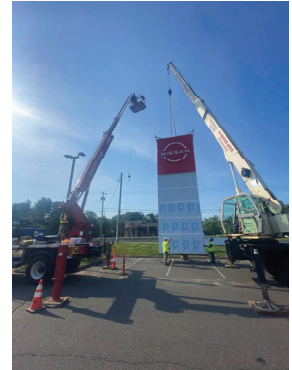
# Retro Fit Installation



Step 1: Anchor Bolt & Foundation survey to verify measurements and foundation is good use for retro-fit for new sign.



Step 2 : Lift pylon sign off of truck and set onto parking lot. At least 30 ft. long straps must be used.



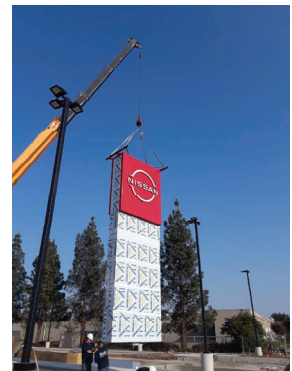
Step 3: Gently lift pylon to vertical position while still attached to shipping stands. Ensure the parking lot is protected from damage by the stands.



Step 4: Remove bottom shipping stand while sign is still rigged to crane.



Step 5: Level washer/nuts on anchor bolts. Install torque tube.



Step 6: Gently lift pylon to vertical position, still attached to shipping stands. Ensure the parking lot is protected from damage by the stands.



Step 7: Install, level sign and tighten nuts.



Step 8: Remove top shipping stand and lifting eyes. Attached fiberglass top cap with screws.



Step 9 : Remove protective wrap , make final electrical connection and install base cover (must be flush with grade and bottom of sign). Ensure access panels open and close properly