



HD25SQ411

25 Foot Square Steel Light Pole- Pro's Choice Heavy Duty, 4 Inch Wide, 11 Gauge

Job: _____

Job Site: _____ State: _____ Client Name: _____

Notes: _____ Approvals: _____ Date: _____

Product Description:

Pole Top Options: A removable pole cap is provided if the pole is drilled for attaching light fixtures. The drill pattern and drill orientation needs to be provided by the customer unless Energy Light fixtures are used for the project. If tenon option is selected, a 2-3/8 inch diameter tenon with 4 inch length is provided.

Pole Shaft: Electro-welded ASTM-A500 Grade C steel tubing with a minimum yield strength of 50,000 psi is used to fabricate the pole shaft.

Handhole: 3" X 6" size reinforced handhole is located at 12 inches from the base. Ground lug is included.

Finish: Commercial grade, super durable powder coat finish.
Dark Bronze, White, Black, Gray and Green colors are provided at no extra charge.
Other colors and custom color options are available at a surcharge.

Anchor Bolts: A set of 4 galvanized steel anchor bolts is provided with each pole assembly. Each anchor bolt includes 2 nuts and 2 washers. Top portion of the anchor bolt is threaded for securing and leveling the pole with the provided nuts and washers. An actual size paper anchor bolt template is provided.

Bolt Circle Range: Min: 8" to Max: 11"

Standard Bolt Circle template: 11"

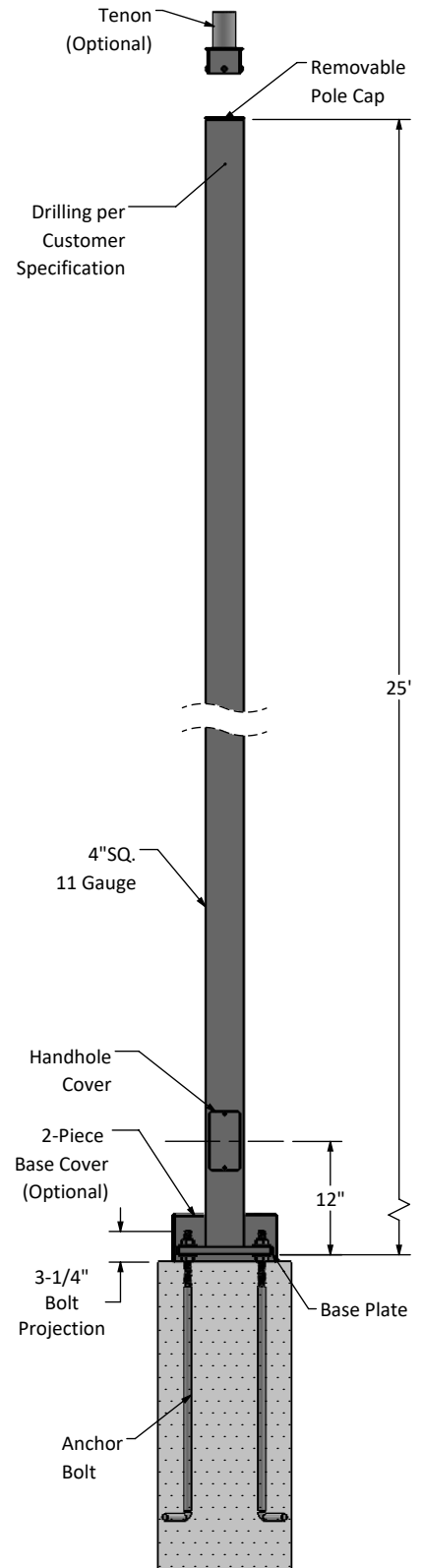
Base Cover: Two piece aluminum square base cover is available at a surcharge. Stainless steel screws are included to attach the 2 pieces together after pole installation.

Other Options: The following options are available:
Custom tenon sizes, custom colors, electric/GFI outlets, custom pole heights, additional handholes and custom base plate dimensions.

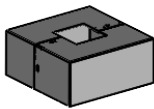
Warranty: 5 Years.

UL Listed.

Foundation design: Foundation should be designed by an engineer familiar with local soil and wind conditions as well as local code where the pole(s) will be installed.



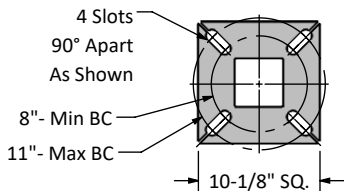
2-Piece Base Cover
(Optional)



Maximum EPA
with 1.3 Gust Factor
(ft²)

110 mph	120 mph	130 mph	140 mph	Pole Weight (lbs)
4.6	3.0	1.7	0.7	183

Base Plate



Anchor Bolt

Anchor Bolt Dim.

3/4"x30"x3"



Disclaimer: All dimensions and specifications are subject to change without any notice.
Energy Light, Inc. is not responsible for any claims arising from improper loading
(what is attached to the light pole), improper use, incorrect foundation design and/or installation.