

200 Danbury
Road LLC

Sharp Hill
Square

Raymond Morehouse House
198 & 200 Danbury Road
Wilton, Connecticut

B S A

Bennett Sullivan Associates, Inc.
Architects and Planners

Suite 201, Three Pompeaug Office Park
Southbury, Connecticut 06488
203.264.8202

General Notes

The drawing and all ideas, arrangements, designs and plans indicated thereon or represented thereby are owned by and remain the property of Bennett Sullivan Associates, Architects and Planners. No part thereof shall be utilized by any person, firm or corporation for any purpose, except with specific written permission of the firm Bennett Sullivan Associates, Architects and Planners.

Any errors or discrepancies on the drawings, shop drawings and details are to be brought to the attention of the Architect before the work has commenced.

This office of Bennett Sullivan Associates, Architects and Planners, is not responsible for field administration of this Contract Drawing. The Contractor is solely responsible for the field interpretation of the drawings and the notes pertaining to this drawing.

BUILDING
PERMIT
FOR CONSTRUCTION

Revisions

No.	Date	Description	Initials
1	01/04/2021	Exterior Door Rev.	JHD

Drawing Title

Proposed
Exterior Elevations

Scale 1/4" = 1'-0"

Date June 2020

Drawn By CGM

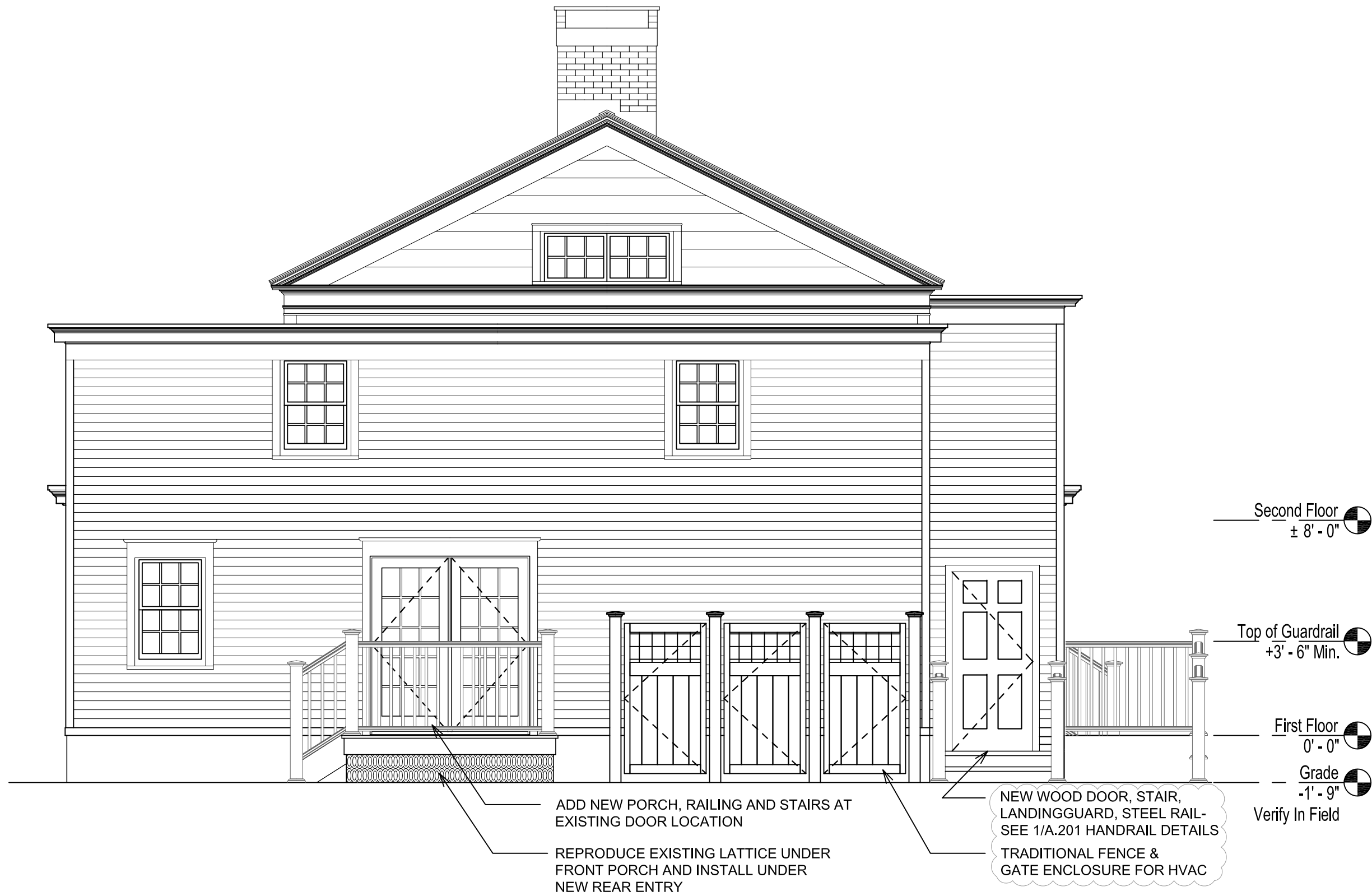
Checked By KTB

BSA Job Number 18011

Drawing Number

A.200

Bennett Sullivan Associates, Inc. © Copyright 2021



1 PROPOSED REAR ELEVATION

A.200 SCALE: 1/4" = 1'-0" NOTE: Any exterior work (excluding interior) shall comply with "The Secretary of the Interior's Standards for Rehabilitation" <https://www.nps.gov/tps/standards/rehabilitation/rehab/index.htm>



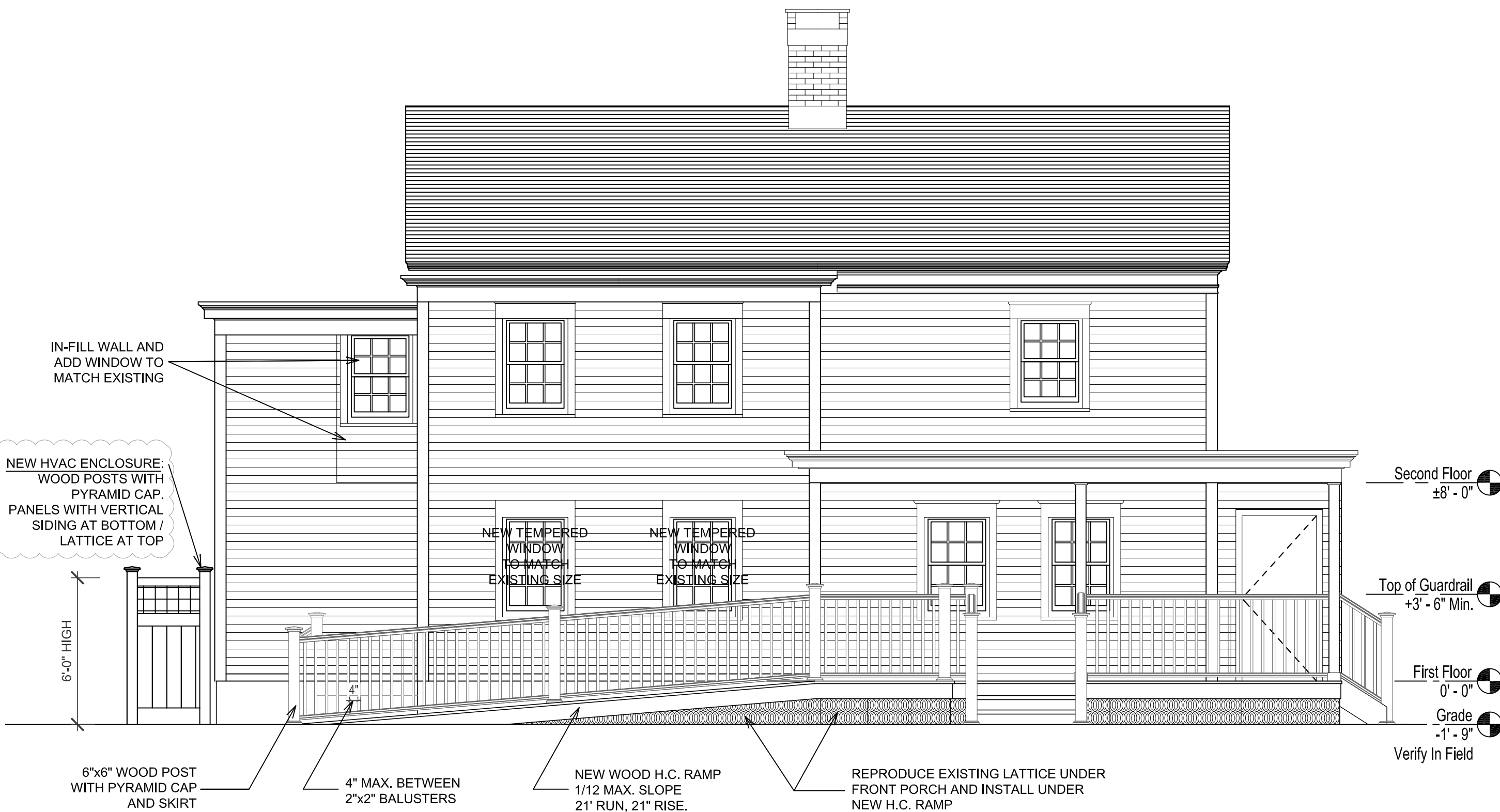
2 PROPOSED FRONT ELEVATION

A.200 SCALE: 1/4" = 1'-0" NOTE: Any exterior work (excluding interior) shall comply with "The Secretary of the Interior's Standards for Rehabilitation" <https://www.nps.gov/tps/standards/rehabilitation/rehab/index.htm>



3 PROPOSED SIDE ELEVATION

A.200 SCALE: 1/4" = 1'-0" NOTE: Any exterior work (excluding interior) shall comply with "The Secretary of the Interior's Standards for Rehabilitation" <https://www.nps.gov/tps/standards/rehabilitation/rehab/index.htm>



4 PROPOSED LEFT SIDE ELEVATION

A.200 SCALE: 1/4" = 1'-0" NOTE: Any exterior work (excluding interior) shall comply with "The Secretary of the Interior's Standards for Rehabilitation" <https://www.nps.gov/tps/standards/rehabilitation/rehab/index.htm>