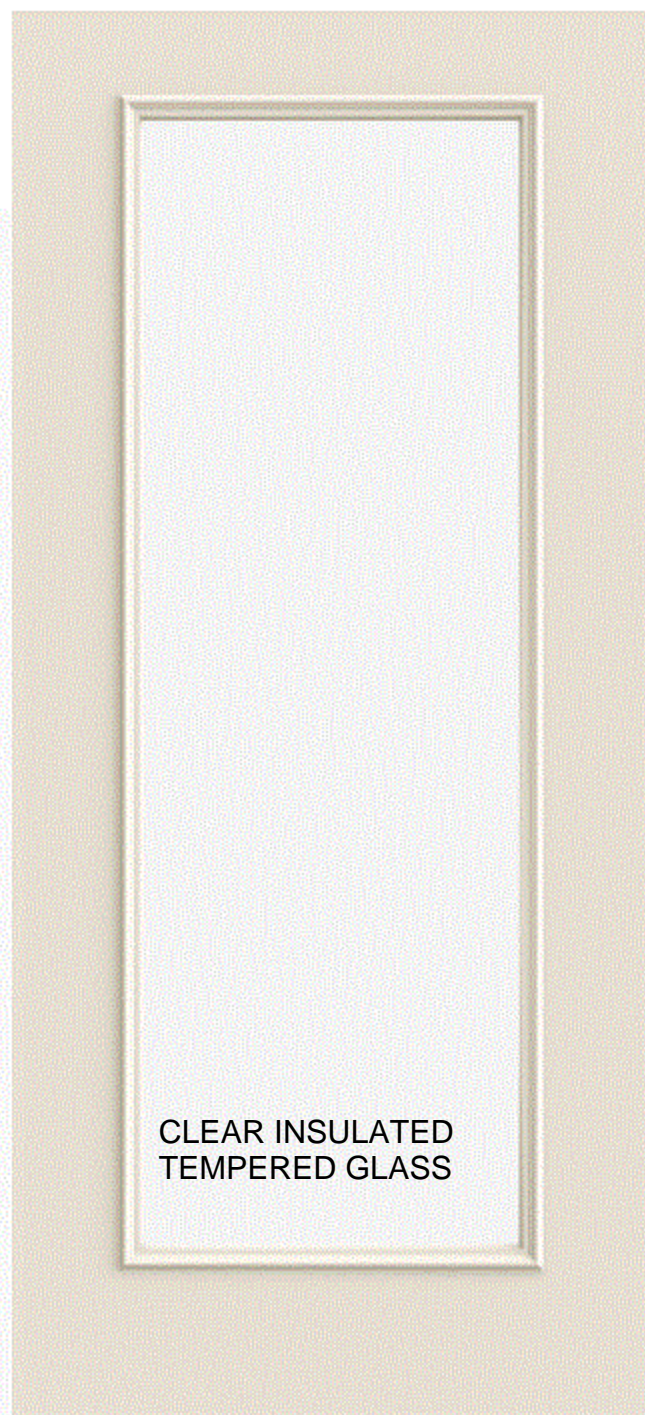


# Smooth-Pro™ Fiberglass Exterior Door: Full View

JELD-WEN



CLEAR INSULATED  
TEMPERED GLASS

## Model Overview

### PROJECT TYPE

New construction and replacement

### COLORS & FINISHES

1 Finish Option  
34 Paint Options  
11 Stain Options

### CONSTRUCTION

ADA Requirements  
Impact Resistant Doors  
Smooth-Pro Construction





Passion for Homes and Families



THE  
**PRESTIGE**  
SERIES

Casements & Awnings | Bays & Bows

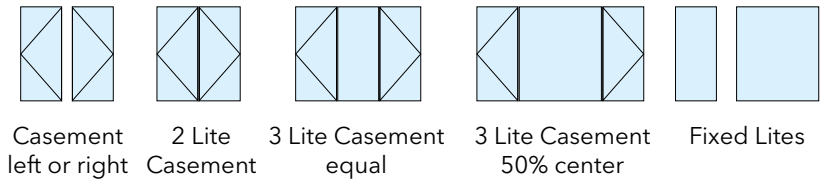


# STANDARD FEATURES

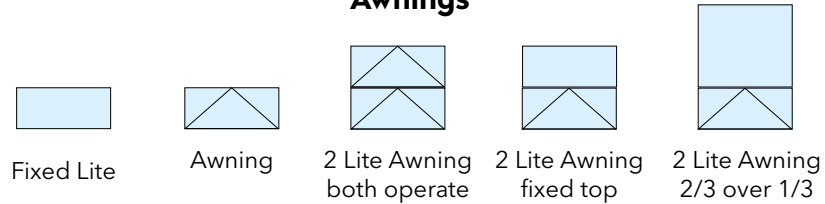
- 1. Fusion welded frame and sash corners** are secure, weathertight and never pull apart.
- 2. Multi-chambered vinyl frame and sash** are energy efficient, maintenance-free and last a lifetime.
- 3. Beveled sash exterior** gracefully accents every architectural style.
- 4. Dual paned IntelliGlass high performance insulated glass** produces exceptional energy performance.
- 5. Intercept warm-edge spacer system** has proven seal integrity and conducts less heat and cold than other systems.
- 6. Color-matched compression seals** are foam filled and create a water and weathertight seal around the entire opening on both the frame and the sash.
- 7. Premium operating hardware** effortlessly handles the weight of even the heaviest sashes with smooth, quiet operation.
- 8. Sealed operator housing and protected gear drive** minimizes contaminants from affecting operation.
- 9. Patented laser-cut gear teeth** are hardened for superior strength.
- 10. Fold-down crank handle** subtly nests into the operator housing to prevent interference with window treatments.
- 11. Sashes open a full 90 degrees** for both maximum ventilation and for cleaning both sides of the glass from inside the home.
- 12. Multi-point locking system** secures the sash tightly into the frame in at least three locking locations.
- 13. Sequential lock operation** assists sash pull in for effortless locking of even the tallest windows.
- 14. Single lever lock handle** actuates the locking system with an audible click to signify open/closed positions.
- 15. Color Matched Screen** with concealed retention system and UltraVue excellent visibility screen mesh.



## Casements



## Awnings



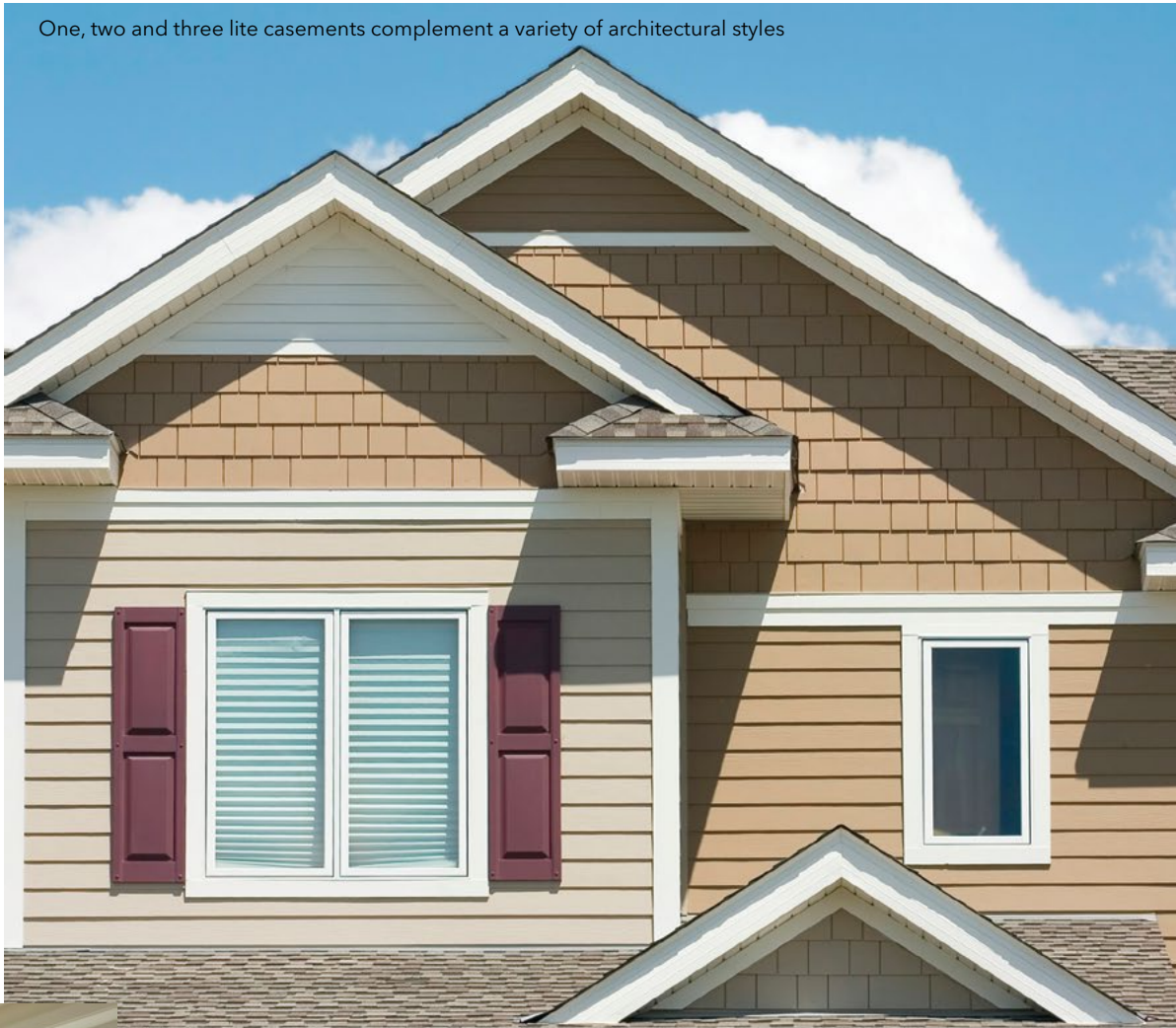
# CASEMENTS AWNINGS



Prestige Casement & Awning windows are a breeze to operate and clean. Our robust gear and aggressive tooth design allow windows to fully open with only seven turns of the elegant fold down handle. The sash opens 90 degrees to allow cleaning of both interior and exterior glass surfaces.



One, two and three lite casements complement a variety of architectural styles



Awnings and fixed lites showcase a spectacular view




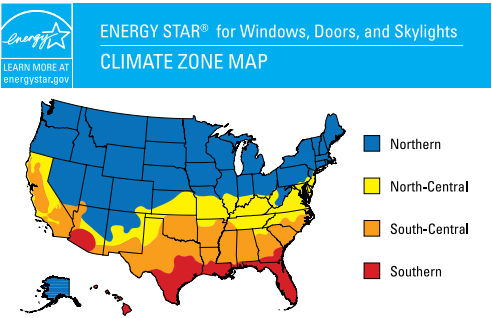


ANATOMY OF AN ENERGY EFFICIENT WINDOW



- 1. **Quality Frame Materials:** low-maintenance frame materials, like vinyl, reduce heat transfer and help to better insulate.
- 2. **Multiple Panes:** two or three panes of glass with a gas filled airspace are energy-efficient, resist impact damage and provide sound insulation.
- 3. **Low E Glass:** reflects heat and keeps heat inside in the winter and outside in the summer. UV is also reflected, protecting furnishings from fading while allowing plants to thrive.
- 4. **Gas Fill:** inert argon and krypton are more dense and insulate better than regular air.
- 5. **Warm Edge Spacers:** like Intercept or Super Spacer, keeps a window's glass panes the correct distance apart. Warm Edge Spacers insulate pane edges, reducing heat transfer through the window.

INTELLIGLASS PACKAGES		GLASS PANES	LOW-E TYPE	AIRSPACE FILLING
 high performance	All climates	2	Standard	Argon
 solar control	All climates	2	Solar	Argon
 solar control triple pane	All climates	3	Solar	Argon
 high performance triple pane	All climates	3	Standard	Argon
 supreme performance triple pane	All climates	3	Standard	Krypton



PERFORMANCE DATA

	No Grids					Energy Star	With Grids					Energy Star
	Intercept	Super Spacer	Intercept	Super Spacer	VLT		Intercept	Super Spacer	Intercept	Super Spacer	VLT	
U Value	SHGC	U Value	SHGC				U Value	SHGC	U Value	SHGC		
IntelliGlass Low E / Argon	.27	.25	.26	.25	.45	N NC SC S	.27	.23	.26	.23	.40	N NC SC S
IntelliGlass X Low E / Argon	.27	.19	.26	.19	.42	N NC SC S	.27	.18	.26	.18	.38	N NC SC S
IntelliGlass X3 Triple Pane Low E / Argon	.24	.18	.23	.18	.39	N NC SC S	.25	.17	.23	.17	.35	N NC SC S
IntelliGlass Plus Triple Pane Low E / Argon	.21	.21	.20	.21	.33	N NC SC S	.21	.19	.20	.19	.30	N NC SC S
IntelliGlass Supreme Triple Pane Low E / Krypton	.18	.21	.17	.21	.33	N NC SC S	.18	.19	.17	.19	.30	N NC SC S

Up to this size window*	Design Pressure PSF	Water Resistance PSF	Air Infiltration cfm/ft²
Casement R50 36" x 72" DS glass	50	7.5	0.03
Awning R50 48" x 24" DS glass	50	7.5	0.03
Picture R50 48" x 48" DS glass	50	7.5	0.03

The lower the **U-value**, the greater a window's resistance to heat flow and the better its insulating value.  
The lower the **SHGC**, the more a product is blocking solar heat from coming through the window.  
**VLT** - Visible Light Transmittance - lower values mean less light passing through the window.  
\* windows outside these size limits have not been structurally tested

**Intercept Spacer System**  
features a unique, one-piece, tin-plated U-channel design that creates an effective thermal barrier to help reduce conducted heat loss through the window. Its sealed, one-piece design makes Intercept spacers stronger and better at retaining insulating gas than many conventional designs.

**Super Spacer**  
Optional warm edge Super Spacer is the "no metal" upgrade to help your windows reduce energy costs. Its 100% memory foam formula stands up to a wide range of temperatures and is designed to provide outstanding UV resistance. It dramatically decreases condensation and blocks heat escape for best thermal performance.

CHOOSE YOUR PERFECT LOOK

COLORS

**Solid Colors**

White  
Tan

**Laminated Interiors**

Cavalier Oak  
Natural Oak  
Colonial Cherry  
Vintage Pecan

**Laminated Exteriors**

Tan  
Clay  
Bronze

**Exterior Finishes**

Butter  
Tan  
Clay  
Pebble  
Silver  
Terra  
Cocoa  
Chestnut  
Chocolate  
Bronze  
Black  
Forest  
Brick

GRIDS

HARDWARE FINISHES

Colonial

Perimeter

Valance

Flat, Georgian, and Pencil profiles available. Grids are color matched to window. Grids are placed between the glass and are securely locked in to place, so they'll always remain straight and true.

# WHY VINYLMAX?



**Quality First.** In our facility, we utilize the most modern manufacturing methods and technology to produce the highest quality vinyl replacement windows. This results in the best value for your home.



**Made in the USA.** Vinylmax is passionate about American manufacturing, American jobs and the American economy. That is why we source the majority of our components from other American manufacturers and fabricate our windows in our Ohio and New York factories. When you buy a Vinylmax window, you can be sure you are not only getting American quality, but also supporting and sustaining local communities.



**Our Process.** Modern homes for modern families require windows designed to aesthetically and efficiently complement them. At Vinylmax, we utilize state-of-the-art manufacturing technology to produce both energy efficient windows and patio doors with features and accessories with today's family in mind.



**Warranty.** To protect your investment and our reputation, we back our products with a Lifetime Limited Warranty so strong that it will exceed your expectations.



**Family Values.** As a family owned and operated business, we value and respect our employees and their families as well as the millions of families who have our windows in their homes.



## OUR STORY

Founded in 1982 by the Doerger family and manufacturing a mere five windows per day, the Vinylmax legacy began to unfold. As one of the very first vinyl window manufacturers in the United States, Vinylmax embraced the philosophy that quality custom windows manufactured quickly would inspire loyalty in its customers.

Today, the next generation of the Doerger family continues to embrace that philosophy. Millions of American homes are more beautiful and more energy efficient, thanks to Vinylmax windows.

THE  
**PRESTIGE**  
SERIES

**vinylmax**  
windows

2921 McBride Court  
Hamilton, OH 45011  
(800) 847-3736  
[www.vinylmax.com](http://www.vinylmax.com)

