

ASML

CAMPUS TRAFFIC FLOW SAFETY IMPROVEMENTS

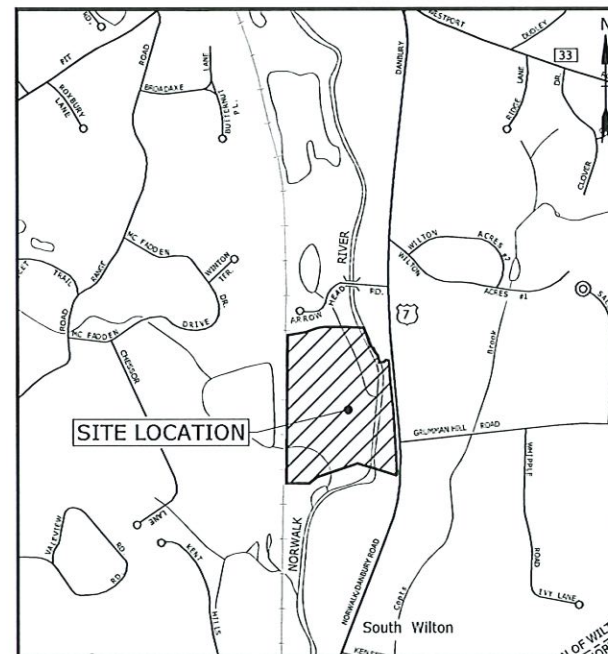
DANBURY ROAD

WILTON, CONNECTICUT

35% DESIGN DRAWINGS

APRIL 12, 2022

LIST OF DRAWINGS		
SHEET NO.	DRAWING NO.	DRAWING TITLE
GENERAL		
1	G-001	COVER SHEET
CIVIL		
2	C-000	GENERAL NOTES, ABBREVIATIONS AND LEGEND
3	C-100	EXISTING CONDITIONS PLAN
4	C-200	ROADWAY TYPICAL SECTIONS
5	C-210	ALIGNMENT PLAN
6	C-220	DRIVEWAY PROFILE
7	C-300	SITE PLAN
8	C-310	SITE PLAN ENLARGEMENT
9	C-400	GRADING PLAN
10	C-410	GRADING PLAN ENLARGEMENT
11	C-500	DRAINAGE AND UTILITY PLAN
12	C-510	DRAINAGE AND UTILITY PLAN ENLARGEMENT
13	C-600	SEDIMENT AND EROSION CONTROL PLAN
14	C-610	SEDIMENT AND EROSION CONTROL PLAN ENLARGEMENT
15	C-611	SEDIMENT AND EROSION CONTROL NOTES, NARRATIVE AND DETAILS
16	C-612	SEDIMENT AND EROSION CONTROL DETAILS
17	C-700	CROSS-SECTIONS
18	C-800	TRAFFIC OPERATIONS PLAN
19	C-900	SITE DETAILS
20	C-910	DRAINAGE DETAILS



LOCATION MAP
SCALE: 1" = 800'

PREPARED BY:

Tighe & Bond
1000 Bridgeport Avenue
Suite 320
Shelton, CT 06484
(203) 712-1100

PREPARED FOR:

ASML
ASML
77 DANBURY ROAD
WILTON, CT 06897

COMPLETE SET X SHEETS



State of Connecticut
Department of Transportation
Bridges - South Norwalk Rte. 142

EXISTING CONDITION PLAN NOTES

1. THE ACCURACY AND COMPLETENESS OF SUBSURFACE INFORMATION SHOWN ON THESE DRAWINGS IS NOT GUARANTEED. THE CONTRACTOR SHALL DETERMINE THE LOCATIONS AND ELEVATIONS OF ALL UTILITIES WHICH MAY AFFECT CONSTRUCTION OPERATIONS. THE CONTRACTOR MUST ADEQUATELY PROTECT AND SUPPORT UTILITIES AND SHALL BE RESPONSIBLE FOR ALL DAMAGE INCURRED AT NO EXPENSE TO THE OWNER. ANYONE USING UTILITY INFORMATION AND DATA PROVIDED HEREIN SHALL CONTACT "CALL BEFORE YOU DIG", 1-800-922-4455 OR WWW.CBYD.COM, 72 HOURS IN ADVANCE TO VERIFY THE LOCATION OF UTILITIES PRIOR TO STARTING CONSTRUCTION.
2. REFERENCE IS MADE TO PLAN TITLED
3. IT IS THE RESPONSIBILITY OF THE CONTRACTOR IN EVALUATING THESE PLANS TO MAKE EXAMINATIONS IN THE FIELD BY VARIOUS METHODS AND OBTAIN NECESSARY INFORMATION FROM AVAILABLE RECORDS, UTILITY COMPANIES, AND INDIVIDUALS AS TO THE LOCATION OF SUBSURFACE STRUCTURES.
4. THE WETLANDS DEPICTED ON THE PLANS HAVE BEEN FLAGGED BY RAINA VOLOVSKI PROFESSIONAL SOILS OF TIGHE & BOND.
5. IT IS THE RESPONSIBILITY OF THE CONTRACTOR TO REVIEW ALL OF THE DRAWINGS AND SPECIFICATIONS ASSOCIATED WITH THIS PROJECT WORK SCOPE PRIOR TO THE INITIATION OF CONSTRUCTION. SHOULD THE CONTRACTOR FIND A CONFLICT WITH THE DOCUMENTS RELATIVE TO THE DRAWINGS, SPECIFICATIONS OR APPLICABLE CODES, IT IS THE CONTRACTOR'S RESPONSIBILITY TO NOTIFY THE OWNER'S REPRESENTATIVE IN WRITING PRIOR TO THE START OF CONSTRUCTION. FAILURE BY THE CONTRACTOR TO NOTIFY THE OWNER'S REPRESENTATIVE SHALL CONSTITUTE ACCEPTANCE OF FULL RESPONSIBILITY BY THE CONTRACTOR TO COMPLETE THE SCOPE OF WORK AS DEFINED BY THE DRAWINGS AND IN FULL CONFORMANCE WITH REGULATIONS AND CODES.
6. VERTICAL DATUM: NAVD88

Tighe & Bond

1000 Bridgeport Avenue
Suite 320
Shelton, CT 06484
(203) 712-1100

**35% DESIGN
DRAWINGS**

ASML

Campus Traffic
Flow Safety
Improvements

77 Danbury Road
Wilton, Connecticut

MARK	DATE	DESCRIPTION
PROJECT NO:	A0969-015	
DATE:	04/12/2022	
FILE:	A0969-015-C-100-EXCL.dwg	
DRAWN BY:	MDS	
DESIGNED/CHECKED BY:	JAC	
APPROVED BY:	JWB	

EXISTING CONDITIONS
PLAN

SCALE: 1" = 40'

C-100

**35% DESIGN
DRAWINGS**

ASML

Campus Traffic
Flow Safety
Improvements

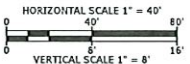
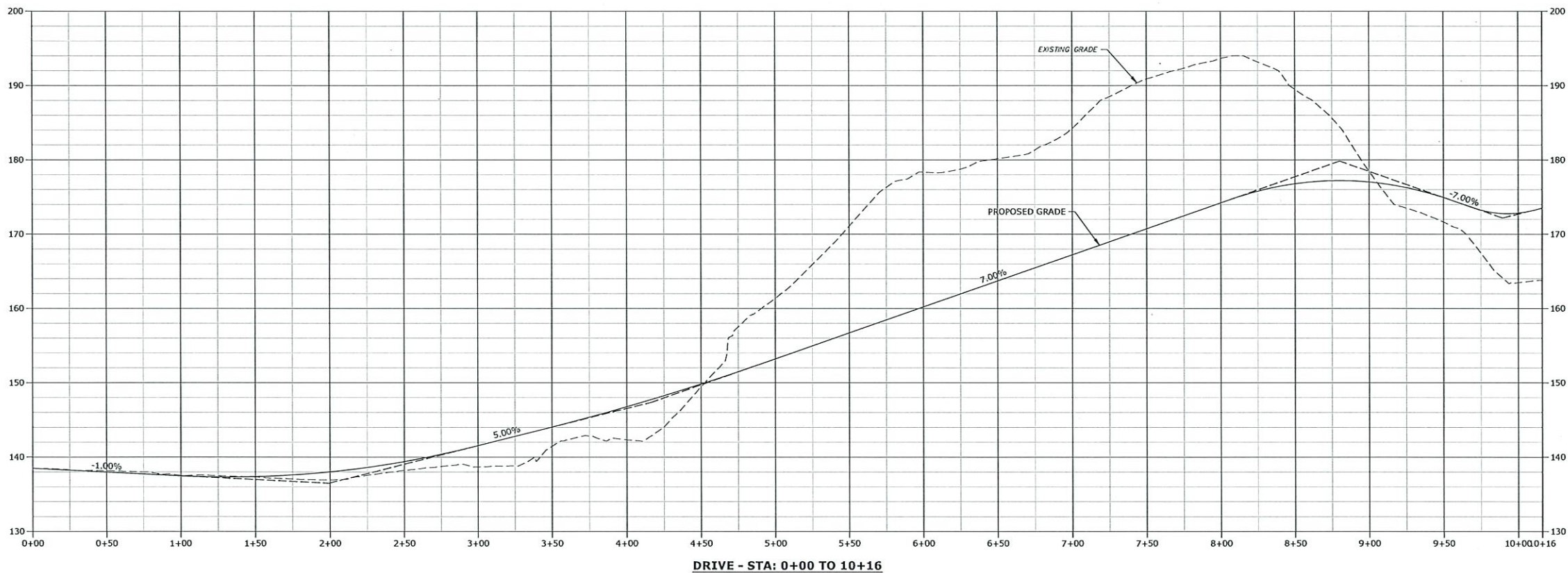
77 Danbury Road
Wilton, Connecticut

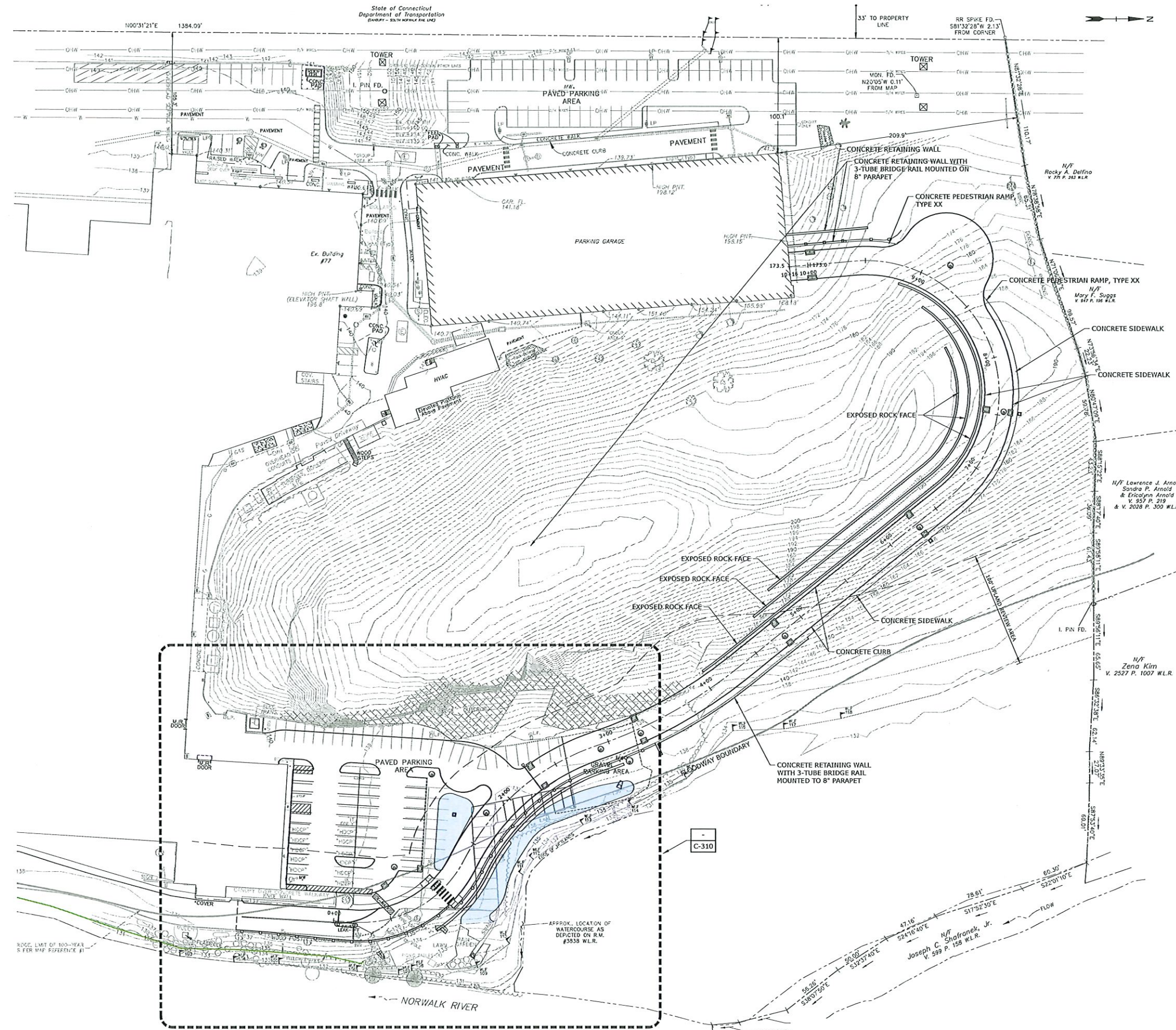
MARK	DATE	DESCRIPTION
PROJECT NO:	A0969-015	
DATE:	04/12/2022	
FILE:	A0969-015-C-220-FR0F.dwg	
DRAWN BY:	HDS	
DESIGNED/CHECKED BY:	JAC	
APPROVED BY:	JNB	

DRIVEWAY PROFILE

SCALE: AS SHOWN

C-220





SITE PLAN NOTES

1. THE ACCURACY AND COMPLETENESS OF SUBSURFACE INFORMATION SHOWN ON THESE DRAWINGS IS NOT GUARANTEED. THE CONTRACTOR SHALL DETERMINE THE LOCATIONS AND ELEVATIONS OF ALL UTILITIES WHICH MAY AFFECT CONSTRUCTION OPERATIONS. THE CONTRACTOR MUST ADEQUATELY PROTECT AND SUPPORT UTILITIES AND SHALL BE RESPONSIBLE FOR ALL DAMAGE INCURRED AT NO EXPENSE TO THE OWNER. ANYONE USING UTILITY INFORMATION AND DATA PROVIDED HEREIN SHALL CONTACT "CALL BEFORE YOU DIG", 1-800-922-4455 OR WWW.CBYD.COM, 72 HOURS IN ADVANCE TO VERIFY THE LOCATION OF UTILITIES PRIOR TO STARTING CONSTRUCTION.
2. REFERENCE IS MADE TO PLAN TITLED
3. IT IS THE RESPONSIBILITY OF THE CONTRACTOR IN EVALUATING THESE PLANS TO MAKE EXAMINATIONS IN THE FIELD BY VARIOUS METHODS AND OBTAIN NECESSARY INFORMATION FROM AVAILABLE RECORDS, UTILITY COMPANIES, AND INDIVIDUALS AS TO THE LOCATION OF SUBSURFACE STRUCTURES.
4. THE WETLANDS DEPICTED ON THE PLANS HAVE BEEN FLAGGED BY MATTHEW E. DAVISON PROFESSIONAL SOILS OF TIGHE & BOND.
5. IT IS THE RESPONSIBILITY OF THE CONTRACTOR TO REVIEW ALL OF THE DRAWINGS AND SPECIFICATIONS ASSOCIATED WITH THIS PROJECT WORK SCOPE PRIOR TO THE INITIATION OF CONSTRUCTION. SHOULD THE CONTRACTOR FIND A CONFLICT WITH THE DOCUMENTS RELATIVE TO THE DRAWINGS, SPECIFICATIONS OR APPLICABLE CODES, IT IS THE CONTRACTOR'S RESPONSIBILITY TO NOTIFY THE OWNER'S REPRESENTATIVE IN WRITING PRIOR TO THE START OF CONSTRUCTION. FAILURE BY THE CONTRACTOR TO NOTIFY THE OWNER'S REPRESENTATIVE SHALL CONSTITUTE ACCEPTANCE OF FULL RESPONSIBILITY BY THE CONTRACTOR TO COMPLETE THE SCOPE OF WORK AS DEFINED BY THE DRAWINGS AND IN FULL CONFORMANCE WITH REGULATIONS AND CODES.

SITE PLAN LEGEND

- - - - - 100 FT UPLAND REVIEW AREA
- - - - - PROPERTY LINE
- - - - - EASEMENT LINE
- ===== PROPOSED CURB
- ===== PROPOSED RETAINING WALL
- ===== PROPOSED BUILDING
- ===== PROPOSED GUIDE RAIL
- PROPOSED FENCE
- PROPOSED SIGN
- PROPOSED CATCH BASIN
- PROPOSED YARD DRAIN
- PROPOSED MANHOLE
- PROPOSED ACCESSIBLE SYMBOL

Tighe & Bond

1000 Bridgeport Avenue
Suite 320
Shelton, CT 06484
(203) 712-1100

**35% DESIGN
DRAWINGS**

ASML

Campus Traffic
Flow Safety
Improvements

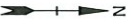
77 Danbury Road
Wilton, Connecticut

MARK	DATE	DESCRIPTION
PROJECT NO:	A0969-015	
DATE:	04/12/2022	
FILE:	A0969-015-C-300-SITE.dwg	
DRAWN BY:	NDS	
DESIGNED/CHECKED BY:	JAC	
APPROVED BY:	JWB	

SITE PLAN

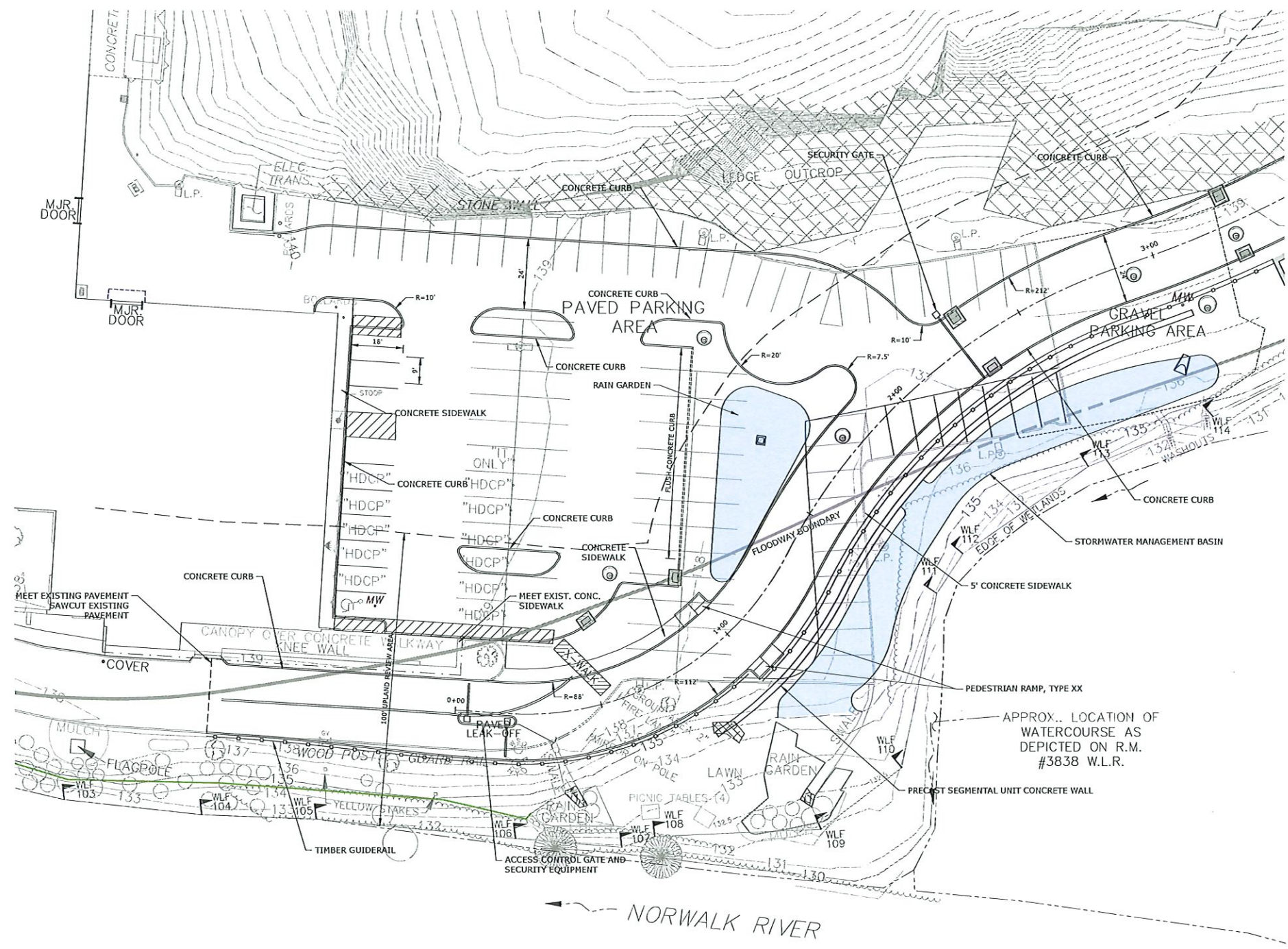
SCALE: 1" = 40'

C-300



Tighe & Bond

1000 Bridgeport Avenue
Suite 320
Shelton, CT 06484
(203) 712-1100



**35% DESIGN
DRAWINGS**

ASML

Campus Traffic
Flow Safety
Improvements

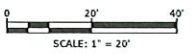
77 Danbury Road
Wilton, Connecticut

MARK	DATE	DESCRIPTION
PROJECT NO:	A0969-015	
DATE:	04/12/2022	
FILE:	A0969-015-C-300-SITE.dwg	
DRAWN BY:	HDS	
DESIGNED/CHECKED BY:	JAC	
APPROVED BY:	JWB	

SITE PLAN
ENLARGEMENT

SCALE: 1" = 20'

C-310



Last Saved: 4/6/2022
Tighe & Bond: 1:AA0969 ASML V15: Drivey Improvements Drawings_ Figures AutoCAD Sheet A0969-015-C-300-SITE.dwg

