

INDEX

A.01 ILLUSTRATIVE SITE PLAN

A.02 GROUND FLOOR PLAN (GR/R1)

A.03 SECOND FLOOR PLAN (R2)

A.04 TYPICAL FLOOR PLAN (R3-R5)

A.05 BUILDING ELEVATION

A.06 BUILDING ELEVATION

A.07 BUILDING ELEVATIONS

A.08 BUILDING SECTION

A.09 MATERIAL BOARD

SUMMARY OF PROVISIONS

TOTAL AREA =

TOTAL KEYS =

STRUCTURED PARKING =

KING AND KING ACCESS =

QUEEN QUEEN AND Q/Q ACCESS =

Q/Q SUITE AND K SUITE =

70,343 GSF

120 KEYS

41 PS

84 KEYS

32 KEYS

4 KEYS

\*NOTE: REFER TO CIVIL FOR SITE PLAN AND CIVIL INFORMATION.  
LANDSCAPE SHOWN FOR ILLUSTRATIVE PURPOSES ONLY.



8521 LEESBURG PIKE, SEVENTH FLOOR, VIENNA, VA 22182  
P: 571.830.1800 | F: 571.830.1801 | WWW.LESSARDDESIGN.COM

ILLUSTRATIVE SITE PLAN

SITE PLAN SUBMISSION

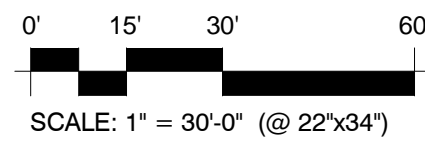
©2022 LESSARD DESIGN INC. EXPRESSLY RESERVES ITS COMMON LAW COPYRIGHT AND OTHER PROPERTY RIGHTS IN THESE PLANS. THESE PLANS ARE NOT TO BE REPRODUCED, CHANGED OR COPIED IN ANY OTHER FORM OR MATTER WHATSOEVER, NOR ARE THEY TO BE ASSIGNED TO ANY THIRD PARTY, WITHOUT FIRST OBTAINING THE EXPRESS WRITTEN PERMISSION AND CONSENT OF LESSARD DESIGN INC.

Wilton Hotel

WILTON.CT.

NATIONAL RESOURCES

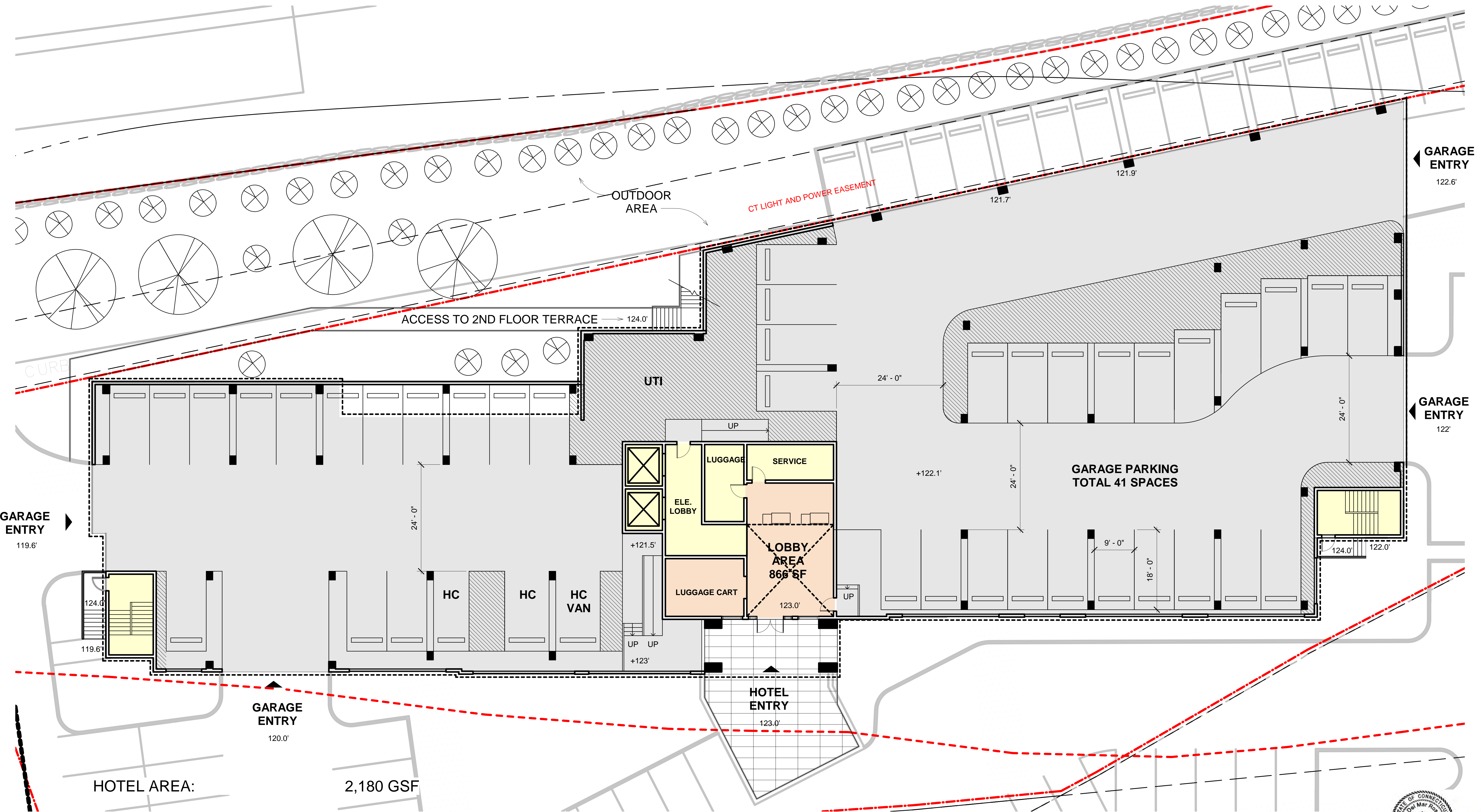
APR 26, 2022  
NRC.030B



A.01







\*NOTE: REFER TO CIVIL FOR SITE PLAN AND CIVIL INFORMATION.  
LANDSCAPE SHOWN FOR ILLUSTRATIVE PURPOSES ONLY.



8521 LEESBURG PIKE, SEVENTH FLOOR, VIENNA, VA 22182  
P: 571.830.1800 | F: 571.830.1801 | WWW.LESSARDDESIGN.COM

## GROUND FLOOR

SITE PLAN SUBMISSION

Wilton Hotel

APR 26, 2022  
NRC.030B

WILTON.CT.

NATIONAL RESOURCES

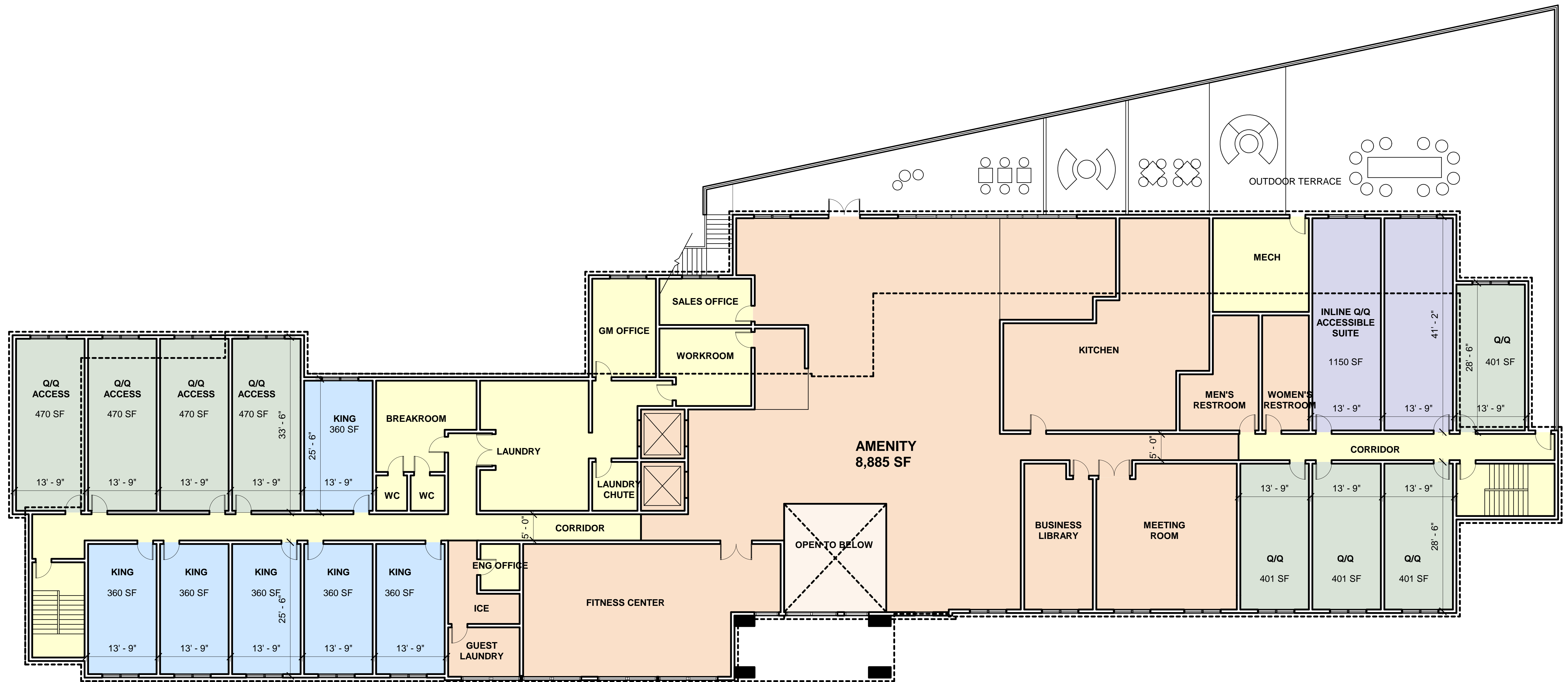


# A.02

0' 5' 10' 20'

SCALE: 1" = 10' - 0" (@22" x 34")

©2022 LESSARD DESIGN INC. EXPRESSLY RESERVES ITS COMMON LAW COPYRIGHT AND OTHER PROPERTY RIGHTS IN THESE PLANS. THESE PLANS ARE NOT TO BE REPRODUCED, CHANGED OR COPIED IN ANY OTHER FORM OR MANNER WHATSOEVER, NOR ARE THEY TO BE ASSIGNED TO ANY THIRD PARTY, WITHOUT FIRST OBTAINING THE EXPRESS WRITTEN PERMISSION AND CONSENT OF LESSARD DESIGN INC.



HOTEL AREA: 19,593 GSF

\*NOTE: HOTEL AMENITIES SHOWN ARE FOR ILLUSTRATIVE PURPOSE ONLY, AND MAY CHANGE DEPENDS ON THE HOTEL STANDARD.



8521 LEESBURG PIKE, SEVENTH FLOOR, VIENNA, VA 22182  
P: 571.830.1800 | F: 571.830.1801 | WWW.LESSARDDESIGN.COM

## SECOND FLOOR

SITE PLAN SUBMISSION

©2021 LESSARD DESIGN INC. EXPRESSLY RESERVES ITS COMMON-LAW COPYRIGHT AND OTHER PROPERTY RIGHTS IN THESE PLANS. THESE PLANS ARE NOT TO BE REPRODUCED, CHANGED OR COPIED IN ANY OTHER FORM OR MATTER WHATSOEVER, NOR ARE THEY TO BE ASSIGNED TO ANY THIRD PARTY, WITHOUT FIRST OBTAINING THE EXPRESS WRITTEN PERMISSION AND CONSENT OF LESSARD DESIGN INC.

Wilton Hotel

APR 26, 2022  
NRC.030B

WILTON.CT.

NATIONAL RESOURCES

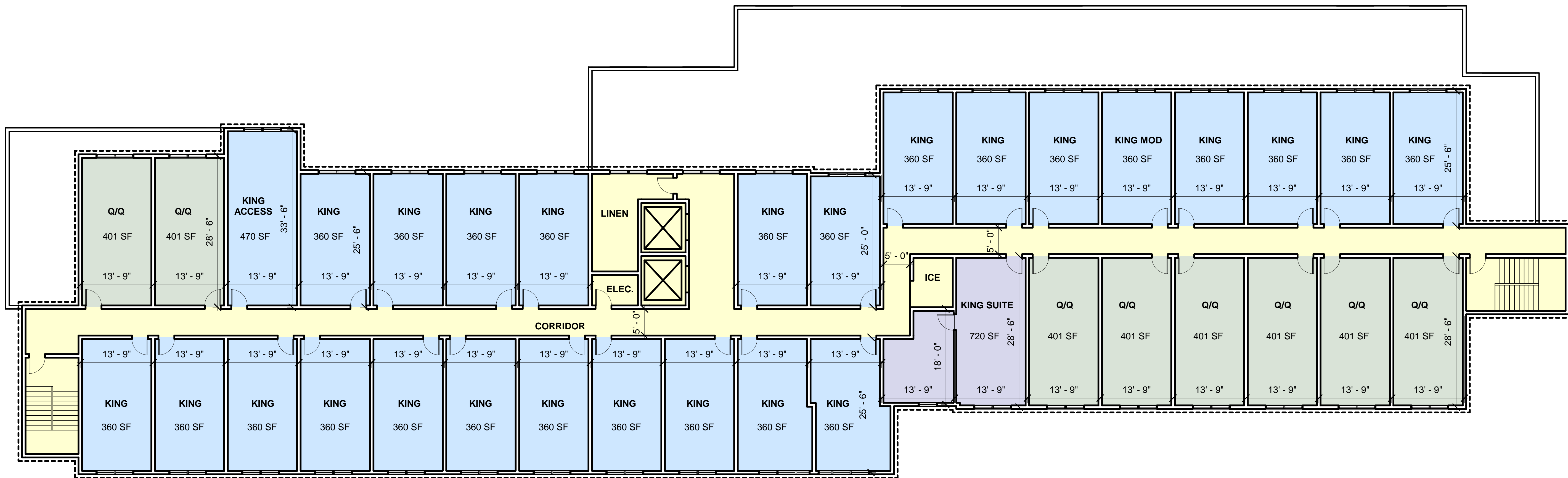
0' 5' 10' 20'

SCALE: 1" = 10' - 0" (@22" x 34")



# A.03





HOTEL AREA: 16,190 GSF



8521 LEESBURG PIKE, SEVENTH FLOOR, VIENNA, VA 22182  
P: 571.830.1800 | F: 571.830.1801 | WWW.LESSARDDESIGN.COM

TYPICAL FLOOR

SITE PLAN SUBMISSION

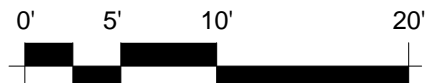
©2021 LESSARD DESIGN INC. EXPRESSLY RESERVES ITS COMMON-LAW COPYRIGHT AND OTHER PROPERTY RIGHTS IN THESE PLANS. THESE PLANS ARE NOT TO BE REPRODUCED, CHANGED OR COPIED IN ANY OTHER FORM OR MANNER WHATSOEVER, NOR ARE THEY TO BE ASSIGNED TO ANY THIRD PARTY, WITHOUT FIRST OBTAINING THE EXPRESS WRITTEN PERMISSION AND CONSENT OF LESSARD DESIGN INC.

Wilton Hotel

WILTON.CT.

NATIONAL RESOURCES

APR 26, 2022  
NRC.030B

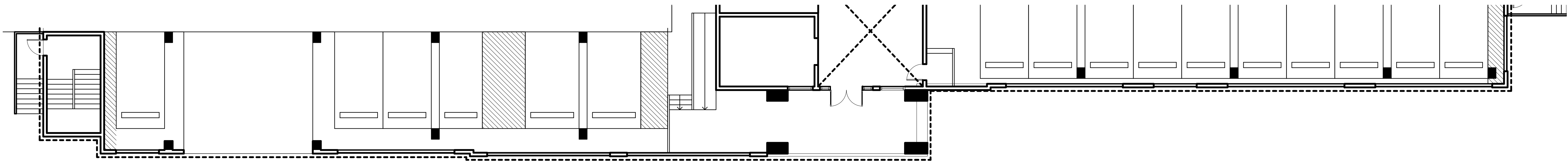


SCALE: 1" = 10' - 0" (@22" x 34")

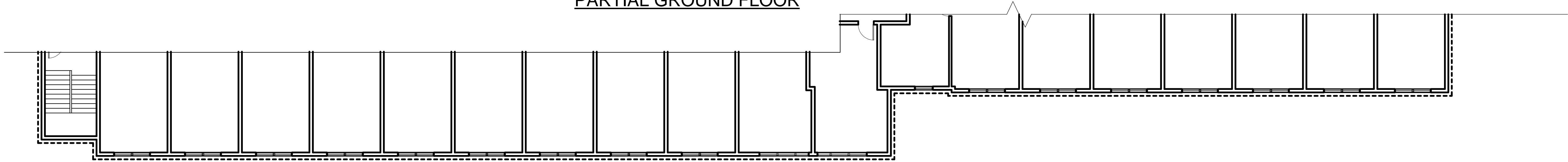


A.04





PARTIAL GROUND FLOOR



PARTIAL TYPICAL PLAN



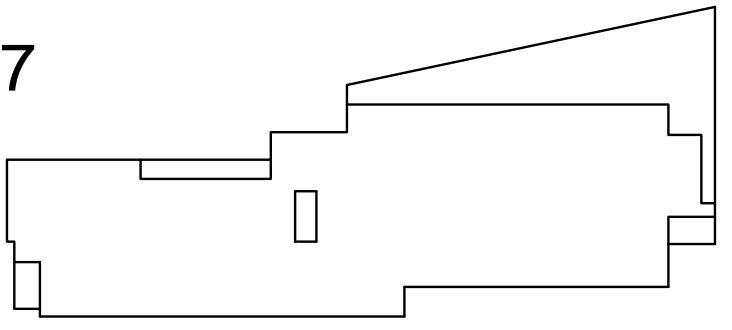
**MATERIAL LEGEND**

- 01 METAL PANEL - DARK GREY
- 02 FIBER CEMENT - DARK GREY
- 03 FIBER CEMENT - MEDIUM GRAY
- 04 FIBER CEMENT - LIGHT GRAY
- 05 STONE - MEDIUM GREY
- 06 BRICK - RED
- 07 LOUVER - DARK GREY

**SOUTH ELEVATION**

**BUILDING ELEVATION**

**SITE PLAN SUBMISSION**



KEY PLAN



Wilton Hotel

APR 26, 2022  
NRC.030B

**A.05**

WILTON.CT.



SCALE: 1" = 10' - 0" (@22" x 34")

**NATIONAL RESOURCES**

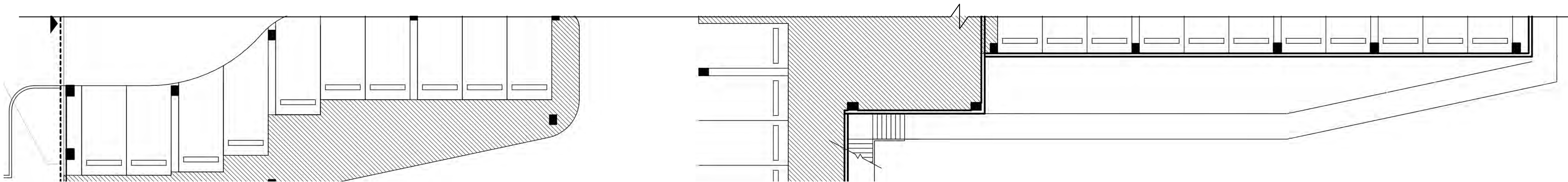
\*NOTE: PRODUCTS AND MANUFACTURERS LISTED ARE SUBJECT TO CHANGE AND/OR TO BE SUBSTITUTED WITH EQUIVALENT AND COMPATIBLE OPTIONS



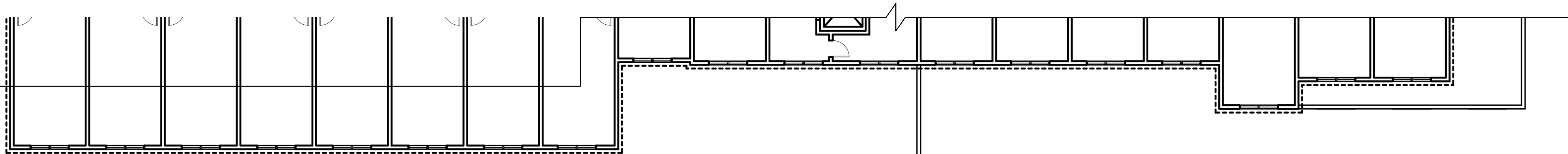
8521 LEESBURG PIKE, SEVENTH FLOOR, VIENNA, VA 22182  
P: 571.830.1800 | F: 571.830.1801 | WWW.LESSARDDESIGN.COM

©2022 LESSARD DESIGN INC. EXPRESSLY RESERVES ITS COMMON-LAW COPYRIGHT AND OTHER PROPERTY RIGHTS IN THESE PLANS. THESE PLANS ARE NOT TO BE REPRODUCED, CHANGED OR COPIED IN ANY OTHER FORM OR MATTER WHATSOEVER, NOR ARE THEY TO BE ASSIGNED TO ANY THIRD PARTY, WITHOUT FIRST OBTAINING THE EXPRESS WRITTEN PERMISSION AND CONSENT OF LESSARD DESIGN INC.





PARTIAL GROUND FLOOR



PARTIAL TYPICAL PLAN



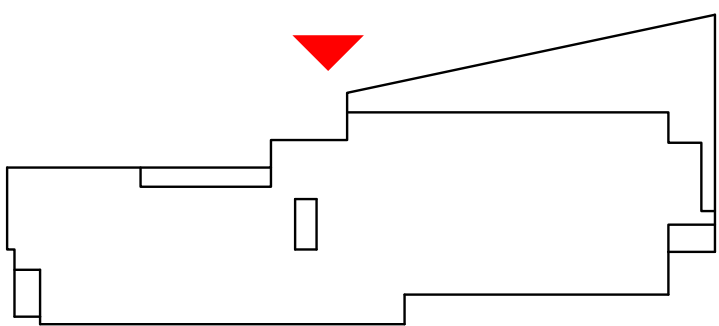
**MATERIAL LEGEND**

- 01 METAL PANEL - DARK GREY
- 02 FIBER CEMENT - DARK GREY
- 03 FIBER CEMENT - MEDIUM GRAY
- 04 FIBER CEMENT - LIGHT GRAY
- 05 STONE - MEDIUM GREY
- 06 BRICK - RED
- 07 LOUVER - DARK GREY

**NORTH ELEVATION**

**BUILDING ELEVATION**

**SITE PLAN SUBMISSION**



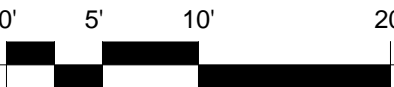
**KEY PLAN**

Wilton Hotel

APR 26, 2022  
NRC.030B

WILTON.CT.

**NATIONAL RESOURCES**



SCALE: 1" = 10' - 0" (@22" x 34")



**A.06**

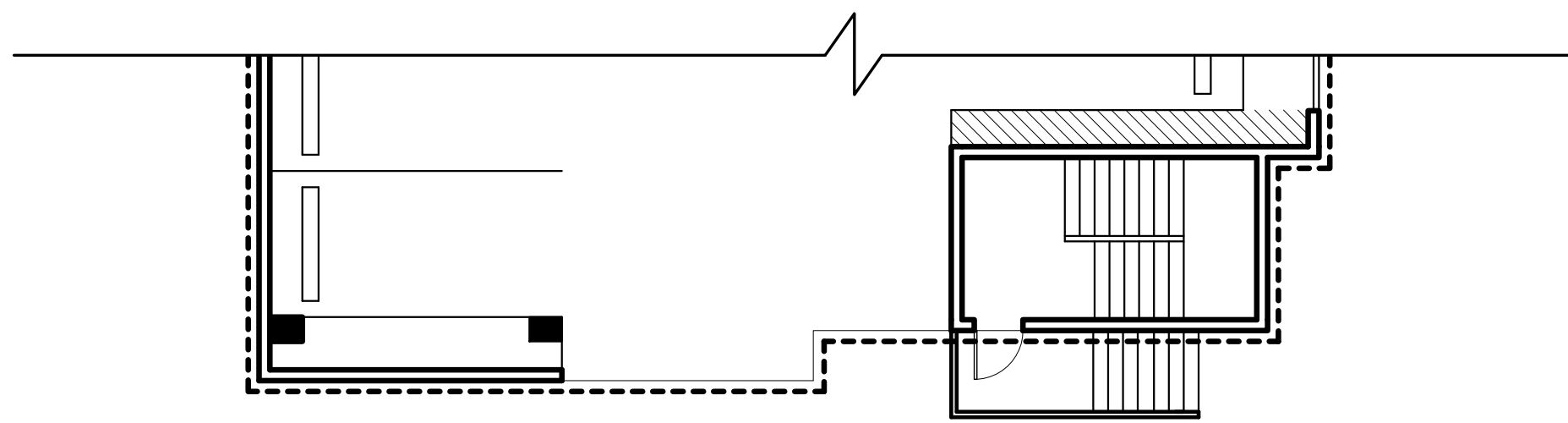
\*NOTE: PRODUCTS AND MANUFACTURERS LISTED ARE SUBJECT TO CHANGE AND/OR TO BE SUBSTITUTED WITH EQUIVALENT AND COMPATIBLE OPTIONS



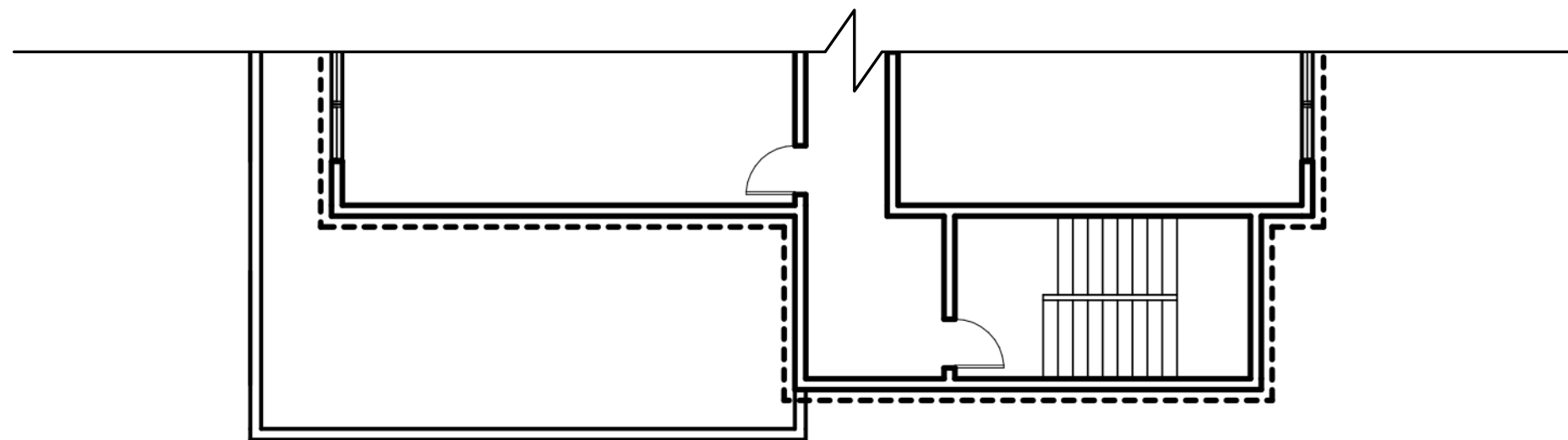
8521 LEESBURG PIKE, SEVENTH FLOOR, VIENNA, VA 22182  
P: 571.830.1800 | F: 571.830.1801 | WWW.LESSARDDESIGN.COM

©2022 LESSARD DESIGN INC. EXPRESSLY RESERVES ITS COMMON LAW COPYRIGHT AND OTHER PROPERTY RIGHTS IN THESE PLANS. THESE PLANS ARE NOT TO BE REPRODUCED, CHANGED OR COPIED IN ANY OTHER FORM OR MANNER WHATSOEVER, NOR ARE THEY TO BE ASSIGNED TO ANY THIRD PARTY, WITHOUT FIRST OBTAINING THE EXPRESS WRITTEN PERMISSION AND CONSENT OF LESSARD DESIGN INC.

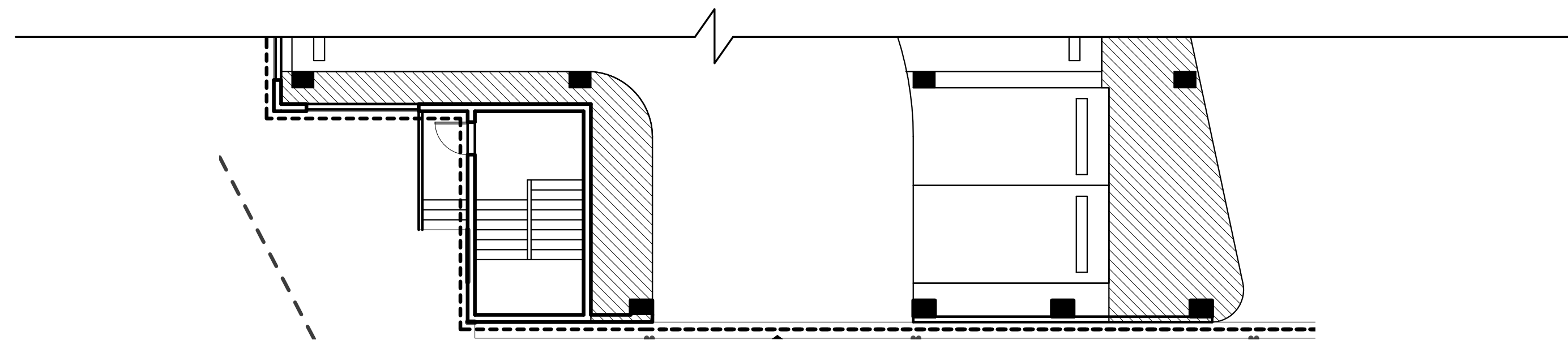




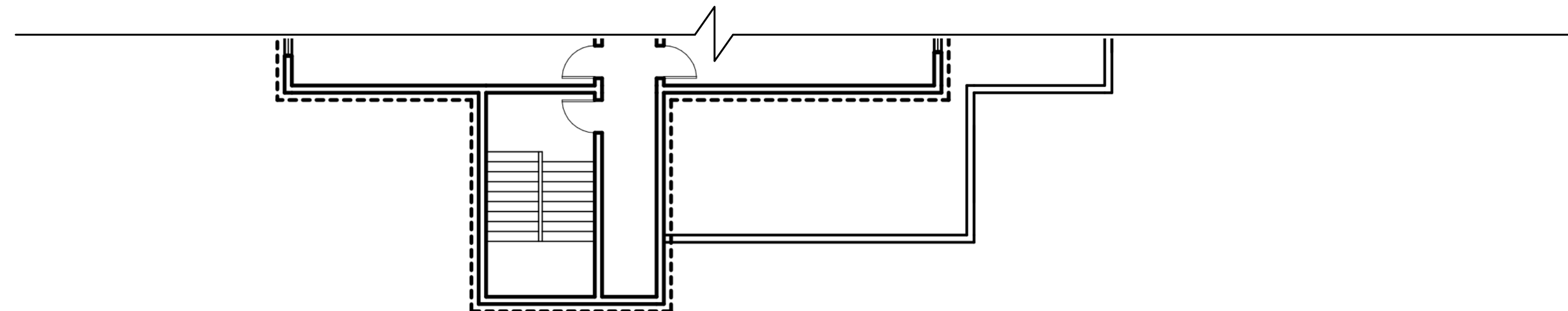
PARTIAL GROUND FLOOR



PARTIAL TYPICAL PLAN



PARTIAL GROUND FLOOR



PARTIAL TYPICAL PLAN



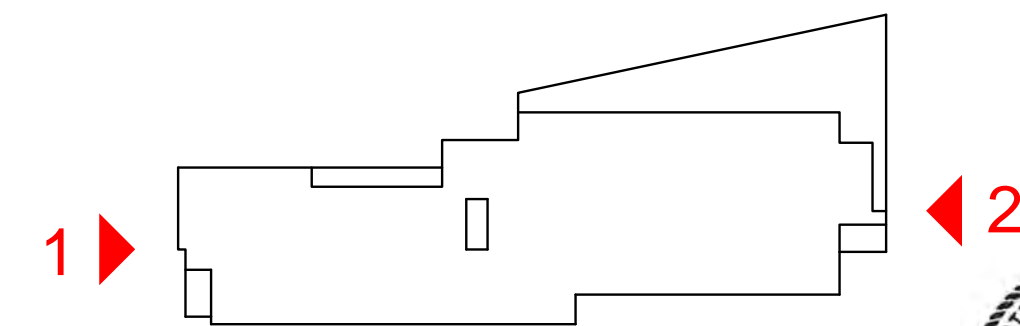
WEST ELEVATION (1)

**MATERIAL LEGEND**

- 01 METAL PANEL - DARK GREY
- 02 FIBER CEMENT - DARK GREY
- 03 FIBER CEMENT - MEDIUM GRAY
- 04 FIBER CEMENT - LIGHT GRAY
- 05 STONE - MEDIUM GREY
- 06 BRICK - RED
- 07 LOUVER - DARK GREY



EAST ELEVATION (2)



KEY PLAN



\*NOTE: PRODUCTS AND MANUFACTURERS LISTED ARE SUBJECT TO CHANGE AND/OR TO BE SUBSTITUTED WITH EQUIVALENT AND COMPATIBLE OPTIONS



8521 LEESBURG PIKE, SEVENTH FLOOR, VIENNA, VA 22182  
P: 571.830.1800 | F: 571.830.1801 | WWW.LESSARDDDESIGN.COM

**BUILDING ELEVATIONS**

SITE PLAN SUBMISSION

©2022 LESSARD DESIGN INC. EXPRESSLY RESERVES ITS COMMON-LAW COPYRIGHT AND OTHER PROPERTY RIGHTS IN THESE PLANS. THESE PLANS ARE NOT TO BE REPRODUCED, CHANGED OR COPIED IN ANY OTHER FORM OR MANNER WHATSOEVER, NOR ARE THEY TO BE ASSIGNED TO ANY THIRD PARTY, WITHOUT FIRST OBTAINING THE EXPRESS WRITTEN PERMISSION AND CONSENT OF LESSARD DESIGN INC.

Wilton Hotel

APR 26, 2022  
NRC.030B

**A.07**

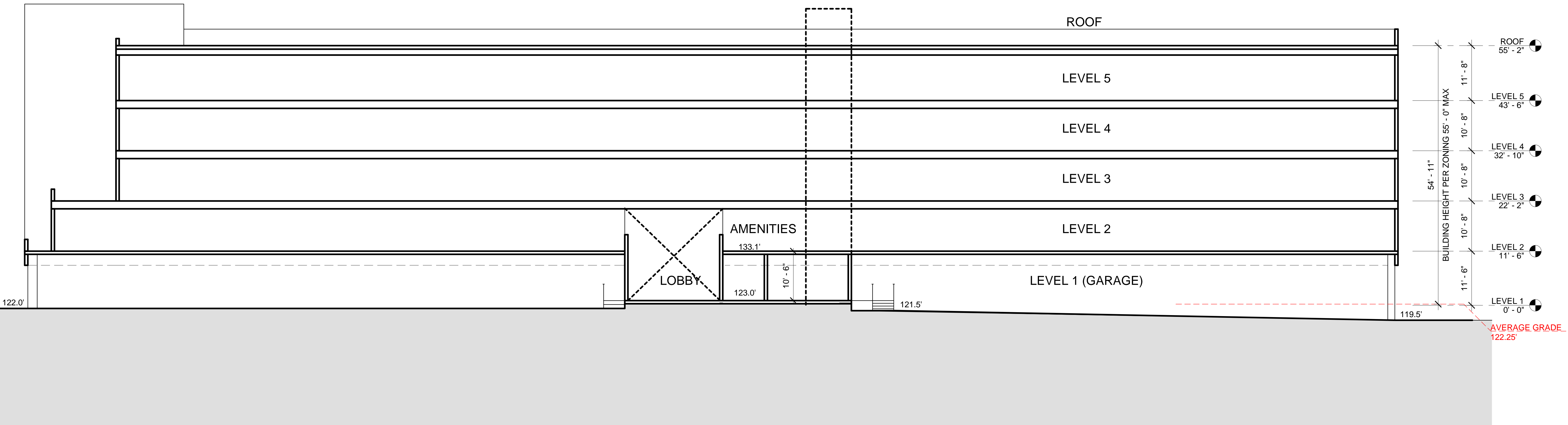
WILTON.CT.

**NATIONAL RESOURCES**



SCALE: 1" = 10' - 0" (@22" x 34")

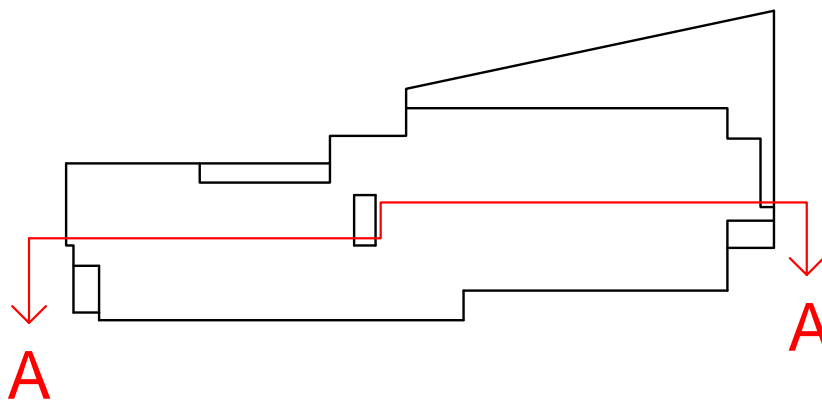




BUILDING SECTION A-A

BUILDING SECTION

SITE PLAN SUBMISSION



KEY PLAN



Wilton Hotel

APR 26, 2022  
NRC.030B

A.08

WILTON.CT.



SCALE: 1" = 10' - 0" (@22" x 34")

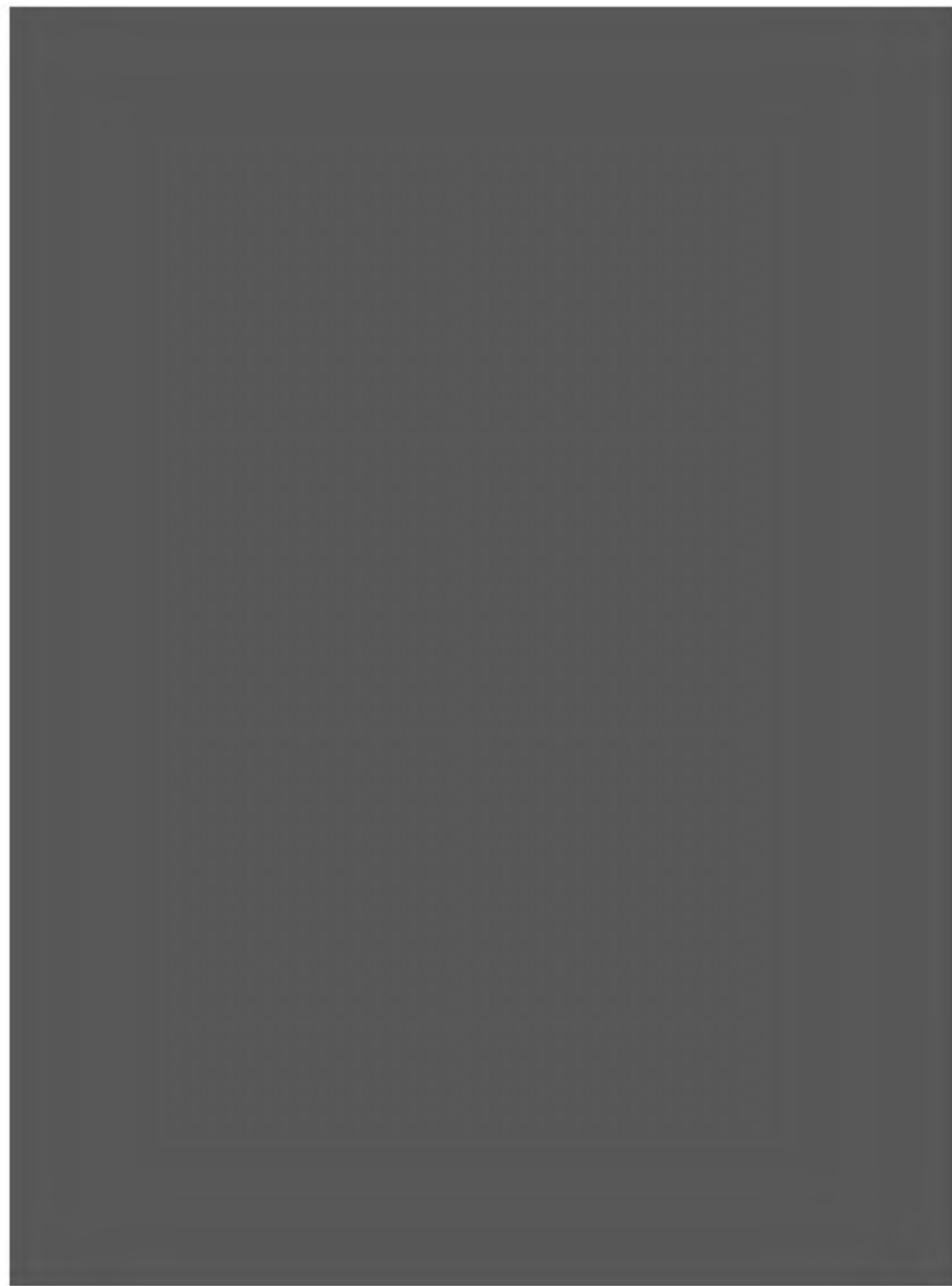


8521 LEESBURG PIKE, SEVENTH FLOOR, VIENNA, VA 22182  
P: 571.830.1800 | F: 571.830.1801 | WWW.LESSARDDESIGN.COM

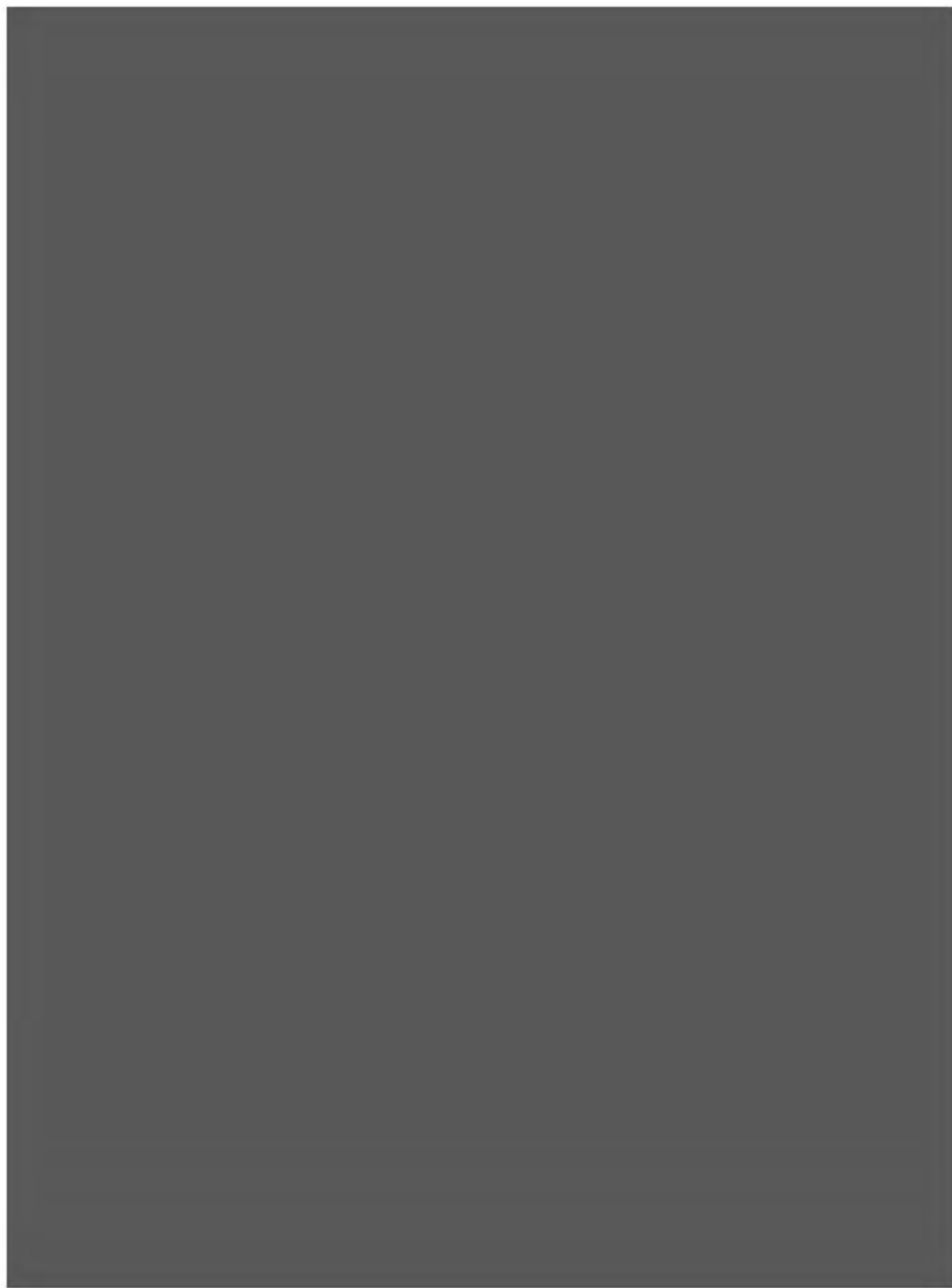
©2021 LESSARD DESIGN INC. EXPRESSLY RESERVES ITS COMMON-LAW COPYRIGHT AND OTHER PROPERTY RIGHTS IN THESE PLANS. THESE PLANS ARE NOT TO BE REPRODUCED, CHANGED OR COPIED IN ANY OTHER FORM OR MATTER WHATSOEVER, NOR ARE THEY TO BE ASSIGNED TO ANY THIRD PARTY, WITHOUT FIRST OBTAINING THE EXPRESS WRITTEN PERMISSION AND CONSENT OF LESSARD DESIGN INC.

NATIONAL RESOURCES





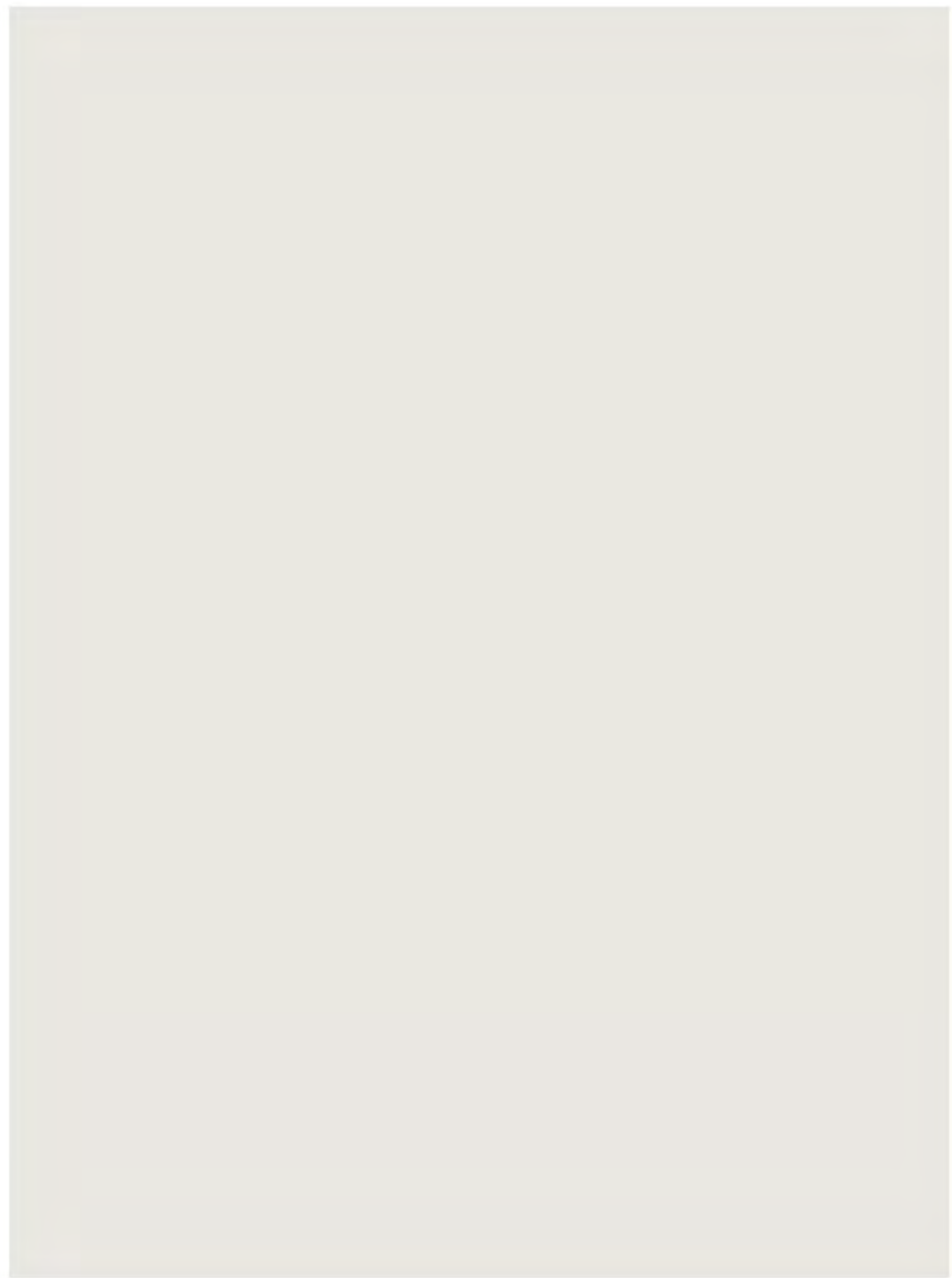
**01** METAL PANEL  
DARK GREY



**02** FIBER CEMENT  
DARK GREY



**03** FIBER CEMENT  
MEDIUM GREY



**04** FIBER CEMENT  
LIGHT GREY



**05** STONE  
MEDIUM GREY



**06** BRICK  
RED



**07** LOUVER  
DARK GREY