

PROPOSED DESIGN



VISION

Welcoming and Safe

Modern and Forward Looking

Open and Light Filled

Exciting to the Eye

Warm and Friendly

Professional and Compassionate

Inviting and Visible Entrances

MATERIALS - WARM AND FRIENDLY



USE OF GLAZING TO ALLOW FOR TRANSPARENCY AND EXPOSURE TO THE LANDSCAPE AT ALL VIEWS

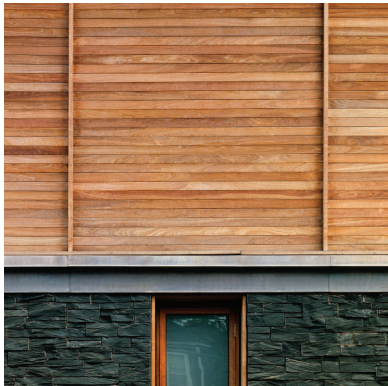


THE USE OF SELECT MATERIALS TO ALLOW THE BUILDING TO HAVE A SENSE OF WARMTH AND TIE INTO THE MORE RESIDENTIAL CHARACTER OF THE NEIGHBORHOOD. MATERIAL IS LIKELY TO HAVE THE CHARACTER OF WOOD BUT PROVIDE APPROPRIATE MAINTENANCE CHARACTERISTICS.



MATERIALS - MODERN AND FORWARD LOOKING

MASONRY BASE TO GROUND THE BUILDING WITHIN THE SITE AND REFERENCE THE ROCKY TERRAIN THAT SURROUNDS THE SITE, NATURAL FIELD STONE THAT DOTS THE LANDSCAPE THROUGHOUT NEW ENGLAND. ITS LIKELY FIELDSTONE FROM THE SITE WILL BE INCORPORATED INTO THE SITE WALLS AND OTHER LANDSCAPE ELEMENTS



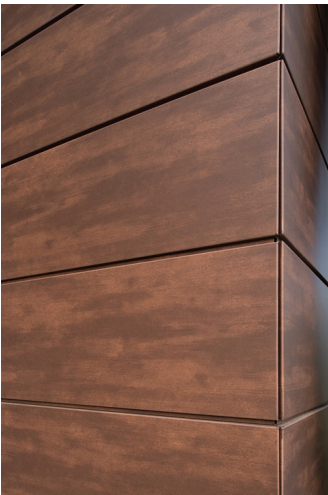
BUILDING THAT WORKS WITH THE LANDSCAPE

MATERIALS - EXCITING TO THE EYE

METAL CAN ALSO TAKE ON A SOFTER LOOK WITH SELECTION OF COLOR AND USE OF DIFFERENT PANEL DESIGNS



STRATEGICALLY LOCATED METAL PANELS TO ALLOW FOR A TIMELESS AESTHETIC AND PLAY OF COLOR AND SHADOW



PERFORATED METAL TO ALLOW FOR SIGNAGE AND BRANDING

