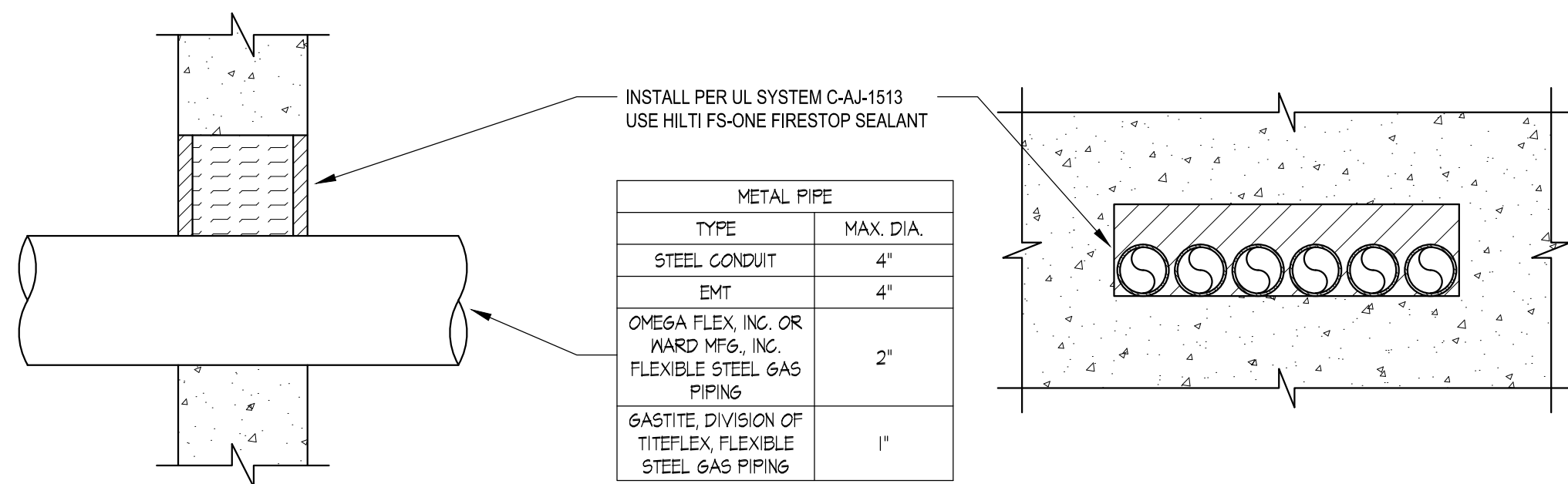
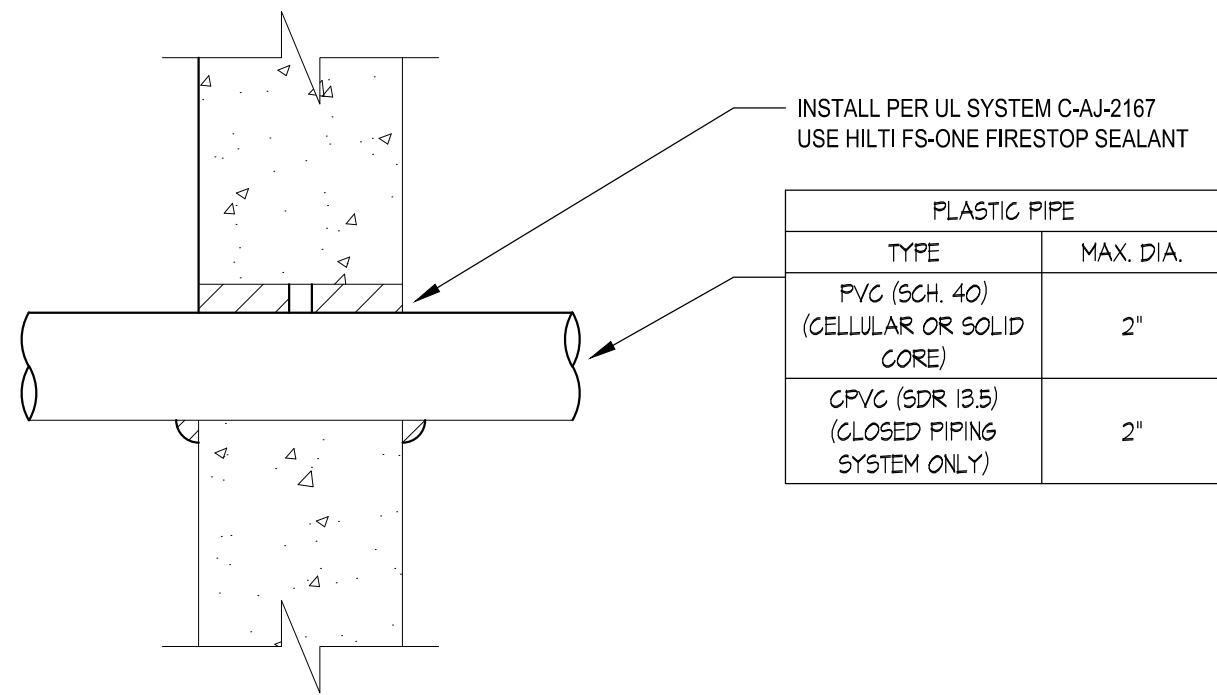


1	IS A VIOLATION OF C.T. STATE LAWS FOR ANY PERSON UNLESS DIRECTED BY A REGISTERED ARCHITECT OR PROFESSIONAL ENGINEER TO ALTER ANY
2	THE
3	THE
4	THE
5	THE
6	THE
7	THE
8	THE
9	THE
10	THE
11	THE
12	THE
13	THE
14	THE
15	THE
16	THE
17	THE
18	THE
19	THE
20	THE
21	THE
22	THE
23	THE
24	THE
25	THE
26	THE
27	THE
28	THE
29	THE
30	THE
31	THE
32	THE
33	THE
34	THE
35	THE
36	THE
37	THE
38	THE
39	THE
40	THE
41	THE
42	THE
43	THE
44	THE
45	THE
46	THE
47	THE
48	THE
49	THE
50	THE
51	THE
52	THE
53	THE
54	THE
55	THE
56	THE
57	THE
58	THE
59	THE
60	THE
61	THE
62	THE
63	THE
64	THE
65	THE
66	THE
67	THE
68	THE
69	THE
70	THE
71	THE
72	THE
73	THE
74	THE
75	THE
76	THE
77	THE
78	THE
79	THE
80	THE
81	THE
82	THE
83	THE
84	THE
85	THE
86	THE
87	THE
88	THE
89	THE
90	THE
91	THE
92	THE
93	THE
94	THE
95	THE
96	THE
97	THE
98	THE
99	THE
100	THE



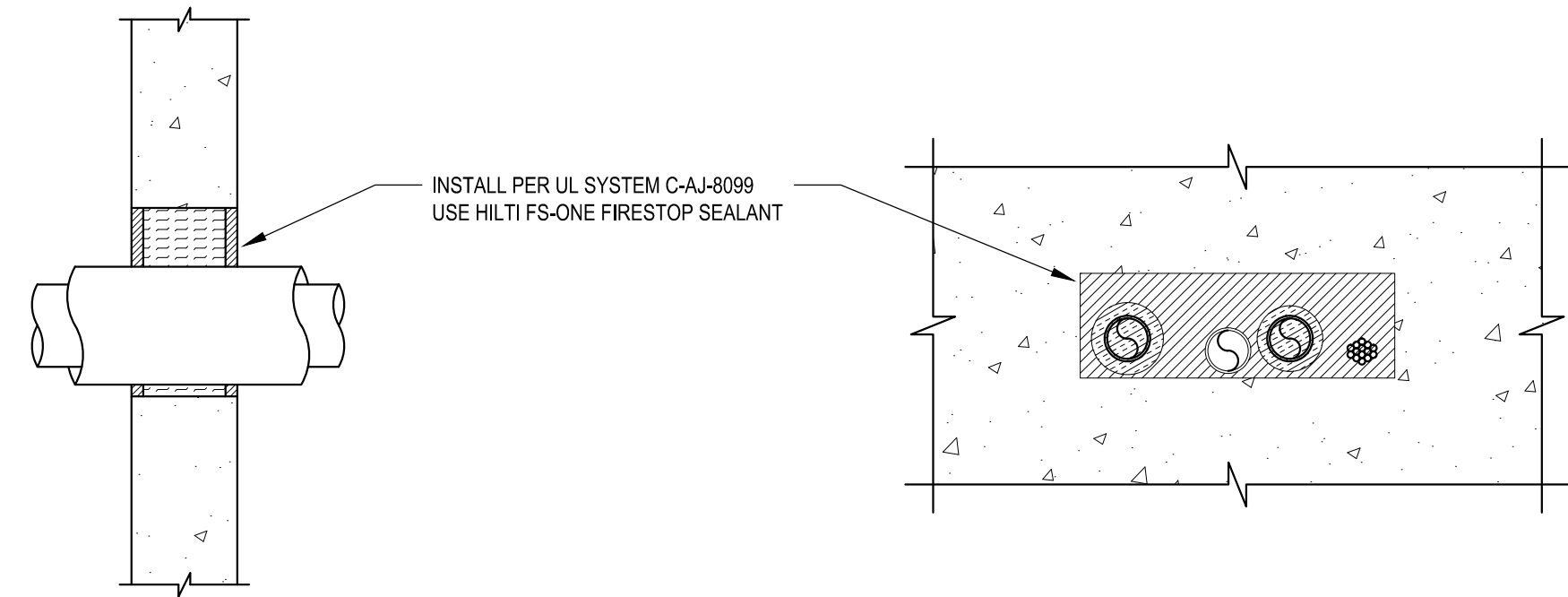
INSTALL PER UL SYSTEM C-AJ-1513
USE HILTI FS-ONE FIRESTOP SEALANT

METAL PIPE	
TYPE	MAX. DIA.
STEEL CONDUIT	4"
EMT	4"
OMEGA FLEX, INC. OR WARD MFG. INC. FLEXIBLE STEEL GAS PIPING	2"
GASTITE, DIVISION OF TITFLEX, FLEXIBLE STEEL GAS PIPING	1"



INSTALL PER UL SYSTEM C-AJ-2167
USE HILTI FS-ONE FIRESTOP SEALANT

PLASTIC PIPE	
TYPE	MAX. DIA.
PVC (SCH. 40) (CELLULAR OR SOLID CORE)	2"
CPVC (SDR 13.5) (CLOSED PIPING SYSTEM ONLY)	2"

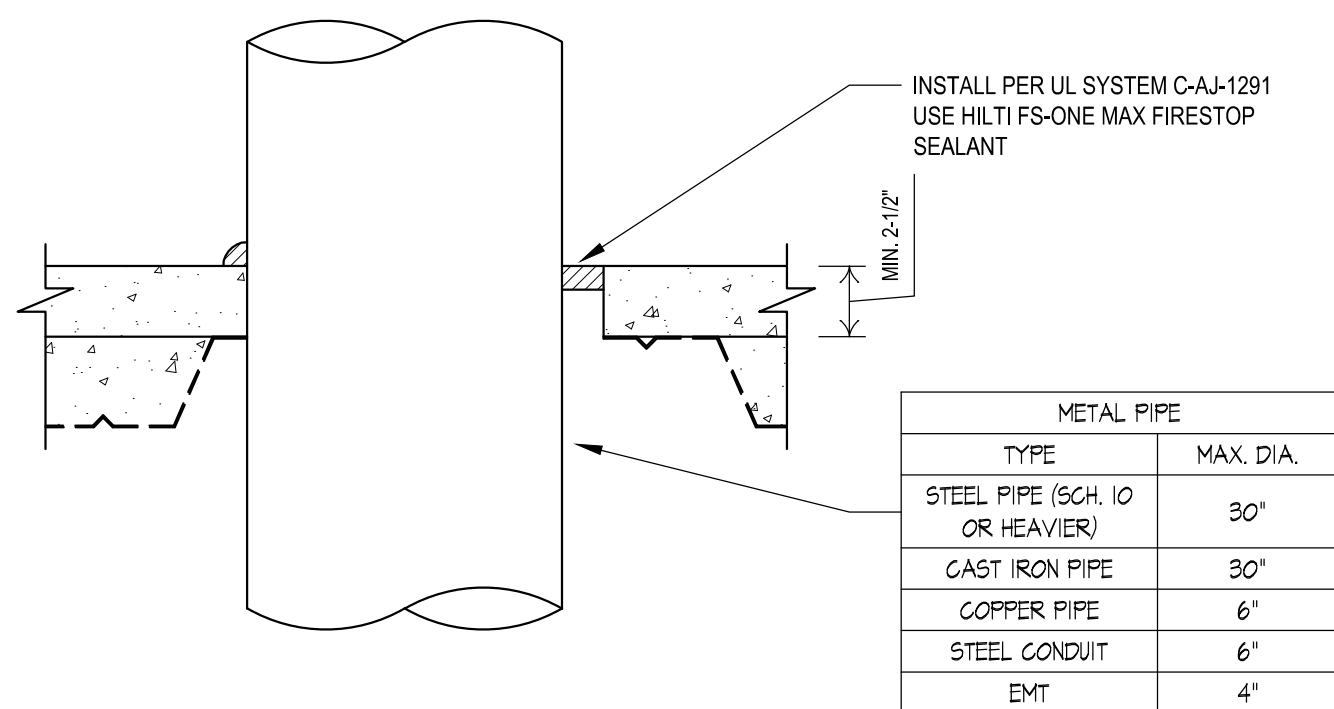


INSTALL PER UL SYSTEM C-AJ-8099
USE HILTI FS-ONE FIRESTOP SEALANT

1 MULTIPLE METAL PIPES THROUGH CONCRETE WALL
Scale: NTS

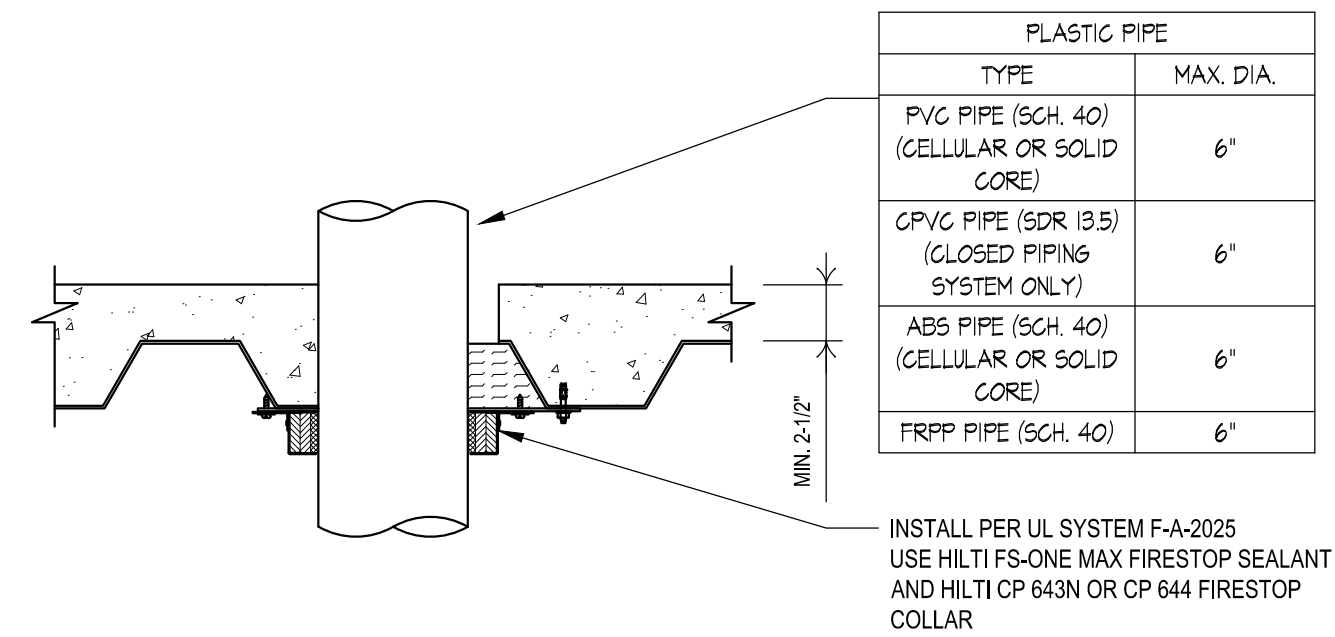
2 PLASTIC PIPE THROUGH CONCRETE WALL
Scale: NTS

3 MULTIPLE PENETRATIONS THROUGH CONCRETE WALL
Scale: NTS



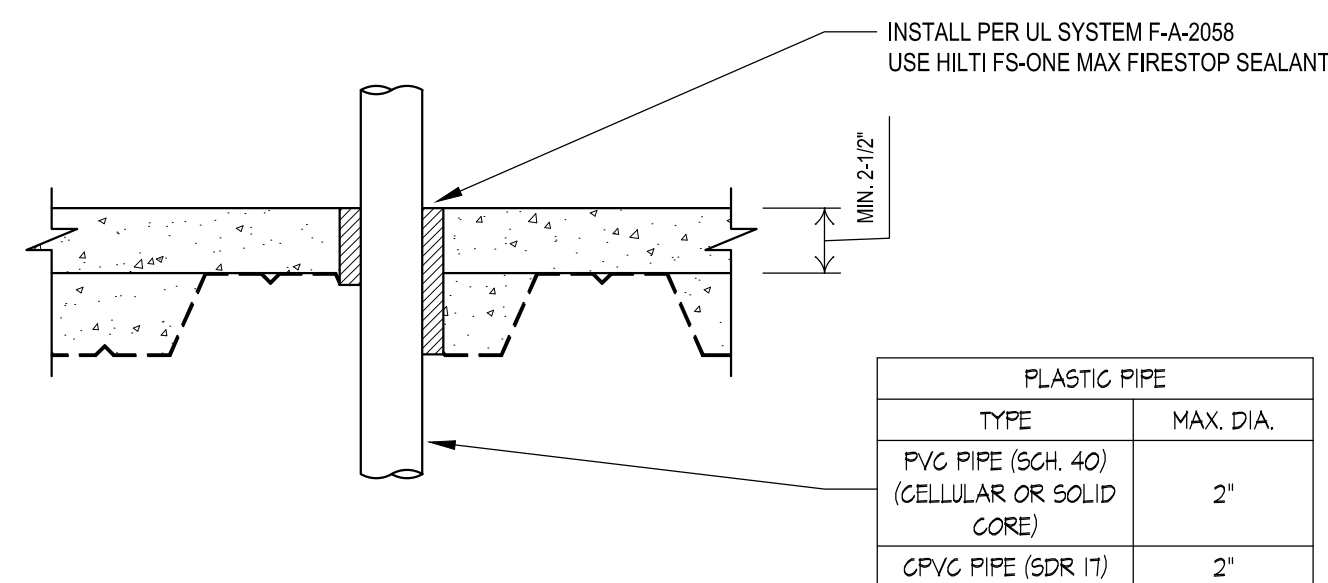
INSTALL PER UL SYSTEM C-AJ-1291
USE HILTI FS-ONE MAX FIRESTOP
SEALANT

METAL PIPE	
TYPE	MAX. DIA.
STEEL PIPE (SCH. 10 OR HEAVIER)	30"
CAST IRON PIPE	30"
COPPER PIPE	6"
STEEL CONDUIT	6"
EMT	4"



PLASTIC PIPE	
TYPE	MAX. DIA.
PVC PIPE (SCH. 40) (CELLULAR OR SOLID CORE)	6"
CPVC PIPE (SDR 13.5) (CLOSED PIPING SYSTEM ONLY)	6"
ABS PIPE (SCH. 40) (CELLULAR OR SOLID CORE)	6"
FRPP PIPE (SCH. 40)	6"

INSTALL PER UL SYSTEM F-A-2025
USE HILTI FS-ONE MAX FIRESTOP SEALANT
AND HILTI CP 643N OR CP 644 FIRESTOP
COLLAR



INSTALL PER UL SYSTEM F-A-2058
USE HILTI FS-ONE MAX FIRESTOP SEALANT

PLASTIC PIPE	
TYPE	MAX. DIA.
PVC PIPE (SCH. 40) (CELLULAR OR SOLID CORE)	2"
CPVC PIPE (SDR 11)	2"

FIRESTOPPING NOTES:

NOTE: FIRE STOPPING IS TO COMPLY WITH SECTION 716.2 & 716.3
OF 2018 IBC

1. CONCEALED SPACES WITHIN WALL, CEILING PARTITION, STAIR,
ATTIC OR CORNICE CONSTRUCTION, AND AROUND CHIMNEY, PIPE
AND DUCT OPENINGS IN SUCH CONSTRUCTION, SHALL BE
FIRE-STOPPED OR FILLED WITH NONCOMBUSTIBLE MATERIAL TO
PREVENT THE PASSAGE OF FLAME, SMOKE, FUMES AND HOT
GASES.

2. FIRESTOPPING OR FILL SHALL BE OF NONFLAMMABLE MATERIAL
WHICH CAN BE SHAPED, FITTED AND PERMANENTLY SECURED IN
POSITION.

3. COMBUSTIBLE FIRESTOPPING MATERIALS MAY BE USED
CONSISTING OF MIN. 2" NOMINAL THICKNESS WOOD.

4. NONCOMBUSTIBLE FIRESTOPPING MATERIALS SHALL BE USED
AROUND FLUES, AND CHIMNEYS.

5. FLAMMABLE MATERIALS SHALL NOT BE PERMITTED AS
INSULATION OR FILL IN CONCEALED OR ATTIC SPACES.

6. CONCEALED VERTICAL SPACES IN WALLS AND PARTITIONS
SHALL BE FIRE-STOPPED AT EACH FLOOR LEVEL AND AT THE
CEILING OF THE UPPERMOST STORY, SO THAT SUCH SPACES WILL
NOT BE CONTINUOUS FOR MORE THAN ONE STORY OR
COMMUNICATE WITH CONCEALED HORIZONTAL SPACES IN THE
FLOOR OR ROOF CONSTRUCTION.

7. WHEN COMBUSTIBLE MATERIALS FORM A PART OF THE
CONCEALED SPACE BETWEEN SURFACE FINISH AND THE BASE TO
WHICH THEY ARE APPLIED, THE CONCEALED SPACE SHALL BE
FILLED WITH NONCOMBUSTIBLE MATERIAL, OR BE FIRE-STOPPED
SO THAT NO DIMENSION OF SUCH CONCEALED SPACE EXCEEDS 8
FEET VERTICALLY OR 20 FEET HORIZONTALLY.

8. SPACE BETWEEN FLOOR JOISTS OR TRUSSES WITH CEILINGS
ATTACHED DIRECTLY TO THE JOISTS OR TRUSSES SHALL BE FIRE-
STOPPED FOR THE FULL DEPTH OF THE JOISTS OR TRUSSES AT
ALL POINTS OF SUPPORT, UNDER SUPPORTED WALLS AND
PARTITIONS HAVING A REQUIRED FIRE-RESISTANCE RATING.

9. CONCEALED SPACE IN STAIRS SHALL BE FIRE-STOPPED SO AS
NOT TO COMMUNICATE AT THE TOP AND BOTTOM OF THE STAIRS
WITH CONCEALED SPACE IN THE FLOOR CONSTRUCTION.

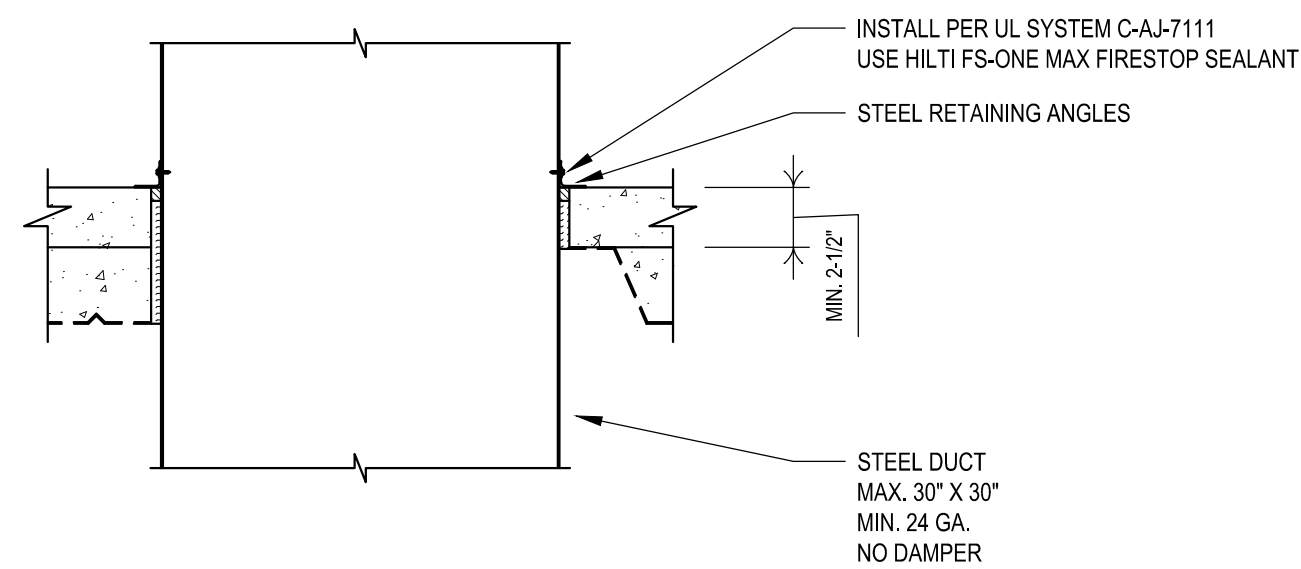
10. EXTERIOR CORNICES AND EAVES SHALL BE FIRE-STOPPED AT
THE ENDS OF FIRE AND PARTY WALLS, AND AT INTERVALS OF NOT
MORE THAN 20 FEET.

11. THE SPACE IN ATTICS OR BETWEEN COMBUSTIBLE FLOOR OR
ROOF CONSTRUCTION AND A SUSPENDED CEILING SHALL BE
FIRE-STOPPED SO THAT NO AREA OF SUCH CONCEALED SPACE
SHALL BE GREATER THAN 3,000 SQUARE FEET

4 METAL PIPE THROUGH CONCRETE OVER METAL DECKING
Scale: NTS

5 PLASTIC PIPE THROUGH CONCRETE OVER METAL DECKING
Scale: NTS

6 PLASTIC PIPE THROUGH CONCRETE OVER METAL DECKING
Scale: NTS

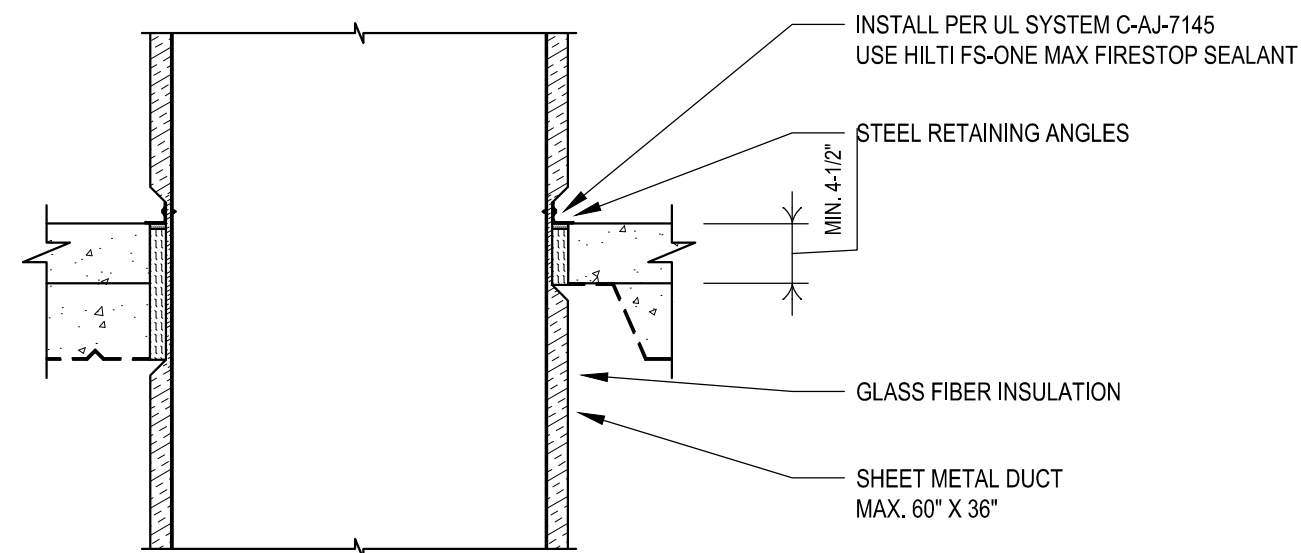


INSTALL PER UL SYSTEM C-AJ-7111
USE HILTI FS-ONE MAX FIRESTOP SEALANT

STEEL RETAINING ANGLES

MIN. 2-1/2"

STEEL DUCT
MAX. 30" X 30"
MIN. 24 GA.
NO DAMPER



INSTALL PER UL SYSTEM C-AJ-7145
USE HILTI FS-ONE MAX FIRESTOP SEALANT

STEEL RETAINING ANGLES

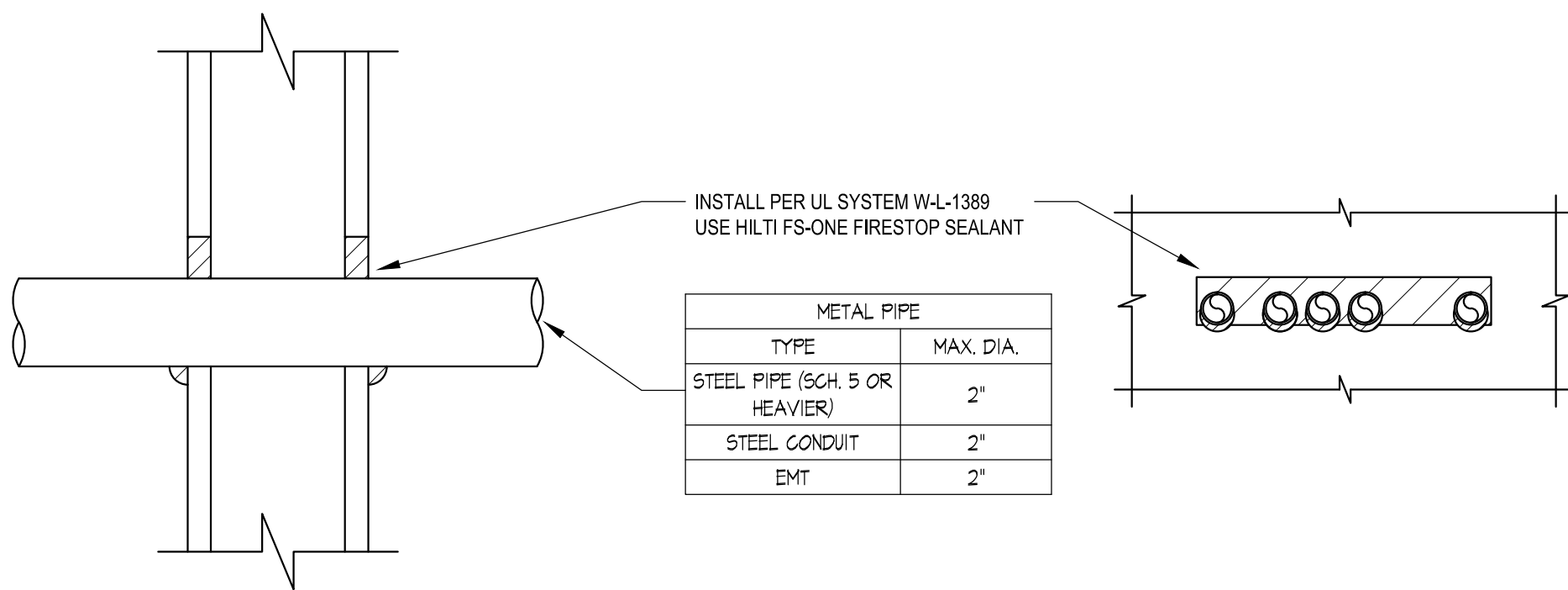
MIN. 4-1/2"

GLASS FIBER INSULATION

SHEET METAL DUCT
MAX. 60" X 36"

7 METAL DUCT (WITHOUT DAMPER)
THROUGH CONCRETE OVER METAL DECKING
Scale: NTS

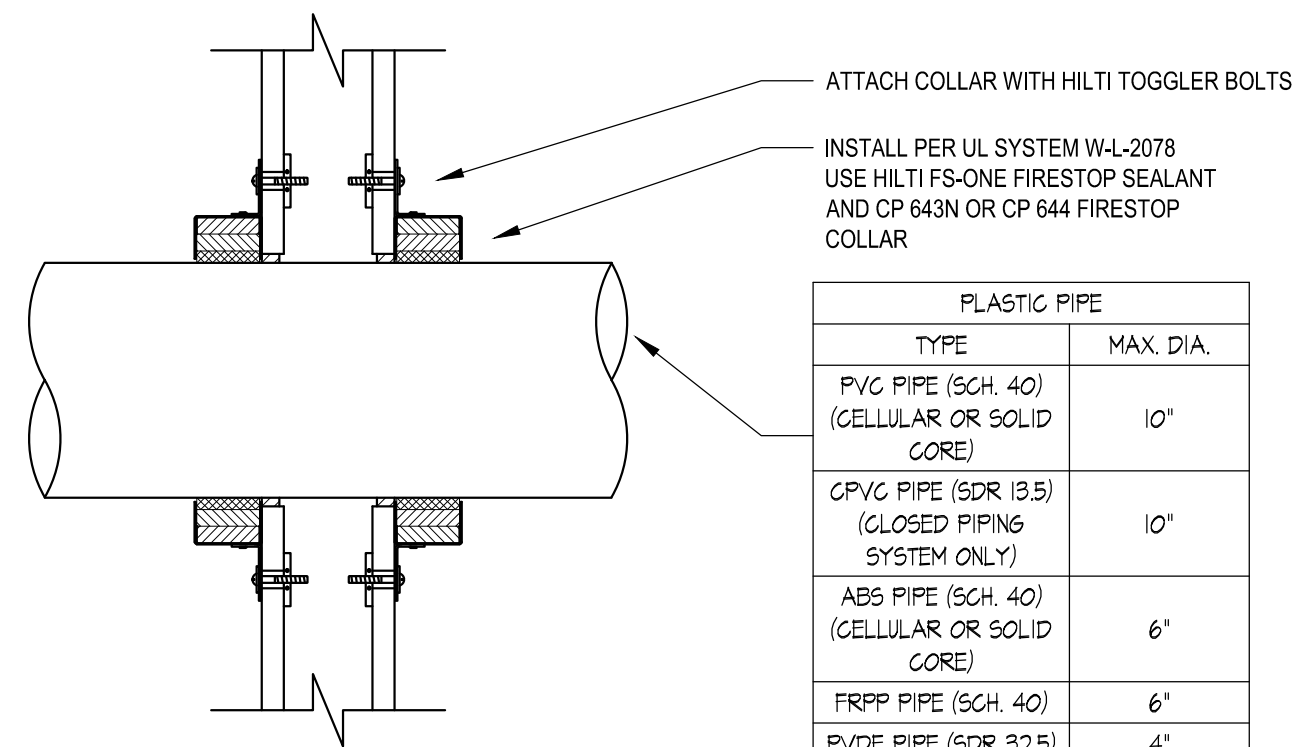
8 SHEET METAL DUCT WITH GLASS FIBER INSULATION
THROUGH CONCRETE OVER METAL DECKING
Scale: NTS



INSTALL PER UL SYSTEM W-L-1389
USE HILTI FS-ONE FIRESTOP SEALANT

METAL PIPE	
TYPE	MAX. DIA.
STEEL PIPE (SCH. 5 OR HEAVIER)	2"
STEEL CONDUIT	2"
EMT	2"

9 MULTIPLE METAL PIPES THROUGH GYPSUM WALL ASSEMBLY
Scale: NTS

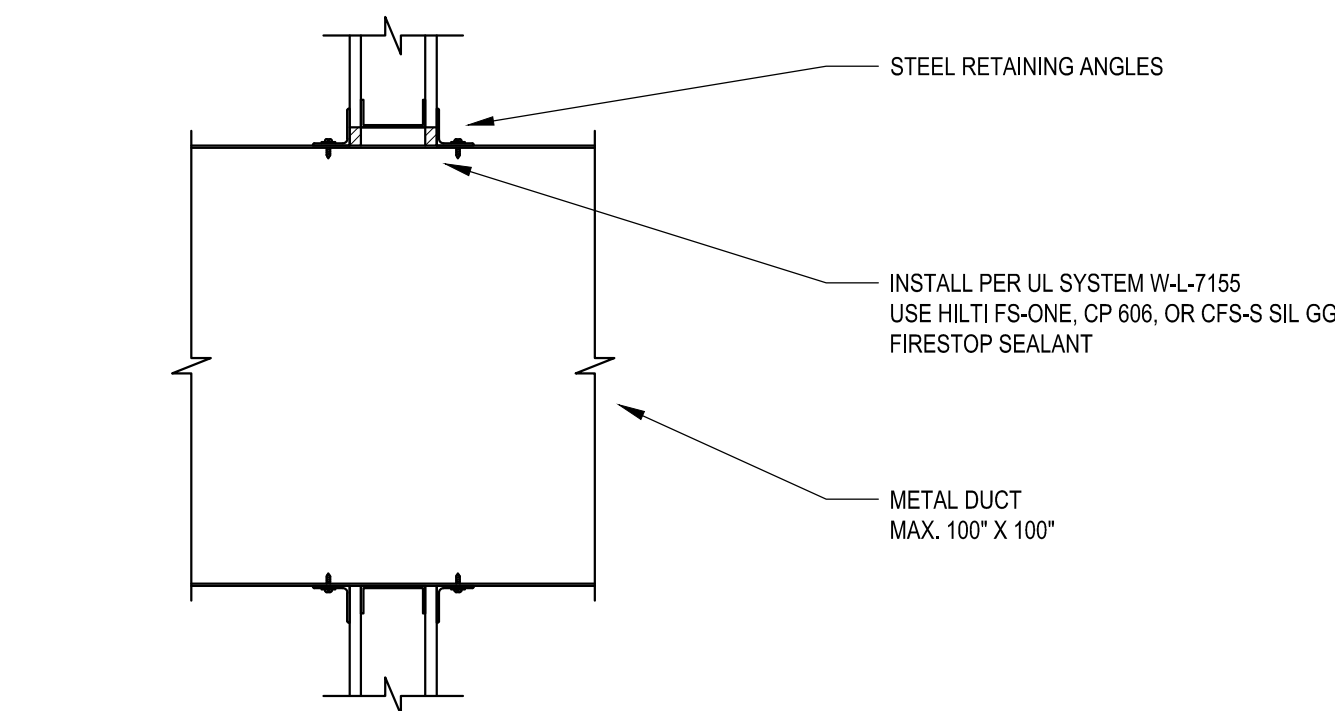


ATTACH COLLAR WITH HILTI TOGGLER BOLTS

INSTALL PER UL SYSTEM W-L-2078
USE HILTI FS-ONE FIRESTOP SEALANT
AND CP 643N OR CP 644 FIRESTOP
COLLAR

PLASTIC PIPE	
TYPE	MAX. DIA.
PVC PIPE (SCH. 40) (CELLULAR OR SOLID CORE)	10"
CPVC PIPE (SDR 13.5) (CLOSED PIPING SYSTEM ONLY)	10"
ABS PIPE (SCH. 40) (CELLULAR OR SOLID CORE)	6"
FRPP PIPE (SCH. 40)	6"
PVDF PIPE (SDR 32.5)	4"

10 PLASTIC PIPE THROUGH GYPSUM WALL ASSEMBLY
Scale: NTS

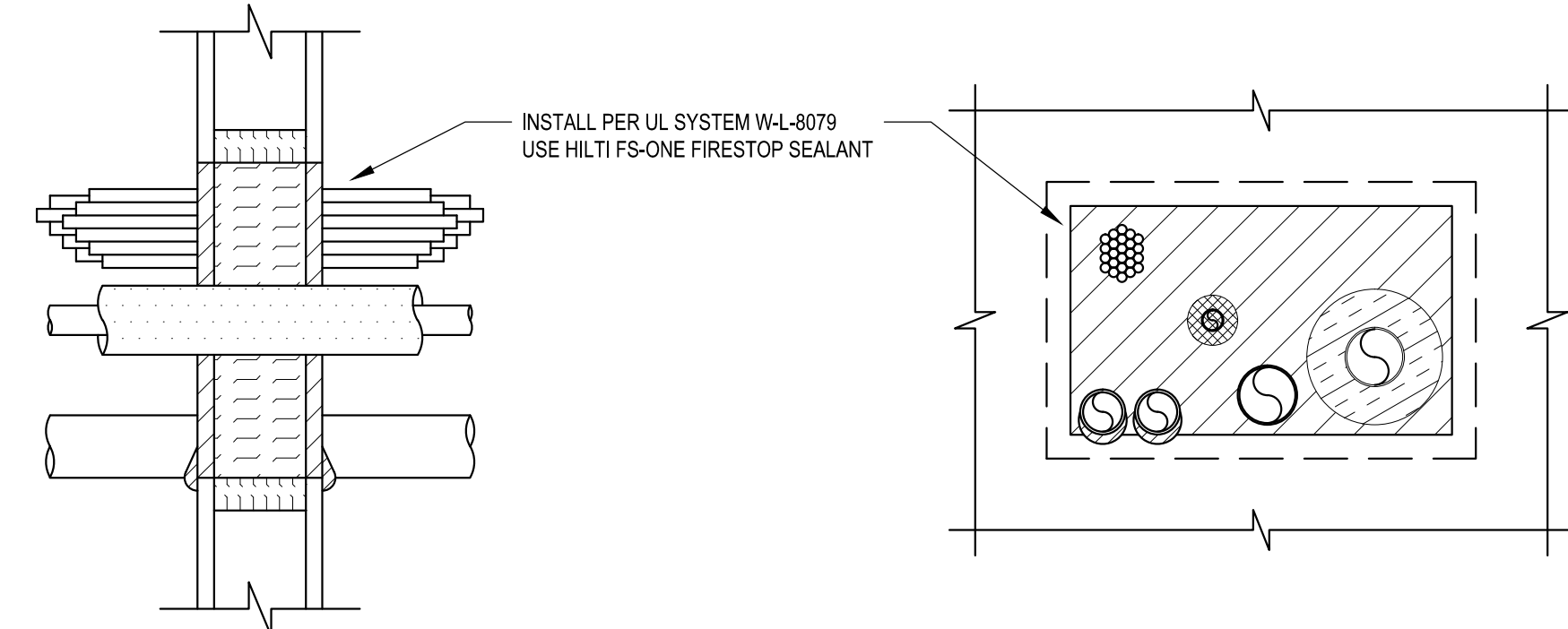


STEEL RETAINING ANGLES

INSTALL PER UL SYSTEM W-L-7155
USE HILTI FS-ONE, CP 608, OR CFS-S SIL GG
FIRESTOP SEALANT

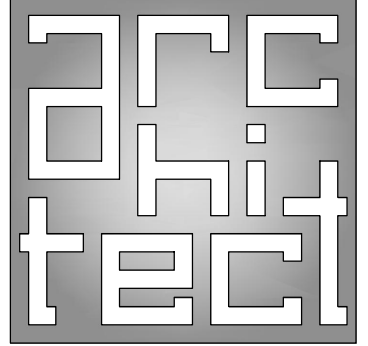
METAL DUCT
MAX. 100" X 100"

11 METAL DUCT THROUGH GYPSUM WALL ASSEMBLY
Scale: NTS



INSTALL PER UL SYSTEM W-L-8079
USE HILTI FS-ONE FIRESTOP SEALANT

12 MULTIPLE PENETRATIONS THROUGH GYPSUM WALL ASSEMBLY
Scale: NTS



ENIK MEHMETI

567 BROADWAY
MASSAPEQUA NY 11758
Tel: 516-809-5888
E-Mail: ingenik@gmail.com

COPYRIGHT 2022
THE OFFICE OF ENIK MEHMETI ARCHITECT
ALL RIGHTS RESERVED

THIS IS A VIOLATION OF C.T. STATE LAWS FOR ANY PERSON, UNLESS DIRECTED BY A REGISTERED ARCHITECT OR PROFESSIONAL ENGINEER TO ALTER ANY ITEM IN ANY WAY.

1. 01/10/2022 TO DOB

Nr. DATE DESCRIPTION

ISSUED

IMPROVEMENTS TO:

EXISTING

STORE

5 RIVER ROAD

WILTON C.T. 06897

Sh: B-, L-, Z-

RATED

PENETRATION

DETAILS

SEAL & SIGNATURE

DOB APPROVAL

COMM: 20211124

DESIGN BY: E.M.

DRAWING BY: E.M.

CHK BY: E.M.

STR BY: E.M.

CHK BY: E.M.

DWG No.:

A-501.00

APPLICATION No. DWG No.:

2021-001020 6 OF 06

SCALE: N.T.S.

SCALE: N.T.S.

SCALE: N.T.S.

SCALE: N.T.S.

SCALE: N.T.S

SCALE: N.T.S.

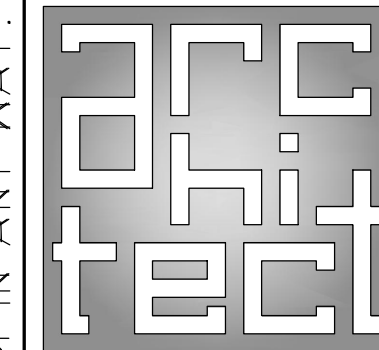
SCALE: N.T.S.

SCALE: N.T.S.

SCALE: N.T.S.

MAXIMUM HOLE SIZE W/ REINFORCING				
STUD SIZE	MAX. HOLE DEPTH (A)	MAX. HOLE LENGTH (B)	MIN. HOLE SPACING (C)	MIN. HOLE EDGE DIST. (D)
3 5/8" STUD	1 3/4"	6'	16"	10"
6" STUD	3"	6'	16"	10"
8" STUD	4"	8'	24"	10"
10" STUD	5"	10'	24"	10"
12" STUD	6"	12'	24"	10"

D O B A P P R O V A L



ENIK MEHMETI

567 BROADWAY
MASSAPEQUA NY 11756
Tel: 516-809-5888
E-Mail: ingenik@gmail.com

THE OFFICE OF ENIK MEHMETI ARCHITECTS
ALL RIGHTS RESERVE

1. 01/10/2022 TO DOB

Nr.	DATE	DESCRIPTION
ISSUED		

IMPROVEMENTS TO:

	EXISTING STORE
1. Name of the business	...
2. Address	...
3. Phone number	...
4. Description of the business	...
5. Description of the store	...
6. Description of the products	...
7. Description of the services	...
8. Description of the equipment	...
9. Description of the inventory	...
10. Description of the staff	...
11. Description of the customers	...
12. Description of the competition	...
13. Description of the market	...
14. Description of the industry	...
15. Description of the economy	...
16. Description of the culture	...
17. Description of the society	...
18. Description of the government	...
19. Description of the law	...
20. Description of the religion	...
21. Description of the education	...
22. Description of the health	...
23. Description of the environment	...
24. Description of the technology	...
25. Description of the science	...
26. Description of the art	...
27. Description of the music	...
28. Description of the literature	...
29. Description of the history	...
30. Description of the geography	...
31. Description of the climate	...
32. Description of the weather	...
33. Description of the time	...
34. Description of the space	...
35. Description of the matter	...
36. Description of the energy	...
37. Description of the force	...
38. Description of the motion	...
39. Description of the change	...
40. Description of the cause	...
41. Description of the effect	...
42. Description of the result	...
43. Description of the outcome	...
44. Description of the conclusion	...
45. Description of the summary	...
46. Description of the review	...
47. Description of the analysis	...
48. Description of the evaluation	...
49. Description of the comparison	...
50. Description of the contrast	...
51. Description of the similarity	...
52. Description of the difference	...
53. Description of the relationship	...
54. Description of the connection	...
55. Description of the link	...
56. Description of the bond	...
57. Description of the tie	...
58. Description of the join	...
59. Description of the union	...
60. Description of the combination	...
61. Description of the mixture	...
62. Description of the blend	...
63. Description of the mix	...
64. Description of the mix-up	...
65. Description of the mix-up	...
66. Description of the mix-up	...
67. Description of the mix-up	...
68. Description of the mix-up	...
69. Description of the mix-up	...
70. Description of the mix-up	...
71. Description of the mix-up	...
72. Description of the mix-up	...
73. Description of the mix-up	...
74. Description of the mix-up	...
75. Description of the mix-up	...
76. Description of the mix-up	...
77. Description of the mix-up	...
78. Description of the mix-up	...
79. Description of the mix-up	...
80. Description of the mix-up	...
81. Description of the mix-up	...
82. Description of the mix-up	...
83. Description of the mix-up	...
84. Description of the mix-up	...
85. Description of the mix-up	...
86. Description of the mix-up	...
87. Description of the mix-up	...
88. Description of the mix-up	...
89. Description of the mix-up	...
90. Description of the mix-up	...
91. Description of the mix-up	...
92. Description of the mix-up	...
93. Description of the mix-up	...
94. Description of the mix-up	...
95. Description of the mix-up	...
96. Description of the mix-up	...
97. Description of the mix-up	...
98. Description of the mix-up	...
99. Description of the mix-up	...
100. Description of the mix-up	...

5 RIVER ROAD
WILTON C.T. 06897
S:- B:- L:- Z:-

LIGHT GAUGE METAL FRAMING TYPICAL DETAILS

SEAL & SIGNATURE

COMM:	202112
-------	--------

DESIGN BY: E.M.

DRAWING BY:	E.M.
CHK BY	E.M.

CHK BY:	E.M.
STR BY:	E.M.

CHK BY:	E.M.
---------	------

DWG No.:

A-502.00

APPLICATION Nr	DWG Nr:
----------------	---------

2021-001020 7 OF 06



SCALE: N.T.S.



2021 03 10 20	00 01 00
---------------	----------

2021 03 10 20	00 01 00
---------------	----------