



# Wilton Library Project Proposal

August 2023

## **Proposed Project: Wilton Library Parking Lot Banners**

Our proposal is to create 16 double-sided permanent banners that would hang from existing poles in the Library Parking lot.

### **Project Specifications:**

Number of Banners: 16

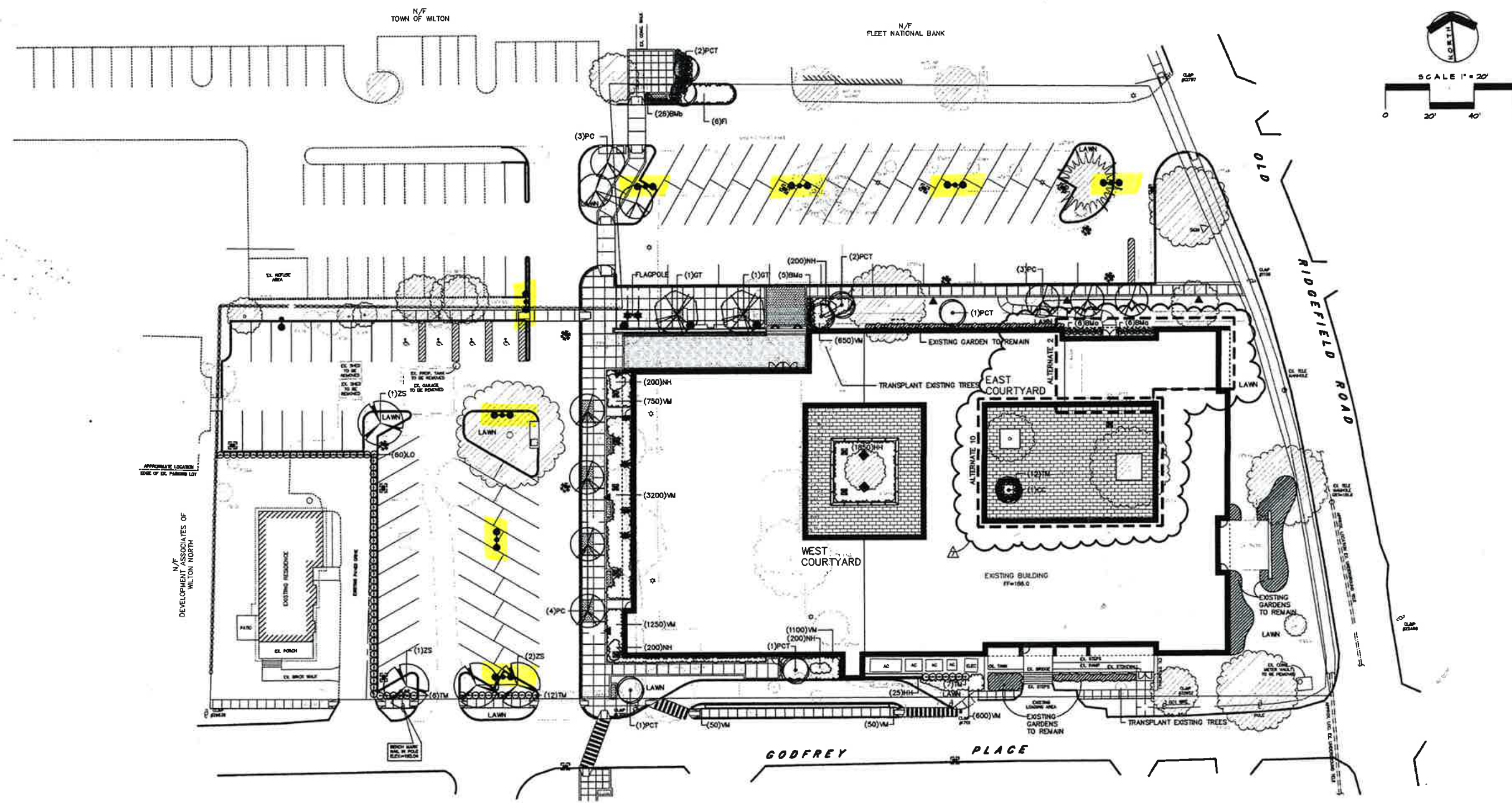
Dimensions: 24" x 54"

Location: Library parking lot

Timeframe: Permanent, year-round

### **Reason for Proposal:**

A direct reflection of the Library's branding, the banners would educate by communicating the Library's mission to "inform, enrich, connect and inspire our community" by using these very words on the banners themselves. Additionally, we believe the simple, artful design and vibrancy of the banners would encourage Library visitation and enhance the vitality of Wilton Center. These banners will be similar to the banners put up for our 125th Anniversary in 2020 which were very well received by the town. (See page 5)



TAI SOO KIM PARTNERS  
ARCHITECTS  
285 Farmington Avenue  
Hartford, Connecticut  
Tel: (860) 547-1970  
Fax: (860) 248-9865  
e-mail: tskim@tskim.com

ENVIRONMENTAL  
DESIGN ASSOCIATES P.C.  
1000 Main Street, Suite 200  
Hartford, Connecticut 06103  
Tel: (860) 521-1111  
Fax: (860) 521-1112  
e-mail: info@eda-hartford.com

# WILTON LIBRARY

## 137 OLD RIDGEFIELD ROAD

### WILTON, CONNECTICUT 06897

#### PLANTING & LIGHTING PLAN

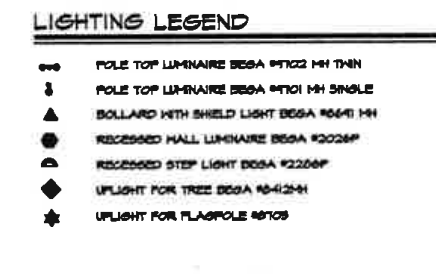
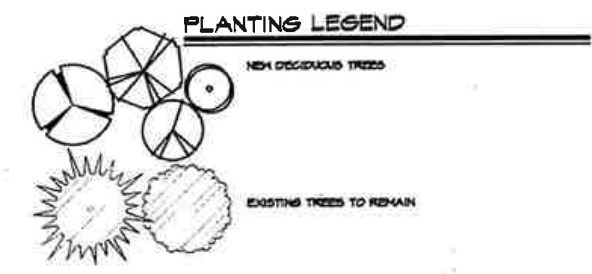
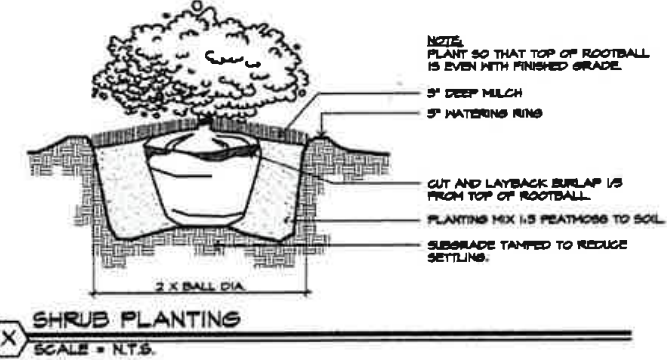
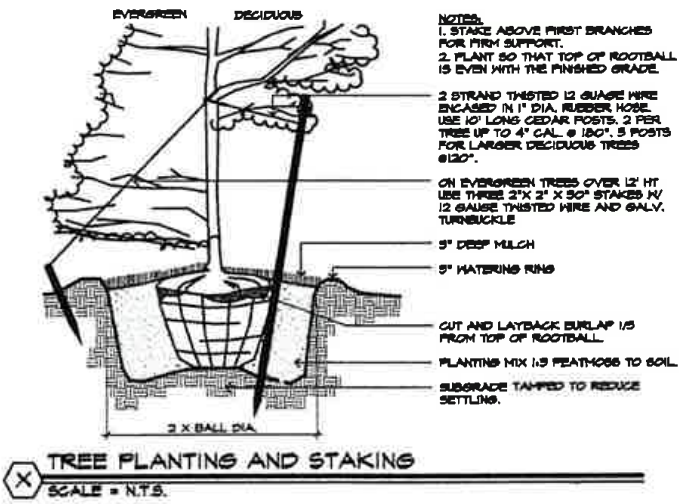
PROJECT NUMBER: 22001  
SCALE: 1" = 20'  
DATE: AUGUST 8, 2003

REVISIONS:  
1. 8-08-03 ISSUED TO PLANNING & ZONING  
2. 10-27-03 RE-DESIGNED TO P. & Z.  
3. 11-24-03 PLANTINGS PER CONSERVATION  
4. 01-21-04 REVISED & ISSUED FOR BIDS  
5. 04-30-04 REV. & ISSUED FOR BIDS  
6. 05-28-04 REV. PER TXK  
7. 08-15-04 REVISED PER TXK  
CHAFFIN: 09-13-04per

# L-1

#### PLANT LIST-ALL PROPOSED PLANT MATERIAL TO BE LOCATED IN FIELD BY LANDSCAPE ARCHITECT

QUAN.	KEY	BOTANICAL NAME	COMMON NAME	SIZE	REMARKS
DECIDUOUS TREES					
1	CC	Cercis canadensis	Southern Red Bud	3-2 1/2" cal.	848
2	BT	Buddleia fraxinifolia var. 'harlequin'	Butterfly Bush	3-2 1/2" cal.	848
3	PCF	Prunella canadensis 'Thundercloud'	Thundercloud Plum	3-2 1/2" cal.	848
4	PC	Prunella coccinea 'Chanticleer'	Chanticleer Cherry	3-2 1/2" cal.	848
5	ZS	Zelkova serrata	Japanese Zelkova	5-8 1/2" cal.	848
DECIDUOUS SHRUBS					
6	PL	Paniclea laevis	Border Paniclea	50-60" H.	848
7	LO	Ligustrum obtusifolium	Border Privet	50-60" H.	848
EVERGREEN SHRUBS					
8	SH	Shorea macrophylla var. 'lanceolata'	Hillside Shrub	18-24" H.	848
9	SH	Shorea macrophylla var. 'lanceolata'	Hillside Shrub	24-30" H.	848
10	TH	Thunbergia alata	Japanese Yew	24-30" H.	848
GRASSES, PERENNIALS, GEOPHYTES, ETC.					
11	GR	Grass	Grass	3" H.	8" O.C.
12	PP	Perennial	Perennial	3" H.	8" O.C.
13	GE	Geophyte	Geophyte	3" H.	8" O.C.
NOTES: ALL DISTURBED AREAS SHALL BE SEEDING AS LAWN UNLESS OTHERWISE NOTED. NEW LOCATION ON SITE FOR THE TREES TO BE TRANSPLANTED SHALL BE DETERMINED IN THE FIELD BY THE LANDSCAPE ARCHITECT.					



24"

54"



24"

54"



24"

54"



24"

54"



## 125th Anniversary Banners



WILTON LIBRARY

