

# WILTON POLICE STATION

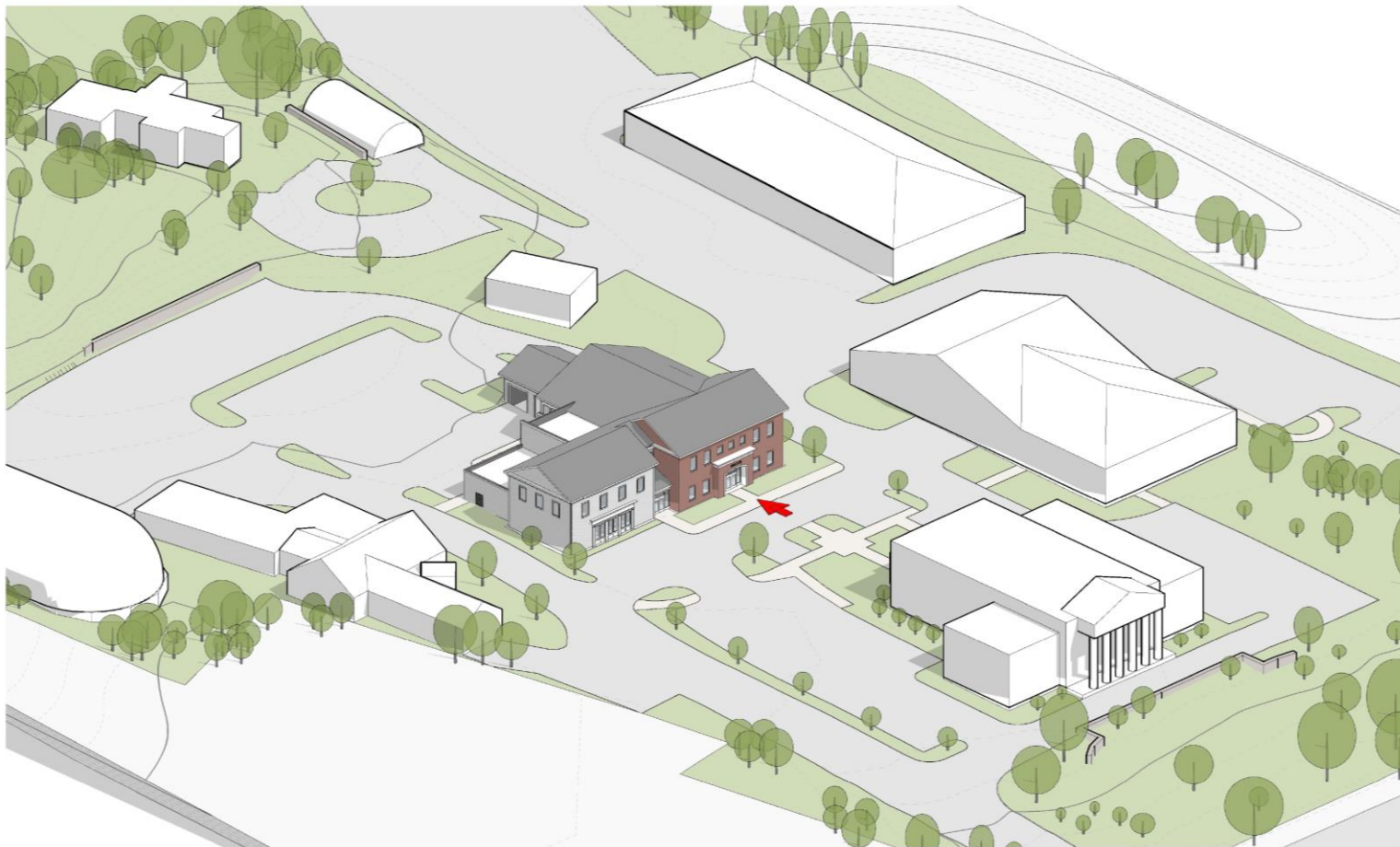
BOARD OF SELECTMEN

TOWN OF WILTON, CONNECTICUT



OCTOBER 2021

**Tecton**  
ARCHITECTS



PERSPECTIVE OF MUNICIPAL CAMPUS



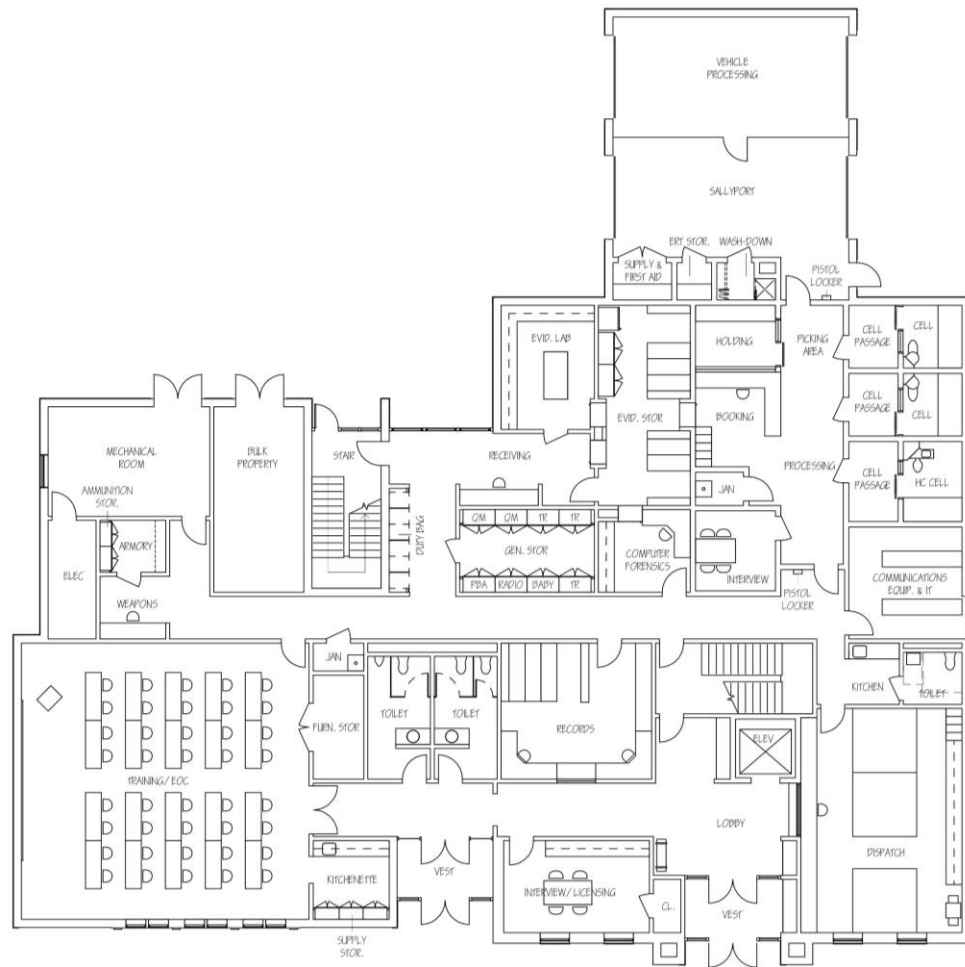
.....

PERSPECTIVE OF POLICE STATION

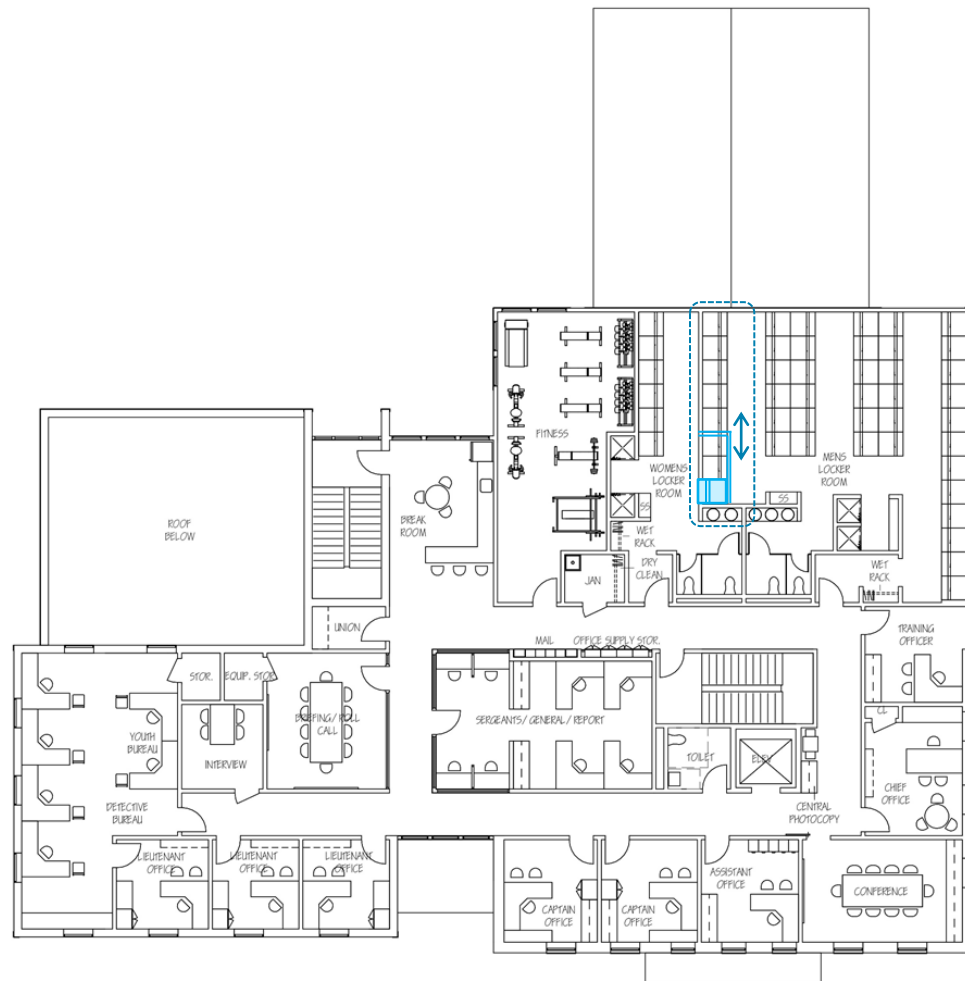
DANBURY RD (RT. 7)



SITE PLAN



MAIN FLOOR PLAN



UPPER FLOOR PLAN





**WEST ELEVATION (VIEW FACING TOWN HALL)**



**SOUTH ELEVATION (VIEW FACING FIRE AND DPW)**

.....

CONCEPTUAL ELEVATIONS



**EAST ELEVATION (VIEW FACING THE REAR OF THE SITE)**



**NORTH ELEVATION (VIEW FACING ANNEX)**

.....

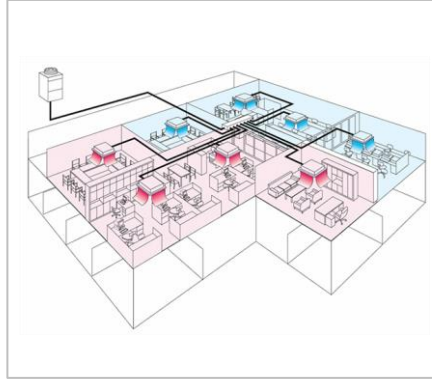
CONCEPTUAL ELEVATIONS



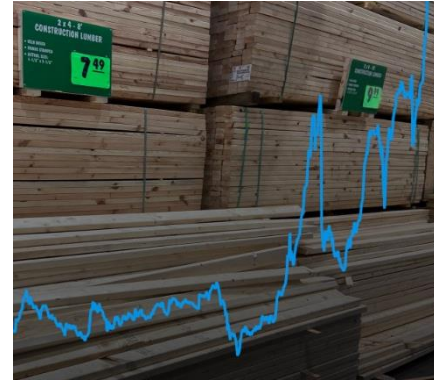
## SUPPLY CHAIN INTERRUPTIONS



## ADAPTIVE DESIGN RESPONSES



## ESCALATION OF MATERIAL COSTS



## LIMITATIONS ON LABOR FORCE



.....  
COVID IMPACT ON MARKET CONDITIONS

# A COLLABORATIVE TEAM



**JEFF MCELRAVY**

AIA

Principal in Charge  
Director of Public Safety  
Tecton Architects

*IACP Member*

*CPCA Associate Member*

*MCOPA Associate Member*



**REBECCA HOPKINS**

AIA, NCARB, EDAC

Project Manager  
Tecton Architects

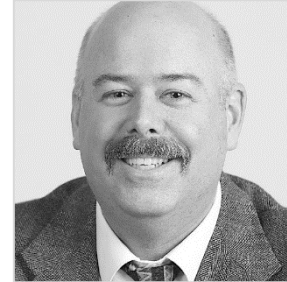
*IACP Member*



**JOHN VITTI**

RA, LEED AP

Project Architect  
Tecton Architects



**DENNIS BROWN**

Production Leader  
Tecton Architects



**RENEE PARRY**

Support Staff  
Tecton Architects

## CONSULTANTS

---

### **CONSULTING ENGINEERING SERVICES (CES)**

MEP Engineering, Fire  
Protection, IT

### **FUSS & O'NEILL**

Civil Engineering,  
Landscape Architecture

### **PES STRUCTURAL ENGINEERS**

Structural Engineering

### **CONSTRUCTION COST SOLUTIONS**

Cost Estimating