

PROJECT NO. 161-142
BRIDGE NO. 04975

Lovers Lane over Comstock Brook

Wilton, Connecticut

Architectural Review Board Meeting - September 2022

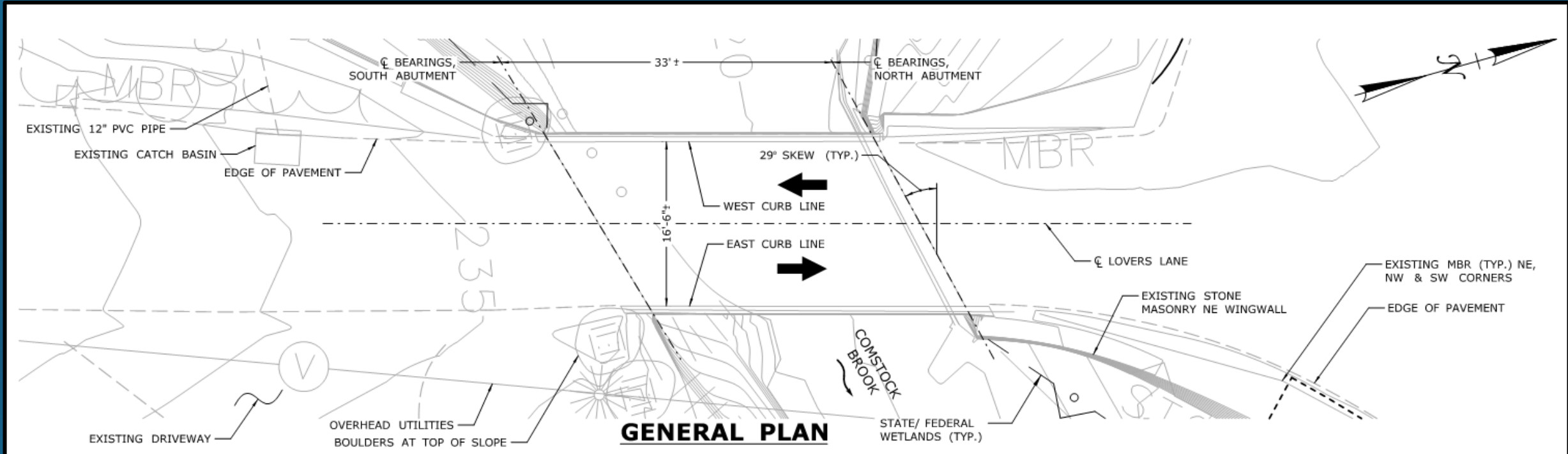
Historic District & Historic Property Commission – September 2022



PROJECT SITE LOCATION

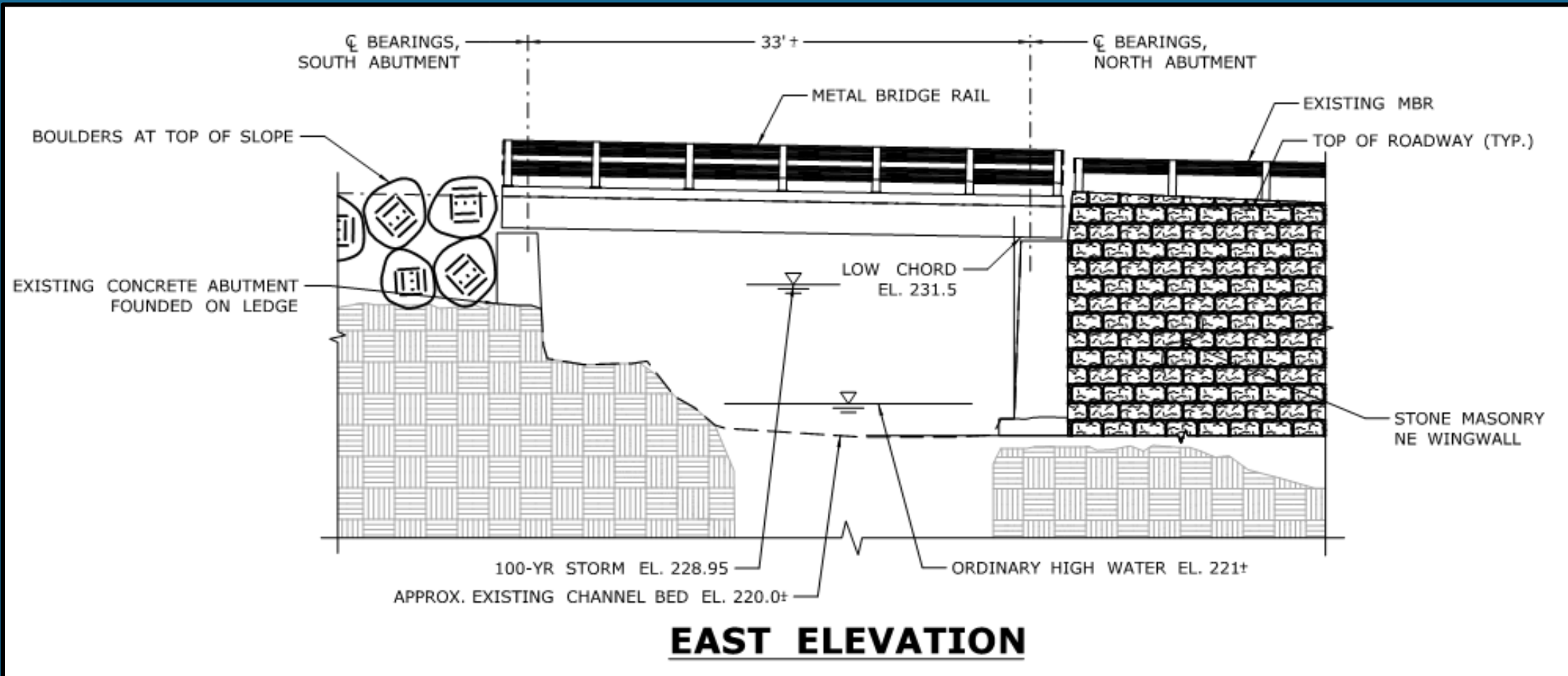


EXISTING PLAN



Year Built - 1930
Span Length – 33'
Roadway Width – 16' 6"

EXISTING ELEVATION



EXISTING SITE PHOTOS



Upstream Face of Bridge



Downstream Face of Bridge

EXISTING SITE PHOTOS



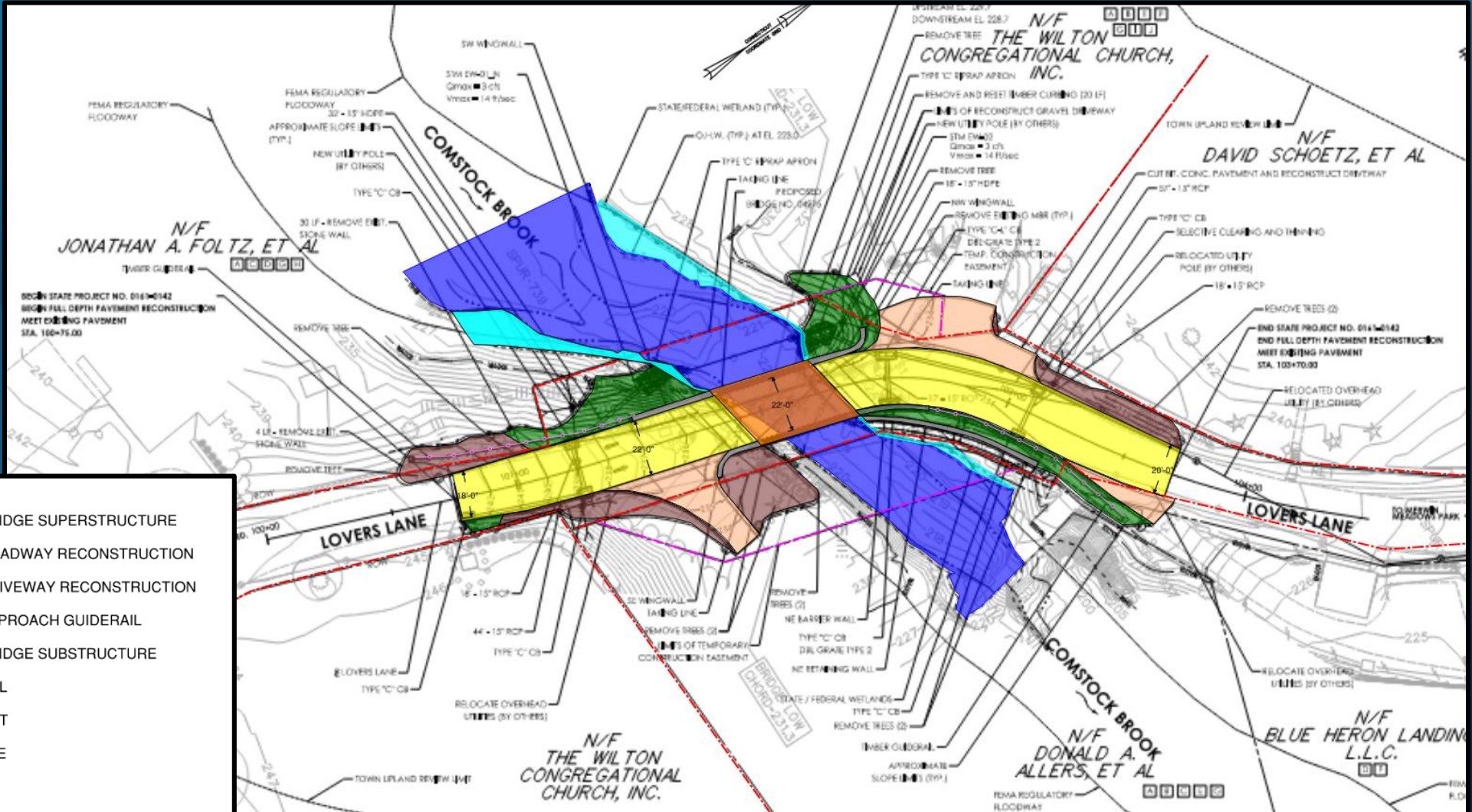
North Approach
(Looking South)



South Approach
(Looking North)



PROPOSED PLAN

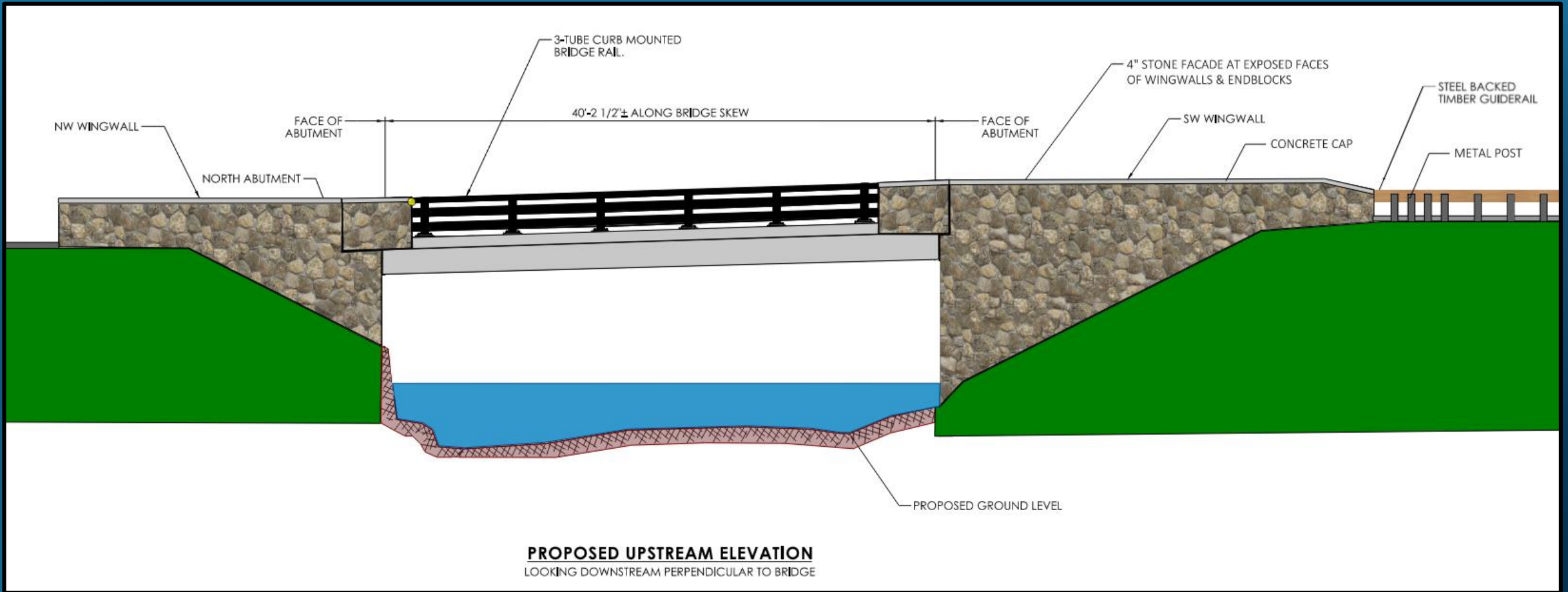


LEGEND:

- PROPOSED BRIDGE SUPERSTRUCTURE
- PROPOSED ROADWAY RECONSTRUCTION
- PROPOSED DRIVEWAY RECONSTRUCTION
- PROPOSED APPROACH GUIDERAIL
- PROPOSED BRIDGE SUBSTRUCTURE
- PROPOSED FILL
- PROPOSED CUT
- WATERCOURSE
- WETLANDS
- R.O.W. LINE
- TEMPORARY CONSTRUCTION EASEMENT



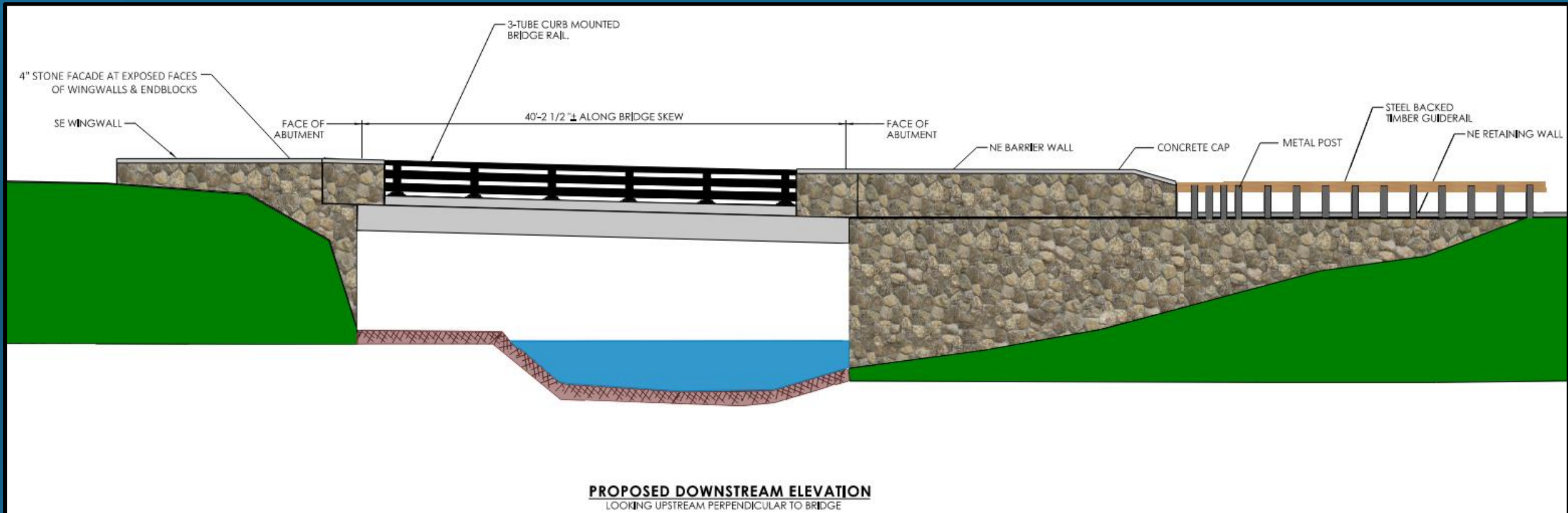
PROPOSED UPSTREAM BRIDGE ELEVATION



Stone – “New England Mosaic” or Equal

Bridge Rail Color – Black

PROPOSED DOWNSTREAM BRIDGE ELEVATION

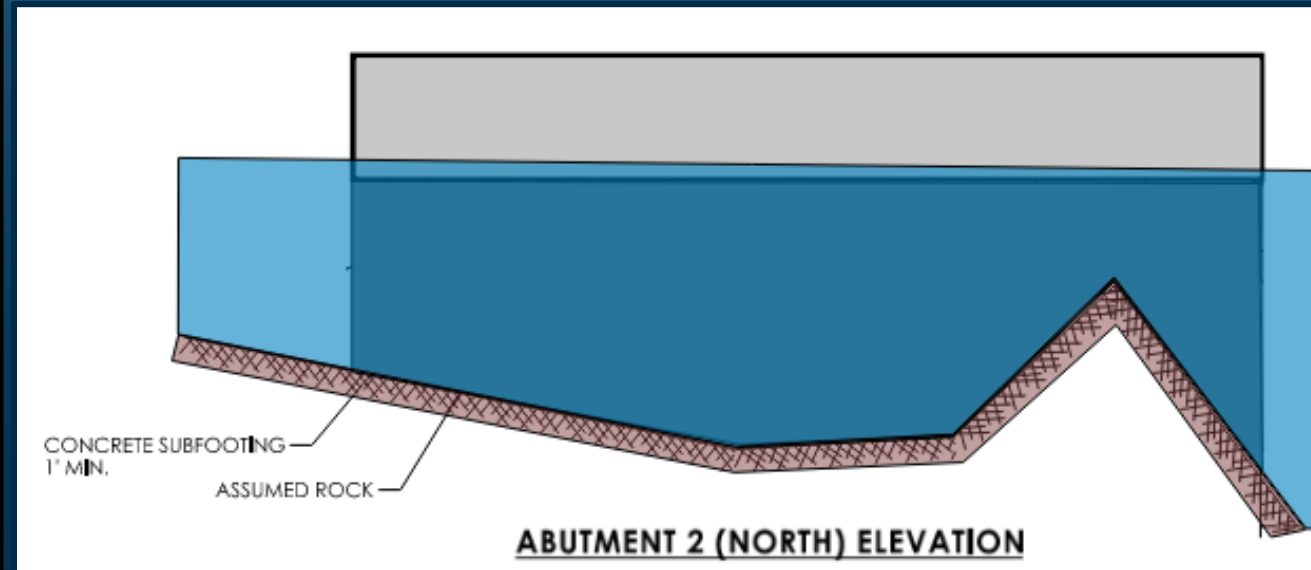
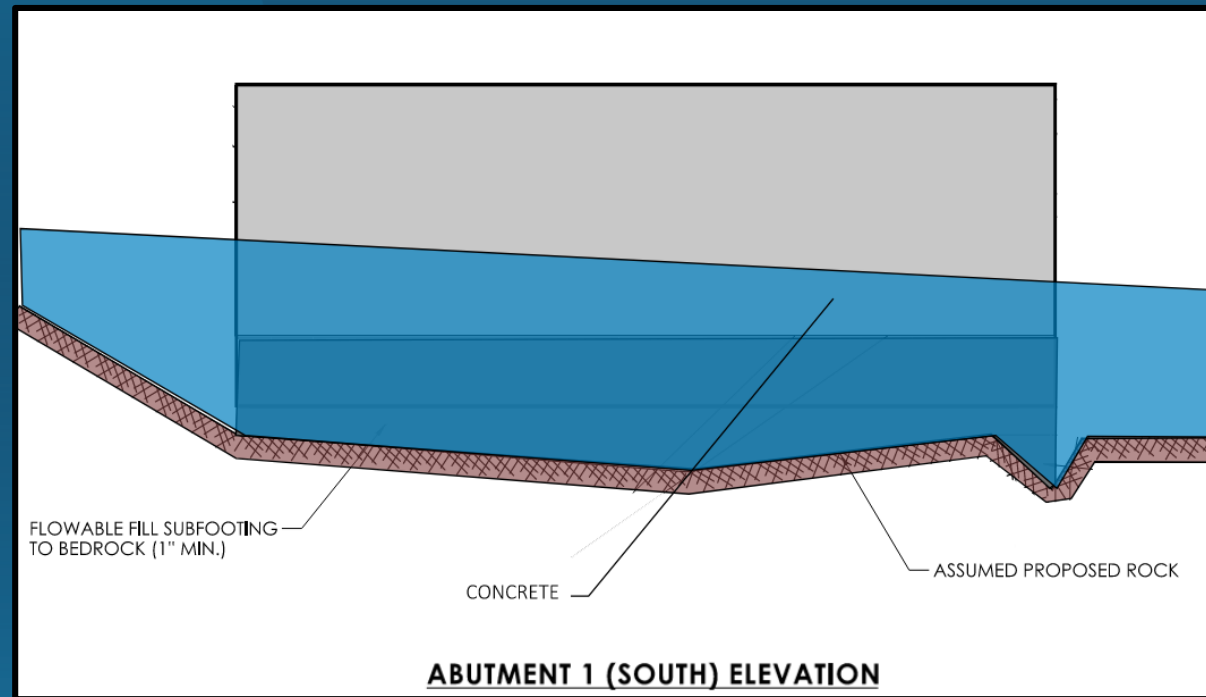


Stone – “New England Mosaic” or Equal

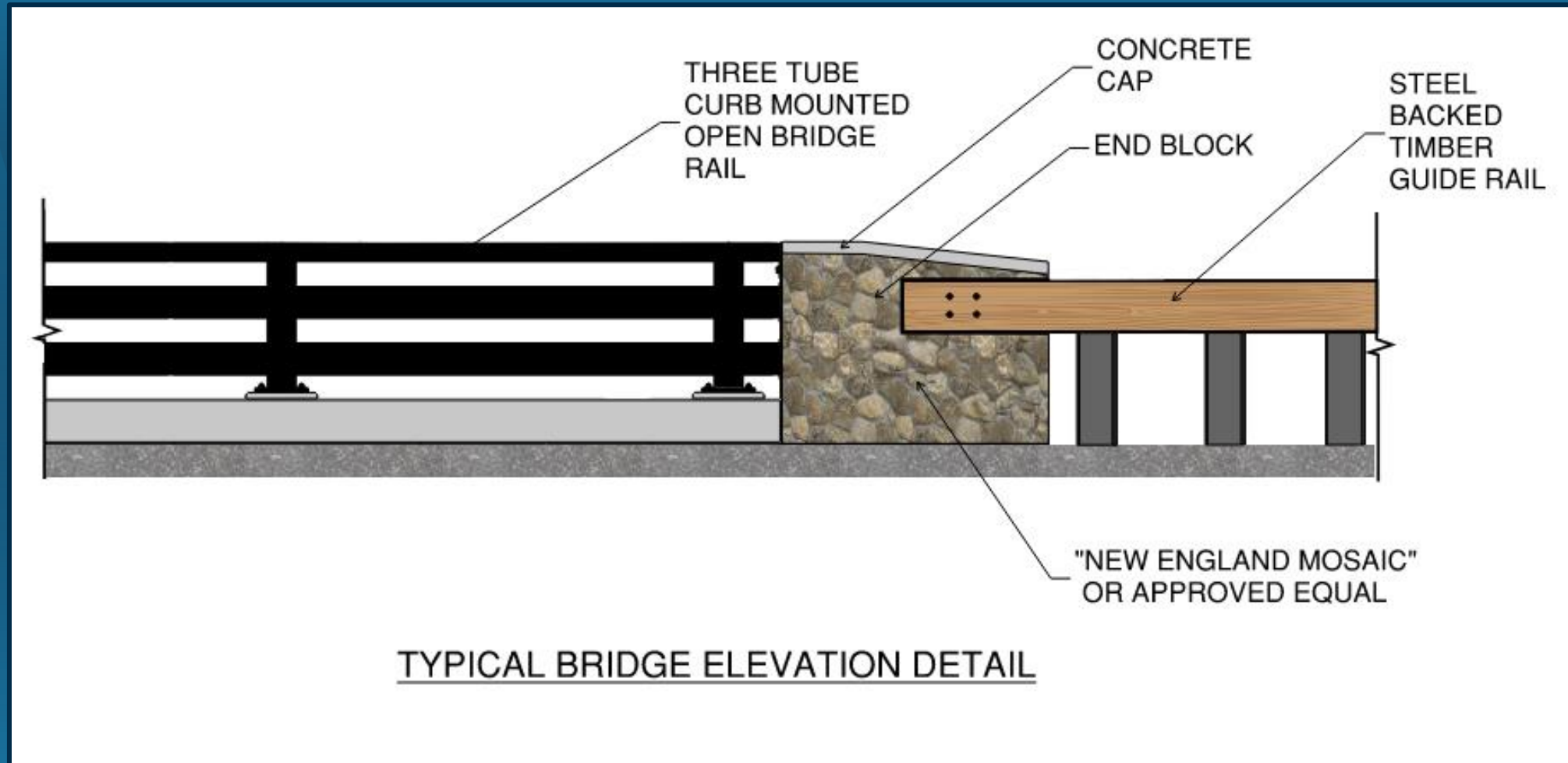
Bridge Rail Color – Black

PROPOSED ABUTMENT ELEVATIONS

- Abutment elevations under proposed bridge

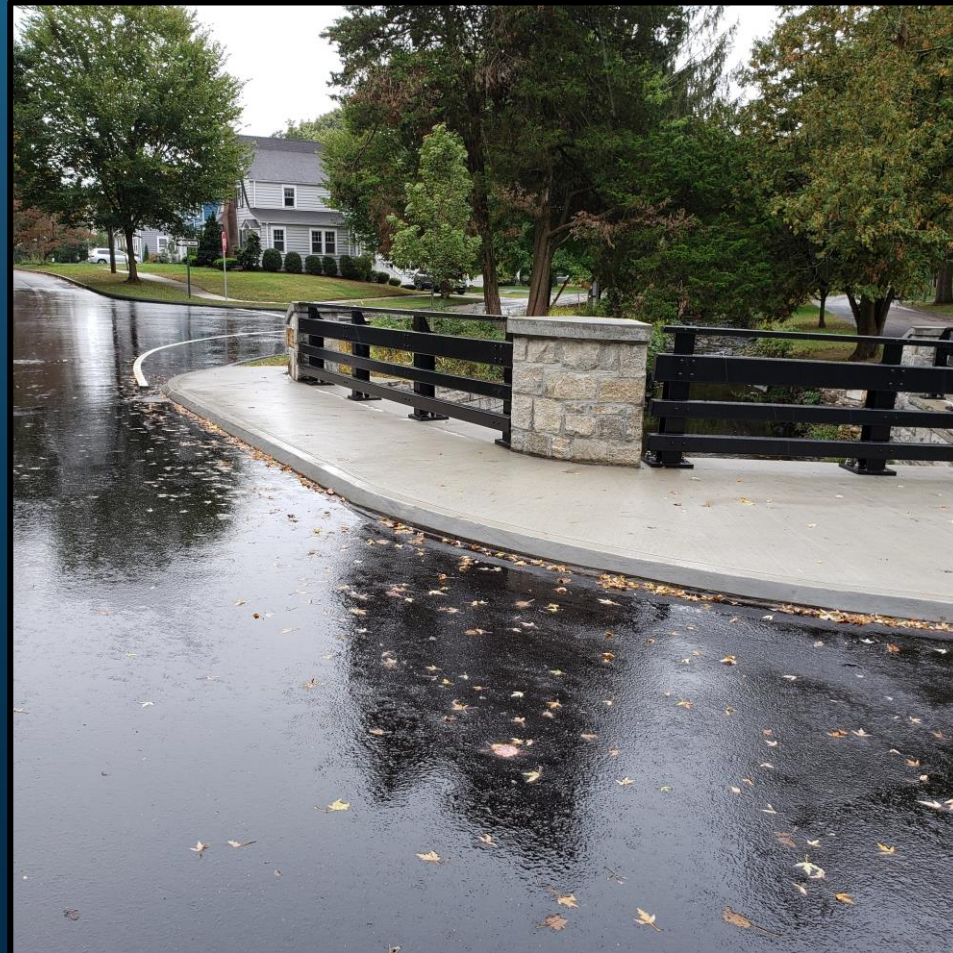


PROPOSED BRIDGE ELEVATION DETAIL



EXAMPLE PROJECT PHOTOS

- Depicts a Bridge with stone facing and black colored open metal bridge rail.
- Similar open metal bridge detail to be included at Lovers Lane Bridge



EXAMPLE PROJECT PHOTOS

- Depicts timber guiderail with metal posts
- Similar detail to be included at NE & SW Wingwalls at Lovers Lane Bridge



EXAMPLE PROJECT PHOTOS

- Depicts timber guiderail attachment to concrete end block with masonry facing
- Similar detail to be included at NE & SW Wingwalls at Lovers Lane Bridge



EXAMPLE PROJECT PHOTOS

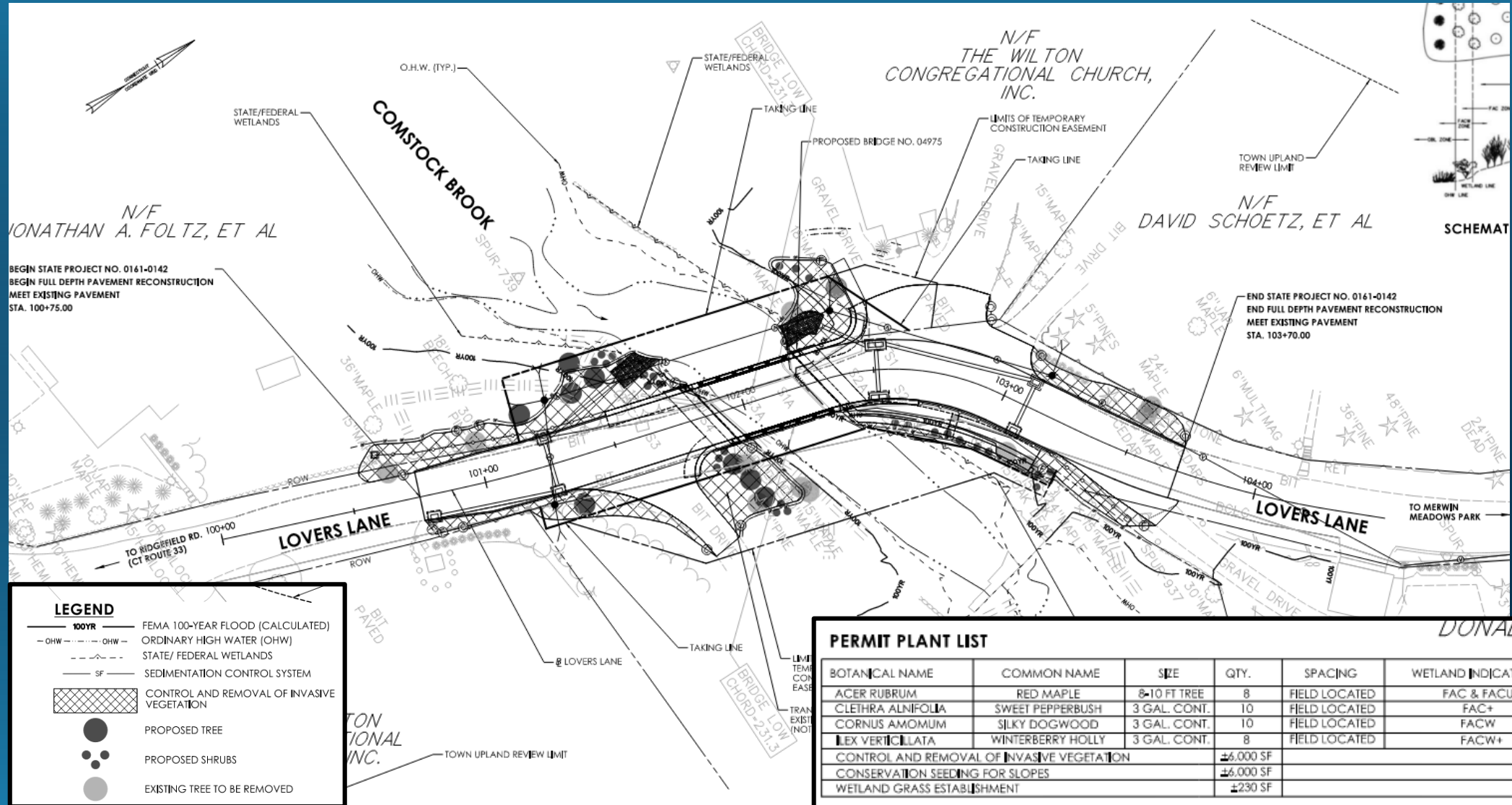
- Depicts end blocks/barrier walls and wingwalls with masonry facing on sides and concrete cap on top
- Similar detail to be included at Lovers Lane Bridge abutments, wingwalls & barrier walls
- Stone type to be “New England Mosaic” or approved equal



PICTURE SAMPLE OF “NEW ENGLAND MOSAIC”



LANDSCAPING PLAN



LEGEND

- 100YR FEMA 100-YEAR FLOOD (CALCULATED)
- OHW ORDINARY HIGH WATER (OHW)
- STATE/ FEDERAL WETLANDS
- SF SEDIMENTATION CONTROL SYSTEM
- CONTROL AND REMOVAL OF INVASIVE VEGETATION
- PROPOSED TREE
- PROPOSED SHRUBS
- EXISTING TREE TO BE REMOVED

PERMIT PLANT LIST

BOTANICAL NAME	COMMON NAME	SIZE	QTY.	SPACING	WETLAND INDICATOR
ACER RUBRUM	RED MAPLE	8-10 FT TREE	8	FIELD LOCATED	FAC & FACU
CLETHRA ALNIFOLIA	SWEET PEPPERBUSH	3 GAL. CONT.	10	FIELD LOCATED	FAC+
CORNUS AMOMUM	SILKY DOGWOOD	3 GAL. CONT.	10	FIELD LOCATED	FACW
ILEX VERTICILLATA	WINTERBERRY HOLLY	3 GAL. CONT.	8	FIELD LOCATED	FACW+
CONTROL AND REMOVAL OF INVASIVE VEGETATION			±6,000 SF		
CONSERVATION SEEDING FOR SLOPES			±6,000 SF		
WETLAND GRASS ESTABLISHMENT			±230 SF		

ADDITIONAL PROJECT INFORMATION

Estimated Construction Cost:

- \$3.1 Million

Easement Coordination

- Begin Fall 2022/Winter 2023

Construction Duration

- Begin after easement coordination

THANK YOU FOR YOUR TIME.

QUESTIONS?