

WILTON



## DISTRIBUTION TREE RELIABILITY



TOTAL MILES SCHEDULED

**15.2**

TOWN TOTAL

**178.9**

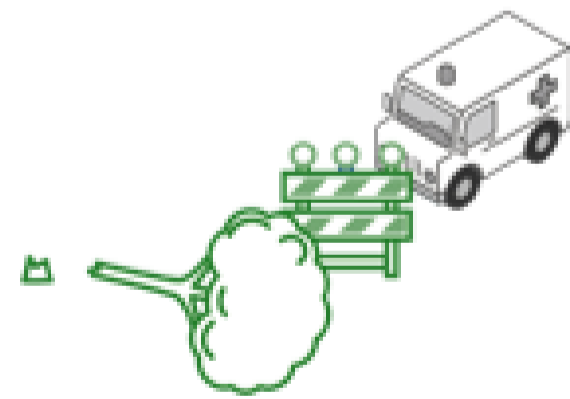


BACKBONE MILES SCHEDULED

**1.5**

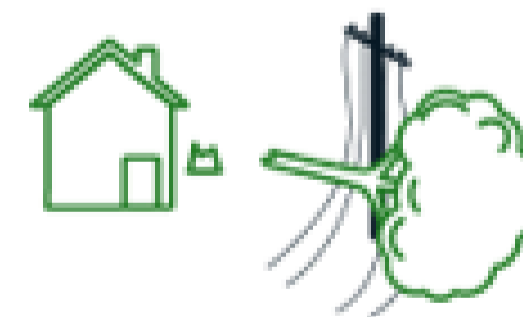
TOWN TOTAL

**42.9**



BLOCKED ROADS (2018-2022)

**202**



CUSTOMER REFUSALS & LIGHT TRIMS  
(2018-2022)

**103**

## TREE RELIABILITY 2022

CUSTOMERS SERVED

**7,594**

PERCENT TREE-RELATED OUTAGES

**51%**

OUTAGES

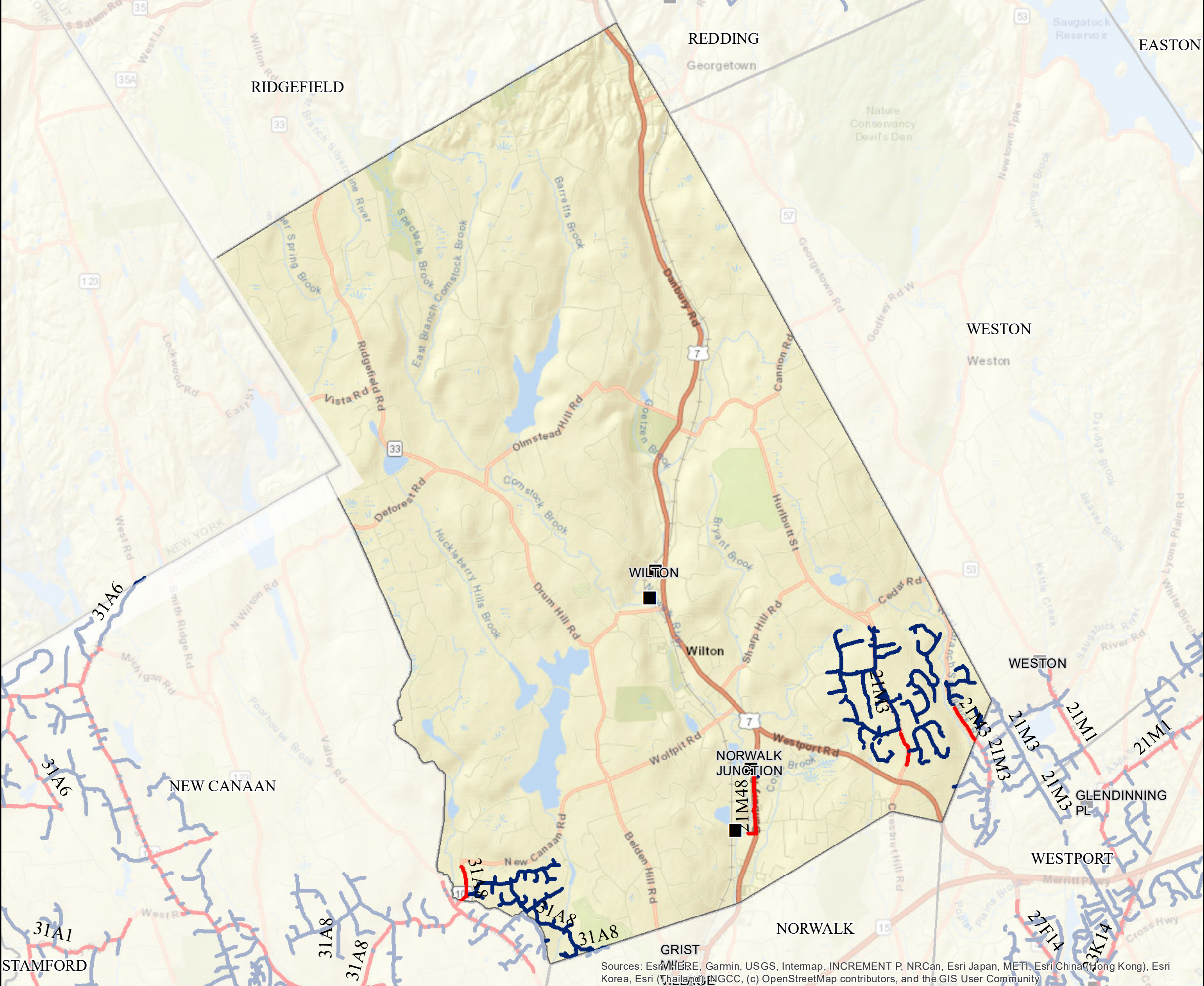
**450**

CUSTOMERS IMPACTED

**9,250**

MINUTES CUSTOMERS IMPACTED

**1,157,922**



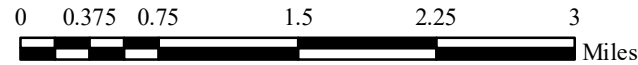
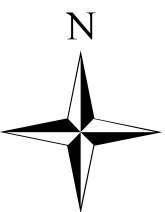
# WILTON

## OH Primary 2023 Trimming

- Backbone Maintenance Trimming
- Scheduled Maintenance Trimming
- Substations
- Town Boundary

### Town Mileage Summary

BB METT:	1.52
SMT:	13.71
<b>Total:</b>	<b>15.23</b>



PROPRIETARY INFORMATION: The material contained on the Overhead Distribution Circuit Map shall be considered proprietary to Eversource (ES), and Users (which shall be defined as any person or entity who has received the Map through sale, purchase, exchange gift, or otherwise) shall keep it in confidence and shall not furnish or disclose it to any third party without the prior written permission of Eversource.

Date: 6/20/2022

Sources: Esri HERE, Garmin, USGS, Intermap, INCREMENT P, NRCan, Esri Japan, METI, Esri China (Hong Kong), Esri Korea, Esri (Thailand), NGCC, (c) OpenStreetMap contributors, and the GIS User Community