

A great day at work
every day



Our mission is to help people have a great day at work



Global network access



Professional team to support you everyday



Wide choice

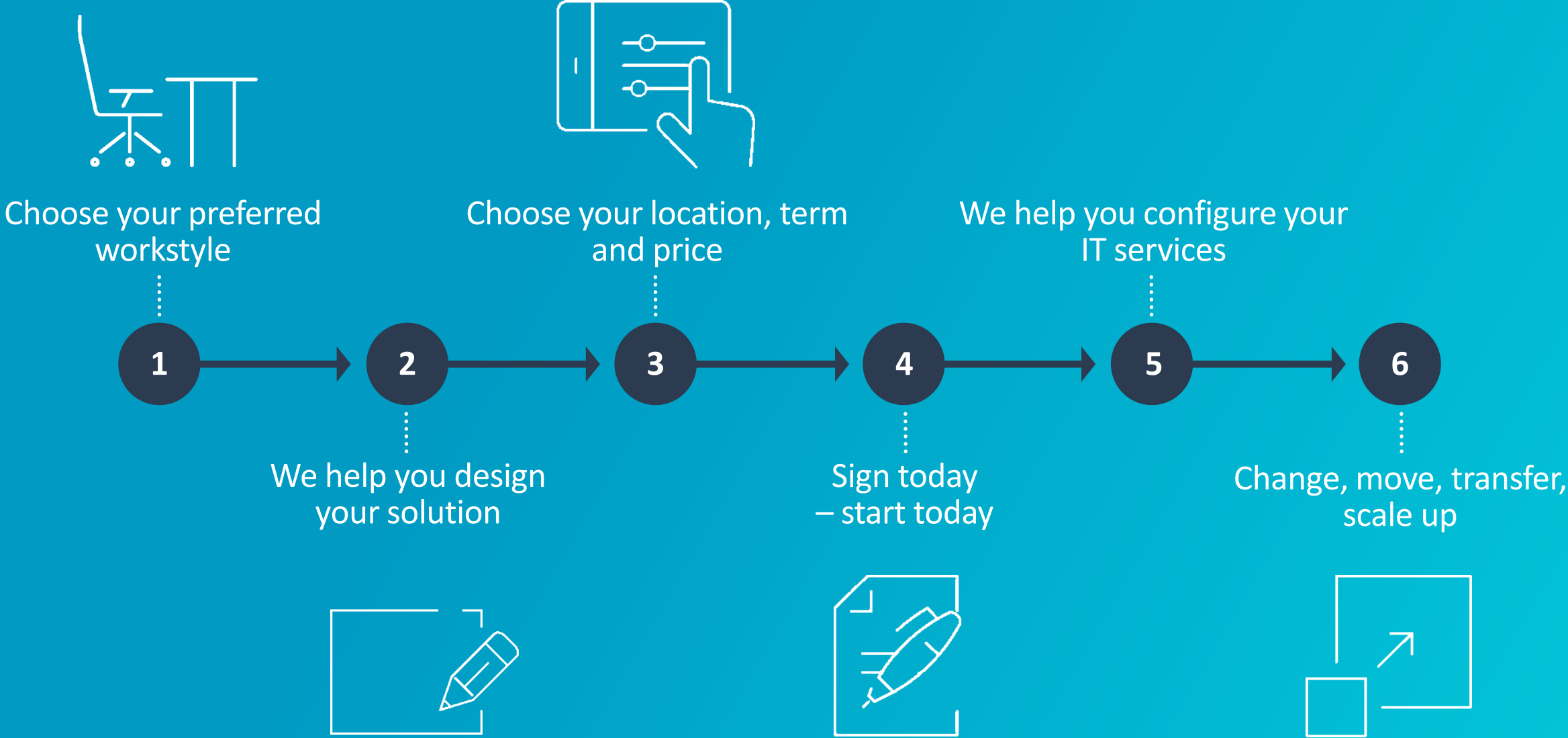


Easy to use and manage



Everything is included

We have made it easy



Workstyles to support you



Flexible solutions for each and every customer

John is a sole proprietor who needs

A professional business address

Support with call answering



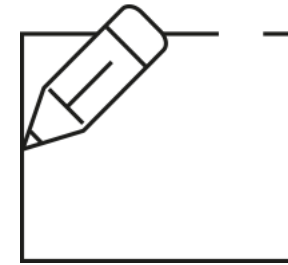
He starts with our virtual office solution and signs up for a membership plan

- ✓ As his colleague needs a professional drop-in location to work from when travelling



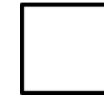
John's business thrives so he hires two more people and adds a coworking desk for each person in a location close to their house:

- ✓ As they need professional workspace access daily



John's team started having a great day at work and in a month moved to a spacious, private office which John:

- ✓ Designed and customised
- ✓ Personally selected the services they needed



John's company expanded and signed for offices in other regions via the App. John now has:

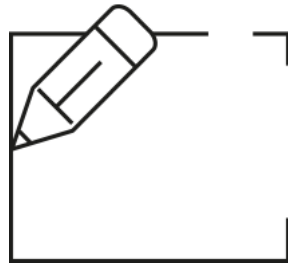
- ✓ Access to the most suitable solutions adapted to the unique workstyle of each team member

Easy to set up and start using




Company 'A Ltd' is a company that...

Has 3 employees

Is looking for ability to scale-up quickly



IWG helped 'A Ltd' to design the right solution for each type of their workers

-  1 x Homeworker
-  1 x Business traveler
-  1 x Office user

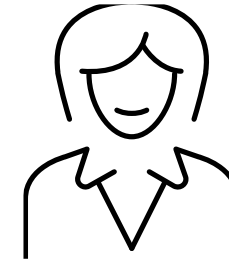



'A Ltd' has signed up

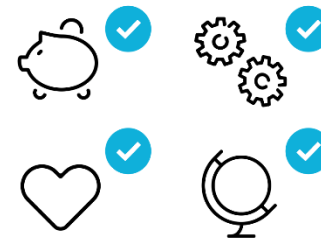
ORDER FORM

Office
1 person

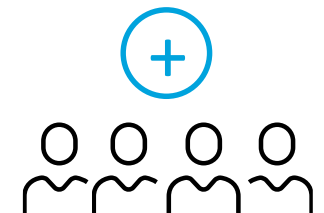
Membership
2 people



'A Ltd' started having a great day at work



Two months later 'A Ltd' hired 4 new people and expanded to a bigger office



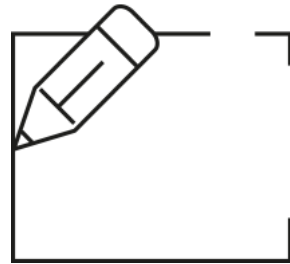
Easy to set up and start using

Company 'B Ltd' is a company that...

Has 67 employees

Is looking to redistribute their workforce

Is reducing their space in their current HQ and moving to flexible solutions



IWG helped 'B Ltd' to design the right solution for each type of their workers



17 x Homeworkers



10 x Business travellers



10 x Office users

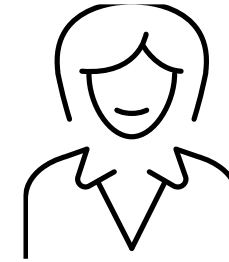



'B Ltd' has signed up

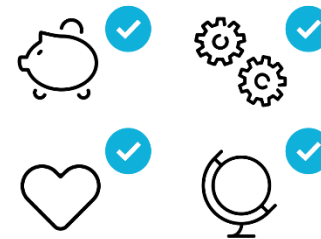
ORDER FORM

Office
20 people

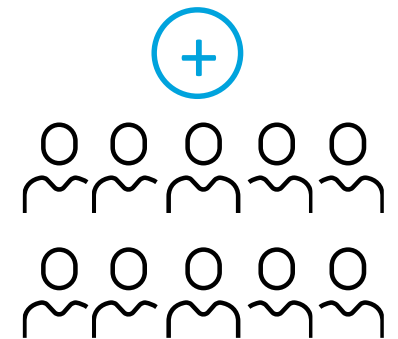
Membership
10 people

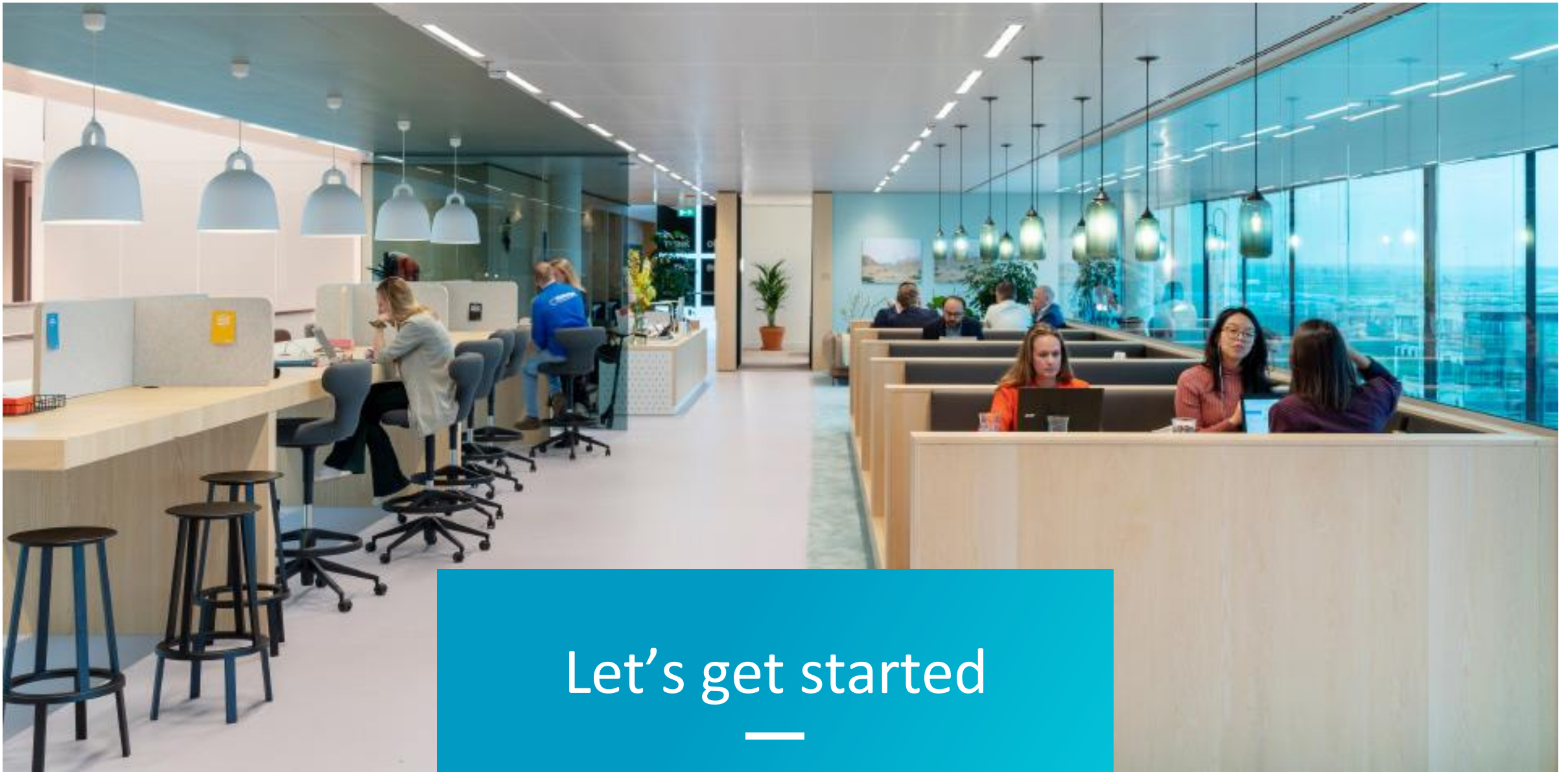


'B Ltd' started having a great day at work



Two months later 'B Ltd' hired 10 new people in a new city





Let's get started



Our brands



Growing network of convenient locations for freelancers and major businesses

Full range of spaces; offices, meeting rooms, co-working



Extensive geo coverage across cities, towns and suburbs

Wide variety of space sizes

Specializing in small, private offices and co-working areas



200 city centre locations

Floor templates from 2,000 to 10,000 sqm.

Large co-working with opportunities to create customised client areas

Modern, entrepreneurial feel



Premium city centre brand

Mixture of private offices and co-working spaces

Ability to create large, branded, customized client areas

Corporate environment



High-end environment for senior-level executives

Prestigious locations and design

Combination of work and leisure facilities

Country club feel

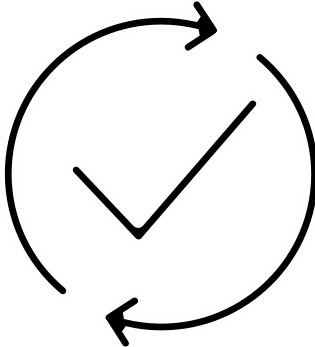


How does the pricing work?

Workstyles at the best price



Everything included



Elements that build the price:

Type of solution



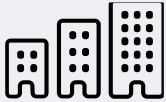
A variety of tailored solutions

Term



Longer term = lower price

Type of size & space



From team rooms to suites

Location



From budget to prestige locations

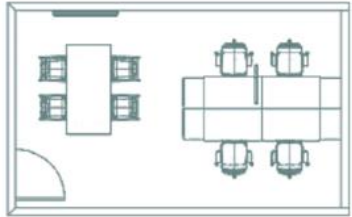
What's included with your office

 <h3>Facilities</h3> <p>Customised workspace Business lounges & breakout areas Kitchen & utilities</p>	 <h3>IT and Security</h3> <p>Business internet Constant Wifi access Security protection</p>	 <h3>Professional support</h3> <p>Dedicated community team Administrative support Printing & scanning</p>	 <h3>Productive workspace</h3> <p>Workstyle choices Ergonomic furniture Design your office</p>
 <h3>Facility management</h3> <p>Cleaning & Maintenance 24/7 support desk Safety & guidelines</p>	 <h3>Global community</h3> <p>Access to global network Networking Events</p>	 <h3>Flexibility</h3> <p>Free relocation Flexible term 24/7 access</p>	

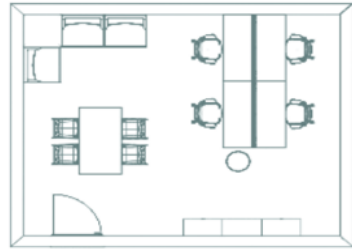
Design your office

Design ideas

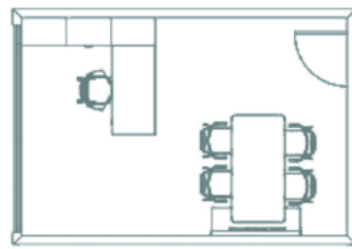
Here are some examples of how our customers use their space to fulfil their business needs



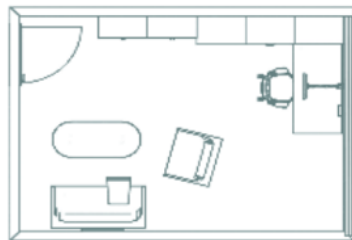
Team Office for four



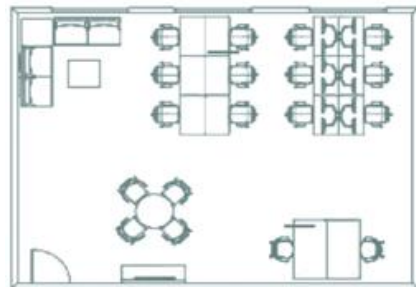
Executive Office for four



Executive Office for one



Spacious Office for one



Combination Office for fourteen

Create a room to satisfy all the demands on your workplace
Tailor space to your specific needs with a meeting area, soft seating
and a variety of storage options



Custom designs



High quality furniture



Cost effective solutions



Multiple accessories to choose from



Options for collaboration and focus spaces



Choices for alternative postures



Options for additional functional rooms



A range of storage options