

EDC Website – Town of Wilton



- 40 Things We Love About Wilton
- Dave Brubeck Collection at the Wilton Library
- Guide to Opening or Expanding a Business in Wilton CT
- Plan of Conservation and Development Executive Summary
- Properties for Lease or Sale
- Town Profile 2023
- Watch Why Residents Chose Wilton
- Watch Why Wilton Works for Business
- WestCOG Multi-Town GIS Mapping & Data
- Wilton GIS (Geographic Information Services) Mapping
- Zoning Map
- Zoning Regulations

Home » [Government](#)



Economic Development

If you are considering Wilton for your business, we are here to assist.

To help you get started, we've prepared a [Guide to Opening or Expanding a Business in Wilton](#).

More helpful information, including key data, available properties and how Wilton is working for other businesses, is available on the links on the left (below if mobile).

Wilton's Economic Development Commission (EDC), a team of resident volunteers who serve as business ambassadors, can provide insights and a sincere welcome to Wilton and the business community.

Board member information (seats, terms, etc) is available [here](#). To contact a Board member, click on a name below.

Commission Members

Name	Title
Joe Favarolo	Chair
Peter Squitieri	Vice Chair
Martin Avallone	Member
John DiCenzo	Member
Prasad Iyer	Member
Donna Peterson	Member
Alison Smith	Member

Community News

[Clarification on Yesterday's Notice Regarding the January 9th Town Vote](#)

[Party Change Notice](#)

[Holiday Greetings 2023](#)

[Legal Notice of Special Town Meeting](#)

[Latest Update from Eversource](#)

[View all](#)

Economic Development Calendar

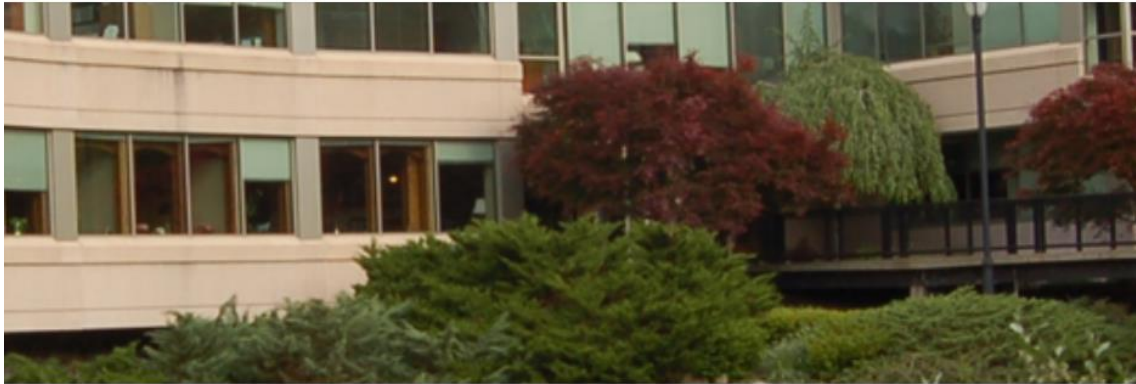
January						
S	M	T	W	T	F	S
	1	2	3	4	5	6
7	8	9	10	11	12	13
14	15	16	17	18	19	20
21	22	23	24	25	26	27
28	29	30	31			

[All upcoming events](#)

Agendas

[Economic Development](#)

EDC Website (WiltonEDC.org)



Wilton Town Hall
238 Danbury Road
Wilton, CT 06897
edc@wiltonct.org

Resources

Additional Information

- STATE OF CT - CORONAVIRUS
- BUSINESS RESOURCES
- ADVANCE CT CORONAVIRUS RESPONSE
- U.S. SMALL BUSINESS ADMINISTRATION (SBA) ASSISTANCE
- CT DEPARTMENT OF LABOR (DOL) UNEMPLOYMENT ASSISTANCE
- CT DEPARTMENT OF REVENUE SERVICES (DRS) FILING EXTENSIONS
- 2019 PLAN OF CONSERVATION AND DEVELOPMENT EXECUTIVE SUMMARY
- 2016 ANALYTICAL SURVEY 10/20/16 PUBLIC FORUM PRESENTATION
- TOWN OF WILTON WEB SITE
- 2014 STRATEGIC RECOMMENDATIONS
- WEDC PARTNERSHIPS

WiltonEDC News:

5 Big Ways Schools are Finally Making Working Parents' Lives Easier
September 17, 2019 - 9:40 am

Working moms love schools who understand their struggles...[read more](#)

It's Working in Wilton | ASML, Tauck, Dorel Sports and other businesses think "It's Working in Wilton." Wilton has had a long history of finding a balance between being a vibrant business location and an idyllic residential community. [MORE...](#)

Location, Location | Wilton is centrally located in the heart of Fairfield County, and 55 miles from New York City with easy access to Metro North trains and multiple area airports. [MORE...](#)



Community Profile

Wilton By the Numbers:

- Population: 18,043
- Land Area: 27 sq. mi / 70 sq. km
- Businesses in Wilton: +970
- Employed in Wilton: 12,500
- Estimated Annual Income: \$2 billion

[MORE](#)



Upcoming Events: