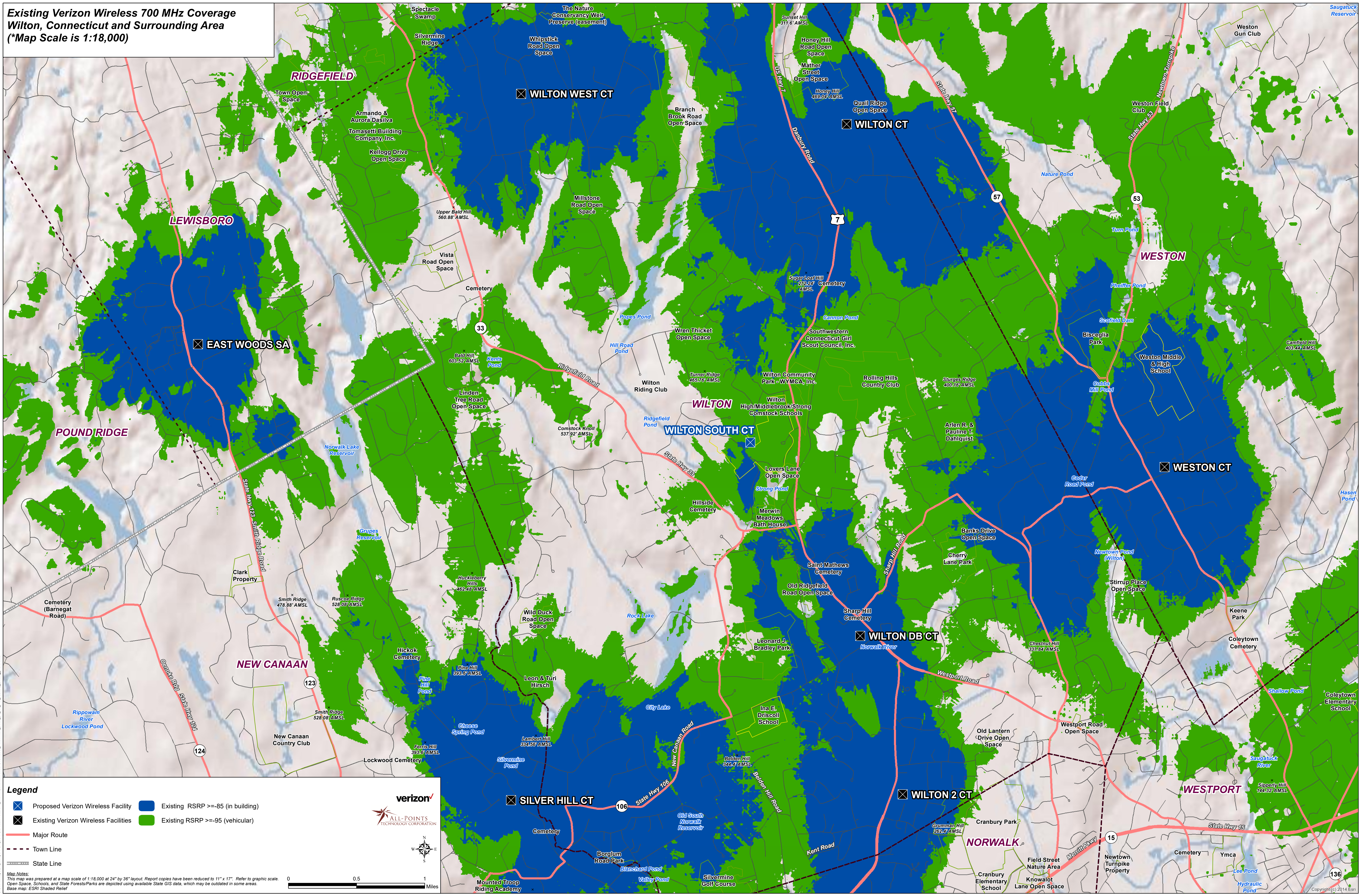


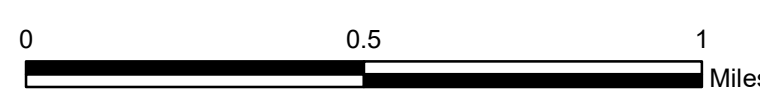
**Existing Verizon Wireless 700 MHz Coverage
Wilton, Connecticut and Surrounding Area
(*Map Scale is 1:18,000)**



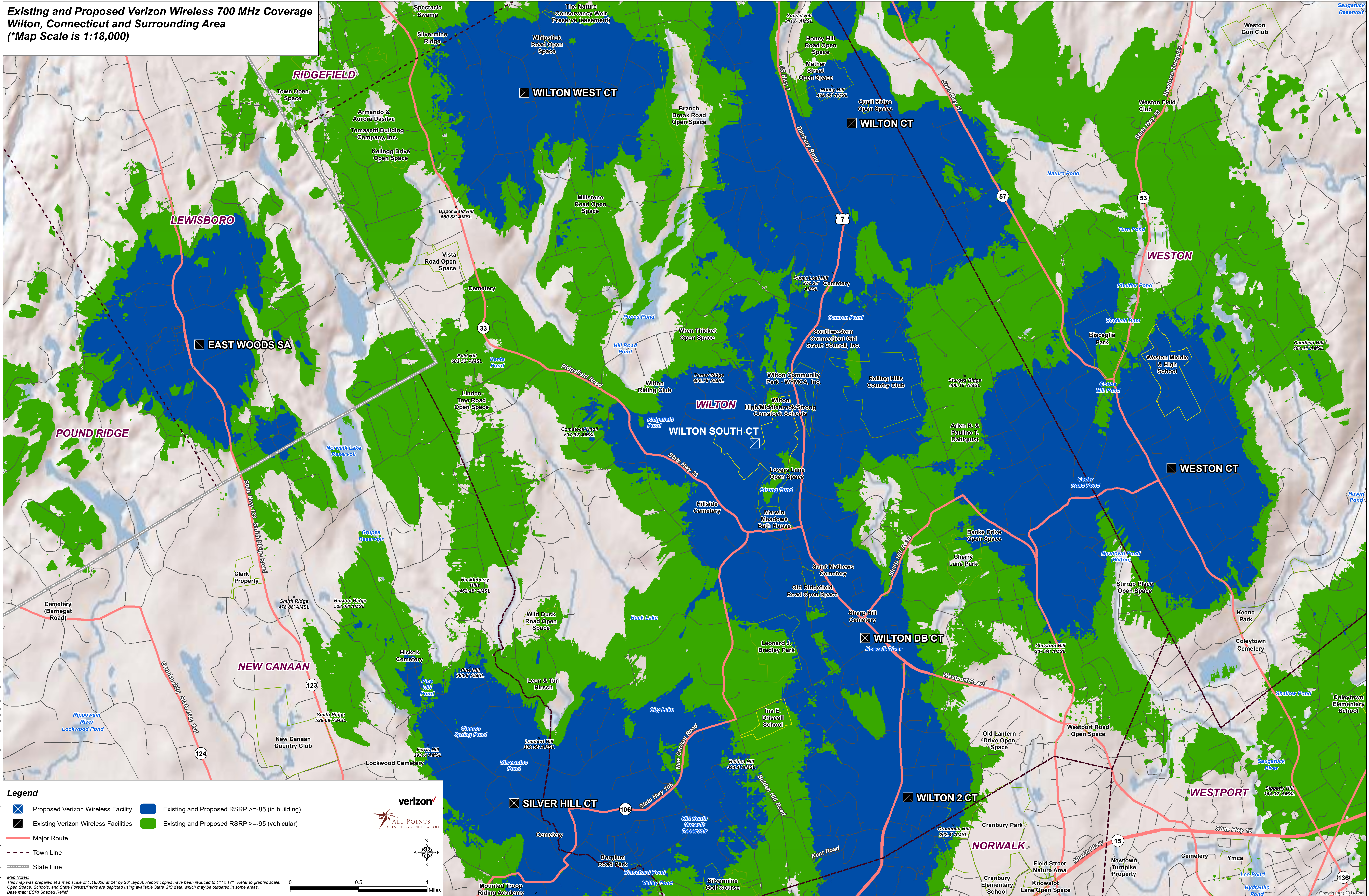
Legend

- ✕ Proposed Verizon Wireless Facility
- ✕ Existing Verizon Wireless Facilities
- Existing RSRP >= -85 (in building)
- Existing RSRP >= -95 (vehicular)
- Major Route
- - - Town Line
- = = = State Line

Map Notes:
This map was prepared at a map scale of 1:18,000 at 24" by 36" layout. Report copies have been reduced to 11" x 17". Refer to graphic scale. Open Space, Schools, and State Forests/Parks are depicted using available State GIS data, which may be outdated in some areas. Base map: ESRI Shaded Relief



**Existing and Proposed Verizon Wireless 700 MHz Coverage
Wilton, Connecticut and Surrounding Area
(*Map Scale is 1:18,000)**



Legend

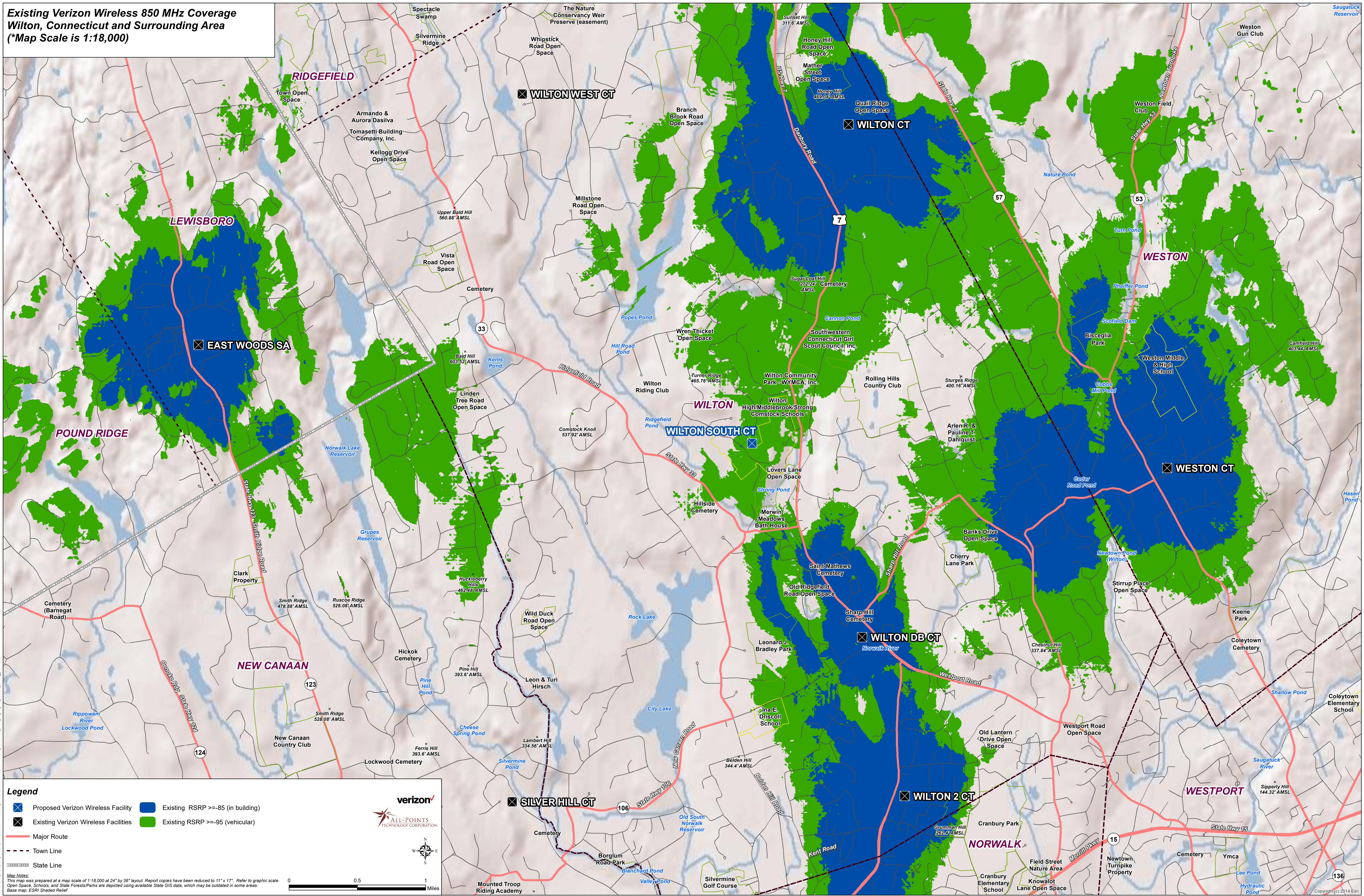
- ✕ Proposed Verizon Wireless Facility
- ✕ Existing Verizon Wireless Facilities
- Existing and Proposed RSRP >= -85 (in building)
- Existing and Proposed RSRP >= -95 (vehicular)
- Major Route
- - - Town Line
- = = = State Line

Map Notes:
This map was prepared at a map scale of 1:18,000 at 24" by 36" layout. Report copies have been reduced to 11" x 17". Refer to graphic scale. Open Space, Schools, and State Forests/Parks are depicted using available State GIS data, which may be outdated in some areas. Base map: ESRI Shaded Relief

Scale: 0 0.5 1 Miles

Verizon
ALL-POINTS
TECHNOLOGY CORPORATION

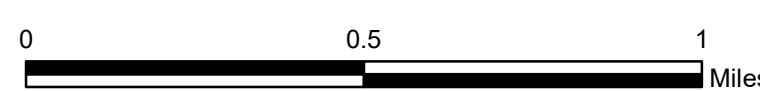
**Existing Verizon Wireless 850 MHz Coverage
Wilton, Connecticut and Surrounding Area
(*Map Scale is 1:18,000)**



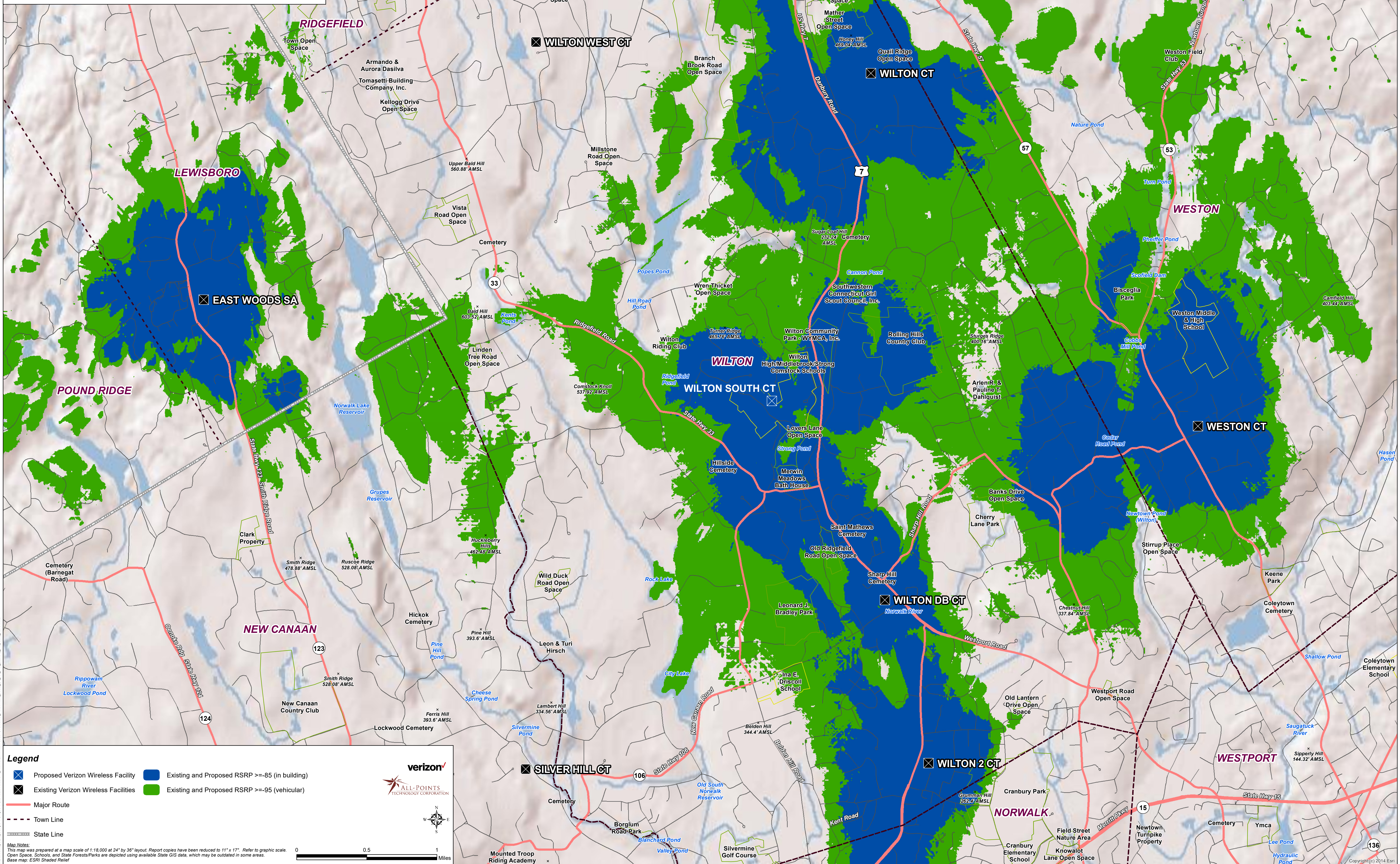
Legend

- X Proposed Verizon Wireless Facility
- Existing RSRP >= -85 (in building)
- Existing RSRP >= -95 (vehicular)
- X Existing Verizon Wireless Facilities
- Major Route
- - - Town Line
- State Line

Map Notes:
This map was prepared at a map scale of 1:18,000 at 24" by 36" layout. Report copies have been reduced to 11" x 17". Refer to graphic scale. Open Space, Schools, and State Forests/Parks are depicted using available State GIS data, which may be outdated in some areas. Base map: ESRI Shaded Relief



**Existing and Proposed Verizon Wireless 850 MHz Coverage
Wilton, Connecticut and Surrounding Area
(*Map Scale is 1:18,000)**



Legend

- Proposed Verizon Wireless Facility
- Existing and Proposed RSRP >= -85 (in building)
- Existing Verizon Wireless Facilities
- Existing and Proposed RSRP >= -95 (vehicular)
- Major Route
- Town Line
- State Line

Map Notes:
This map was prepared at a map scale of 1:18,000 at 24" by 36" layout. Report copies have been reduced to 11" x 17". Refer to graphic scale. Open Space, Schools, and State Forests/Parks are depicted using available State GIS data, which may be outdated in some areas. Base map: ESRI Shaded Relief

Scale: 0 0.5 1 Miles

