

WILTON POLICE STATION

BOARD OF SELECTMEN

TOWN OF WILTON, CONNECTICUT



OCTOBER 2021

Tecton
ARCHITECTS

A COLLABORATIVE TEAM



JEFF MCELRAVY

AIA

Principal in Charge
Director of Public Safety
Tecton Architects

IACP Member

CPCA Associate Member

MCOPA Associate Member



REBECCA HOPKINS

AIA, NCARB, EDAC

Project Manager
Tecton Architects

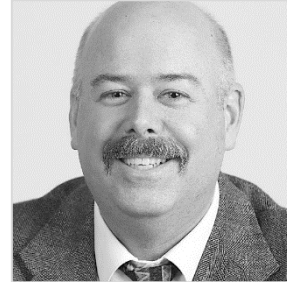
IACP Member



JOHN VITTI

RA, LEED AP

Project Architect
Tecton Architects



DENNIS BROWN

Production Leader
Tecton Architects



RENEE PARRY

Support Staff
Tecton Architects

CONSULTANTS

CONSULTING ENGINEERING SERVICES (CES)

MEP Engineering, Fire
Protection, IT

FUSS & O'NEILL

Civil Engineering,
Landscape Architecture

PES STRUCTURAL ENGINEERS

Structural Engineering

CONSTRUCTION COST SOLUTIONS

Cost Estimating

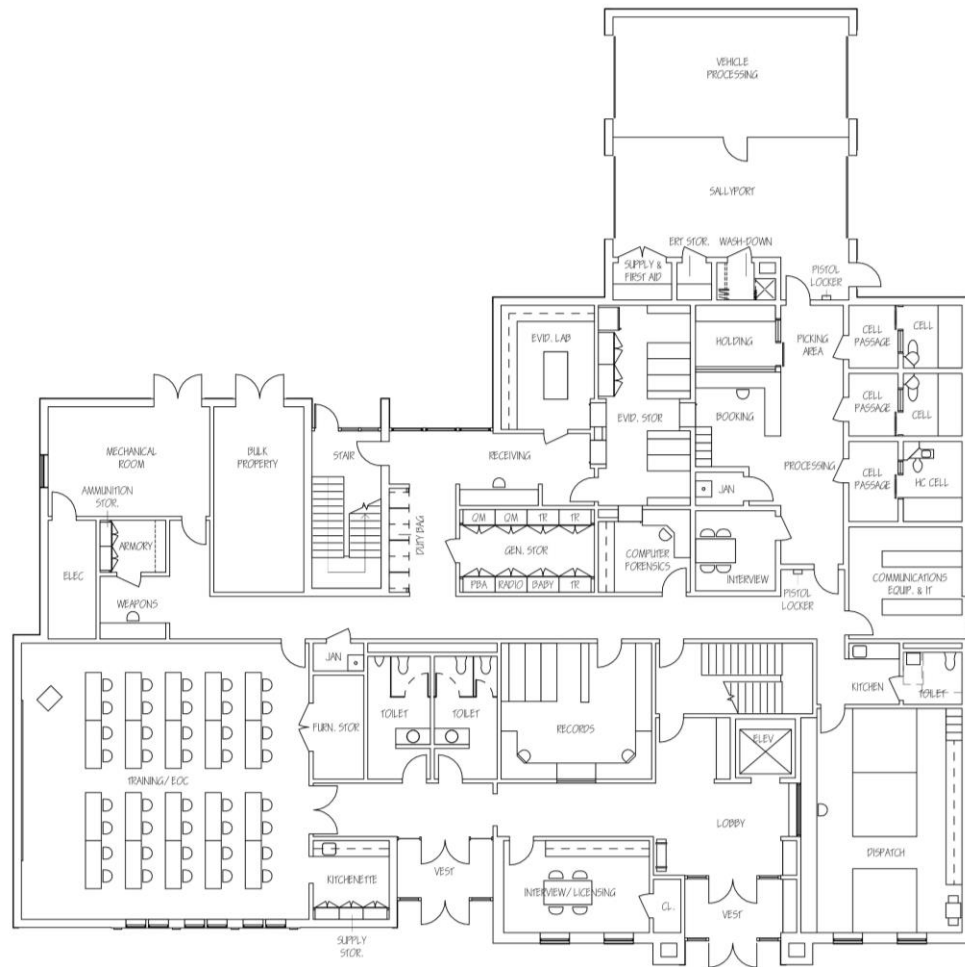
NEW CONSTRUCTION

CONCEPTUAL DESIGN

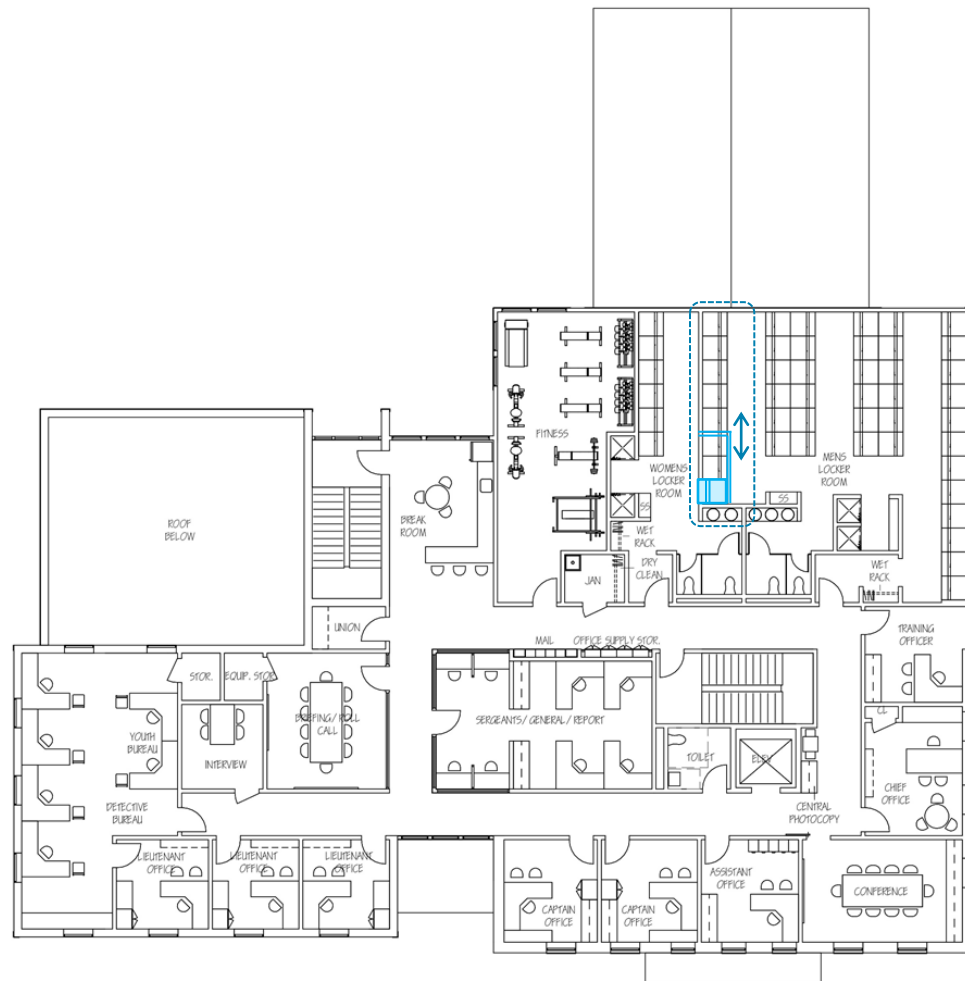
DANBURY RD (RT. 7)



SITE PLAN



MAIN FLOOR PLAN



UPPER FLOOR PLAN



WEST ELEVATION (VIEW FACING TOWN HALL)



SOUTH ELEVATION (VIEW FACING FIRE AND DPW)

.....

CONCEPTUAL ELEVATIONS



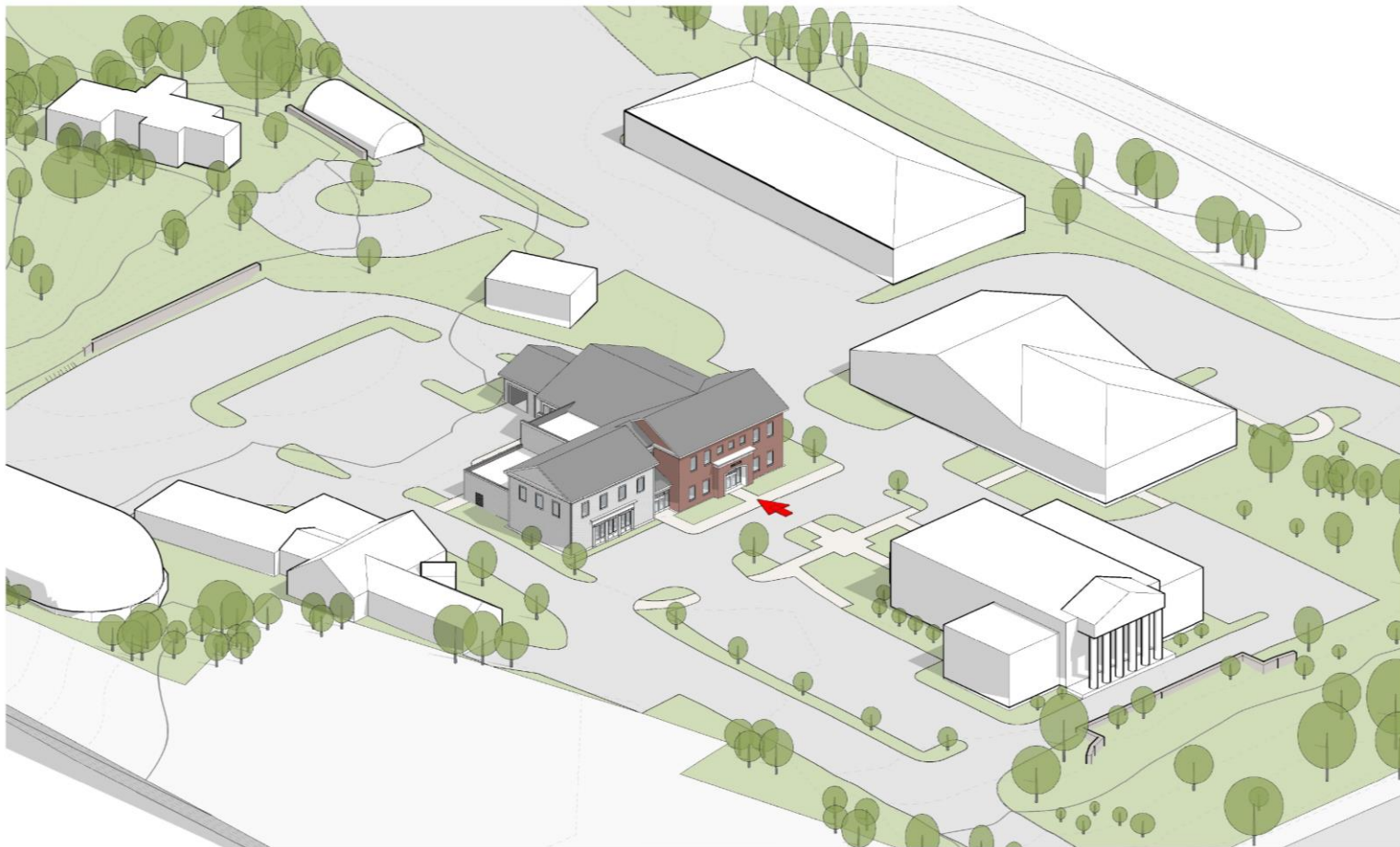
EAST ELEVATION (VIEW FACING THE REAR OF THE SITE)



NORTH ELEVATION (VIEW FACING ANNEX)

.....

CONCEPTUAL ELEVATIONS



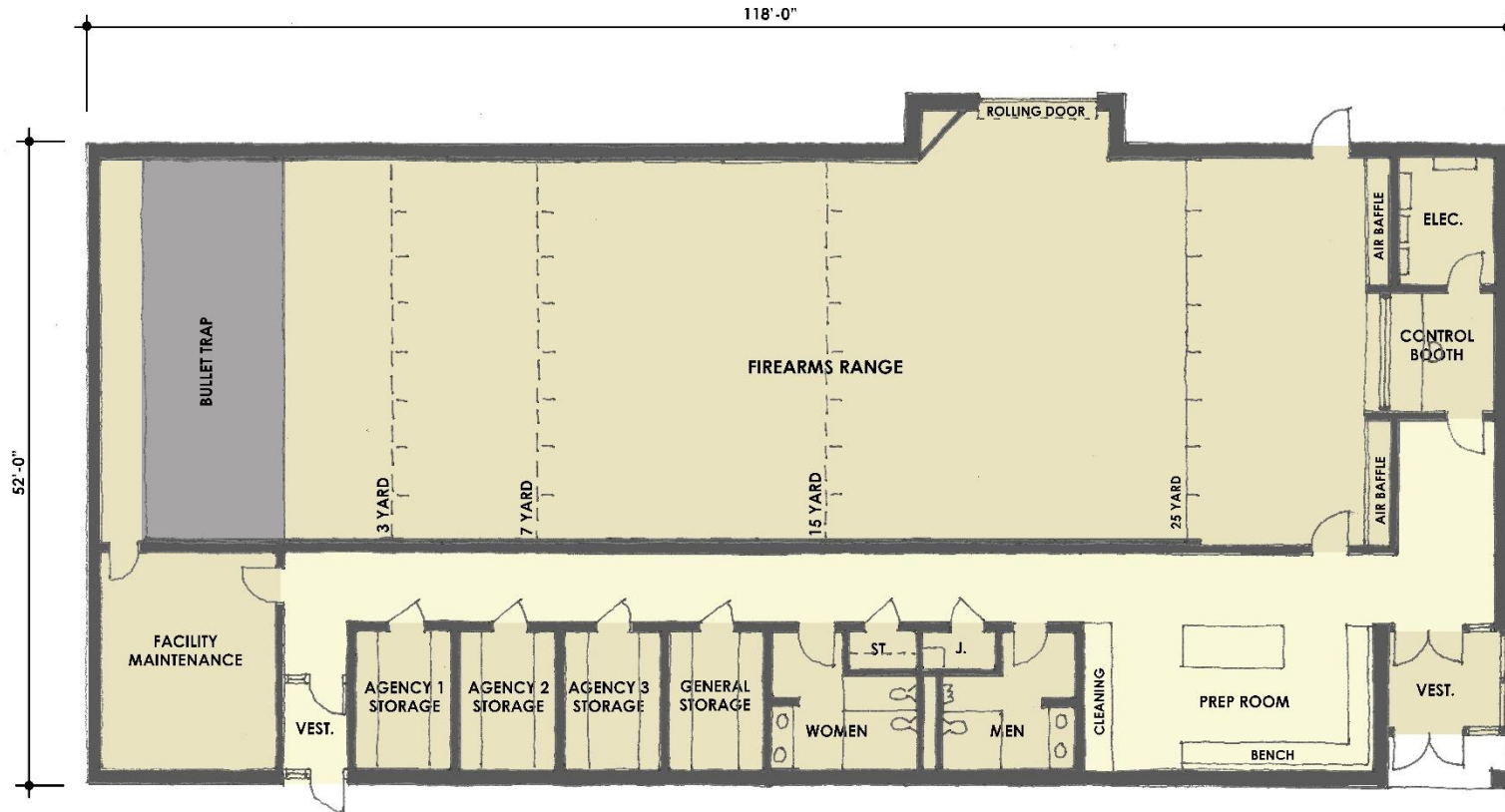
PERSPECTIVE OF MUNICIPAL CAMPUS



PERSPECTIVE OF POLICE STATION

FIREARMS TRAINING FACILITY

CONCEPTUAL DESIGN

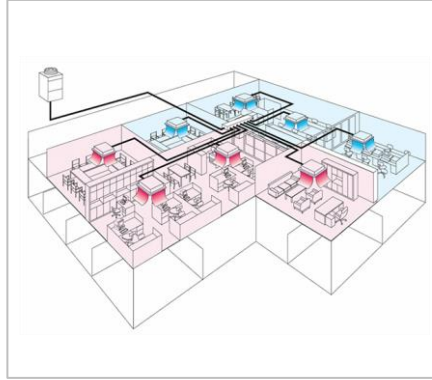


FIREARMS TRAINING FACILITY FLOOR PLAN

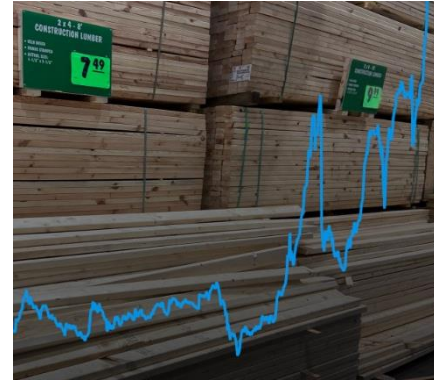
SUPPLY CHAIN INTERRUPTIONS



ADAPTIVE DESIGN RESPONSES



ESCALATION OF MATERIAL COSTS



LIMITATIONS ON LABOR FORCE



.....
COVID IMPACT ON MARKET CONDITIONS