

STREETSCAN

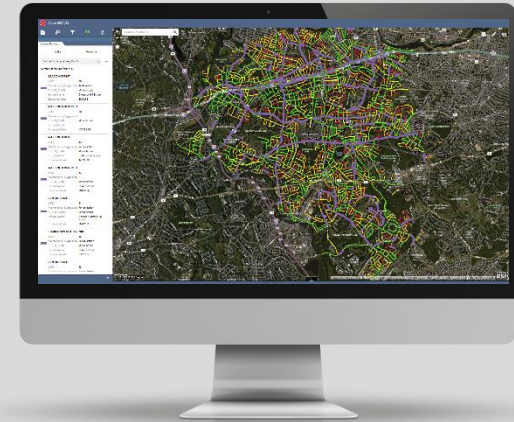
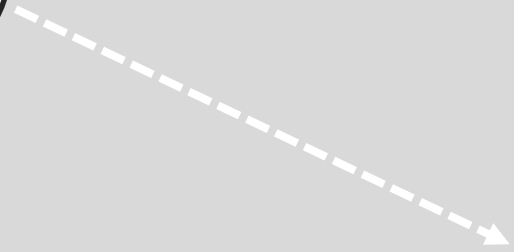


August 2019

Agenda

- StreetScan Solution in Wilton
- Roads Condition Statistics
- Roads Management Plan/Projections
- Streetlogix Portal Demonstration

Questions at anytime!



Computer Vision



Machine Learning

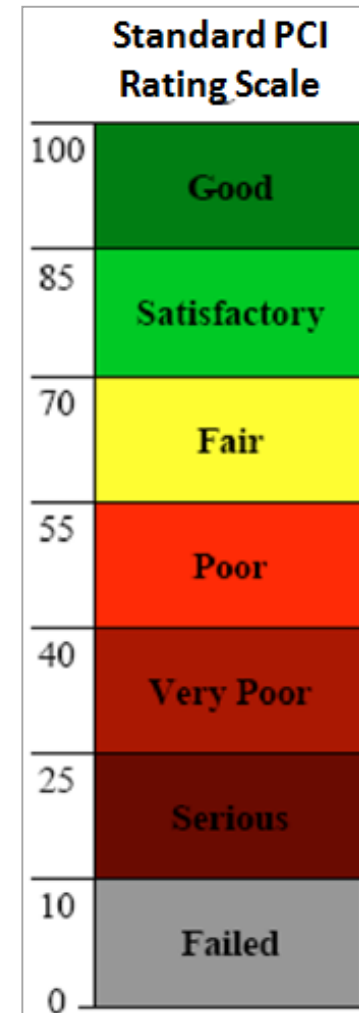
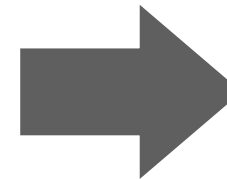
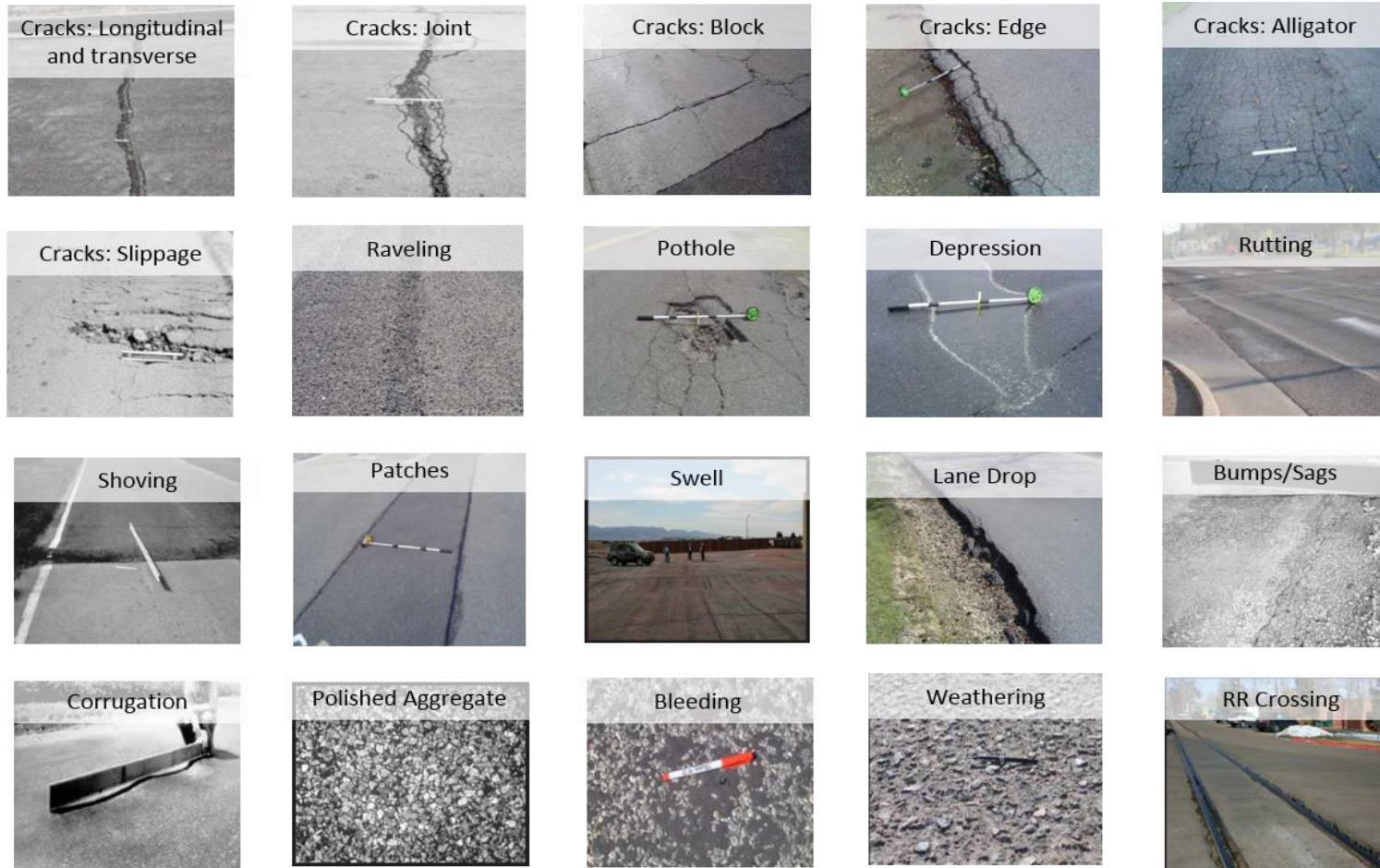


Data Science



Sensing Expertise

ASTM Standard Road Distresses





Sample excellent road – (86-100)
(Dark Green)



Sample good road – (71-85)
(Light Green)



Sample fair road – (56-70)
(Yellow)



Sample poor road – (41-55)
(Orange)



Sample very poor road – (26-40)
(Red)

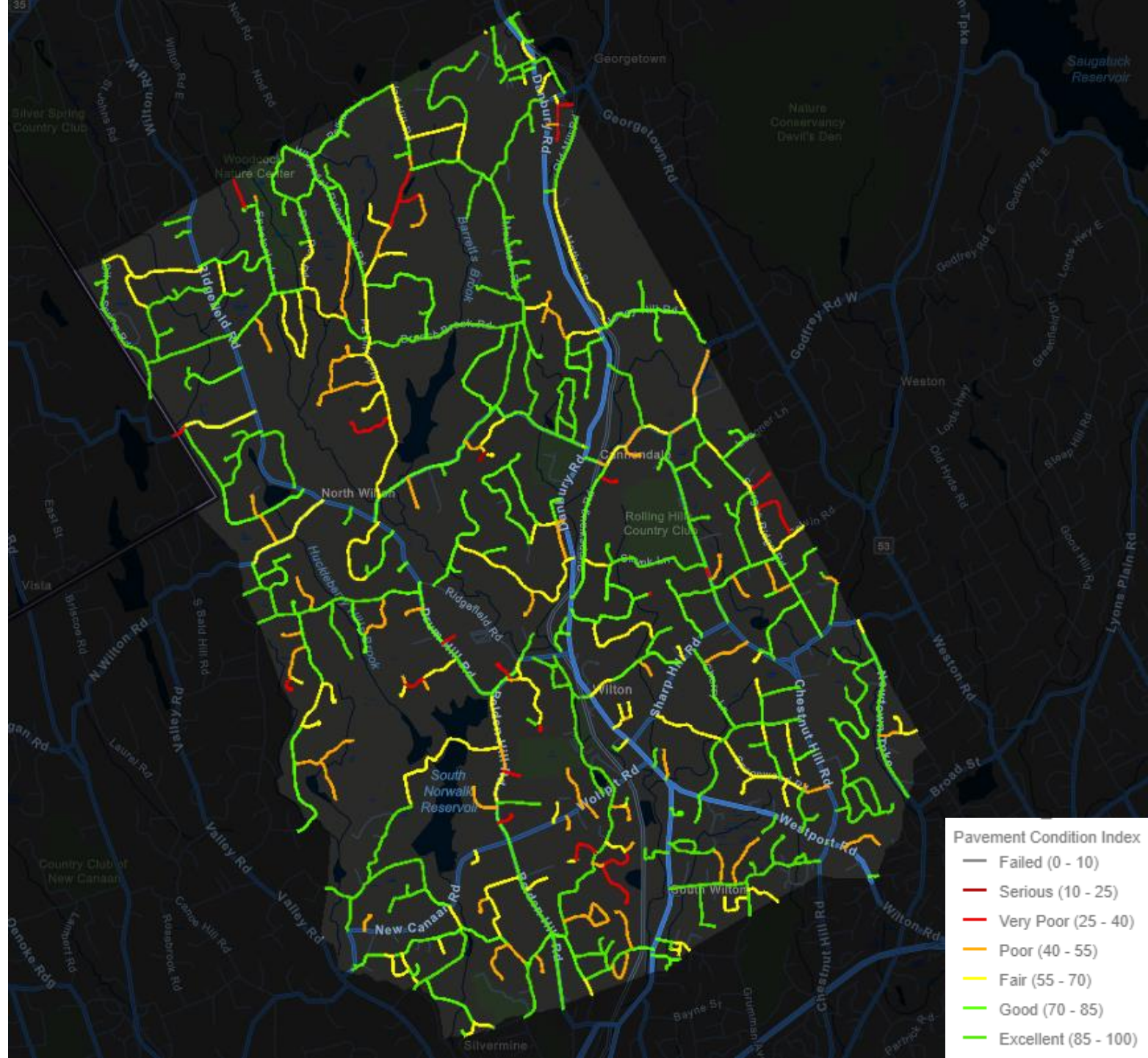


Sample serious/failed road – (0-25)
(Dark Red & Gray)

Pavement Condition Statistics

Pavement Condition Index (PCI)

As of June 1, 2019

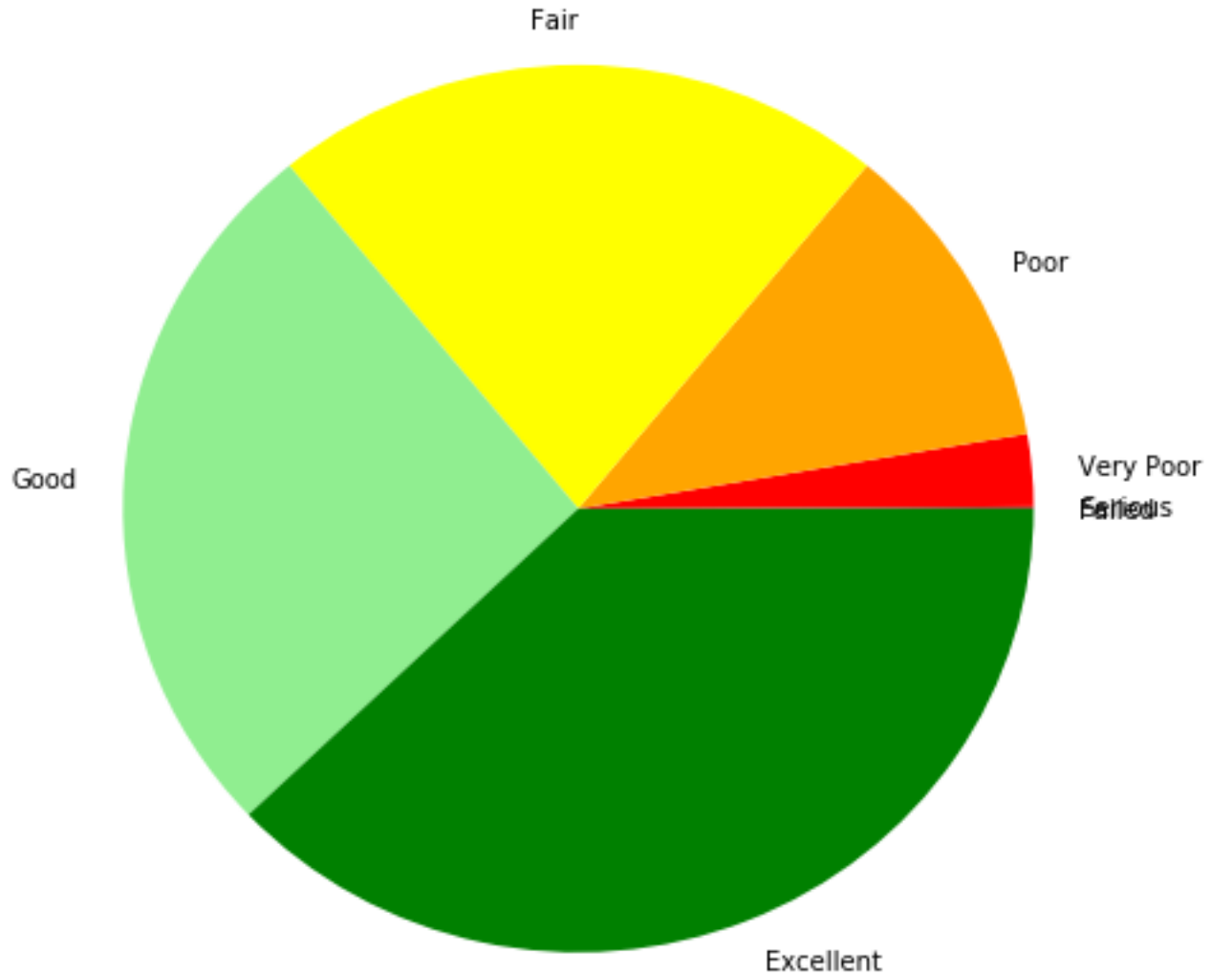


Roads Condition Statistics

As of June 1, 2019

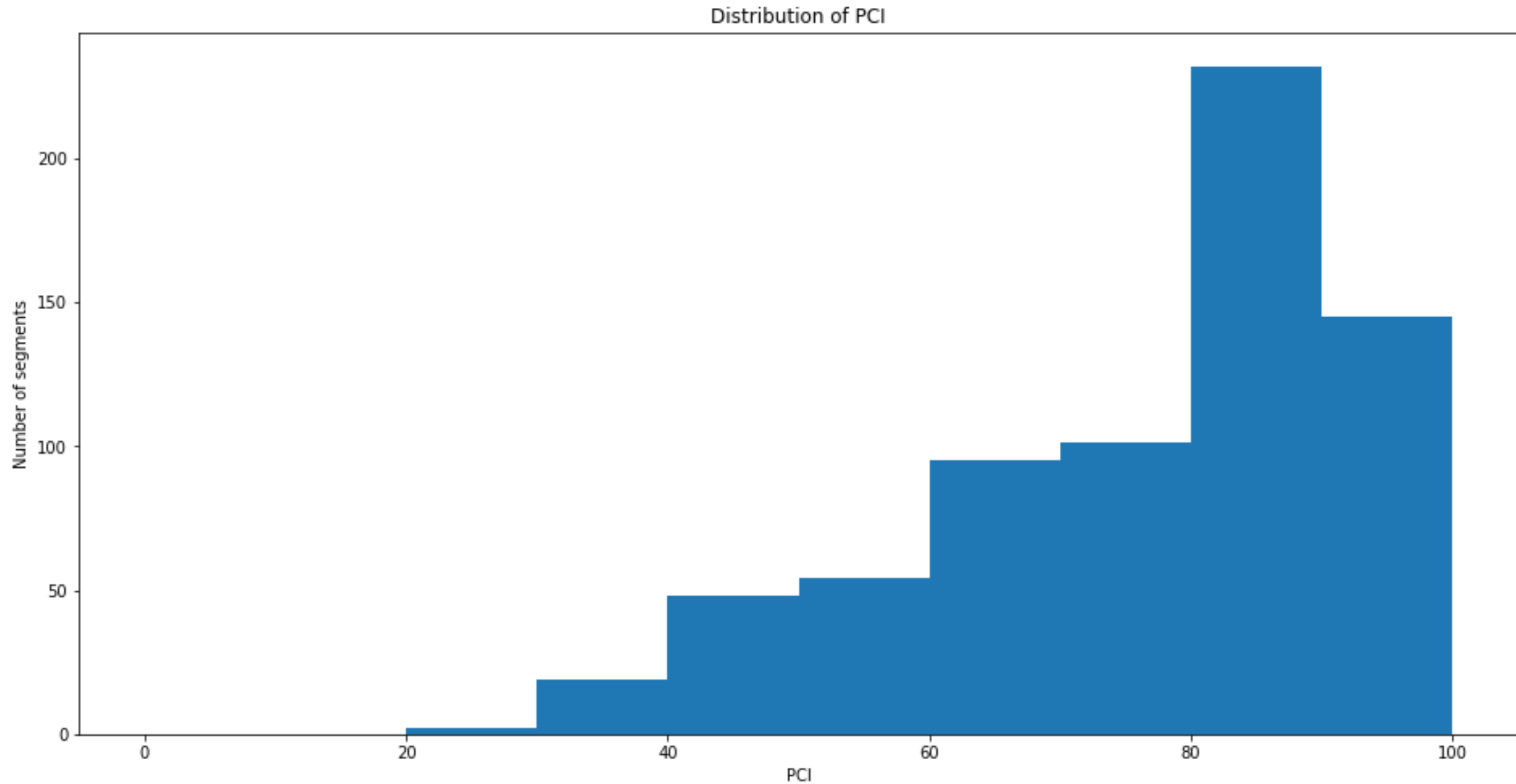
PCI Distribution by category

Average Condition	77.0
% below Critical Condition (55)	14.1%
% above Critical Condition (55)	85.9%



Distribution of Pavement Condition Index

As of June 1, 2019



Breakdown by Miles and Number of Segments

As of June 1, 2019

PCI Range	0 – 10 (Gray)	11 – 25 (Dark Red)	26 – 40 (Red)	41 – 55 (Orange)	56 – 70 (Yellow)	71 – 85 (Green)	86 – 100 (Dark Green)	TOTAL
Centerline Miles	0	0.1	3.4	14.8	28.5	34.1	49.4	130.3
Segments	0	1	20	70	127	185	293	696
Percentage	0%	0.1%	2.6%	11.4%	21.9%	26.2%	37.9%	100%

Roads completed after June 1, 2019:

1.64 miles

2.51 miles

0.95 miles

Summary of Findings

As of June 1, 2019

- Average PCI for City-owned road is **77.0**
- The estimated maintenance backlog is **\$13,433,112**. This value represents the cost to repair the entire road network at once to an average PCI of 85.

Cost Estimates Used

- Preventive (Crack Seal): \$1/SY
- Rehabilitation (Mill & 2" Overlay): \$20/SY
- Reclamation (Full-Depth w/ 4" Overlay): \$40/SY

Pavement Maintenance and Repair

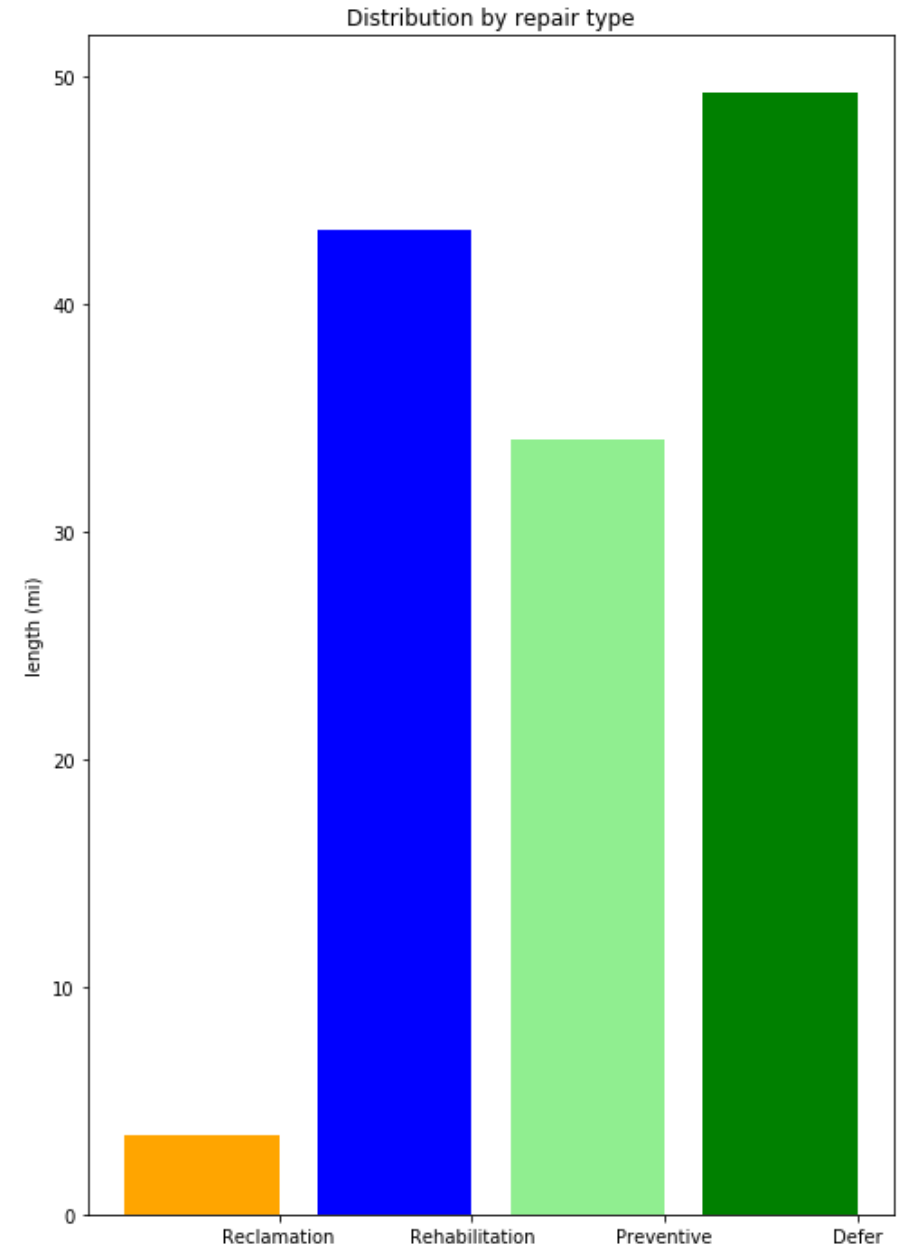


Pavement Maintenance

- Defer Maintenance
- Routine Maintenance
- Preventive Maintenance
- Rehabilitation
- Reclamation

Maintenance and Repair Statistics

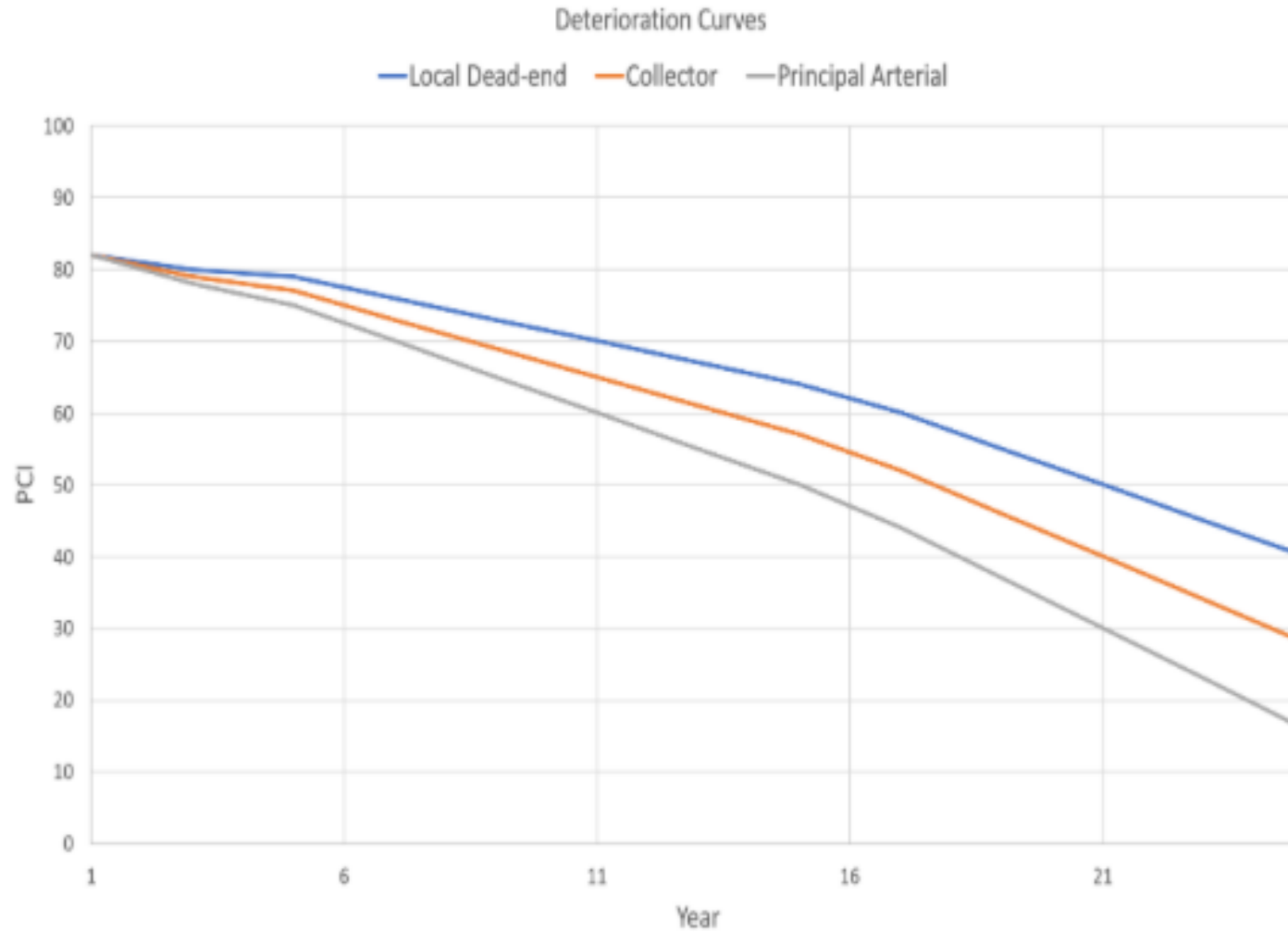
PCI Range	Category	Description	Examples
< 40	Reconstruction	Significant structural damage	Reclamation, Major Mill and Overlay > 4"
40 – 70	Rehabilitation	Resurfacing required to mitigate the effects of rutting, cracking and other distresses	Hot-mix overlay, Mill & Overlay, Hot-in-place Recycling
70 – 85	Preventive Repair	Minor distresses in early stages of pavements' life-cycle	Crack Seal, Microsurfacing, Chip Seal
> 85	Defer Maintenance	Pavement in a great condition	NA



Prioritization Factors

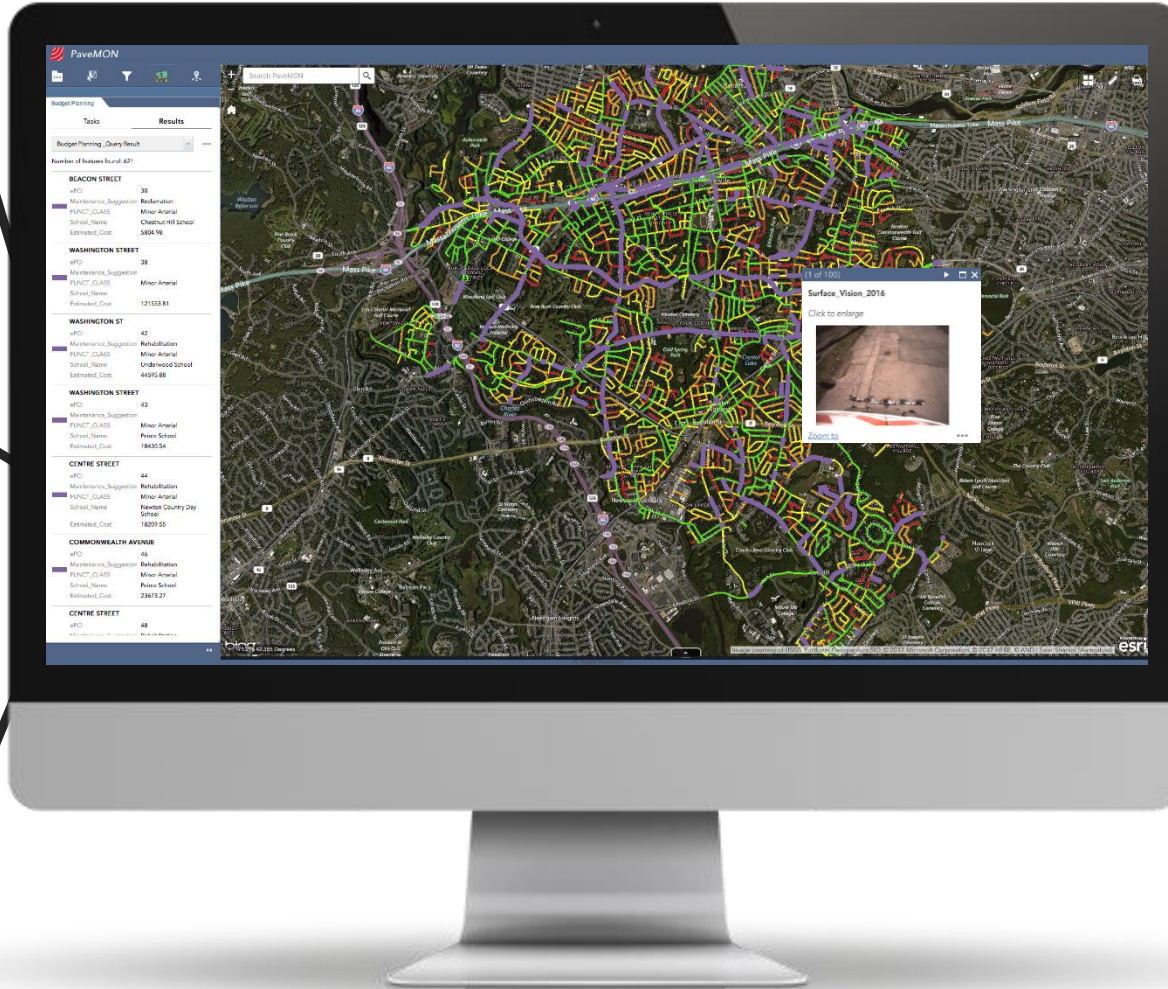
- Functional Class
- Condition
 - PCI
- Benefit (condition change, life extension) to Cost (repair Cost) Ratio
- Available Budget

Deterioration Models





streetlogix



WEB-BASED APP



ADVANCED ANALYTICS



UNLIMITED USERS



USER FRIENDLY DASHBOARD



CLOUD HOSTED DATA



ESRI BASED





Get In Touch



info@streetscan.com



617-399-8236