

# 15 OLD DANBURY RD

---

**BEINFELD ARCHITECTURE**

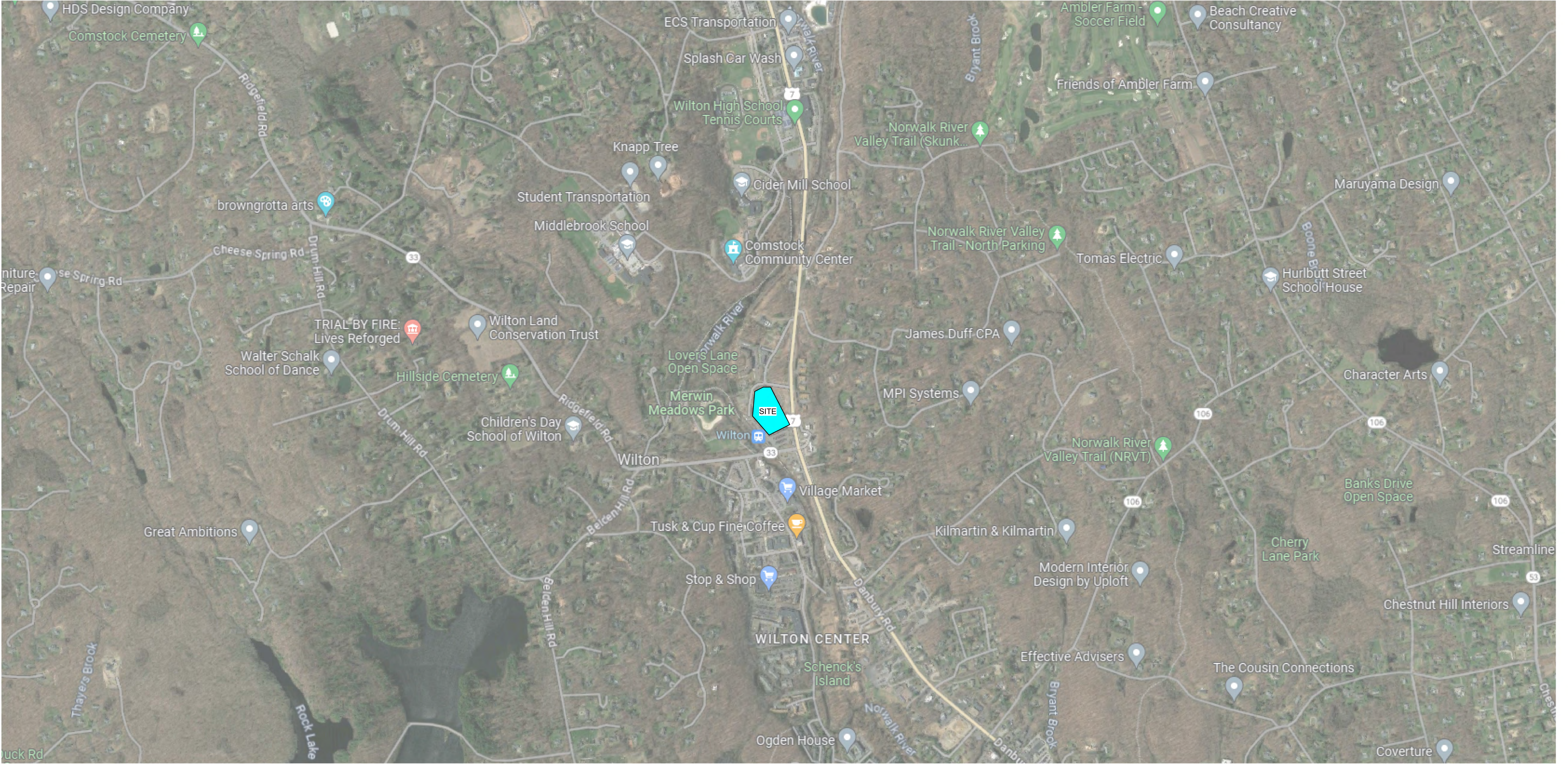
04/19/24

| PARKING ANALYSIS                                  |       |
|---|-------|
| PARKING SCHEDULE                                  |       |
| STALL TYPE  | COUNT |
| <b>GARAGE</b>                                     |       |
| Parking Space ADA: 8' x 18' (8' Aisle) CT ADA Van | 1     |
| Parking Space ADA: 8-6' x 18' (5' Aisle) CT ADA   | 3     |
| Parking Space: 9' x 18' - 90 deg                  | 97    |
| <b>SURFACE</b>                                    |       |
| Parking Space ADA: 8' x 18' (8' Aisle) CT ADA Van | 1     |
| Parking Space ADA: 10' x 18' (5' Aisle) CT ADA    | 5     |
| Parking Space: 9' x 18' - 90 deg                  | 206   |
| TOTAL PARKING SPACES                              | 313   |

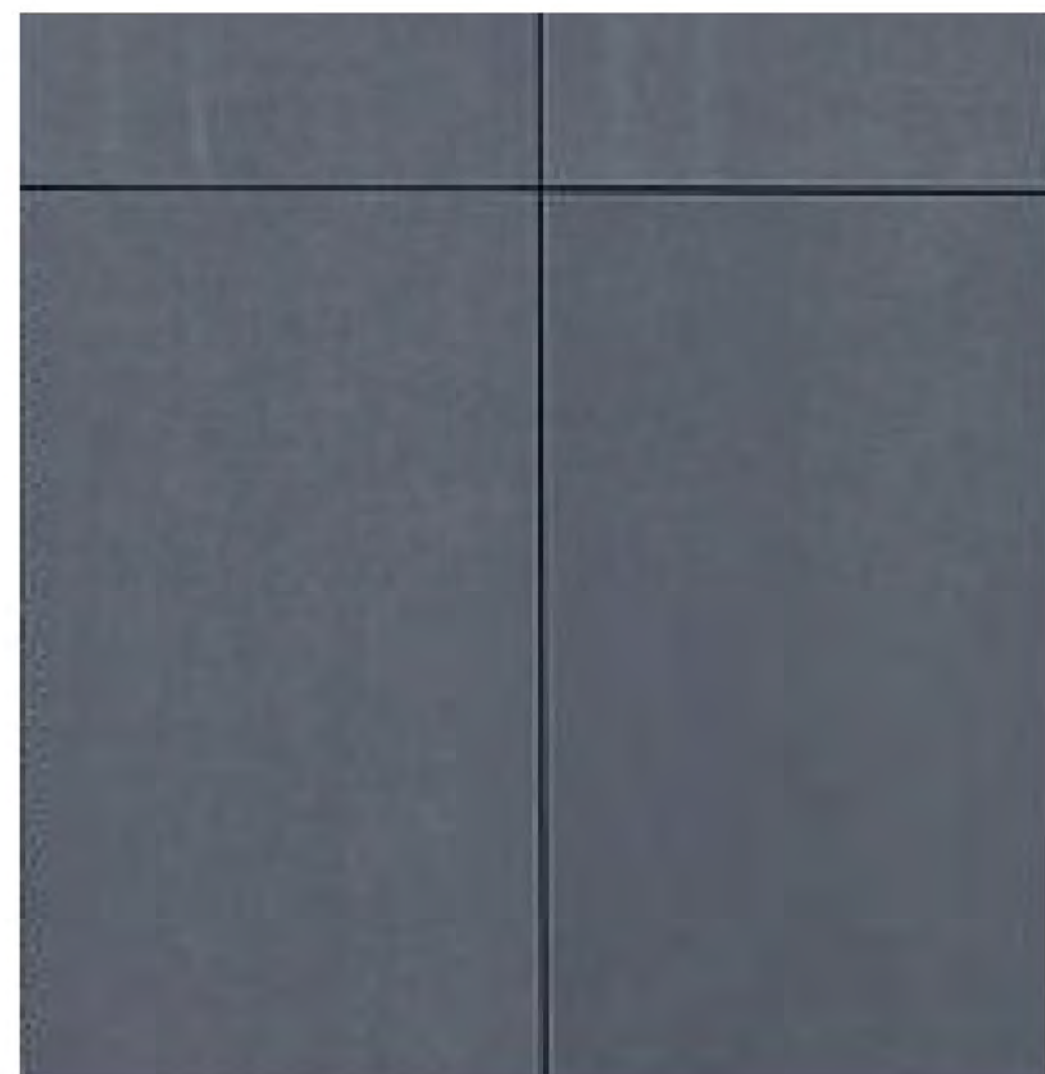
| BUILDING AREAS                   |                             |
|----------------------------------|-----------------------------|
| GSF - AREA SCHEDULE (BY PROGRAM) |                             |
| LEVEL                            | AREA                        |
| <b>AMENITY</b>                   |                             |
| Level 1 - A                      | 9,290 SF<br><b>9,290 SF</b> |
| <b>CIRCULATION</b>               |                             |
| Level 0                          | 560 SF                      |
| Level 1 - A                      | 4,670 SF                    |
| Level 2 - A                      | 4,670 SF                    |
| Level 3 - A                      | 4,670 SF                    |
| Level 4 - A                      | 4,670 SF                    |
| Level 5 - A                      | 4,670 SF                    |
| Level 6 - A                      | 1,340 SF                    |
|                                  | <b>25,250 SF</b>            |
| <b>MECHANICAL</b>                |                             |
| Level 1 - A                      | 2,555 SF                    |
| Level 2 - A                      | 1,765 SF                    |
| Level 3 - A                      | 1,765 SF                    |
| Level 4 - A                      | 1,765 SF                    |
| Level 5 - A                      | 1,635 SF                    |
| Level 6 - A                      | 135 SF                      |
|                                  | <b>9,615 SF</b>             |
| <b>RESIDENTIAL</b>               |                             |
| Level 1 - A                      | 28,190 SF                   |
| Level 2 - A                      | 45,620 SF                   |
| Level 3 - A                      | 45,620 SF                   |
| Level 4 - A                      | 46,245 SF                   |
| Level 5 - A                      | 39,720 SF                   |
| Level 6 - A                      | 8,490 SF                    |
|                                  | <b>213,890 SF</b>           |
|                                  | <b>258,045 SF</b>           |

| BUILDING AREAS                 |                         |
|--------------------------------|-------------------------|
| GSF - AREA SCHEDULE (BY FLOOR) |                         |
| PROGRAM                        | AREA                    |
| <b>Level 0</b>                 |                         |
| CIRCULATION                    | 560 SF<br><b>560 SF</b> |
| <b>Level 1 - A</b>             |                         |
| AMENITY                        | 9,290 SF                |
| CIRCULATION                    | 4,670 SF                |
| MECHANICAL                     | 2,555 SF                |
| RESIDENTIAL                    | 28,190 SF               |
|                                | <b>44,710 SF</b>        |
| <b>Level 2 - A</b>             |                         |
| CIRCULATION                    | 4,670 SF                |
| MECHANICAL                     | 1,765 SF                |
| RESIDENTIAL                    | 45,620 SF               |
|                                | <b>52,055 SF</b>        |
| <b>Level 3 - A</b>             |                         |
| CIRCULATION                    | 4,670 SF                |
| MECHANICAL                     | 1,765 SF                |
| RESIDENTIAL                    | 45,620 SF               |
|                                | <b>52,055 SF</b>        |
| <b>Level 4 - A</b>             |                         |
| CIRCULATION                    | 4,670 SF                |
| MECHANICAL                     | 1,765 SF                |
| RESIDENTIAL                    | 46,245 SF               |
|                                | <b>52,675 SF</b>        |
| <b>Level 5 - A</b>             |                         |
| CIRCULATION                    | 4,670 SF                |
| MECHANICAL                     | 1,635 SF                |
| RESIDENTIAL                    | 39,720 SF               |
|                                | <b>46,030 SF</b>        |
| <b>Level 6 - A</b>             |                         |
| CIRCULATION                    | 1,340 SF                |
| MECHANICAL                     | 135 SF                  |
| RESIDENTIAL                    | 8,490 SF                |
|                                | <b>9,965 SF</b>         |
|                                | <b>258,045 SF</b>       |

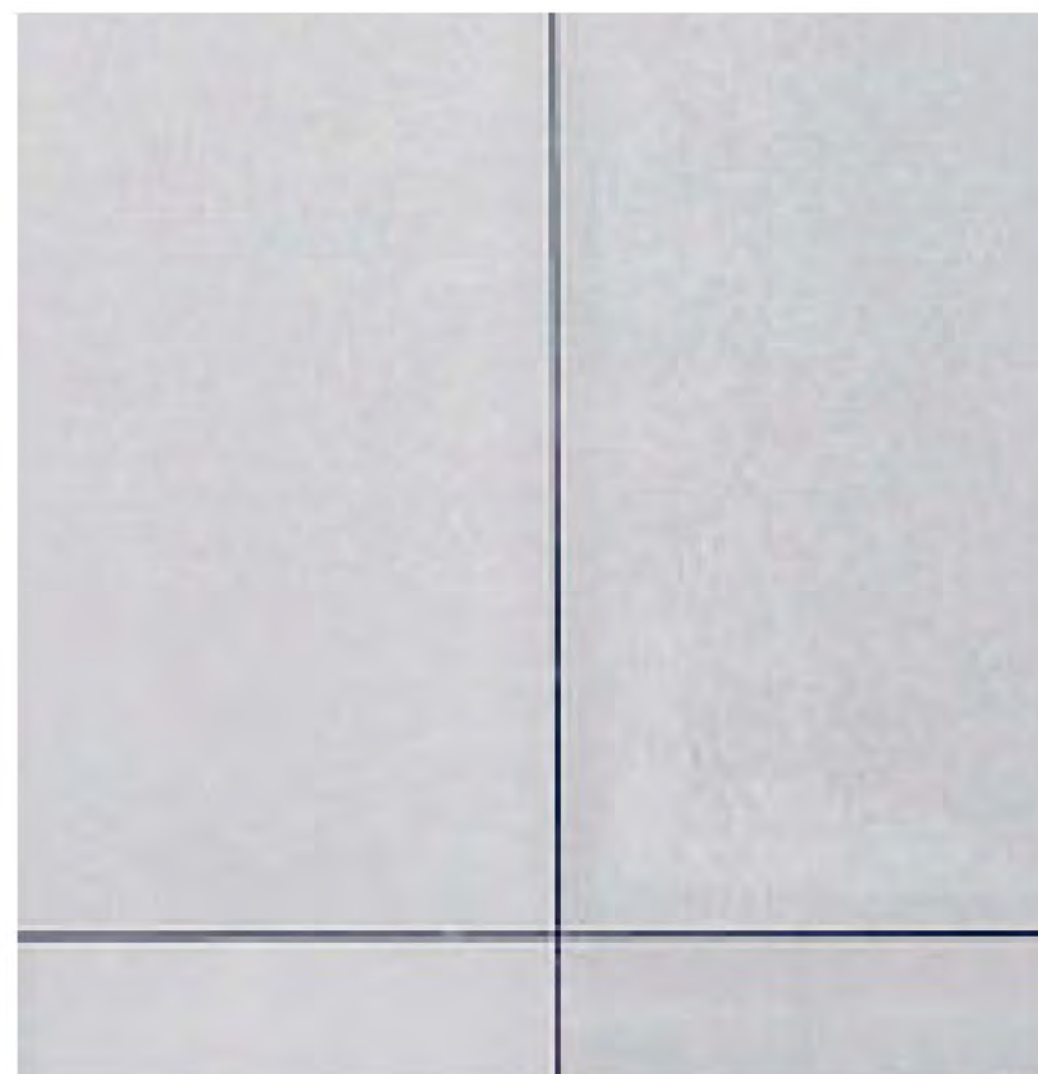
| UNIT SCHEDULES     |            |             |
|--------------------|------------|-------------|
| UNIT SCHEDULE      |            |             |
| UNIT TYPE          | COUNT      |             |
| <b>Level 1 - A</b> |            |             |
| 1 BR JR            | 3          |             |
| 1 BR               | 12         |             |
| 2 BR               | 11         |             |
| 3 BR               | 3          |             |
|                    | <b>29</b>  |             |
| <b>Level 2 - A</b> |            |             |
| 1 BR JR            | 3          |             |
| 1 BR               | 14         |             |
| 2 BR               | 21         |             |
| 3 BR               | 6          |             |
|                    | <b>44</b>  |             |
| <b>Level 3 - A</b> |            |             |
| 1 BR JR            | 3          |             |
| 1 BR               | 14         |             |
| 2 BR               | 20         |             |
| 3 BR               | 7          |             |
|                    | <b>44</b>  |             |
| <b>Level 4 - A</b> |            |             |
| 1 BR JR            | 3          |             |
| 1 BR               | 14         |             |
| 2 BR               | 20         |             |
| 3 BR               | 7          |             |
|                    | <b>44</b>  |             |
| <b>Level 5 - A</b> |            |             |
| 1 BR               | 15         |             |
| 2 BR               | 16         |             |
| 3 BR               | 8          |             |
|                    | <b>39</b>  |             |
| <b>Level 6 - A</b> |            |             |
| 1 BR               | 1          |             |
| 2 BR               | 5          |             |
| 3 BR               | 2          |             |
|                    | <b>8</b>   |             |
|                    | <b>208</b> |             |
|                    |            |             |
| UNIT MIX           |            |             |
| UNIT TYPE          | COUNT      | PERCENTAGE  |
| 1 BR JR            | 12         | 6%          |
| 1 BR               | 70         | 34%         |
| 2 BR               | 93         | 45%         |
| 3 BR               | 33         | 16%         |
|                    | <b>208</b> | <b>100%</b> |







1. Fiber Cement / Dark Grey



2. Fiber Cement / Light Grey



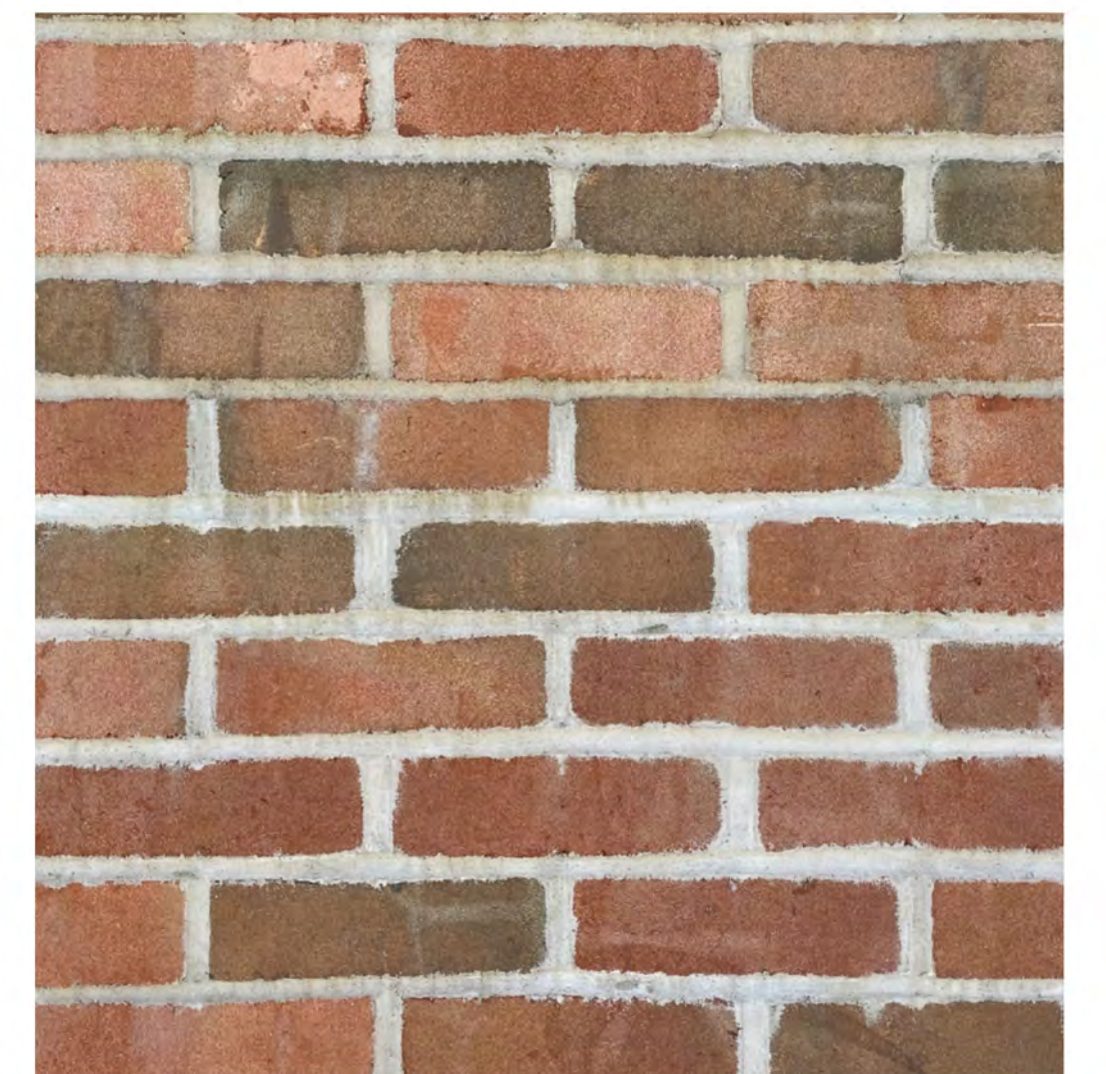
3. Divided Light Windows



4. Cable Rail



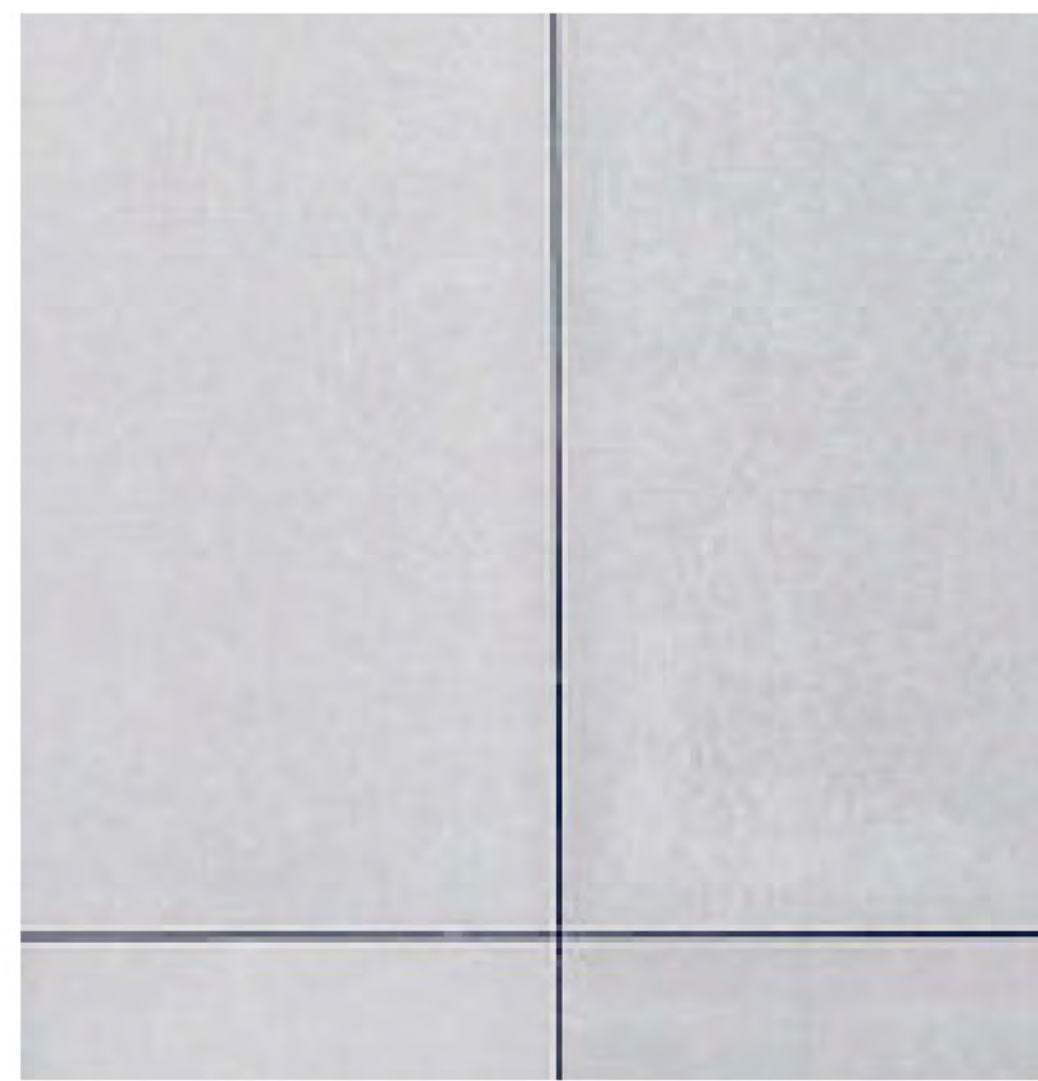
5. Grey Brick



6. Red Brick



1. Grey Brick



2. Fiber Cement / Light Grey



3. Fiber Cement / Dark Grey



4. Cable Rail



5. Steel Beams









