











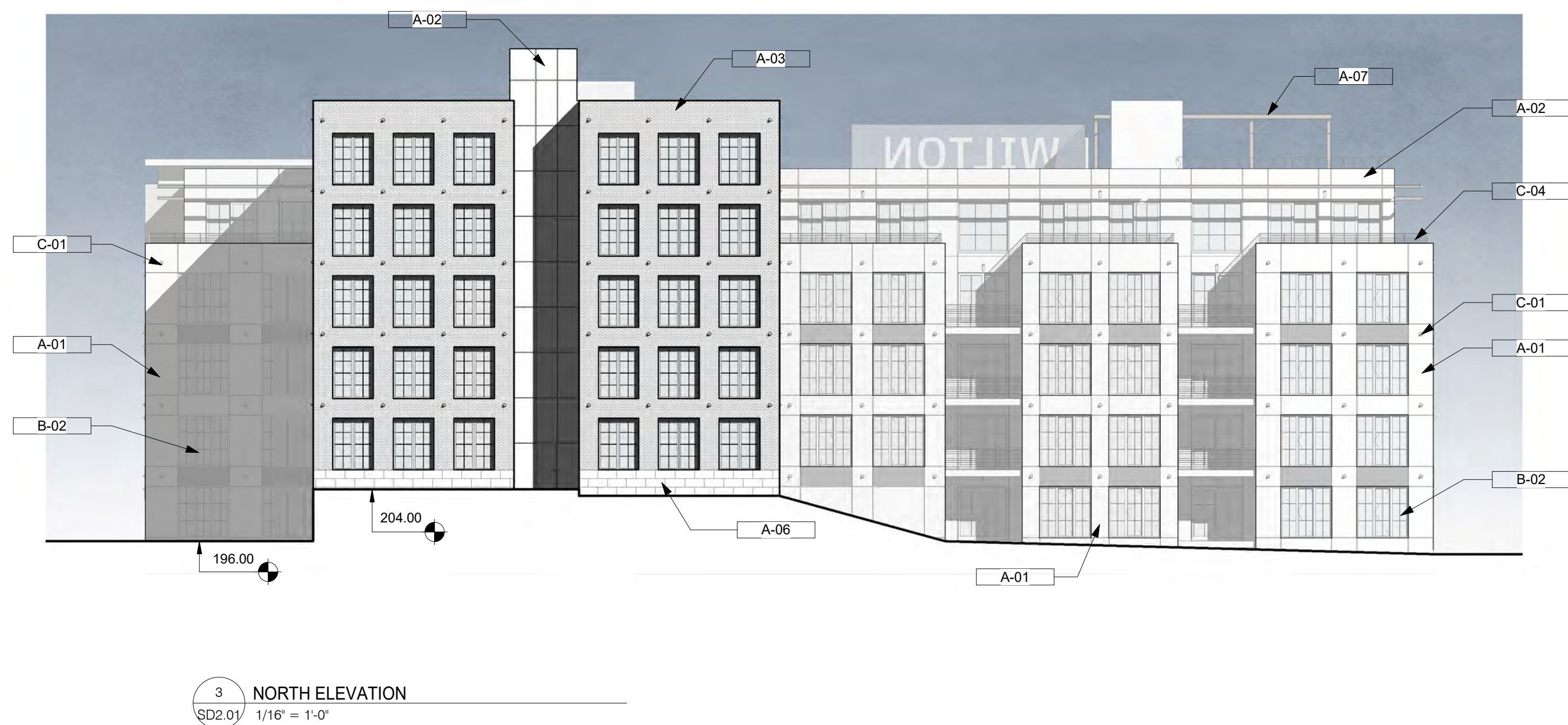
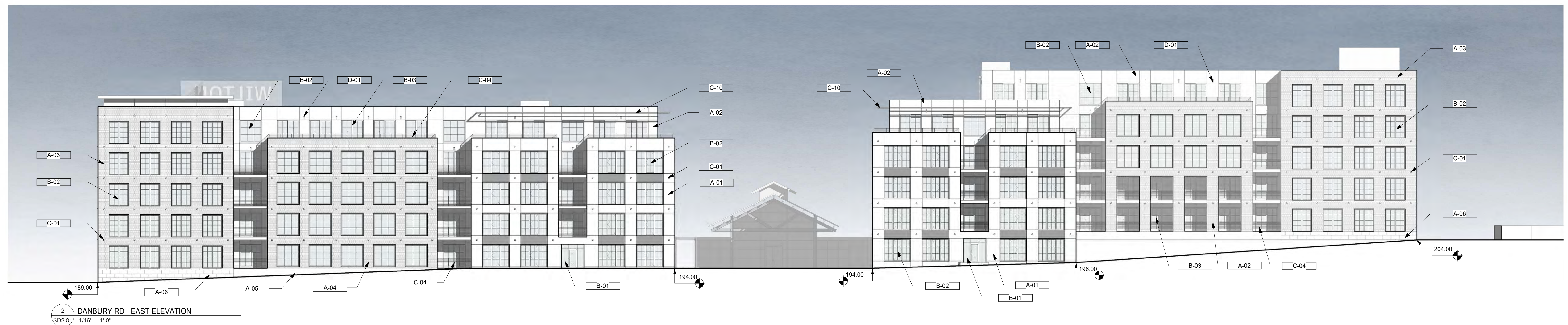
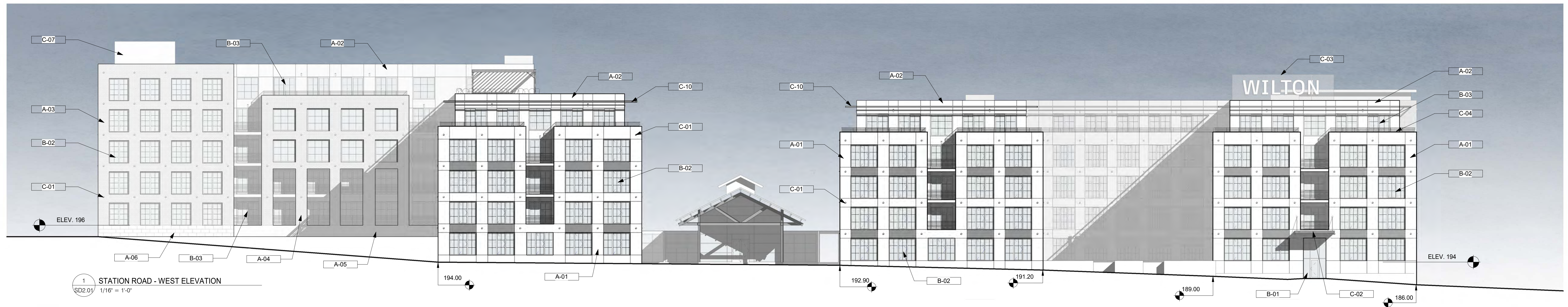






1 Level 6  
SD1.06 1" = 20'-0"



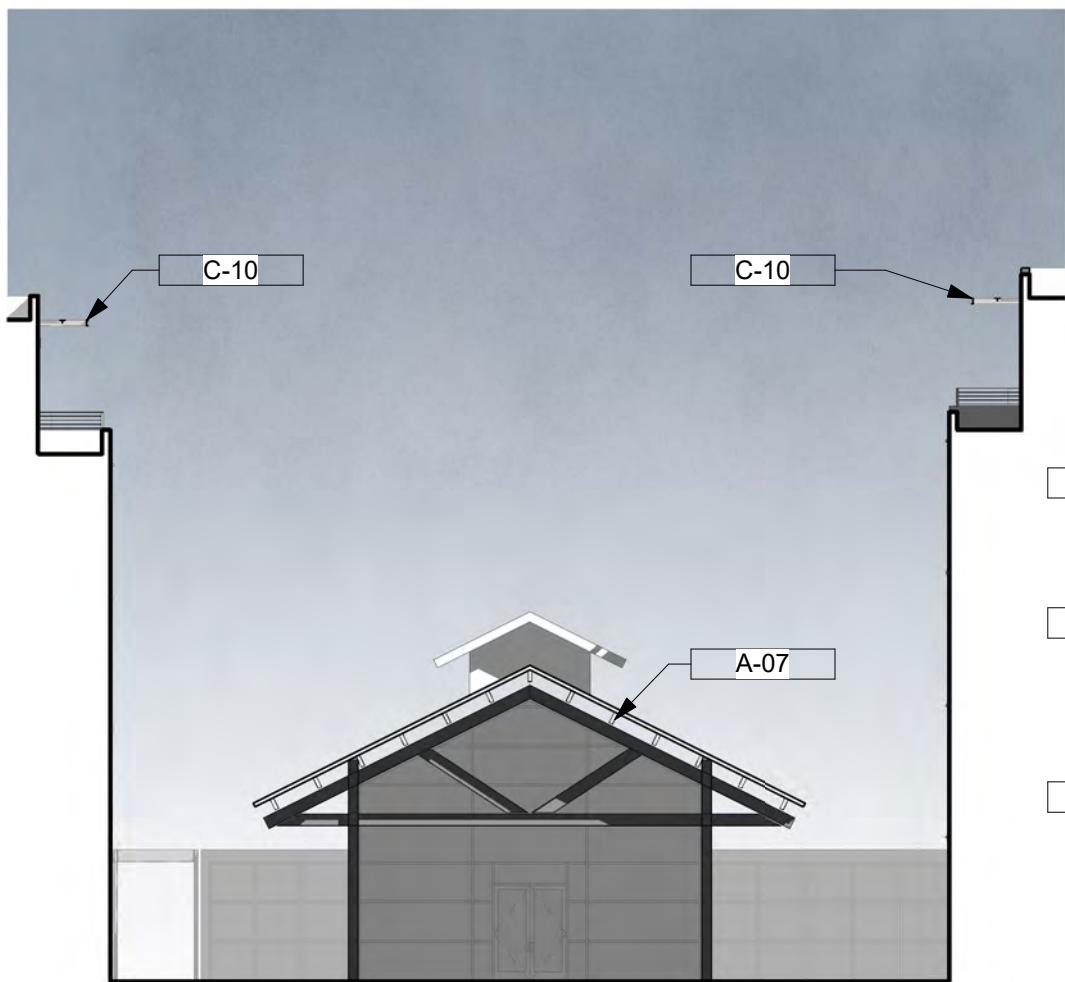


MATERIAL KEYNOTE	
#	KEYNOTE
A-01	FIBER CEMENT PANEL: COLOR A
A-02	FIBER CEMENT PANEL: COLOR B
A-03	FULL DEPTH BRICK: COLOR A
A-04	FULL DEPTH BRICK: COLOR B
A-05	CAST IN PLACE CONCRETE
A-06	CAST STONE VENEER FOUNDATION WALL
A-07	BLACK STEEL FRAMING
B-01	ALUMINUM STOREFRONT
B-02	WINDOW SYSTEM
B-03	ALUMINUM SLIDING DOOR
B-04	OVERHEAD HIGH SPEED GARAGE DOOR
C-01	ARCHITECTURAL VENT COVER
C-02	ARCHITECTURAL CUSTOM METAL CANOPY
C-03	SIGNAGE: BY SIGNAGE VENDOR
C-04	HORIZONTAL CABLE RAILING
C-07	STAIR ACCESS/EGRESS FROM/TO ROOF
C-10	STEEL SUN SCREEN
D-01	ARCHITECTURAL BUILDING LIGHT

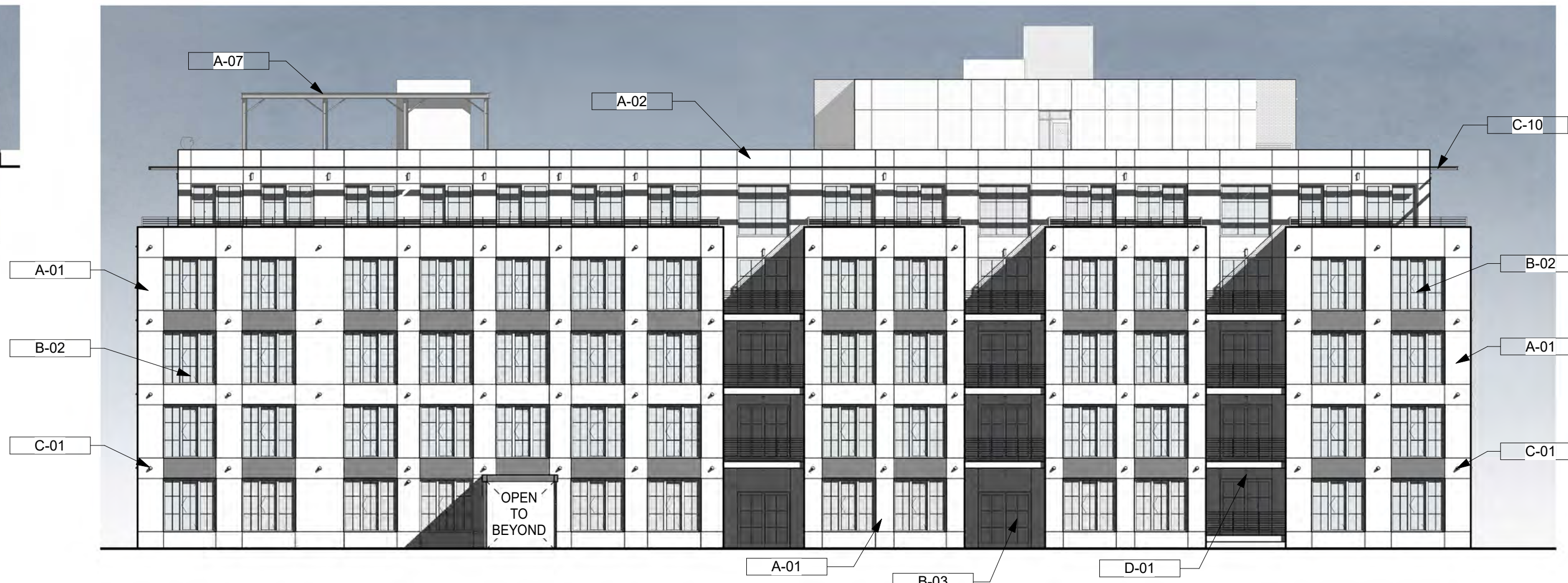




1 MAIN COURTYARD - NORTH ELEVATION  
SD2.02 1/16" = 1'-0"



3 MAIN COURTYARD - EAST ELEVATION  
SD2.02 1/16" = 1'-0"



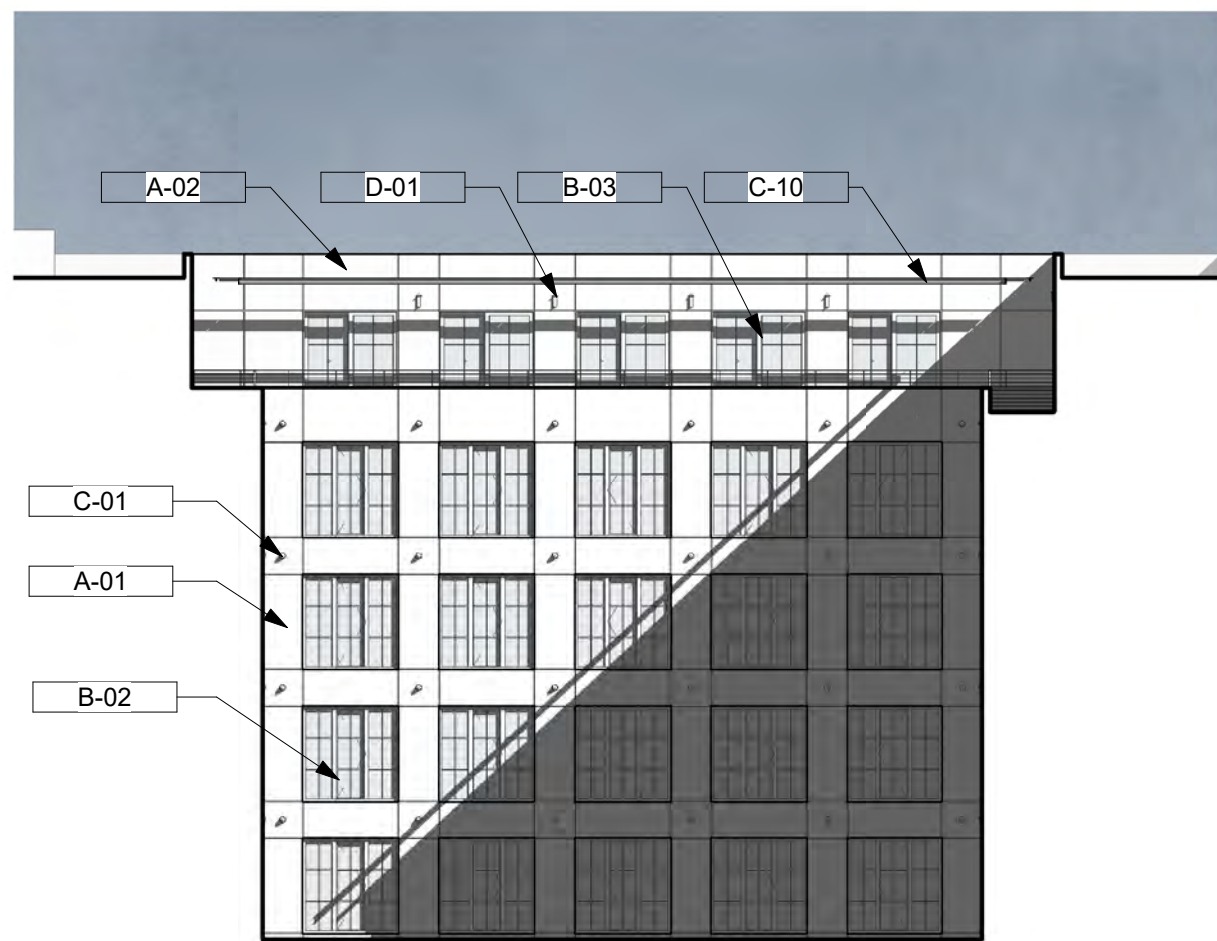
2 MAIN COURTYARD - SOUTH ELEVATION  
SD2.02 1/16" = 1'-0"



4 SECONDARY COURTYARD - NORTH ELEVATION  
SD2.02 1/16" = 1'-0"



5 SECONDARY COURTYARD - SOUTH ELEVATION  
SD2.02 1/16" = 1'-0"



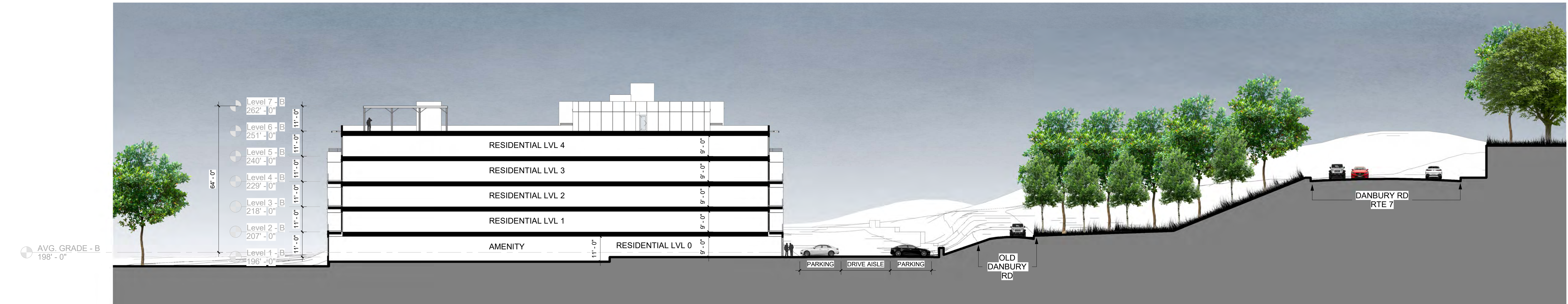
6 SECONDARY COURTYARD - WEST ELEVATION  
SD2.02 1/16" = 1'-0"

MATERIAL KEYNOTE	
#	KEYNOTE
A-01	FIBER CEMENT PANEL: COLOR A
A-02	FIBER CEMENT PANEL: COLOR B
A-03	FULL DEPTH BRICK: COLOR A
A-04	FULL DEPTH BRICK: COLOR B
A-05	CAST IN PLACE CONCRETE
A-06	CAST STONE VENEER FOUNDATION WALL
A-07	BLACK STEEL FRAMING
B-01	ALUMINUM STOREFRONT
B-02	WINDOW SYSTEM
B-03	ALUMINUM SLIDING DOOR
B-04	OVERHEAD HIGH SPEED GARAGE DOOR
C-01	ARCHITECTURAL VENT COVER
C-02	ARCHITECTURAL CUSTOM METAL CANOPY
C-03	SIGNAGE: BY SIGNAGE VENDOR
C-04	HORIZONTAL CABLE RAILING
C-07	STAIR ACCESS/EGRESS FROM/TO ROOF
C-10	STEEL SUN SCREEN
D-01	ARCHITECTURAL BUILDING LIGHT



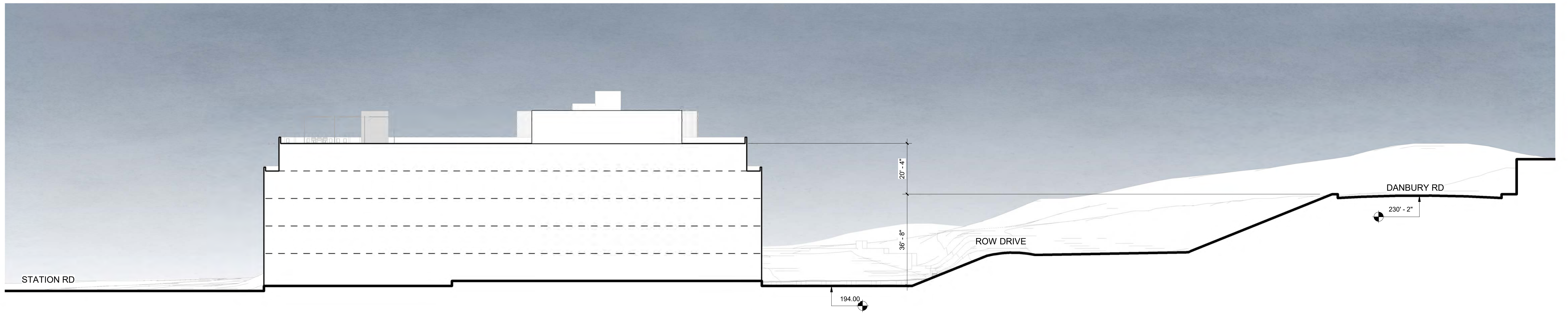


1 BUILDING SECTION N-S  
SD3.01 1" = 20'-0"

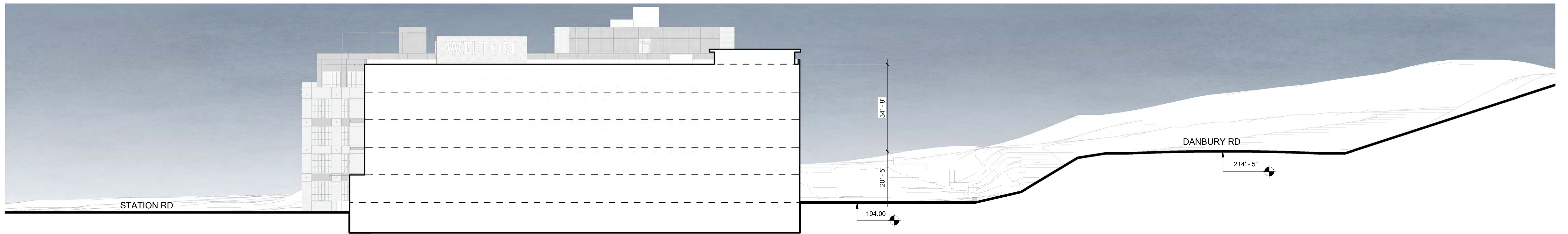


2 BUILDING SECTION E-W  
SD3.01 1" = 20'-0"

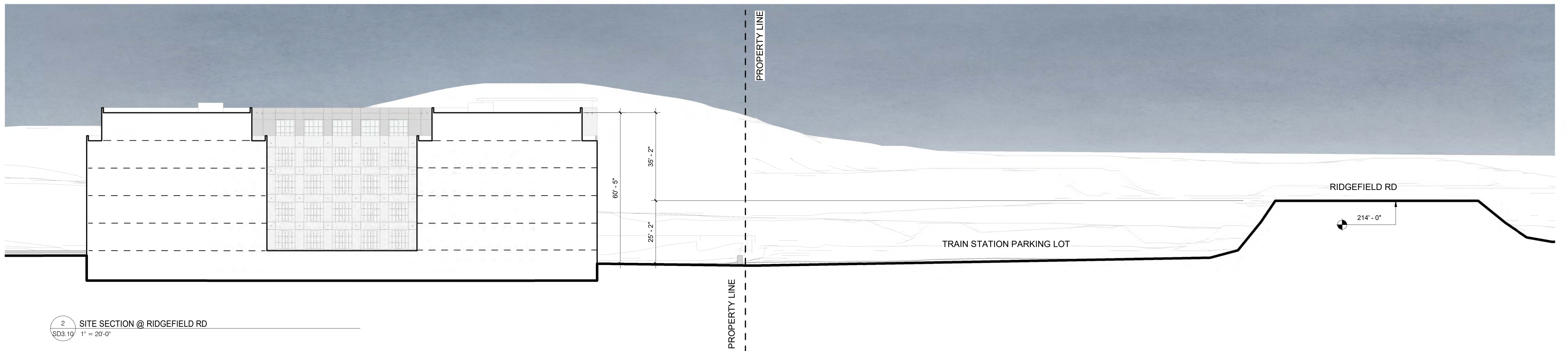




1 SITE SECTION @ HIGH POINT OF DANBURY RD  
SD3.10 1" = 20'-0"



3 SITE SECTION @ LOW POINT OF DANBURY RD  
SD3.10 1" = 20'-0"



2 SITE SECTION @ RIDGEFIELD RD  
SD3.10 1" = 20'-0"